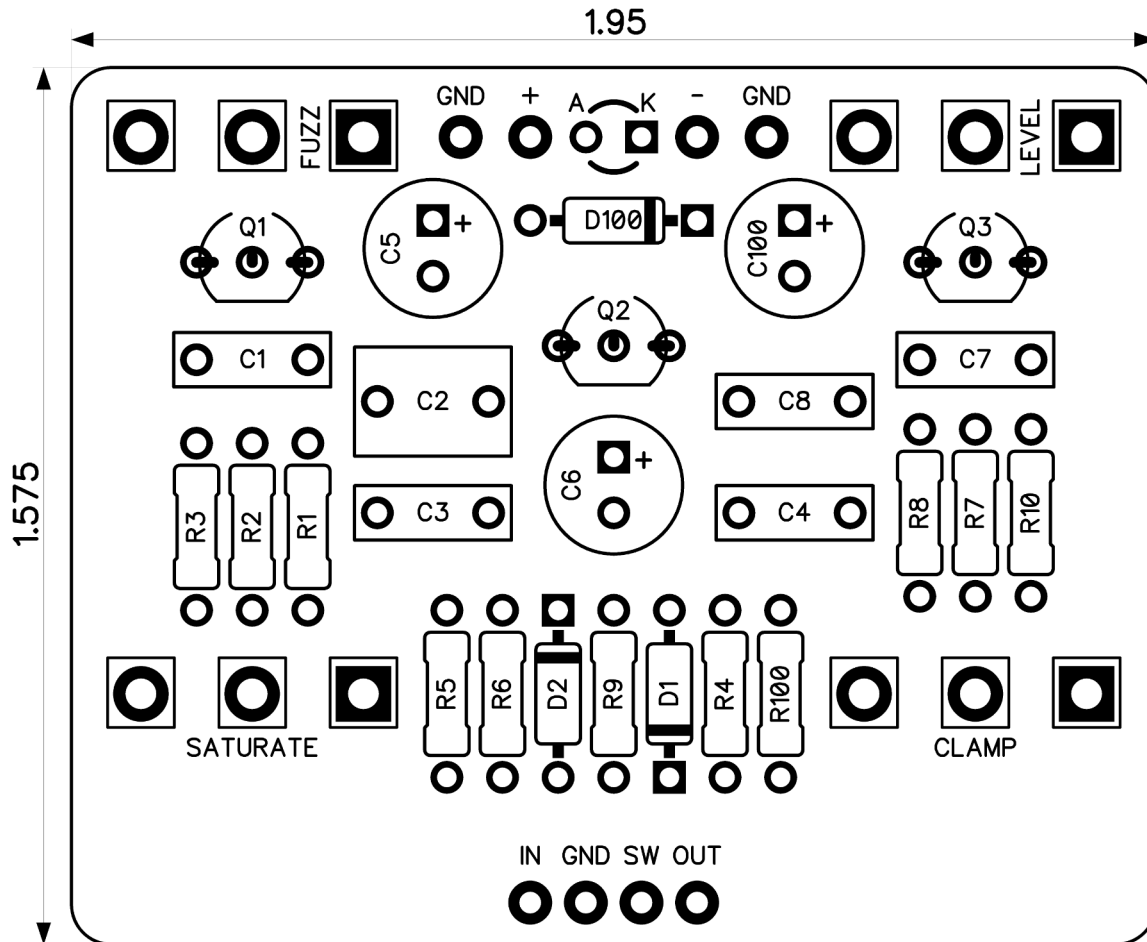




PedalPCB

Mutagen Fuzz

Revised 8/15/23



CONTROLS AND FEATURES

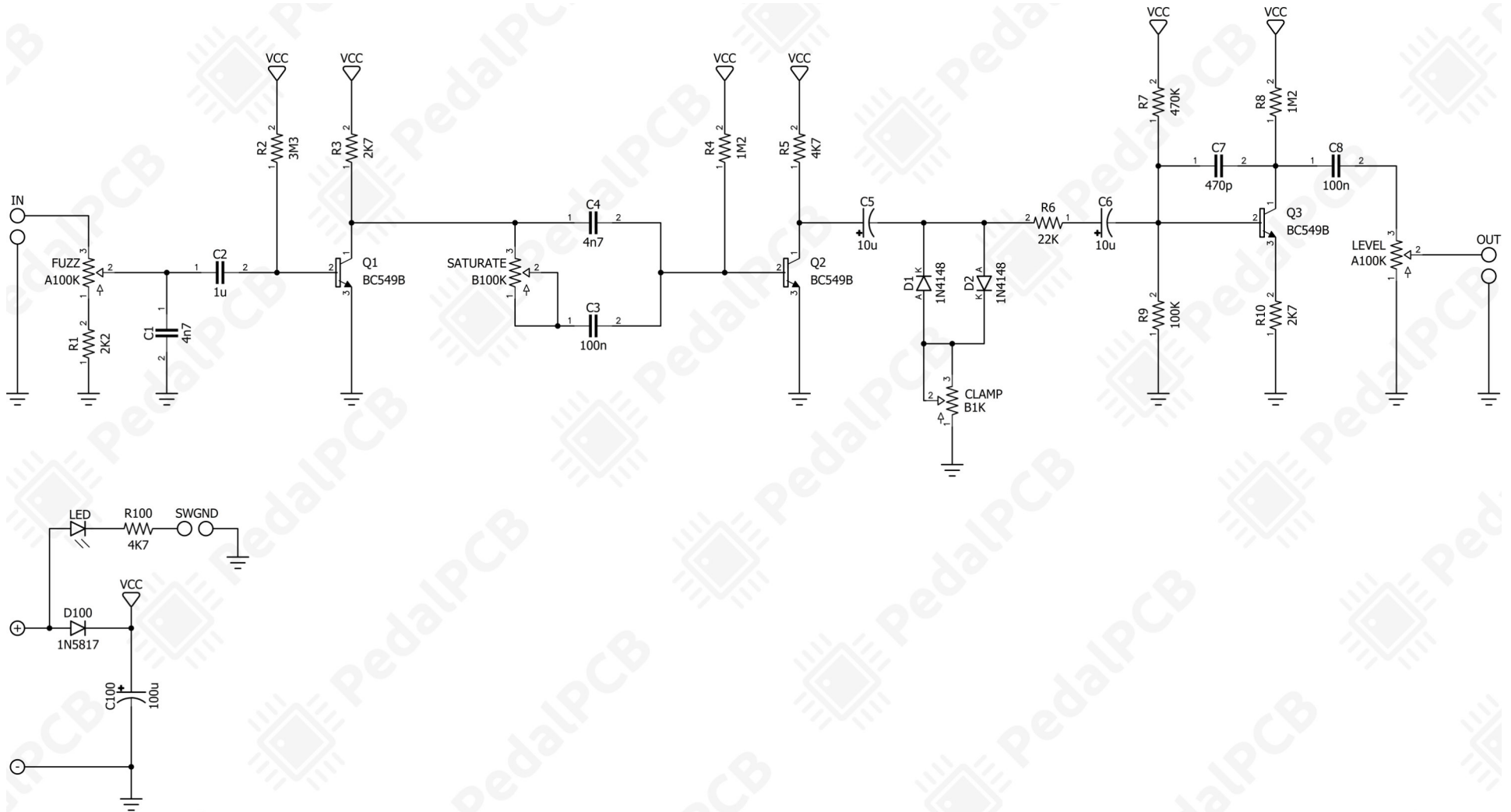
- Level
- Fuzz
- Clamp
- Saturate

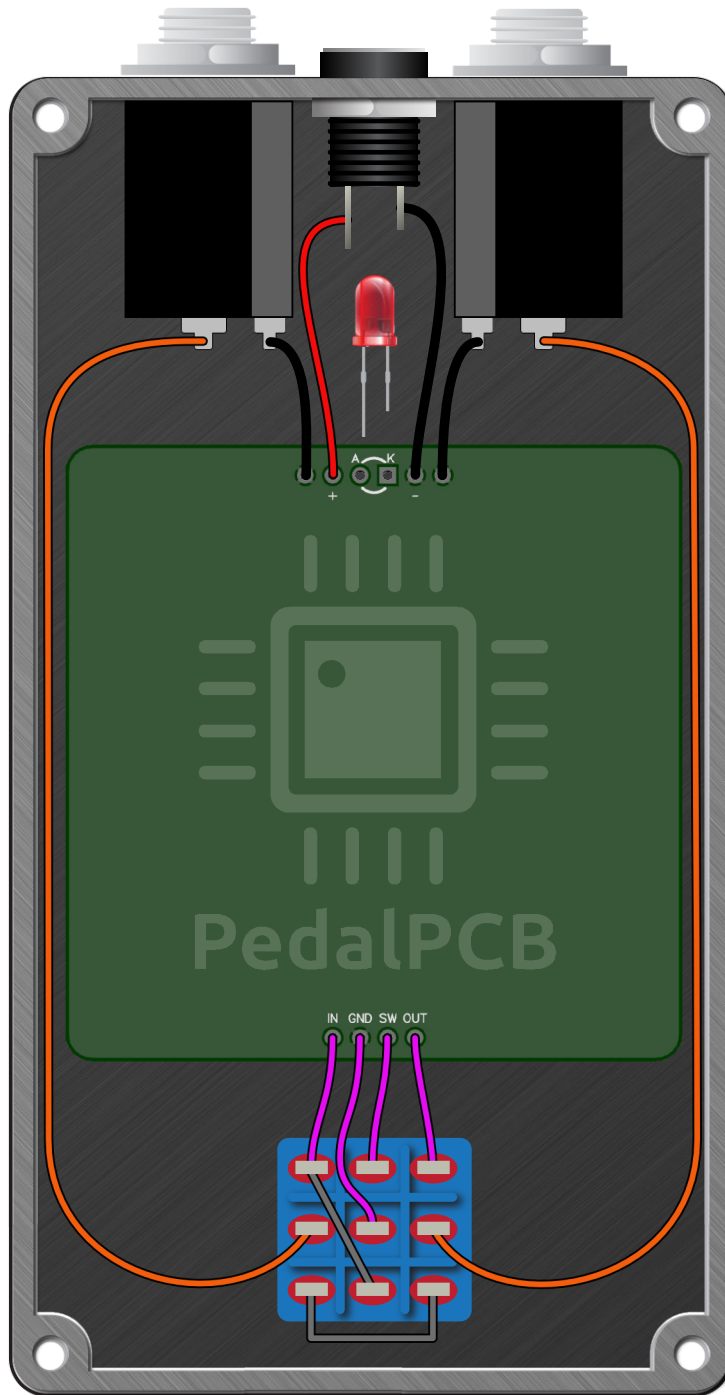
All trademarks and registered trademarks are the property of their respective owners. The company, product, and service names used in this web site are for identification purposes only. Use of these names, logos, and brands does not imply endorsement.

LOCATION	VALUE	TYPE	NOTES
R1	2K2	Resistor, 1/4W	
R2	3M3	Resistor, 1/4W	
R3	2K7	Resistor, 1/4W	
R4	1M2	Resistor, 1/4W	
R5	4K7	Resistor, 1/4W	
R6	22K	Resistor, 1/4W	
R7	470K	Resistor, 1/4W	
R8	1M2	Resistor, 1/4W	
R9	100K	Resistor, 1/4W	
R10	2K7	Resistor, 1/4W	
R100	4K7	Resistor, 1/4W	* LED current limiting resistor
C1	4n7	Film capacitor, 7.2 x 2.5mm	
C2	1u	Film capacitor, 7.2 x 5.0mm	
C3	100n	Film capacitor, 7.2 x 2.5mm	
C4	4n7	Film capacitor, 7.2 x 2.5mm	
C5	10u	Electrolytic capacitor, 5mm	
C6	10u	Electrolytic capacitor, 5mm	
C7	470p	Ceramic capacitor	
C8	100n	Film capacitor, 7.2 x 2.5mm	
C100	100u	Electrolytic capacitor, 5mm	
D1	1N4148	Signal diode, DO-35	
D2	1N4148	Signal diode, DO-35	
D100	1N5817	Schottky diode, DO-41	
Q1	BC549B	BJT transistor, NPN TO-92	
Q2	BC549B	BJT transistor, NPN TO-92	
Q3	BC549B	BJT transistor, NPN TO-92	
LEVEL	A100K	16mm right-angle PCB mount pot	
FUZZ	A100K	16mm right-angle PCB mount pot	
CLAMP	B1K	16mm right-angle PCB mount pot	
SATURATE	B100K	16mm right-angle PCB mount pot	

Mutagen Fuzz

Schematic Diagram





Mutagen Fuzz

Drill Template
125B Enclosure

