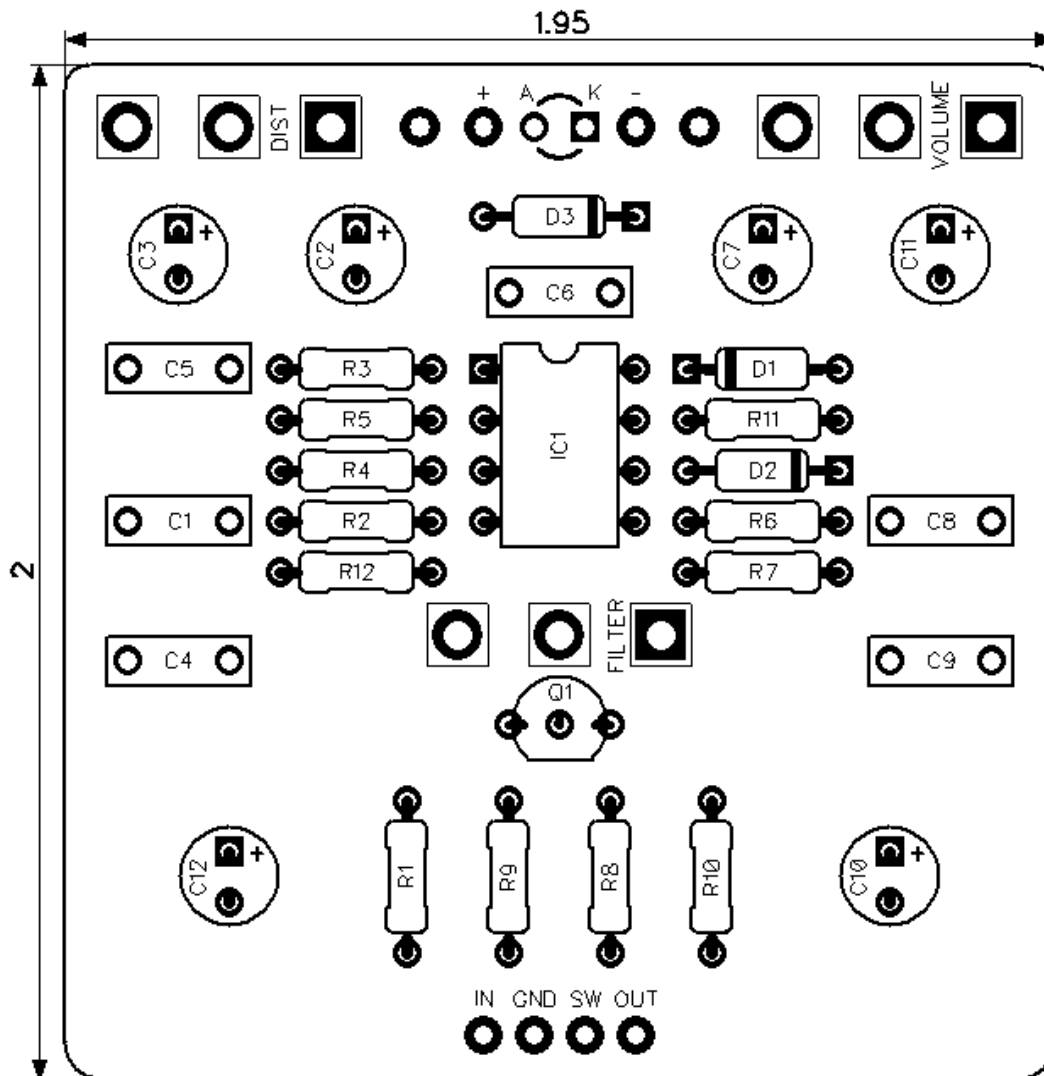




# Muroidea Distortion

Revised 10/21/23

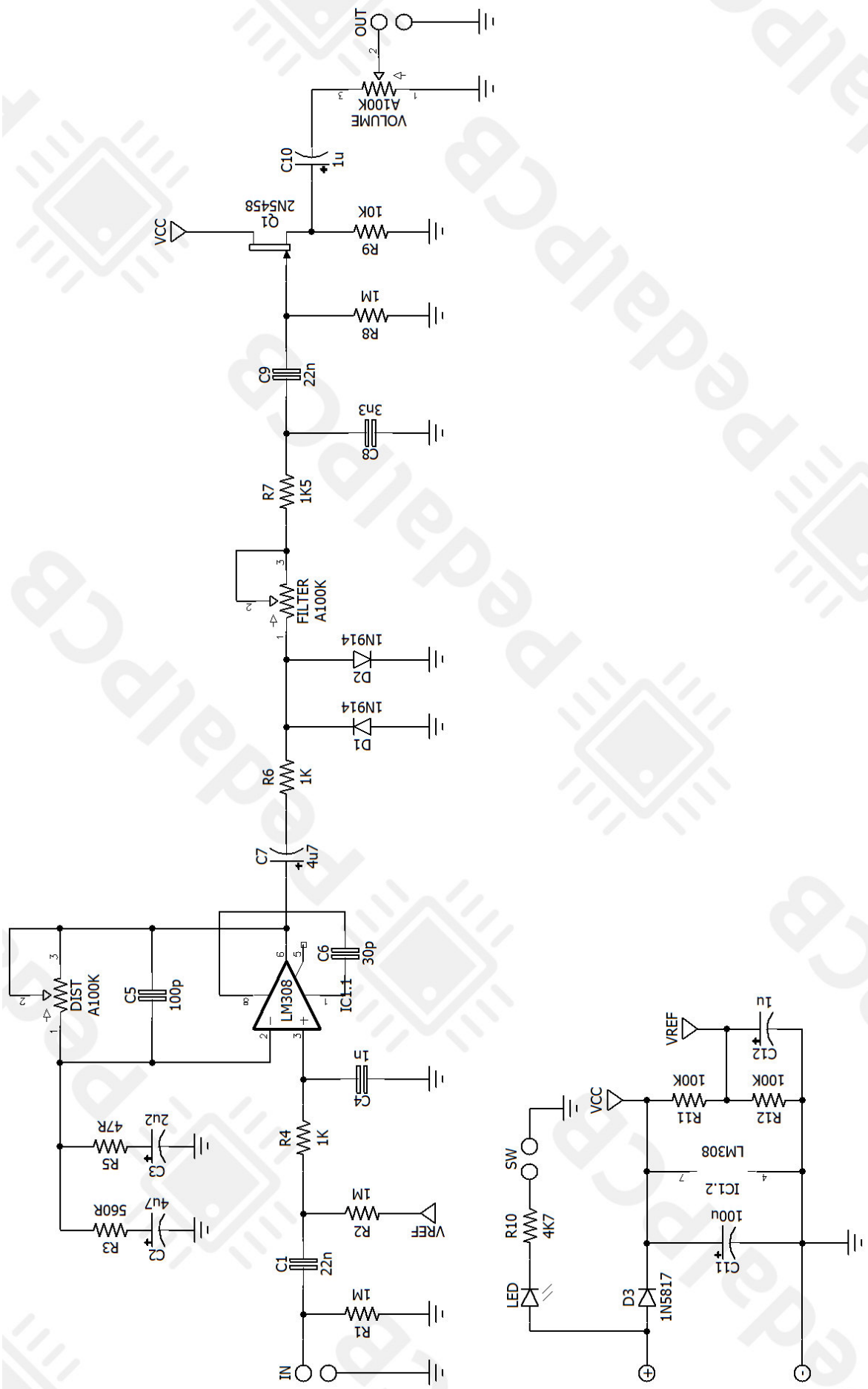


## CONTROLS AND FEATURES

- Volume
- Filter
- Distortion

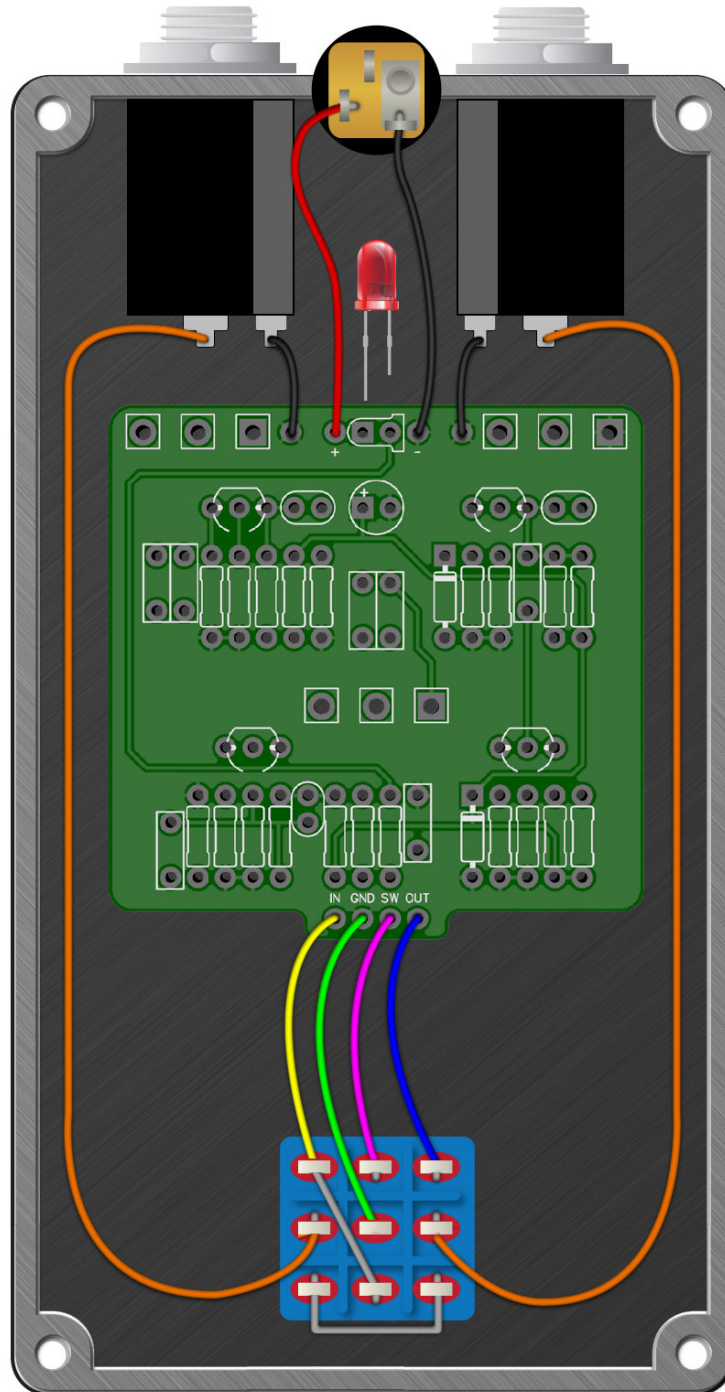
All trademarks and registered trademarks are the property of their respective owners. The company, product, and service names used in this web site are for identification purposes only. Use of these names, logos, and brands does not imply endorsement.

LOCATION	VALUE	TYPE	NOTES
R1	1M	Resistor, 1/4W	
R2	1M	Resistor, 1/4W	
R3	560R	Resistor, 1/4W	
R4	1K	Resistor, 1/4W	
R5	47R	Resistor, 1/4W	
R6	1K	Resistor, 1/4W	
R7	1K5	Resistor, 1/4W	
R8	1M	Resistor, 1/4W	
R9	10K	Resistor, 1/4W	
R10	4K7	Resistor, 1/4W	
R11	100K	Resistor, 1/4W	
R12	100K	Resistor, 1/4W	
C1	22n	Film capacitor, 7.2 x 2.5mm	
C2	4u7	Electrolytic capacitor, 5mm	
C3	2u2	Electrolytic capacitor, 5mm	
C4	1n	Film capacitor, 7.2 x 2.5mm	
C5	100p	Ceramic capacitor	
C6	30p	Ceramic capacitor	
C7	4u7	Electrolytic capacitor, 5mm	
C8	3n3	Film capacitor, 7.2 x 2.5mm	
C9	22n	Film capacitor, 7.2 x 2.5mm	
C10	1u	Electrolytic capacitor, 5mm	
C11	100u	Electrolytic capacitor, 5mm	
C12	1u	Electrolytic capacitor, 5mm	
D1	1N914	Signal diode, DO-35	
D2	1N914	Signal diode, DO-35	
D3	1N5817	Schottky diode, DO-41	
Q1	2N5458	JFET transistor, N-channel	
IC1	LM308	Single op-amp, DIP8	
VOLUME	A100K	16mm right-angle PCB mount pot	100K, Logarithmic Taper (A)
FILTER	A100K	16mm right-angle PCB mount pot	100K, Logarithmic Taper (A)
DIST	A100K	16mm right-angle PCB mount pot	100K, Logarithmic Taper (A)



# Muroidea Distortion

Wiring Diagram



# Muroidea Distortion

Drill Template  
125B Enclosure

