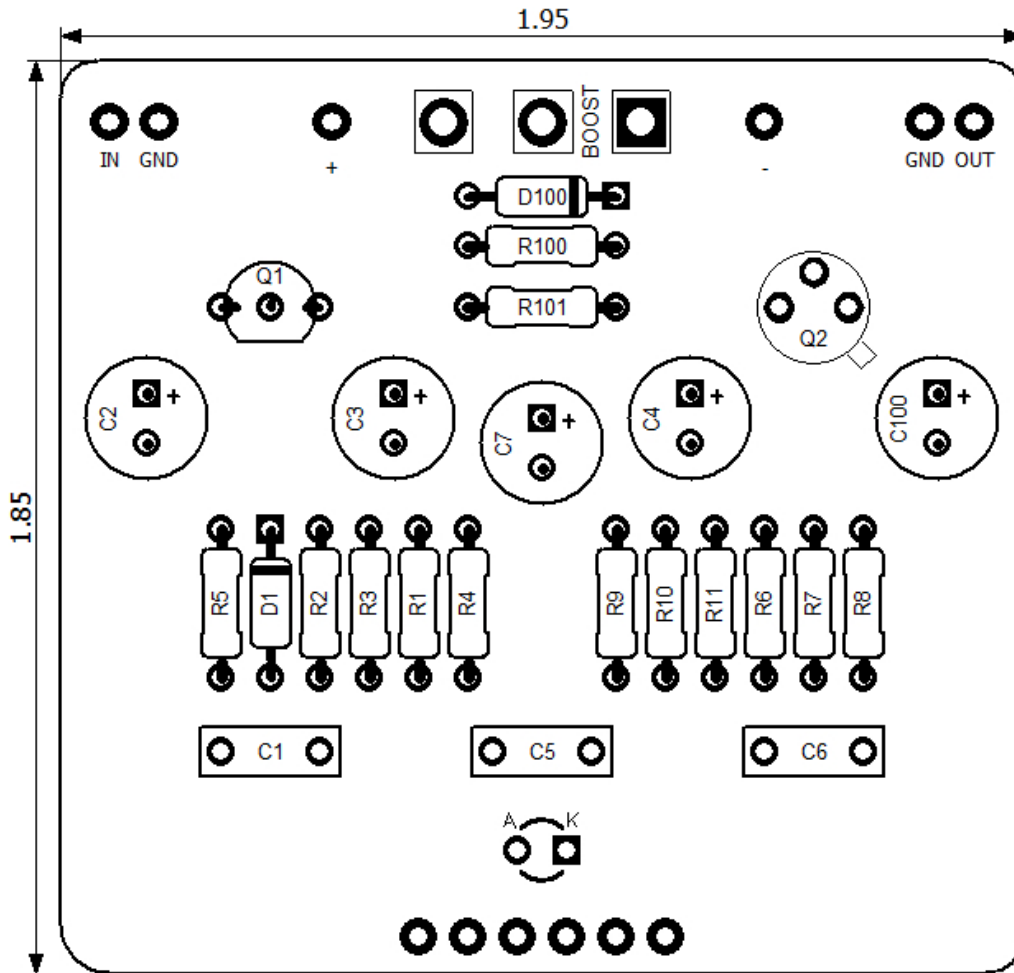




# Modus Operandi Boost

Revised 1/5/22

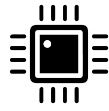


## CONTROLS AND FEATURES

- Boost

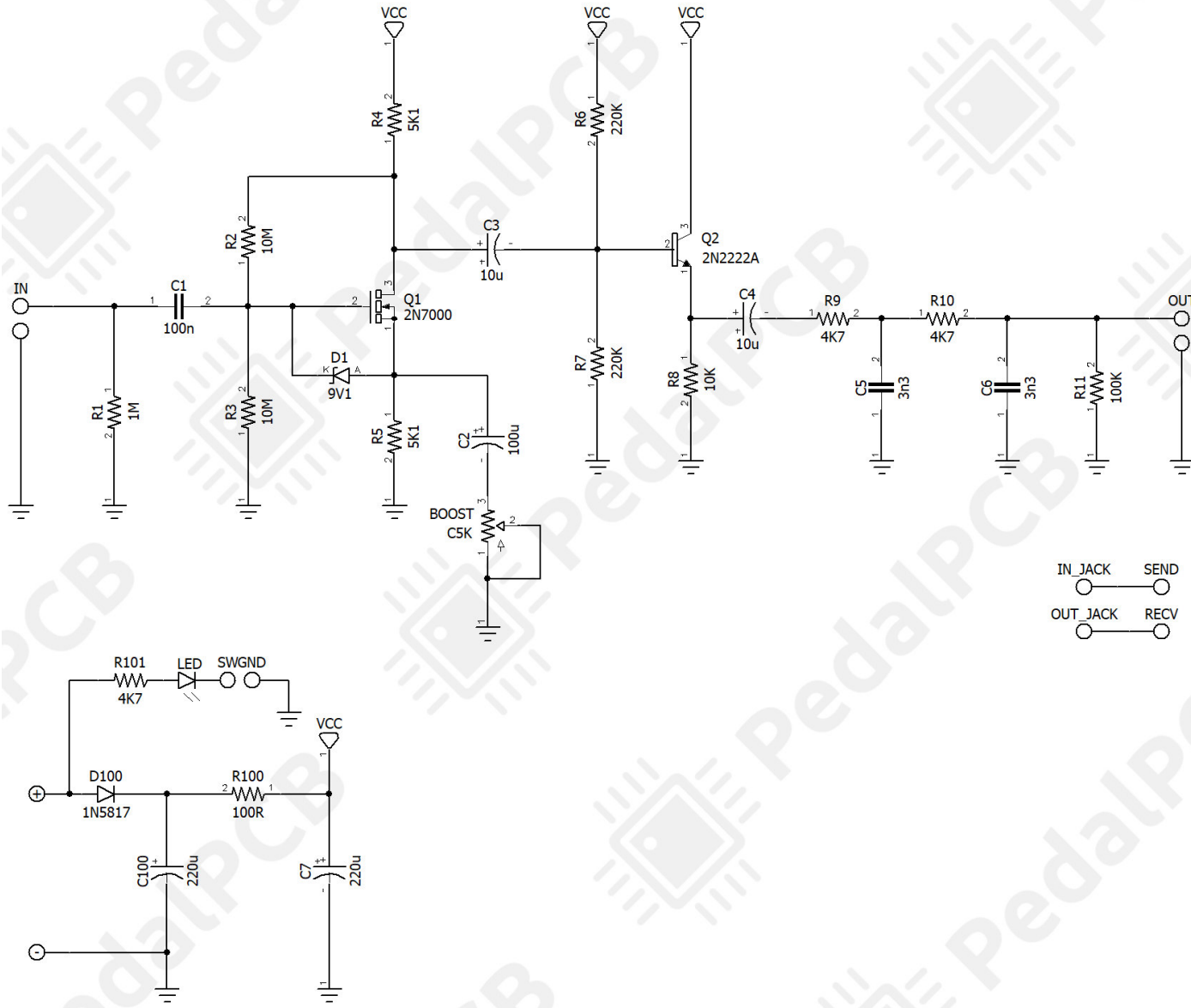
All trademarks and registered trademarks are the property of their respective owners. The company, product, and service names used in this web site are for identification purposes only. Use of these names, logos, and brands does not imply endorsement.

LOCATION	VALUE	TYPE	NOTES
R1	1M	Resistor, 1/4W	
R2	10M	Resistor, 1/4W	
R3	10M	Resistor, 1/4W	
R4	5K1	Resistor, 1/4W	
R5	5K1	Resistor, 1/4W	
R6	220K	Resistor, 1/4W	
R7	220K	Resistor, 1/4W	
R8	10K	Resistor, 1/4W	
R9	4K7	Resistor, 1/4W	
R10	4K7	Resistor, 1/4W	
R11	100K	Resistor, 1/4W	
R100	100R	Resistor, 1/4W	
R101	4K7	Resistor, 1/4W	
C1	100n	Film capacitor, 7.2 x 2.5mm	
C2	100u	Electrolytic capacitor, 5mm	
C3	10u	Electrolytic capacitor, 5mm	
C4	10u	Electrolytic capacitor, 5mm	
C5	3n3	Film capacitor, 7.2 x 2.5mm	
C6	3n3	Film capacitor, 7.2 x 2.5mm	
C7	220u	Electrolytic capacitor, 5mm	
C100	220u	Electrolytic capacitor, 5mm	
D1	1N5239B	Zener diode 1/2W, 9.1V	
D100	1N5817	Schottky diode, DO-41	
Q1	2N7000	N-Channel MOSFET, Enhancement Mode	
Q2	2N2222A	BJT transistor, NPN TO-18	
BOOST	C5K	16mm right-angle PCB mount pot	



# Modus Operandi Boost

Schematic Diagram



# Modus Operandi Boost

Wiring Diagram



# Modus Operandi Boost

Drill Template  
125B Enclosure

