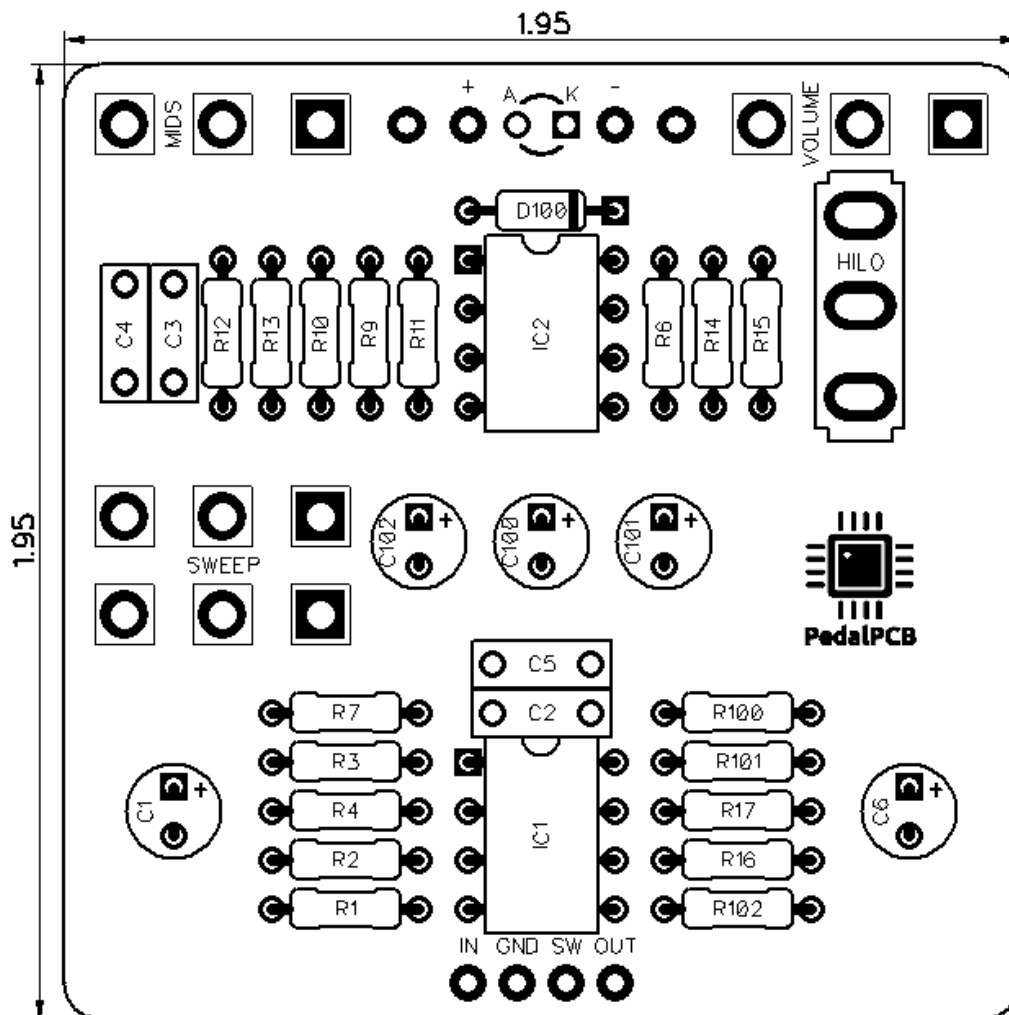


PedalPCB

Maleficent Mids

Revised 2/7/21

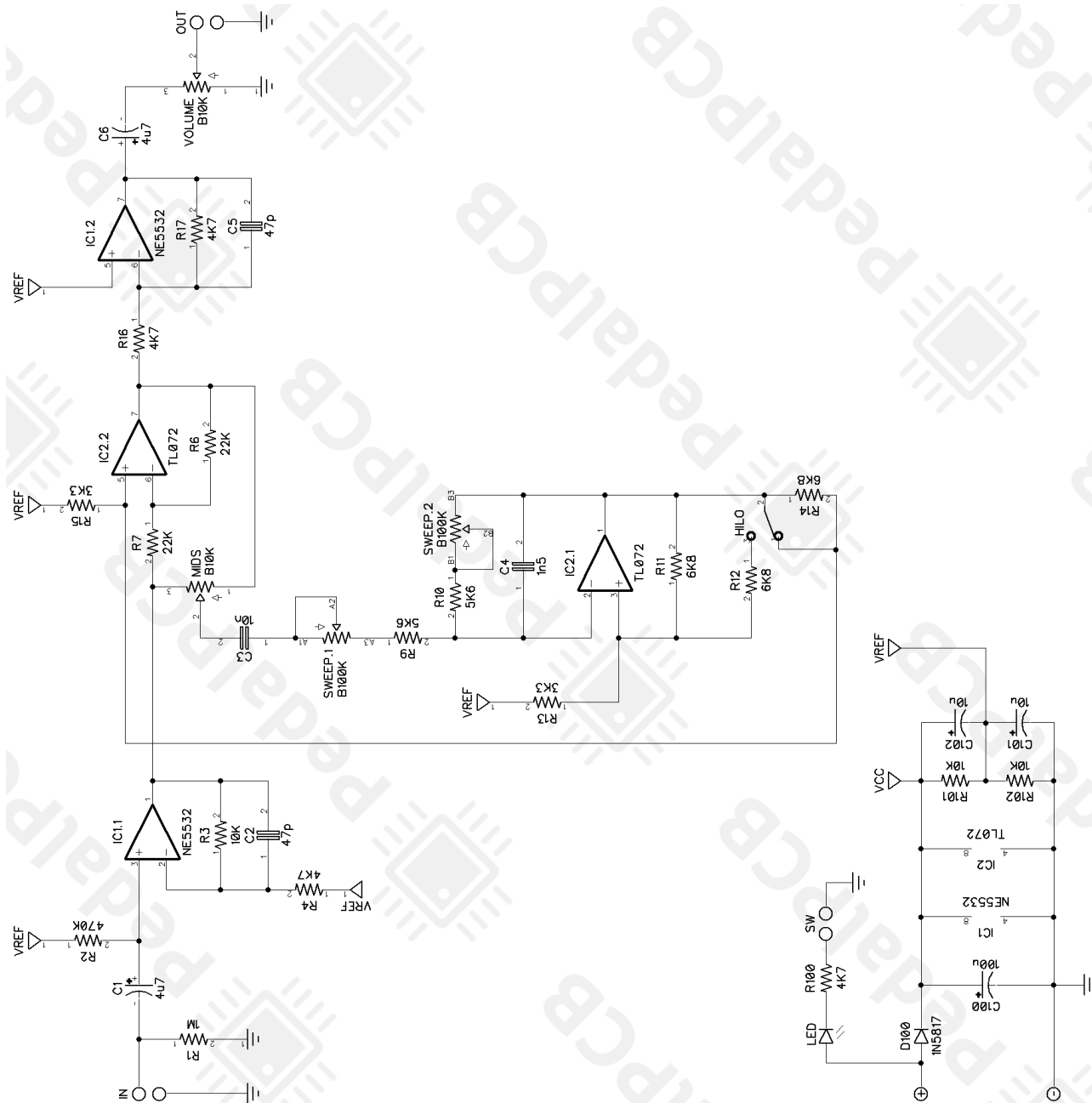


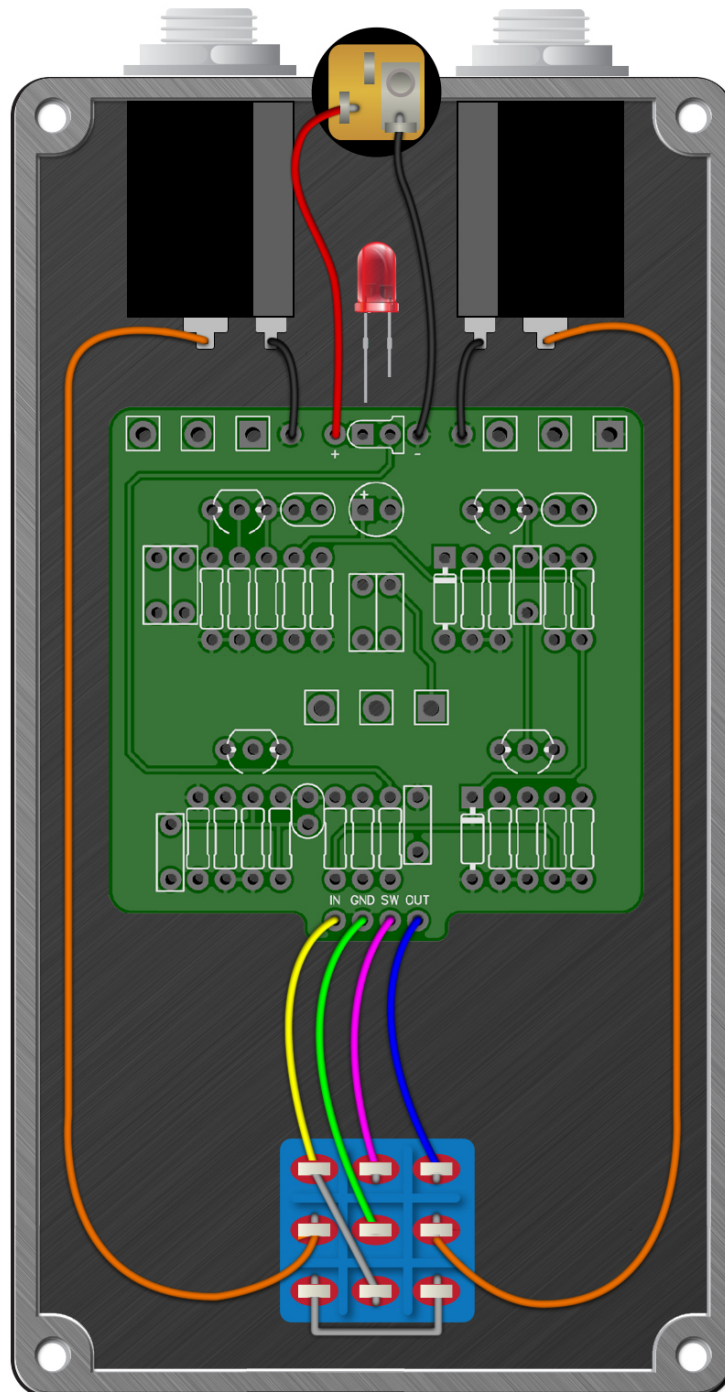
CONTROLS AND FEATURES

- Volume
- Mids
- Sweep
- Hi / Low (Toggle Switch)

All trademarks and registered trademarks are the property of their respective owners. The company, product, and service names used in this web site are for identification purposes only. Use of these names, logos, and brands does not imply endorsement.

LOCATION	VALUE	TYPE	NOTES
R1	1M	Resistor, 1/4W	
R2	470K	Resistor, 1/4W	
R3	10K	Resistor, 1/4W	
R4	4K7	Resistor, 1/4W	
R6	22K	Resistor, 1/4W	
R7	22K	Resistor, 1/4W	
R9	5K6	Resistor, 1/4W	
R10	5K6	Resistor, 1/4W	
R11	6K8	Resistor, 1/4W	
R12	6K8	Resistor, 1/4W	
R13	3K3	Resistor, 1/4W	
R14	6K8	Resistor, 1/4W	
R15	3K3	Resistor, 1/4W	
R16	4K7	Resistor, 1/4W	
R17	4K7	Resistor, 1/4W	
R100	4K7	Resistor, 1/4W	
R101	10K	Resistor, 1/4W	
R102	10K	Resistor, 1/4W	
C1	4u7	Electrolytic capacitor, 5mm	
C2	47p	Ceramic capacitor	
C3	10n	Film capacitor, 7.2 x 2.5mm	
C4	1n5	Film capacitor, 7.2 x 2.5mm	
C5	47p	Ceramic capacitor	
C6	4u7	Electrolytic capacitor, 5mm	
C100	100u	Electrolytic capacitor, 5mm	
C101	10u	Electrolytic capacitor, 5mm	
C102	10u	Electrolytic capacitor, 5mm	
D100	1N5817	Schottky diode, DO-41	
IC1	NE5532	Dual op-amp, DIP8	
IC2	TL072	Dual op-amp, DIP8	
VOLUME	B10K	16mm right-angle PCB mount pot	
MIDS	B10K	16mm right-angle PCB mount pot	
SWEEP	B100K DUAL	16mm right-angle PCB mount pot	Dual-gang B100K
HILO		Toggle switch, 2-position (SPDT)	





Maleficent Mids

Drill Template
125B Enclosure

