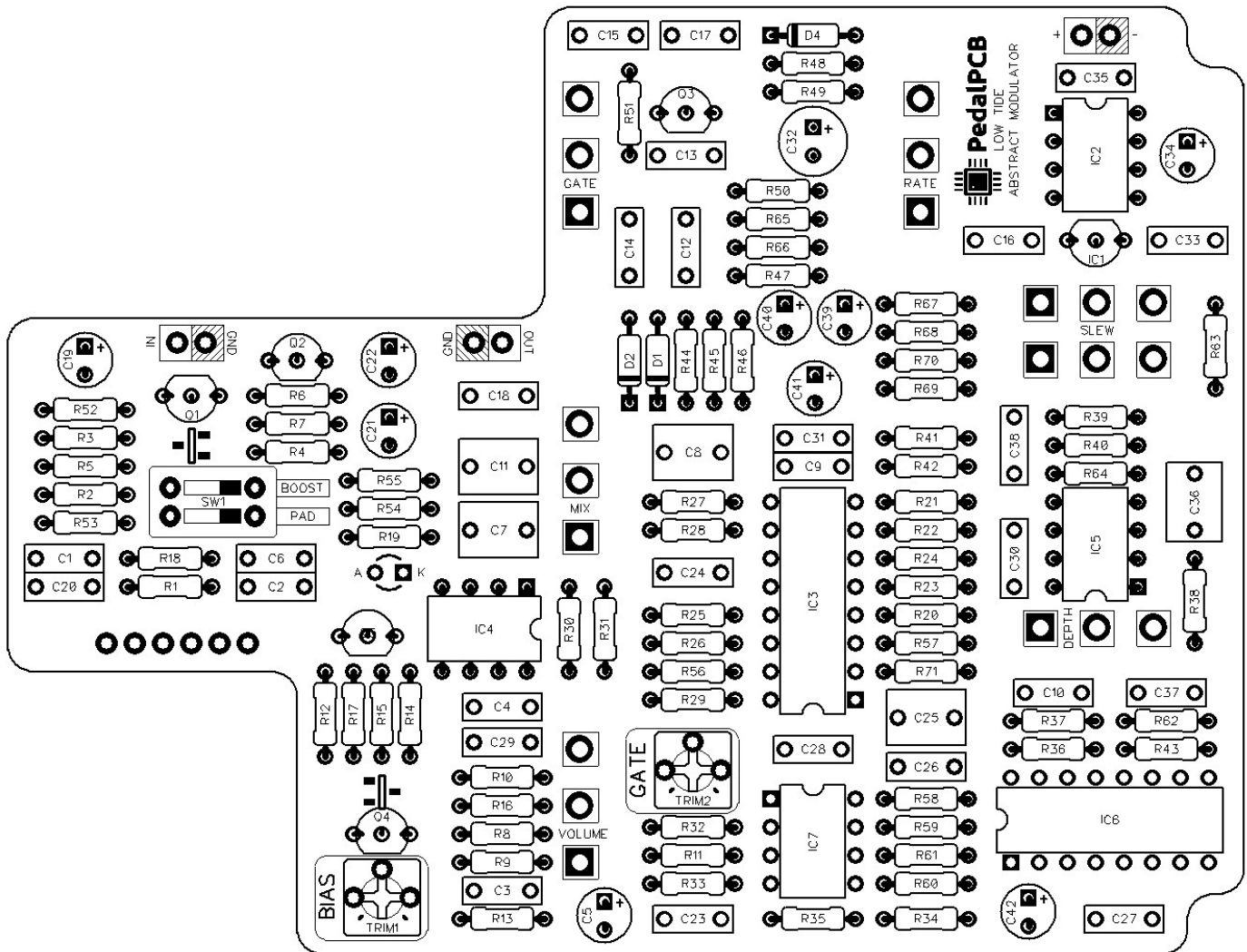


PedalPCB

Low Tide Modulator

Revised 8/19/21



CONTROLS AND FEATURES

- Rate
- Slew
- Depth
- Gate
- Mix
- Level
- BBD Bias (Internal Trim Pot)
- Gate Frequency (Internal Trim Pot)

All trademarks and registered trademarks are the property of their respective owners. The company, product, and service names used in this web site are for identification purposes only. Use of these names, logos, and brands does not imply endorsement.

LOCATION	VALUE	TYPE	NOTES
R1	2M	Resistor, 1/4W	
R2	100K	Resistor, 1/4W	
R3	2K2	Resistor, 1/4W	
R4	10K	Resistor, 1/4W	
R5	2M	Resistor, 1/4W	
R6	3K3	Resistor, 1/4W	
R7	1K8	Resistor, 1/4W	
R8	100K	Resistor, 1/4W	
R9	12K	Resistor, 1/4W	
R10	68K	Resistor, 1/4W	
R11	16K	Resistor, 1/4W	
R12	3K3	Resistor, 1/4W	
R13	1K	Resistor, 1/4W	
R14	1K	Resistor, 1/4W	
R15	16K	Resistor, 1/4W	
R16	100K	Resistor, 1/4W	
R17	2K2	Resistor, 1/4W	
R18	1K	Resistor, 1/4W	
R19	220K	Resistor, 1/4W	
R20	100K	Resistor, 1/4W	
R21	100K	Resistor, 1/4W	
R22	10K	Resistor, 1/4W	
R23	10K	Resistor, 1/4W	
R24	10K	Resistor, 1/4W	
R25	10K	Resistor, 1/4W	
R26	10K	Resistor, 1/4W	
R27	100K	Resistor, 1/4W	
R28	1K	Resistor, 1/4W	
R29	2K2	Resistor, 1/4W	
R30	1M	Resistor, 1/4W	
R31	470K	Resistor, 1/4W	
R32	1K	Resistor, 1/4W	
R33	3K3	Resistor, 1/4W	
R34	330R	Resistor, 1/4W	
R35	4K7	Resistor, 1/4W	
R36	3K3	Resistor, 1/4W	
R37	1K8	Resistor, 1/4W	
R38	10K	Resistor, 1/4W	
R39	470K	Resistor, 1/4W	
R40	220K	Resistor, 1/4W	
R41	9K1	Resistor, 1/4W	
R42	6K8	Resistor, 1/4W	
R43	100K	Resistor, 1/4W	
R44	4K7	Resistor, 1/4W	
R45	100K	Resistor, 1/4W	
R46	4K7	Resistor, 1/4W	
R47	10K	Resistor, 1/4W	
R48	620K	Resistor, 1/4W	

LOCATION	VALUE	TYPE	NOTES
R49	1M	Resistor, 1/4W	
R50	4K7	Resistor, 1/4W	
R51	470K	Resistor, 1/4W	
R52	1K	Resistor, 1/4W	
R53	100K	Resistor, 1/4W	
R54	2K2	Resistor, 1/4W	
R55	4K7	Resistor, 1/4W	
R56	100K	Resistor, 1/4W	
R57	10K	Resistor, 1/4W	
R58	10K	Resistor, 1/4W	
R59	10K	Resistor, 1/4W	
R60	100K	Resistor, 1/4W	
R61	100K	Resistor, 1/4W	
R62	10K	Resistor, 1/4W	
R63	3K3	Resistor, 1/4W	
R64	220K	Resistor, 1/4W	
R65	4K7	Resistor, 1/4W	
R66	10K	Resistor, 1/4W	
R67	2K2	Resistor, 1/4W	
R68	2K2	Resistor, 1/4W	
R69	2K2	Resistor, 1/4W	
R70	2K2	Resistor, 1/4W	
R71	100K	Resistor, 1/4W	
C1	47n	Film capacitor, 7.2 x 2.5mm	
C2	100n	Film capacitor, 7.2 x 2.5mm	
C3	1n	Film capacitor, 7.2 x 2.5mm	
C4	220p	Ceramic capacitor	
C5	22u	Electrolytic capacitor, 5mm	
C6	100n	Film capacitor, 7.2 x 2.5mm	
C7	1u	Film capacitor, 7.2 x 5.0mm	
C8	1u	Film capacitor, 7.2 x 5.0mm	
C9	1n	Film capacitor, 7.2 x 2.5mm	
C10	100n	Film capacitor, 7.2 x 2.5mm	
C11	1u	Film capacitor, 7.2 x 5.0mm	
C12	100n	Film capacitor, 7.2 x 2.5mm	
C13	100p	Ceramic capacitor	
C14	100n	Film capacitor, 7.2 x 2.5mm	
C15	1n	Film capacitor, 7.2 x 2.5mm	
C16	100n	Film capacitor, 7.2 x 2.5mm	
C17	100n	Film capacitor, 7.2 x 2.5mm	
C18	10n	Film capacitor, 7.2 x 2.5mm	
C19	22u	Electrolytic capacitor, 5mm	
C20	680p	Ceramic capacitor	
C21	22u	Electrolytic capacitor, 5mm	
C22	22u	Electrolytic capacitor, 5mm	
C23	1n	Film capacitor, 7.2 x 2.5mm	
C24	4n7	Film capacitor, 7.2 x 2.5mm	

LOCATION	VALUE	TYPE	NOTES
C25	1u	Film capacitor, 7.2 x 5.0mm	
C26	1n	Film capacitor, 7.2 x 2.5mm	
C27	220p	Ceramic capacitor	
C28	100n	Film capacitor, 7.2 x 2.5mm	
C29	100n	Film capacitor, 7.2 x 2.5mm	
C30	100n	Film capacitor, 7.2 x 2.5mm	
C31	100n	Film capacitor, 7.2 x 2.5mm	
C32	220u	Electrolytic capacitor, 5mm	
C33	100n	Film capacitor, 7.2 x 2.5mm	
C34	22u	Electrolytic capacitor, 5mm	
C35	100n	Film capacitor, 7.2 x 2.5mm	
C36	1u	Film capacitor, 7.2 x 5.0mm	
C37	10n	Film capacitor, 7.2 x 2.5mm	
C38	100n	Film capacitor, 7.2 x 2.5mm	
C39	22u	Electrolytic capacitor, 5mm	
C40	22u	Electrolytic capacitor, 5mm	
C41	22u	Electrolytic capacitor, 5mm	
C42	22u	Electrolytic capacitor, 5mm	
D1	BAT48	Schottky diode, DO-35	
D2	BAT48	Schottky diode, DO-35	
D3	BAT48	Schottky diode, DO-35	
Q1	2SK208-Y	JFET transistor, N-channel	
Q2	2N3904	BJT transistor, NPN TO-92	
Q3	2N3904	BJT transistor, NPN TO-92	
Q4	J201	JFET transistor, N-channel	
Q5	2N3904	BJT transistor, NPN TO-92	
IC1	LM78L05	+5V positive voltage regulator	
IC2	RANDOMIZER	Random LFO microcontroller	<i>Included with PCB</i>
IC3	LM13700N	Dual OTA op-amp, DIP16	
IC4	LM258P	Dual op-amp, DIP8	
IC5	MCP602	Dual op-amp, DIP8	
IC6	CD4046BE	Phase Locked Loop IC, DIP16	
IC7	V3207D	BBD delay IC, DIP8	
SW1	DIP-2	DIP switch (2 position), DIP4	
TRIM1	1K	Trim potentiometer, 3362P type	
TRIM2	1K	Trim potentiometer, 3362P type	
RATE	B10K	16mm right-angle PCB mount pot	
SLEW	A1M DUAL	16mm right-angle PCB mount pot	<i>*Dual-gang potentiometer</i>
DEPTH	A100K	16mm right-angle PCB mount pot	
GATE	A100K	16mm right-angle PCB mount pot	
MIX	B100K	16mm right-angle PCB mount pot	
VOLUME	A100K	16mm right-angle PCB mount pot	



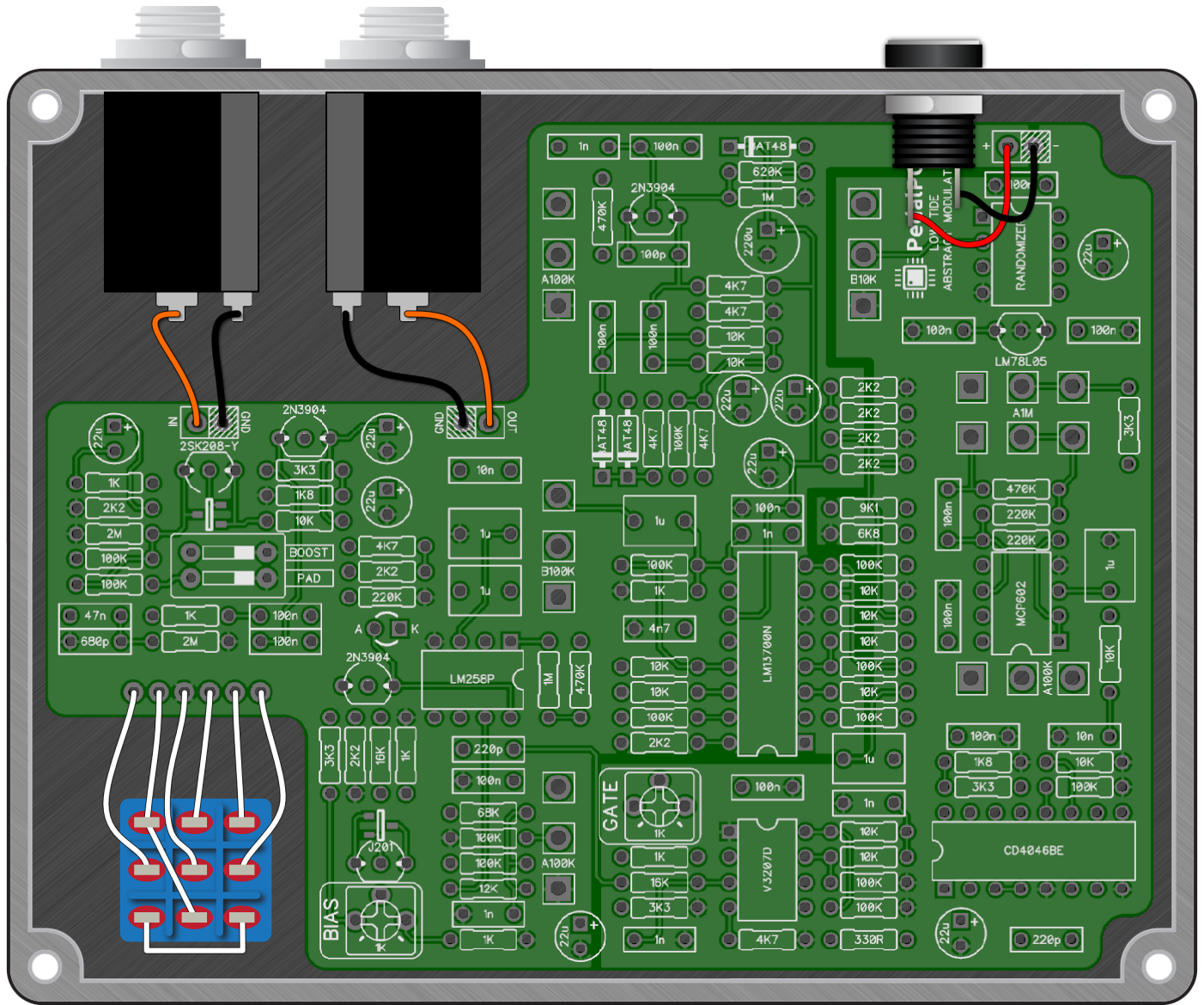
Low Tide Modulator

Schematic Diagram

Schematic Coming Soon

Low Tide Modulator

Wiring Diagram



Low Tide Modulator

Drill Template
1590BB Enclosure

