

Overview

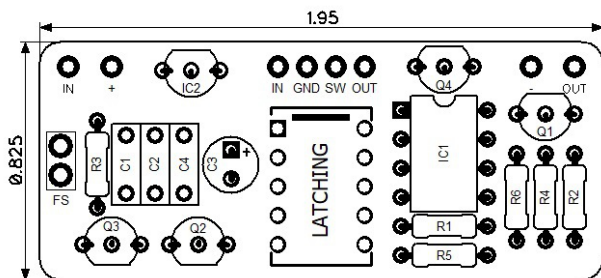
The **PedalPCB Latching Relay Bypass Module** provides a simple and inexpensive solution for relay bypass using commonly available off-the-shelf components. No microcontroller or programming is required.

A 5V Single-Coil Latching Relay is used.

Parts List

LOCATION	VALUE	TYPE	NOTES
R1	10K	Resistor, 1/4W	
R2	10K	Resistor, 1/4W	
R3	100K	Resistor, 1/4W	
R4	10K	Resistor, 1/4W	
R5	10K	Resistor, 1/4W	
R6	10K	Resistor, 1/4W	
C1	1u	Ceramic capacitor, MLCC	
C2	100n	Film capacitor, 7.2 x 2.5mm	
C3	100u	Electrolytic capacitor, 5mm	
C4	100n	Film capacitor, 7.2 x 2.5mm	
IC1	NE555	555 Timer Integrated Circuit	
IC2	78L09	Positive Voltage Regulator, +9V	
Q1	2N3904	BJT transistor, NPN TO-92	
Q2	2N3904	BJT transistor, NPN TO-92	
Q3	2N3906	BJT transistor, PNP TO-92	
Q4	2N3904	BJT transistor, NPN TO-92	
K1	TQ2-L-5V	Single-Coil Latching Relay, 5V	
FS		Momentary SPST Footswitch	

PCB Assembly



Schematic

