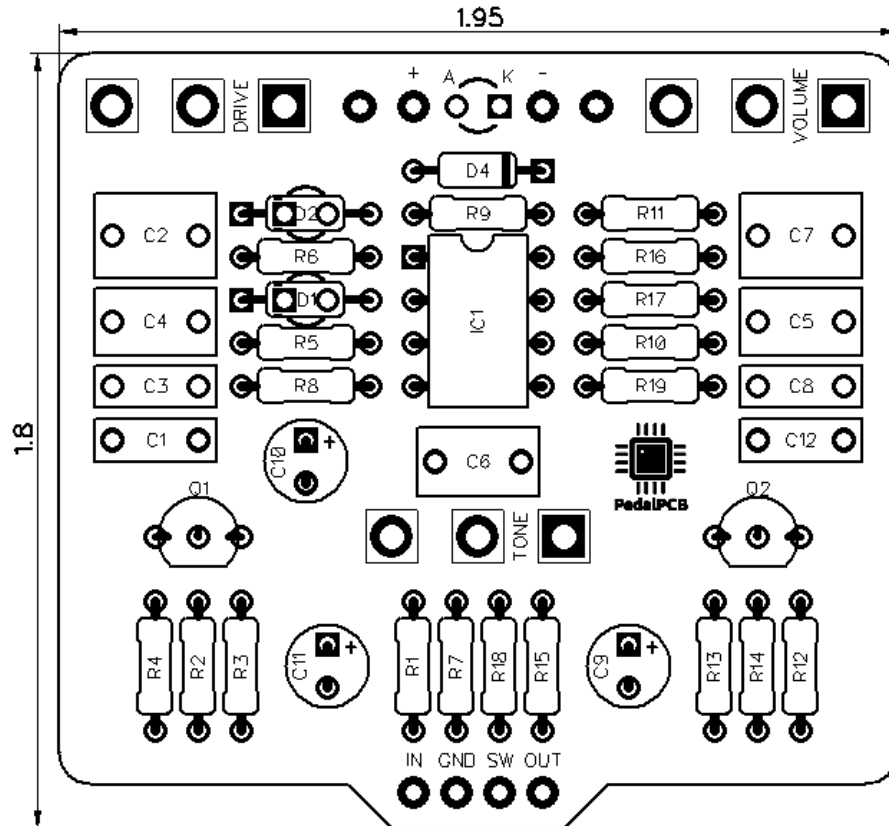


Little Green Scream Machine

Revision 06.07.20



Resistors (1/4W)

R1	2M2
R2	1K
R3	510K
R4	10K
R5	10K
R6	51K
R7	220R
R8	4K7
R9	1K
R10	1K
R11	1K
R12	510K
R13	10K
R14	100R
R15	10K
R16	10K
R17	10K
R18	4K7
R19	10K

Capacitors

C1	22n
C2	1u
C3	51p
C4	47n
C5	220n
C6	220n
C7	1u
C8	100n
C9	10u
C10	47u
C11	47u
C12	100n

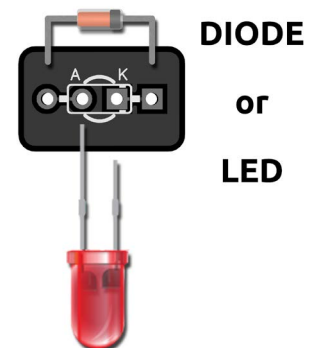
Semiconductors

D1	1N4148*
D2	1N4148*
D4	1N5817
IC1	JRC4558
Q1	2SC1815
Q2	2SC1815

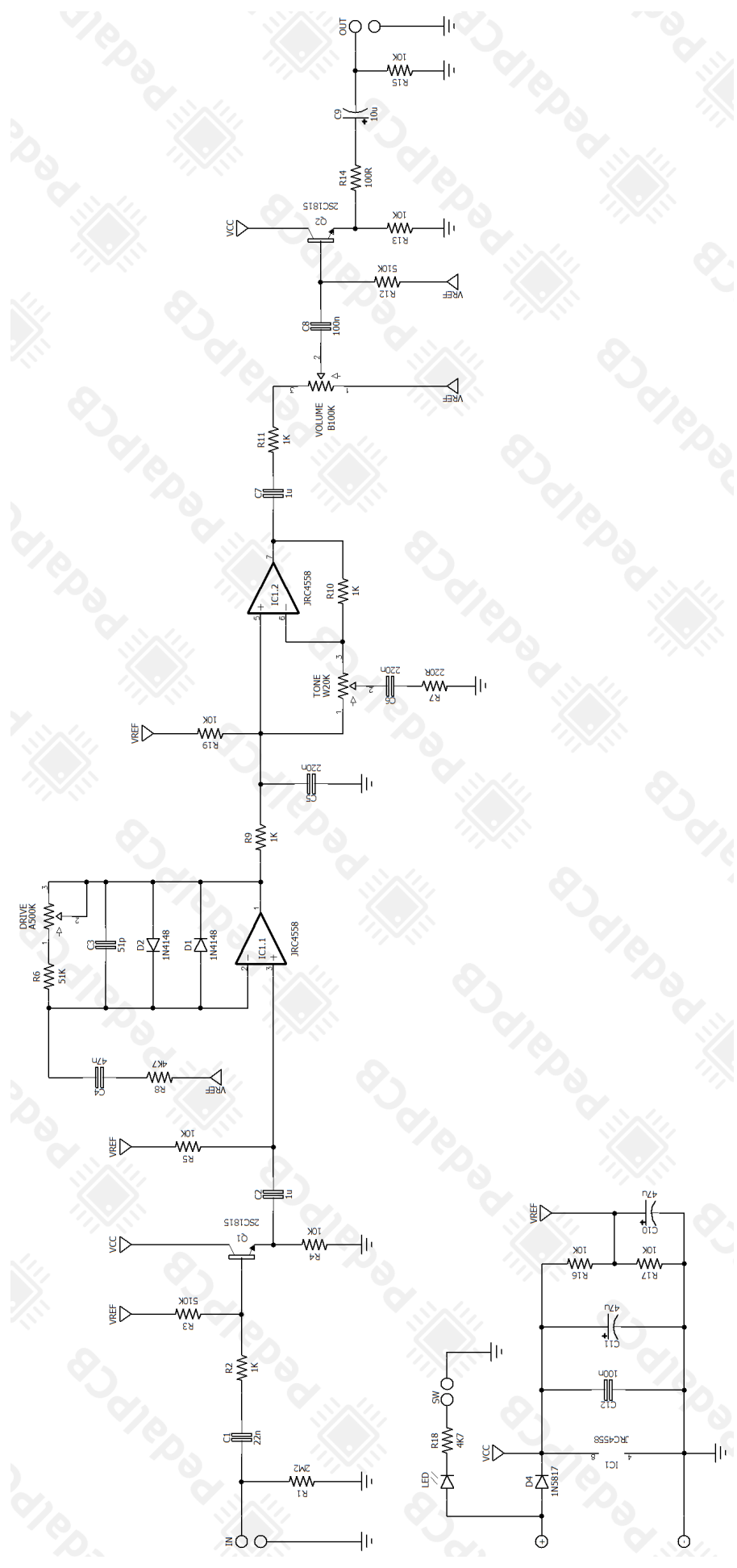
Potentiometers

VOLUME	B100K
TONE	W20K
DRIVE	A500K

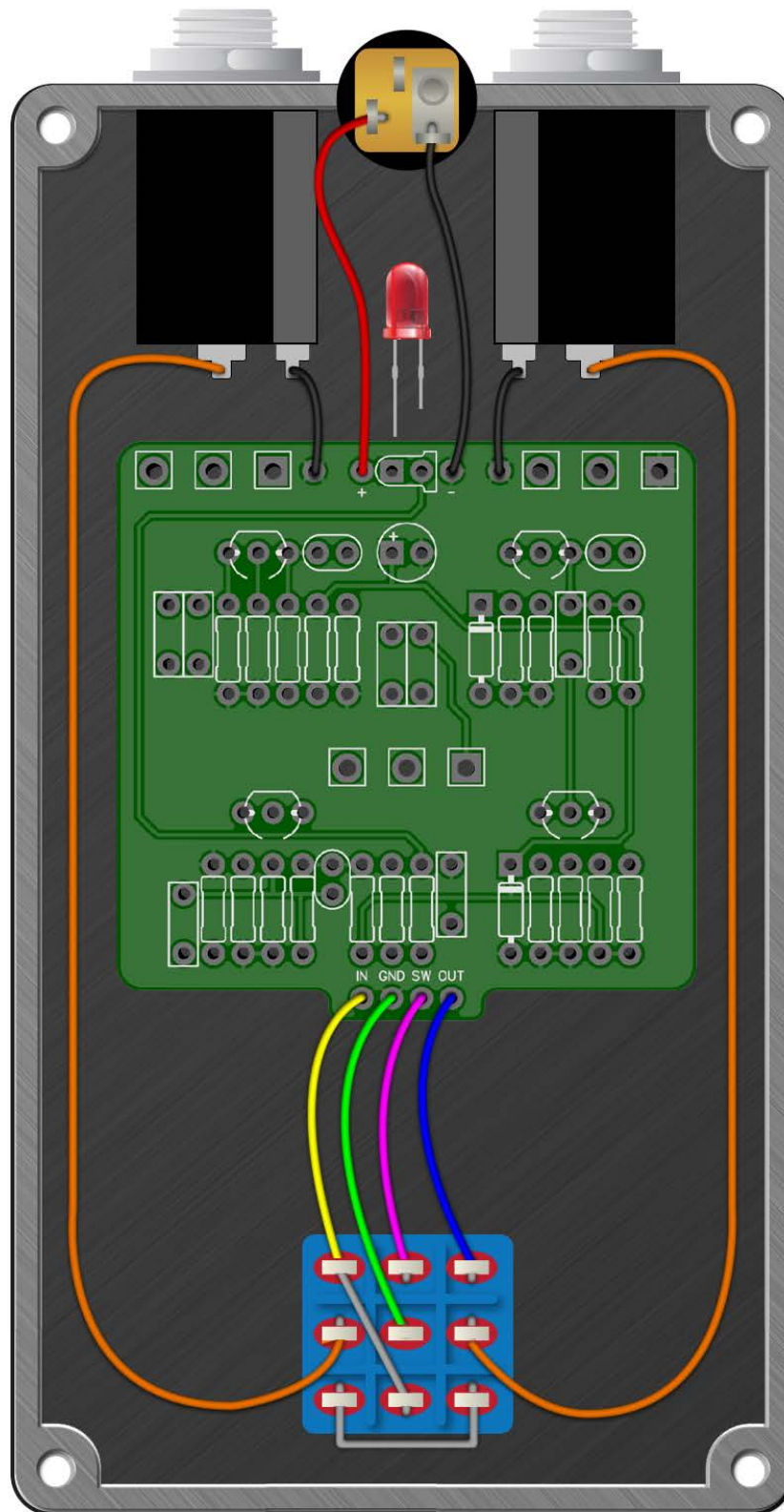
*Silicon diodes or LEDs can be used for D1 / D2



Little Green Scream Machine



Wiring Diagram



Drill Template

4S125B enclosure with top mounted jacks

