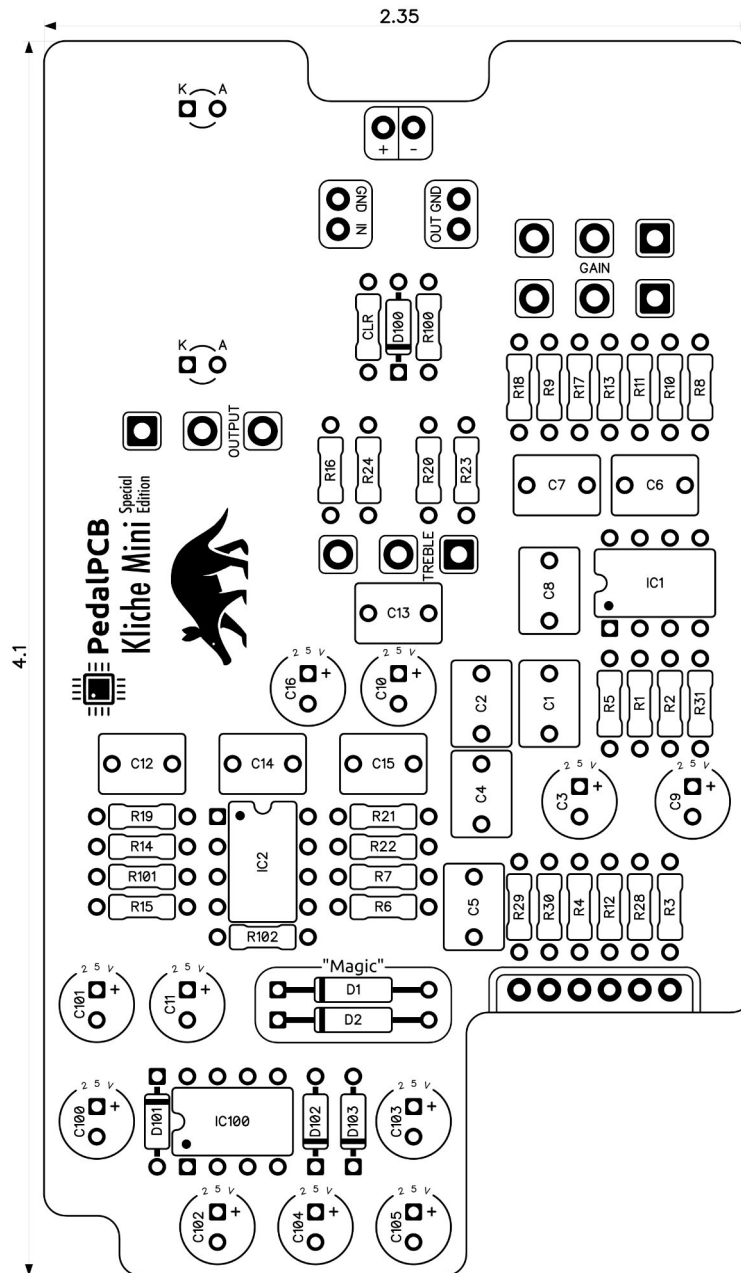


# PedalPCB

## Kliche Mini SE

Revised 8/15/23

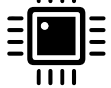


## CONTROLS AND FEATURES

- Gain
- Treble
- Output

*All trademarks and registered trademarks are the property of their respective owners. The company, product, and service names used in this web site are for identification purposes only. Use of these names, logos, and brands does not imply endorsement.*

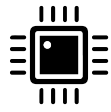
LOCATION	VALUE	TYPE	NOTES
R1	10K	Resistor, 1/4W	
R2	1M	Resistor, 1/4W	
R3	100K	Resistor, 1/4W	
R4	560R	Resistor, 1/4W	
R5	5K1	Resistor, 1/4W	
R6	1K5	Resistor, 1/4W	
R7	1K	Resistor, 1/4W	
R8	10K	Resistor, 1/4W	
R9	2K	Resistor, 1/4W	
R10	15K	Resistor, 1/4W	
R11	422K	Resistor, 1/4W	
R12	1K	Resistor, 1/4W	
R13	1K5	Resistor, 1/4W	
R14	15K	Resistor, 1/4W	
R15	47K	Resistor, 1/4W	
R16	22K	Resistor, 1/4W	
R17	27K	Resistor, 1/4W	
R18	12K	Resistor, 1/4W	
R19	392K	Resistor, 1/4W	
R20	1K8	Resistor, 1/4W	
R21	100K	Resistor, 1/4W	
R22	100K	Resistor, 1/4W	
R23	4K7	Resistor, 1/4W	
R24	560R	Resistor, 1/4W	
R28	68K	Resistor, 1/4W	
R29	68K	Resistor, 1/4W	
R30	100K	Resistor, 1/4W	
R31	1M	Resistor, 1/4W	
R100	100R	Resistor, 1/4W	
R101	27K	Resistor, 1/4W	
R102	27K	Resistor, 1/4W	
CLR	3K9	Resistor, 1/4W	* LED current limiting resistor
C1	100n	Film capacitor, 7.2 x 2.5mm	
C2	100n	Film capacitor, 7.2 x 2.5mm	
C3	4u7	Electrolytic capacitor, 5.0mm	25V minimum voltage
C4	68n	Film capacitor, 7.2 x 2.5mm	
C5	390n	Film capacitor, 7.2 x 5.0mm	
C6	68n	Film capacitor, 7.2 x 2.5mm	
C7	82n	Film capacitor, 7.2 x 2.5mm	
C8	390p	Ceramic capacitor	
C9	1u	Electrolytic capacitor, 5.0mm	
C10	1u	Electrolytic capacitor, 5.0mm	
C11	1u	Electrolytic capacitor, 5.0mm	
C12	2n2	Film capacitor, 7.2 x 2.5mm	
C13	27n	Film capacitor, 7.2 x 2.5mm	
C14	820p	Ceramic capacitor	
		Continued on next page...	



## Kliche Mini SE

## Parts List (Page 2 of 2)

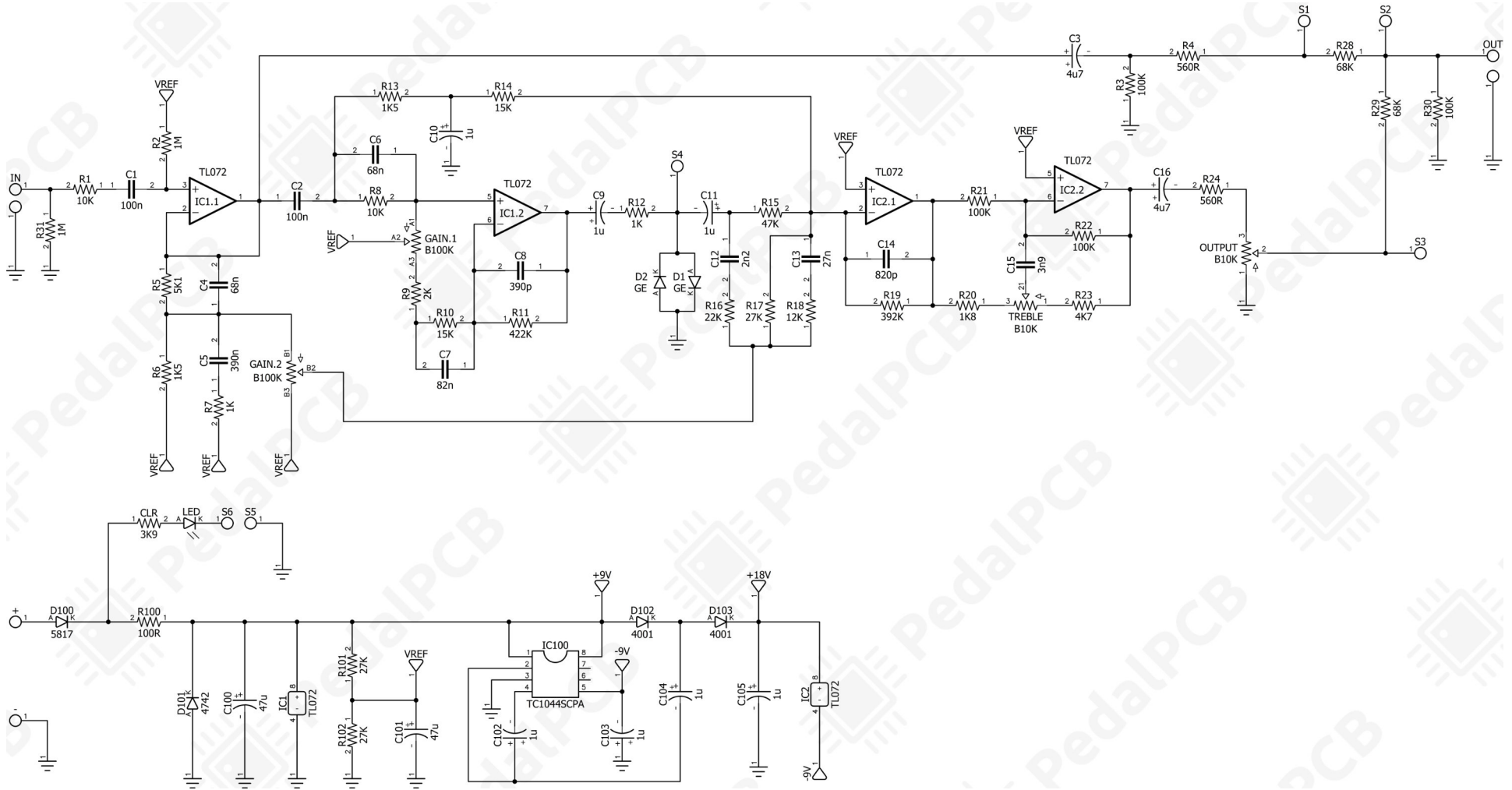
[illegible]

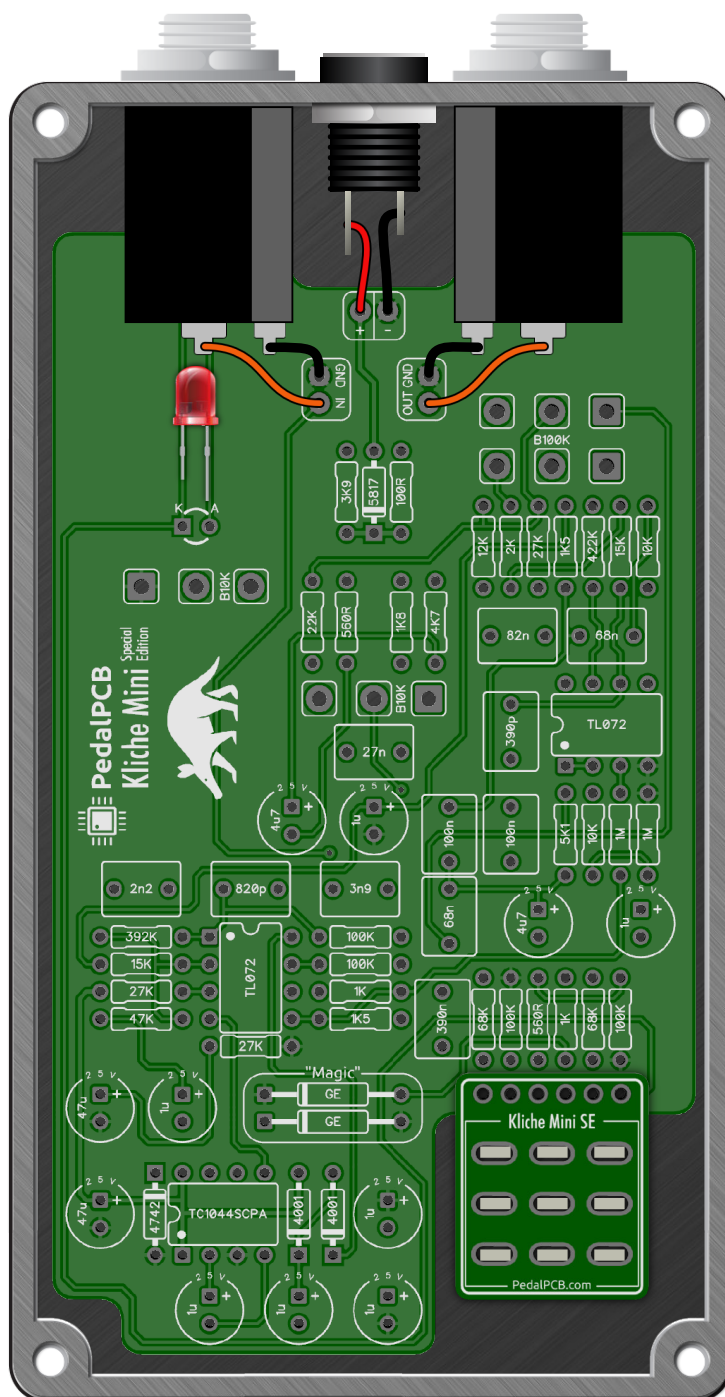


PedalPCB

# Kliche Mini SE

Schematic Diagram





# Kliche Mini SE

Drill Template  
125B Enclosure

