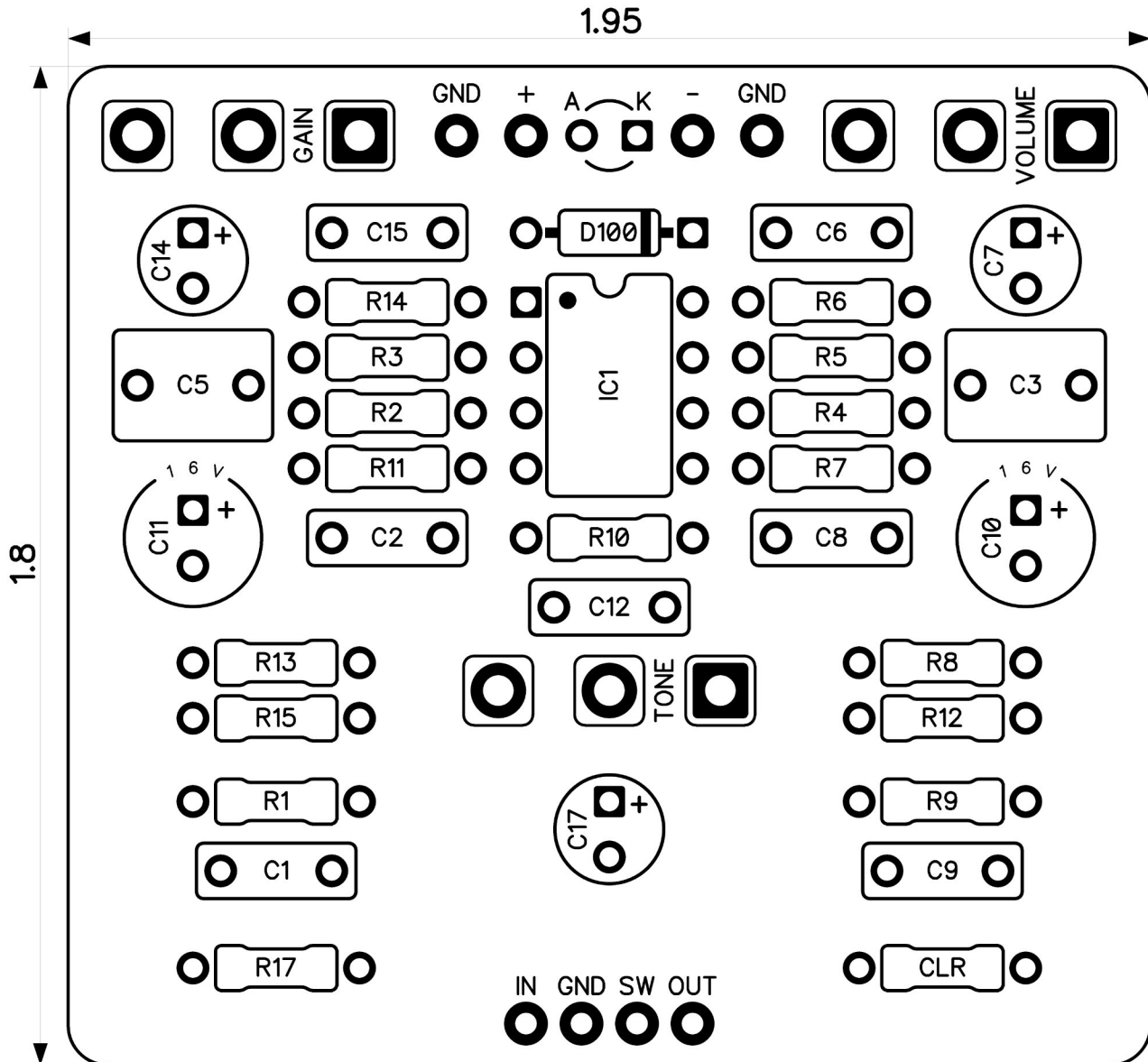


PedalPCB

Ionosphere Fuzz

Revised 3/16/24



CONTROLS AND FEATURES

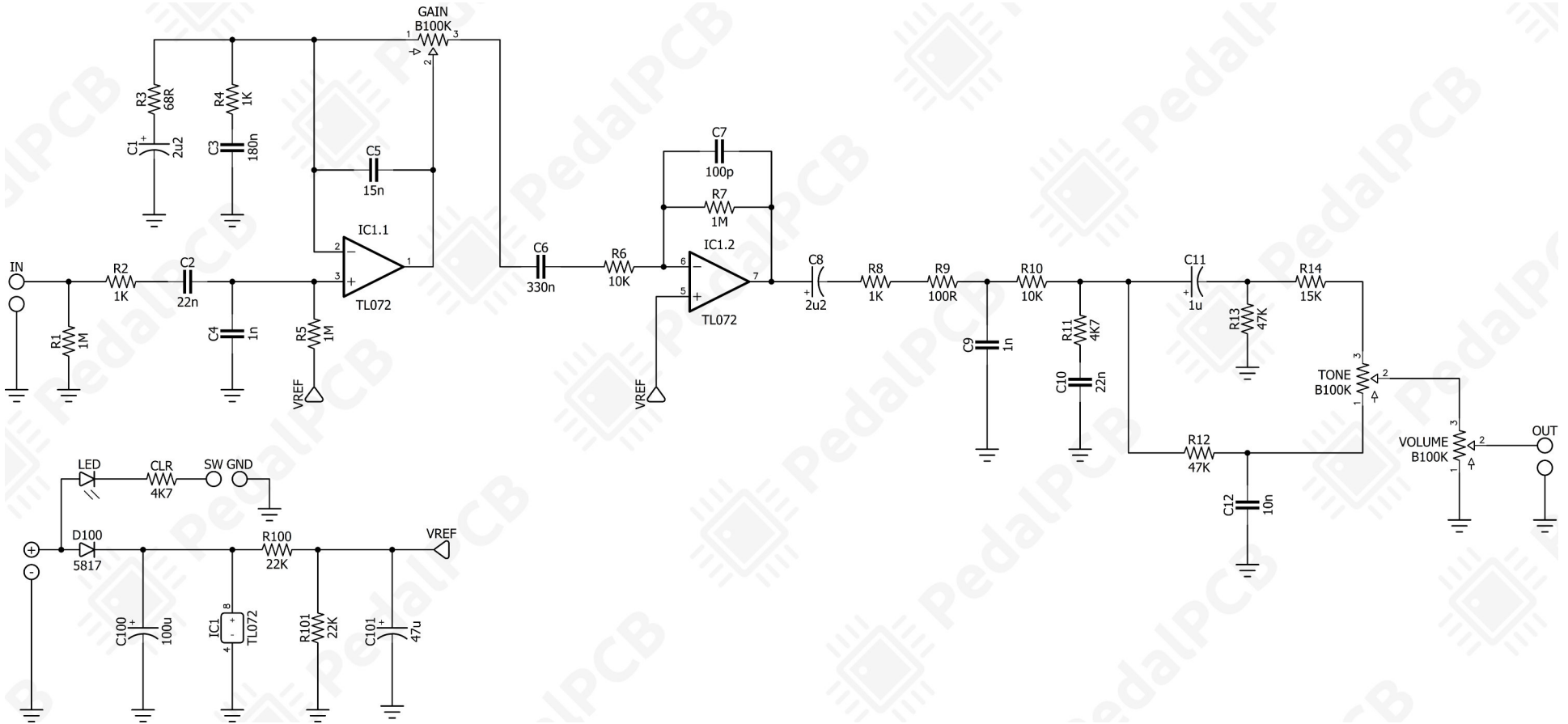
- Volume
- Tone
- Gain

All trademarks and registered trademarks are the property of their respective owners. The company, product, and service names used in this web site are for identification purposes only. Use of these names, logos, and brands does not imply endorsement.

LOCATION	VALUE	TYPE	NOTES
R1	1M	Resistor, 1/4W	
R2	1K	Resistor, 1/4W	
R3	68R	Resistor, 1/4W	
R4	1K	Resistor, 1/4W	
R5	1M	Resistor, 1/4W	
R6	10K	Resistor, 1/4W	
R7	1M	Resistor, 1/4W	
R8	1K	Resistor, 1/4W	
R9	100R	Resistor, 1/4W	
R10	10K	Resistor, 1/4W	
R11	4K7	Resistor, 1/4W	
R12	47K	Resistor, 1/4W	
R13	47K	Resistor, 1/4W	
R14	15K	Resistor, 1/4W	
R100	22K	Resistor, 1/4W	
R101	22K	Resistor, 1/4W	
CLR	4K7	Resistor, 1/4W	* LED current limiting resistor
C1	2u2	Electrolytic capacitor, 5mm	
C2	22n	Film capacitor, 7.2 x 2.5mm	
C3	180n	Film capacitor, 7.2 x 5.0mm	
C4	1n	Film capacitor, 7.2 x 2.5mm	
C5	15n	Film capacitor, 7.2 x 2.5mm	
C6	330n	Film capacitor, 7.2 x 5.0mm	
C7	100p	Ceramic capacitor	
C8	2u2	Electrolytic capacitor, 5mm	
C9	1n	Film capacitor, 7.2 x 2.5mm	
C10	22n	Film capacitor, 7.2 x 2.5mm	
C11	1u	Electrolytic capacitor, 5mm	
C12	10n	Film capacitor, 7.2 x 2.5mm	
C100	100u	Electrolytic capacitor, 5mm	
C101	47u	Electrolytic capacitor, 5mm	
D100	1N5817	Schottky diode, DO-41	
IC1	TL072	Dual op-amp, DIP8	
VOLUME	B100K	16mm right-angle PCB mount pot	
TONE	B100K	16mm right-angle PCB mount pot	
GAIN	B100K	16mm right-angle PCB mount pot	

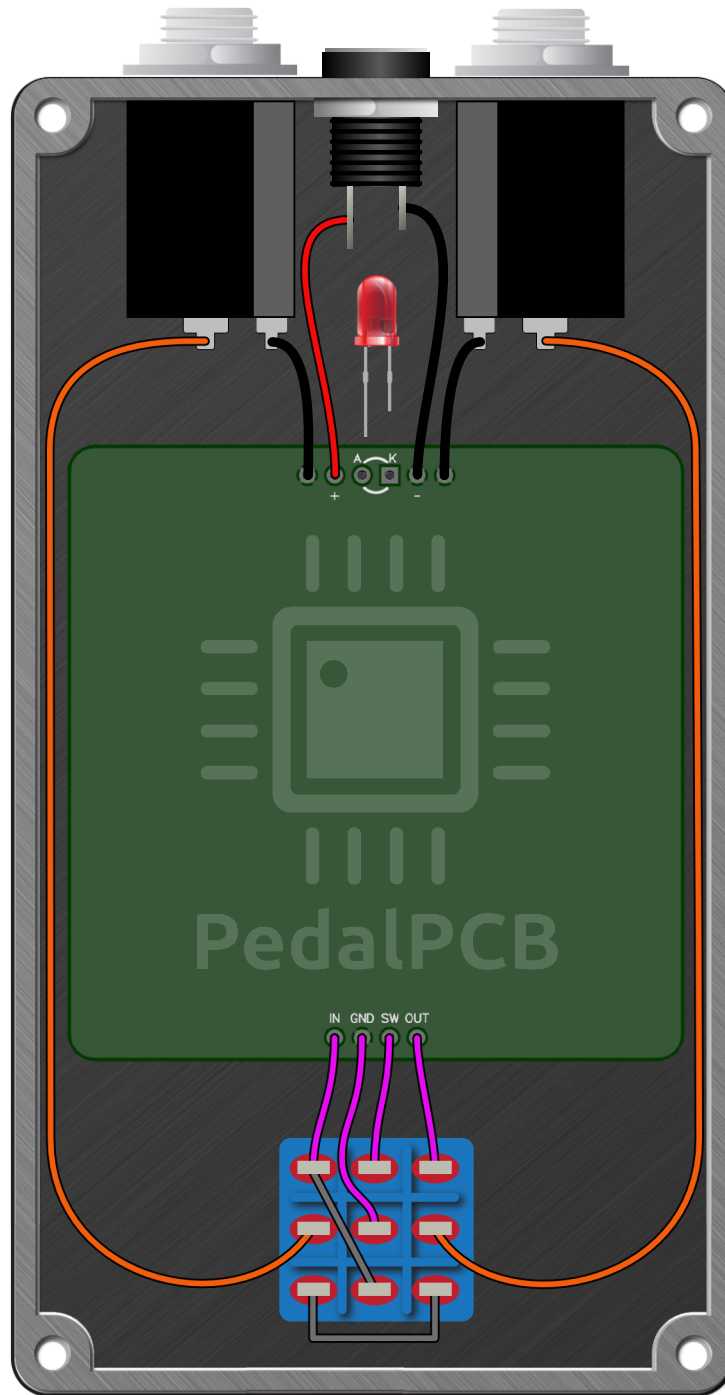
Ionosphere Fuzz

Schematic Diagram



Ionosphere Fuzz

Wiring Diagram



Ionosphere Fuzz

Drill Template
125B Enclosure

