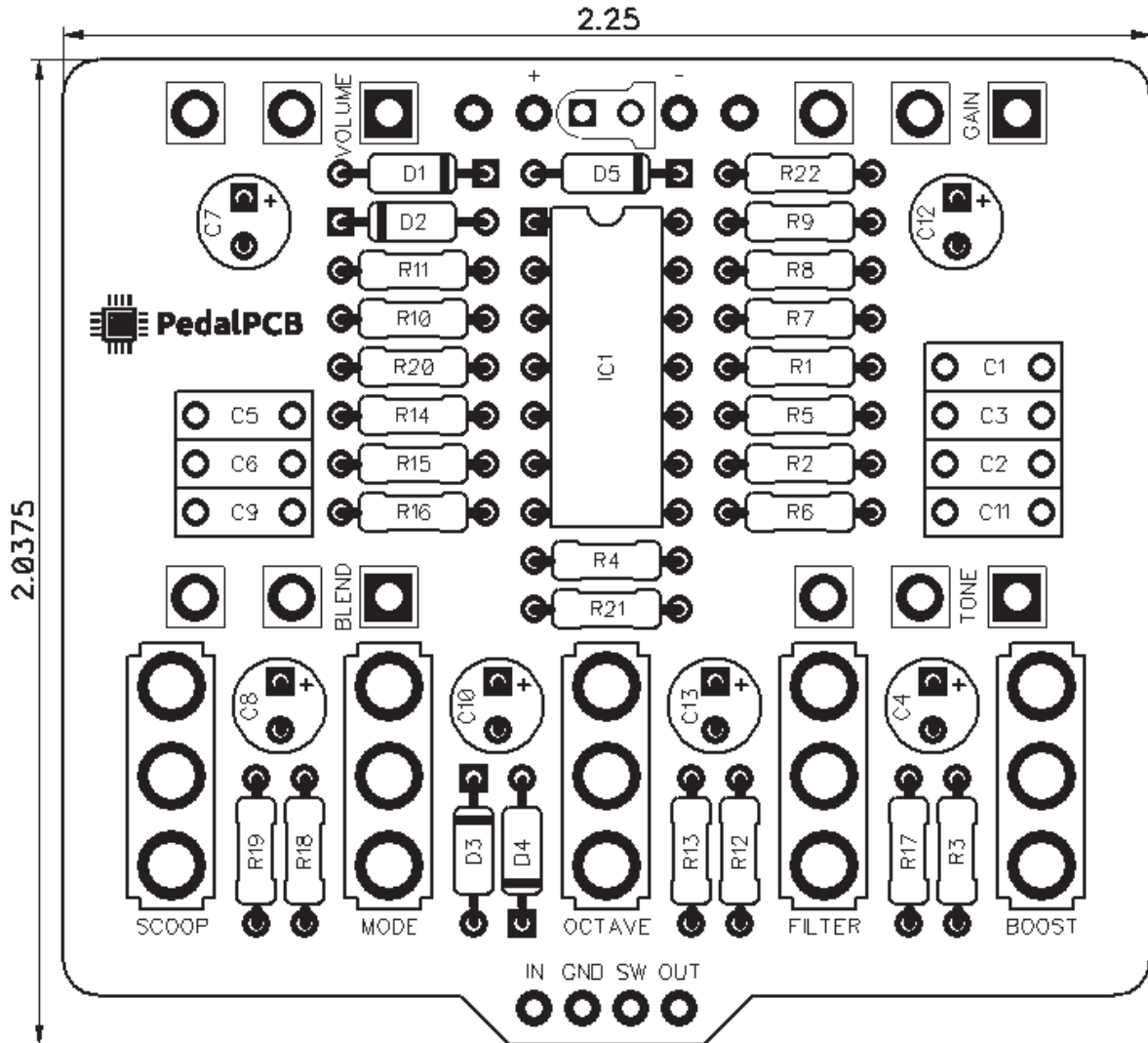




PedalPCB

InfiniDrive

Revision 03.01.19



Controls

- Parameter 1
- Parameter 2
- Parameter 3
- Volume
- Mix
- Mode (Rotary Switch)

RESISTORS (1/4W)

| | |
|-----|------|
| R1 | 330K |
| R2 | 100K |
| R3 | 10M |
| R4 | 10M |
| R5 | 1M |
| R6 | 220K |
| R7 | 220K |
| R8 | 100K |
| R9 | 100K |
| R10 | 10K |
| R11 | 10K |
| R12 | 10K |
| R13 | 5K |
| R14 | 100K |
| R15 | 1K |
| R16 | 1K |
| R17 | 3K9 |
| R18 | 10K |
| R19 | 1K |
| R20 | 10K |
| R21 | 10K |
| R22 | 4K7 |

CAPACITORS

| | |
|-----|-------|
| C1 | 10n |
| C2 | 1n |
| C3 | 1n |
| C4 | 1u |
| C5 | 10n |
| C6 | 470p* |
| C7 | 10u |
| C8 | 10u |
| C9 | 47n |
| C10 | 1u |
| C11 | 100n |
| C12 | 10u |
| C13 | 10u |

*Original used 47pF for C6 -
Increased to 470pF to prevent oscillation in some settings

SWITCHES

| | |
|--------|-------------------|
| MODE | SPDT (On/Off/On)* |
| BOOST | SPDT (On/On) |
| FILTER | SPDT (On/On) |
| OCTAVE | SPDT (On/On) |
| SCOOP | SPDT (On/On) |

*Original used SPDT (On/On) for MODE switch. - Three-position SPDT(On/Off/On) allows Soft, Hard, and No clipping diodes

INTEGRATED CIRCUITS

IC1 TL074

DIODES

| | |
|----|--------|
| D1 | 1N914 |
| D2 | 1N914 |
| D3 | 1N914 |
| D4 | 1N914 |
| D5 | 1N5817 |

POTENTIOMETERS

| | |
|--------|--------|
| VOLUME | A100K |
| GAIN | B500K |
| TONE | B10K |
| BLEND | A100K* |

*Original used A50K Blend pot -
Increased to A100K for better separation of clean/dirt signals

InfiniDrive

