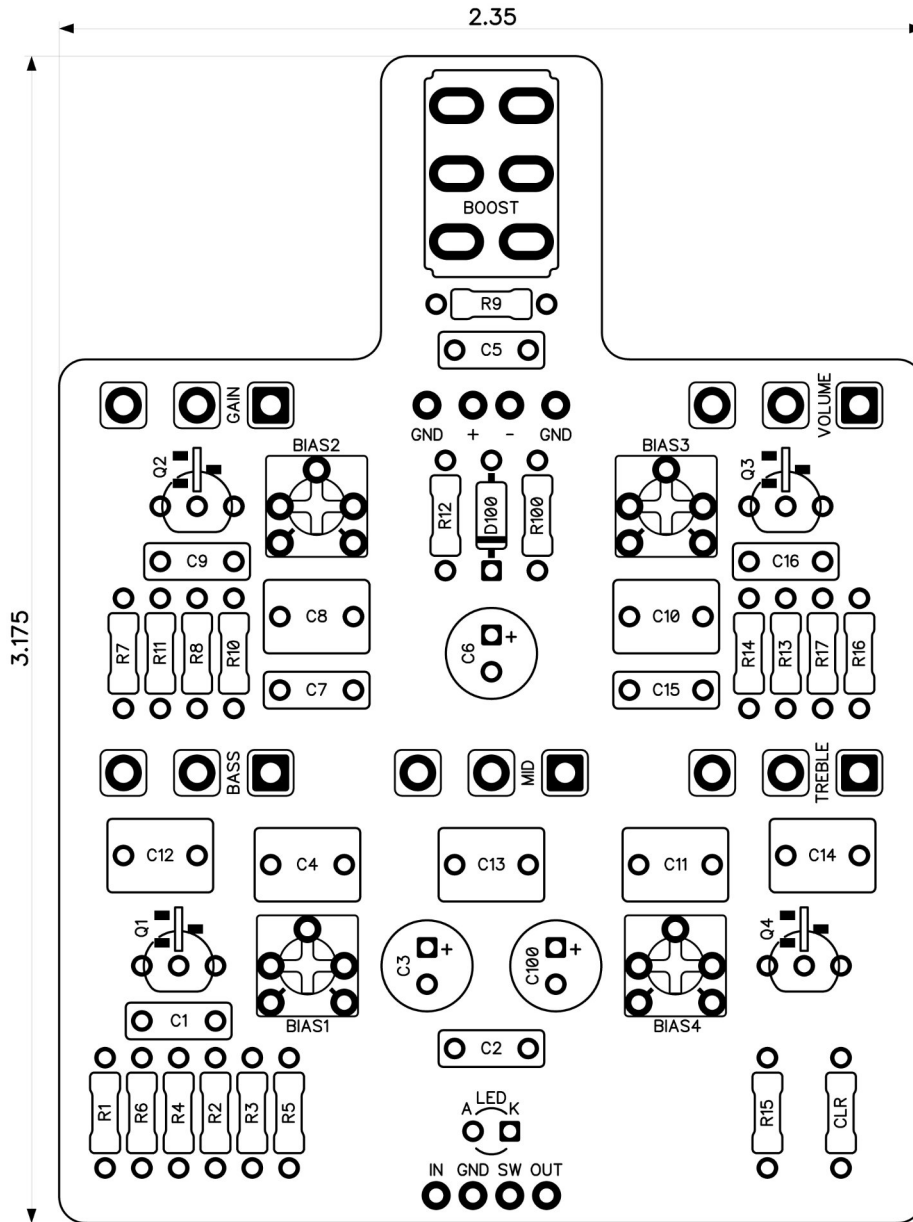


PedalPCB

Indiana Deluxe Overdrive

Revised 12/15/23



CONTROLS AND FEATURES

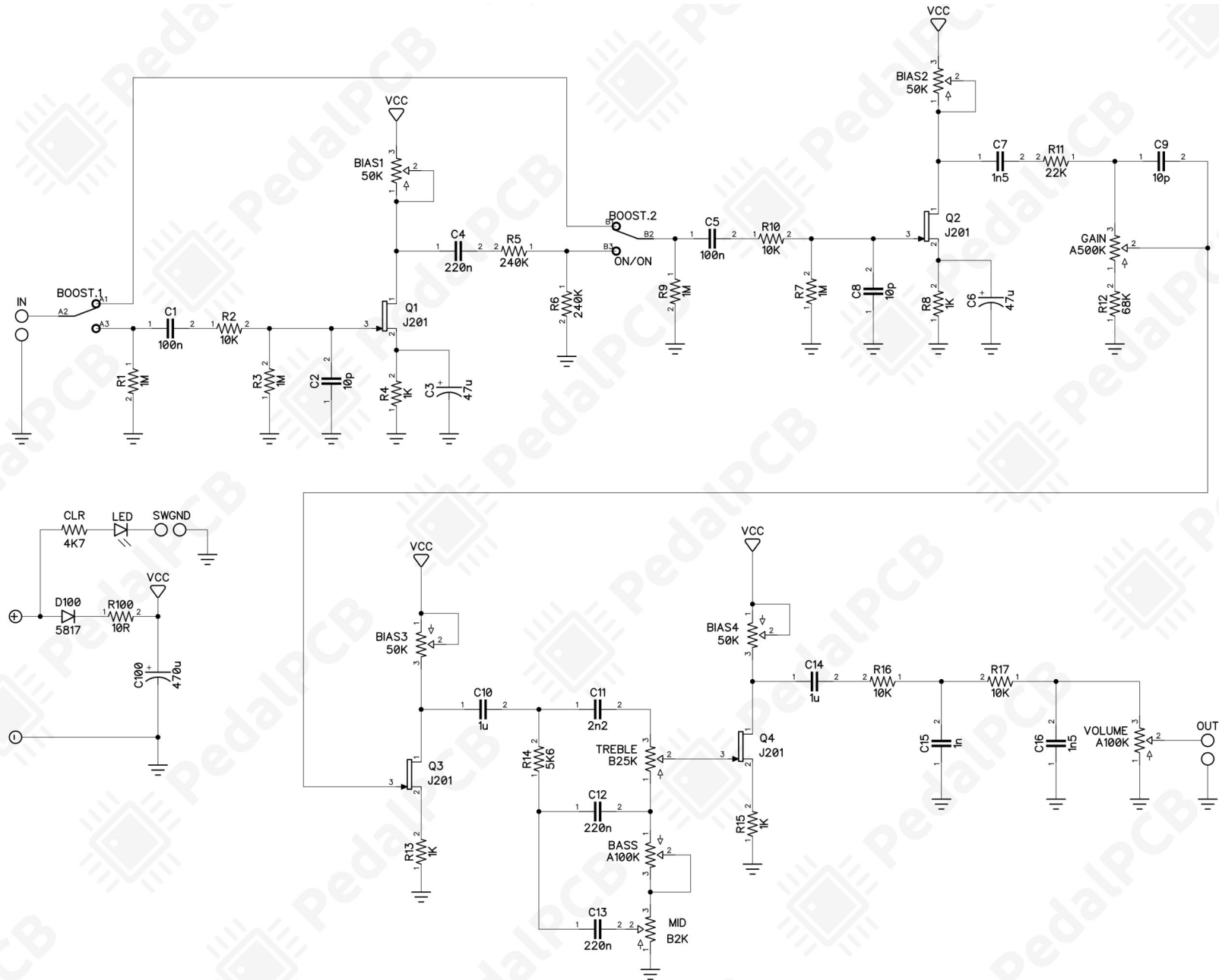
- Volume
- Gain
- Treble
- Mid
- Bass
- Boost (Toggle switch)

All trademarks and registered trademarks are the property of their respective owners. The company, product, and service names used in this web site are for identification purposes only. Use of these names, logos, and brands does not imply endorsement.

LOCATION	VALUE	TYPE	NOTES
R1	1M	Resistor, 1/4W	
R2	10K	Resistor, 1/4W	
R3	1M	Resistor, 1/4W	
R4	1K	Resistor, 1/4W	
R5	240K	Resistor, 1/4W	
R6	240K	Resistor, 1/4W	
R7	1M	Resistor, 1/4W	
R8	1K	Resistor, 1/4W	
R9	1M	Resistor, 1/4W	
R10	10K	Resistor, 1/4W	
R11	22K	Resistor, 1/4W	
R12	68K	Resistor, 1/4W	
R13	1K	Resistor, 1/4W	
R14	5K6	Resistor, 1/4W	
R15	1K	Resistor, 1/4W	
R16	10K	Resistor, 1/4W	
R17	10K	Resistor, 1/4W	
R100	10R	Resistor, 1/4W	
CLR	4K7	Resistor, 1/4W	* LED current limiting resistor
C1	100n	Film capacitor, 7.2 x 2.5mm	
C2	10p	Ceramic capacitor	
C3	47u	Electrolytic capacitor, 5mm	
C4	220n	Film capacitor, 7.2 x 5.0mm	
C5	100n	Film capacitor, 7.2 x 2.5mm	
C6	47u	Electrolytic capacitor, 5mm	
C7	1n5	Film capacitor, 7.2 x 2.5mm	
C8	10p	Ceramic capacitor	
C9	10p	Ceramic capacitor	
C10	1u	Film capacitor, 7.2 x 5.0mm	
C11	2n2	Film capacitor, 7.2 x 2.5mm	
C12	220n	Film capacitor, 7.2 x 5.0mm	
C13	220n	Film capacitor, 7.2 x 5.0mm	
C14	1u	Film capacitor, 7.2 x 5.0mm	
C15	1n	Film capacitor, 7.2 x 2.5mm	
C16	1n5	Film capacitor, 7.2 x 2.5mm	
C100	470u	Electrolytic capacitor, 5mm	
D100	1N5817	Schottky diode, DO-41	
Q1	J201	JFET transistor, N-channel	
Q2	J201	JFET transistor, N-channel	
Q3	J201	JFET transistor, N-channel	
Q4	J201	JFET transistor, N-channel	
BIAS1	50K	Trimmer potentiometer, 3362P type	
BIAS2	50K	Trimmer potentiometer, 3362P type	
BIAS3	50K	Trimmer potentiometer, 3362P type	
BIAS4	50K	Trimmer potentiometer, 3362P type	
VOLUME	A100K	16mm right-angle PCB mount pot	
GAIN	A500K	16mm right-angle PCB mount pot	
TREBLE	B25K	16mm right-angle PCB mount pot	
MID	B2K	16mm right-angle PCB mount pot	
BASS	A100K	16mm right-angle PCB mount pot	
BOOST	DPDT	Toggle switch, DPDT	2-position (ON/ON)

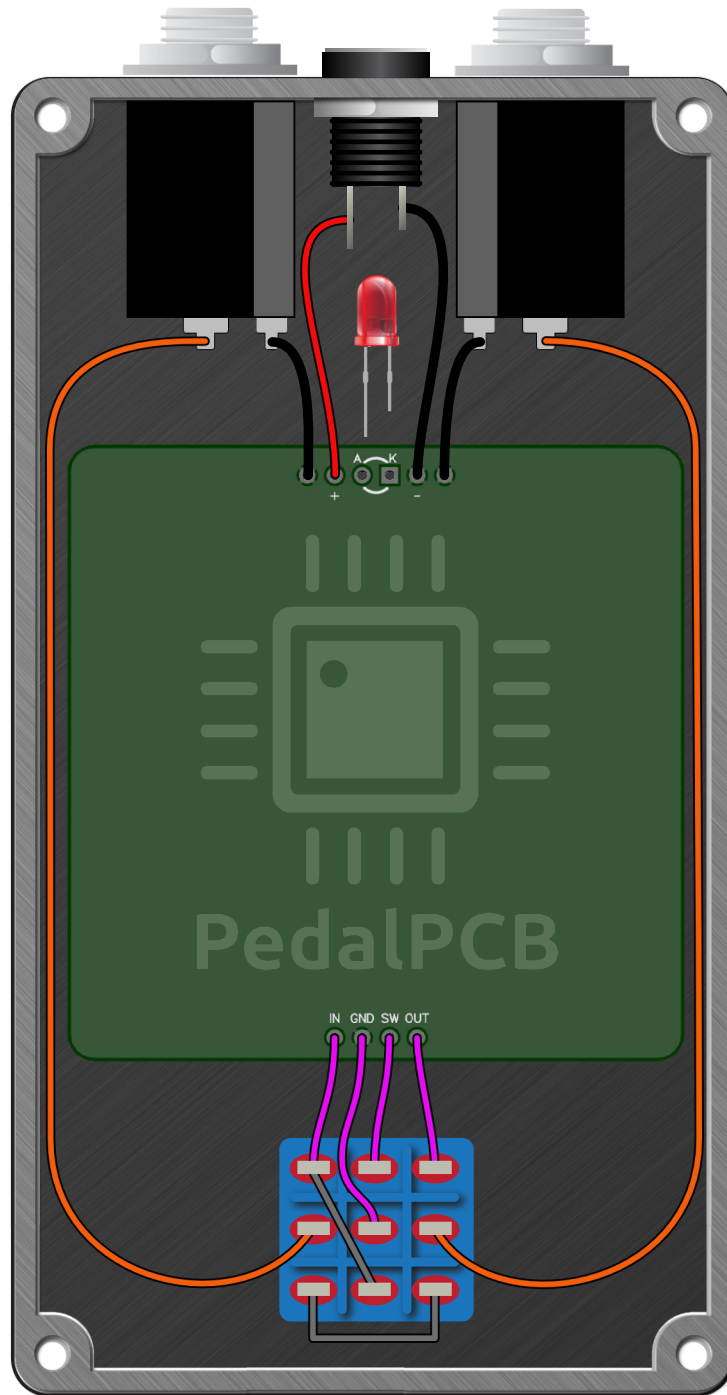
Indiana Deluxe Overdrive

Schematic Diagram



Indiana Deluxe Overdrive

Wiring Diagram



Indiana Deluxe Overdrive

Drill Template
125B Enclosure

