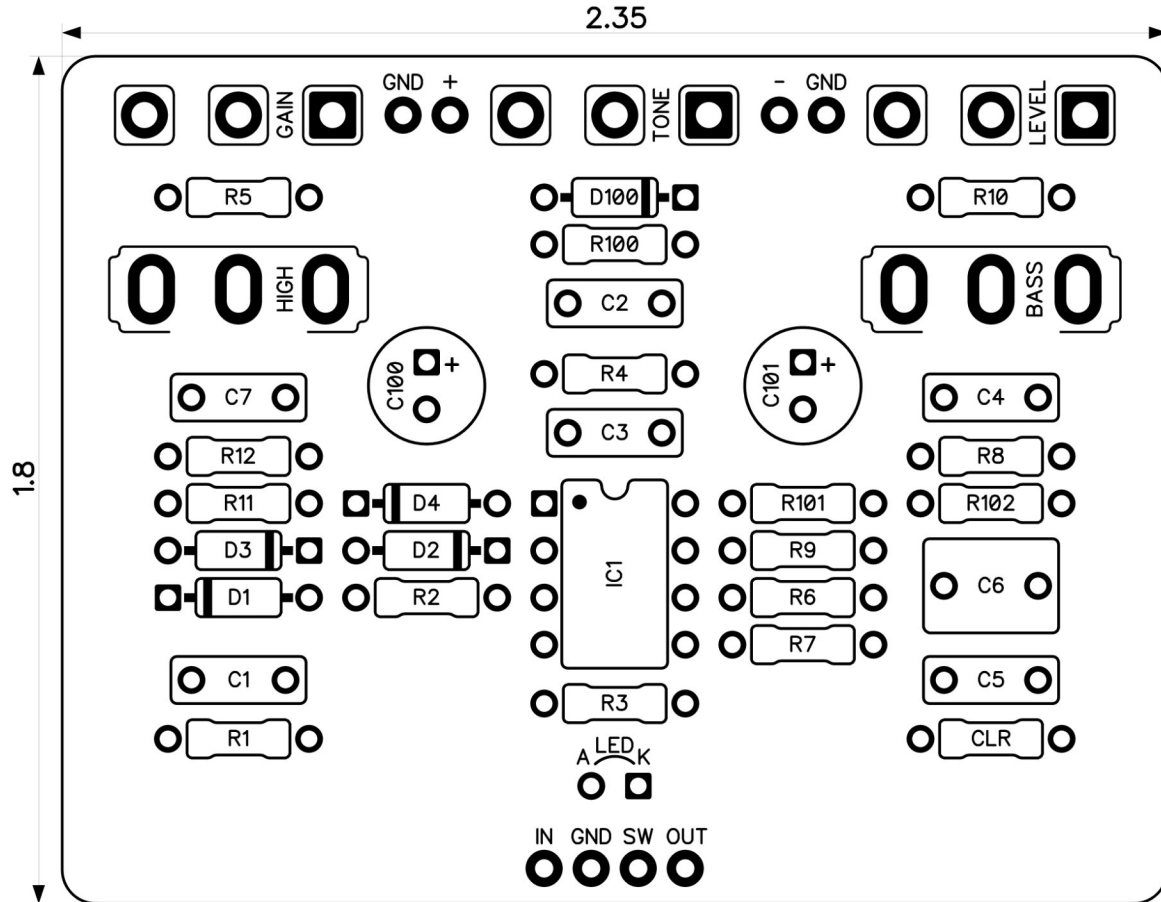




# Increment Overdrive

Revised 9/16/25



## CONTROLS AND FEATURES

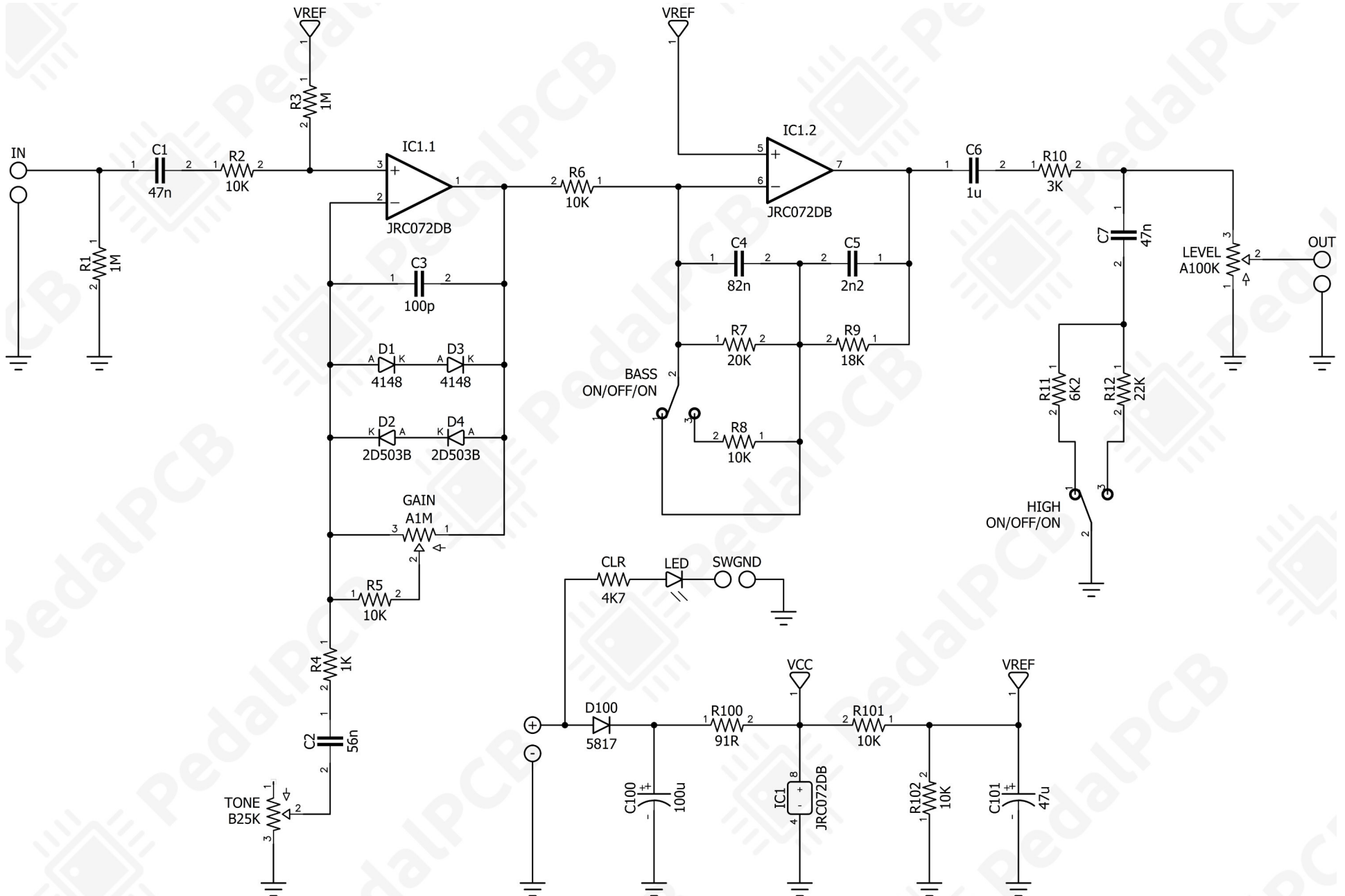
- Level
- Tone
- Gain
- Bass (Toggle switch)
- High (Toggle switch)

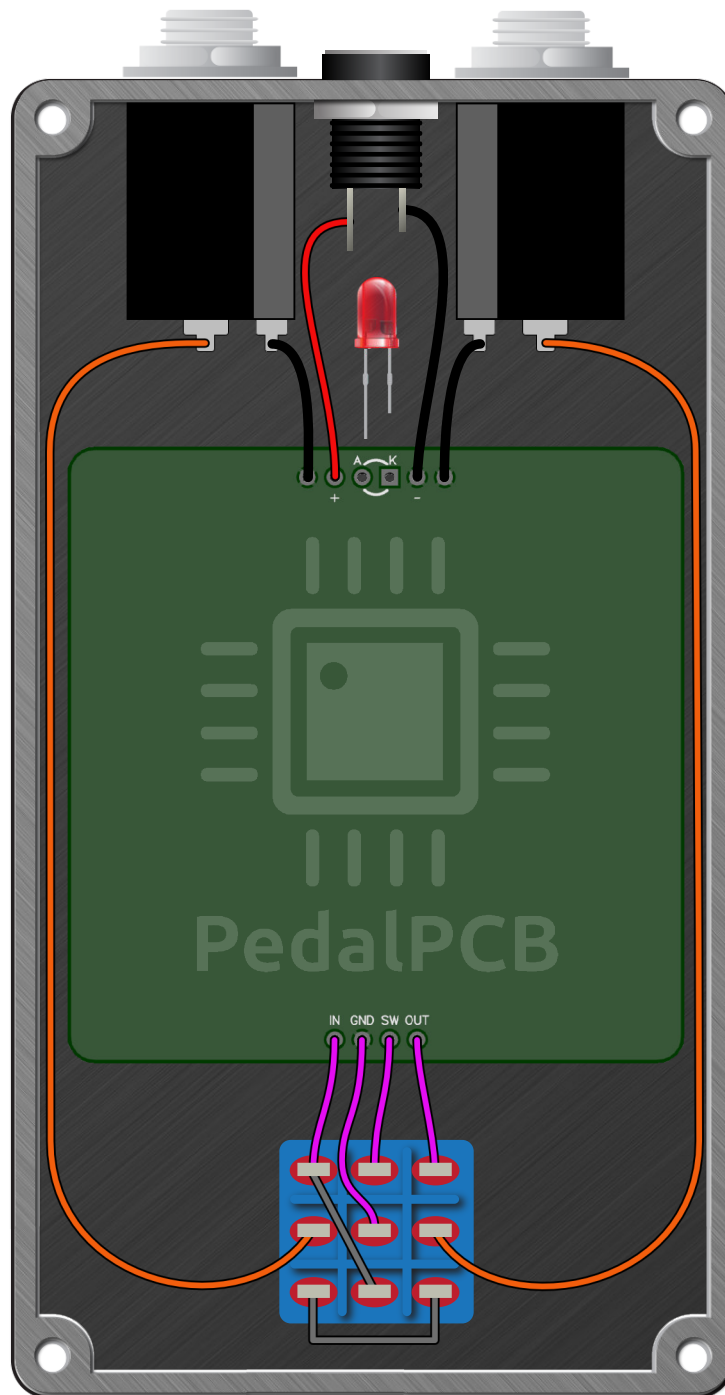
All trademarks and registered trademarks are the property of their respective owners. The company, product, and service names used in this web site are for identification purposes only. Use of these names, logos, and brands does not imply endorsement.

LOCATION	VALUE	TYPE	NOTES
R1	1M	Resistor, 1/4W	
R2	10K	Resistor, 1/4W	
R3	1M	Resistor, 1/4W	
R4	1K	Resistor, 1/4W	
R5	10K	Resistor, 1/4W	
R6	10K	Resistor, 1/4W	
R7	20K	Resistor, 1/4W	
R8	10K	Resistor, 1/4W	
R9	18K	Resistor, 1/4W	
R10	3K	Resistor, 1/4W	
R11	6K2	Resistor, 1/4W	
R12	22K	Resistor, 1/4W	
R100	91R	Resistor, 1/4W	
R101	10K	Resistor, 1/4W	
R102	10K	Resistor, 1/4W	
CLR	4K7	Resistor, 1/4W	* LED current limiting resistor
C1	47n	Film capacitor, 7.2 x 2.5mm	
C2	56n	Film capacitor, 7.2 x 2.5mm	
C3	100p	Ceramic capacitor	
C4	82n	Film capacitor, 7.2 x 2.5mm	
C5	2n2	Film capacitor, 7.2 x 2.5mm	
C6	1u	Film capacitor, 7.2 x 5.0mm	
C7	47n	Film capacitor, 7.2 x 2.5mm	
C100	100u	Electrolytic capacitor, 5mm	
C101	47u	Electrolytic capacitor, 5mm	
D1	1N4148	Signal diode, DO-35	
D2	2D503B	Signal diode, DO-35	<a href="#">[Link]</a>
D3	1N4148	Signal diode, DO-35	
D4	2D503B	Signal diode, DO-35	<a href="#">[Link]</a>
D100	1N5817	Schottky diode, DO-41	
IC1	JRC072DB	Dual op-amp, DIP8	
LEVEL	A100K	16mm right-angle PCB mount pot	
TONE	B25K	16mm right-angle PCB mount pot	
GAIN	A1M	16mm right-angle PCB mount pot	
BASS	ON/OFF/ON	Toggle switch, SPDT	3-position (ON/OFF/ON)
HIGH	ON/OFF/ON	Toggle switch, SPDT	3-position (ON/OFF/ON)

# Increment Overdrive

Schematic Diagram





# Increment Overdrive

Drill Template  
125B Enclosure

