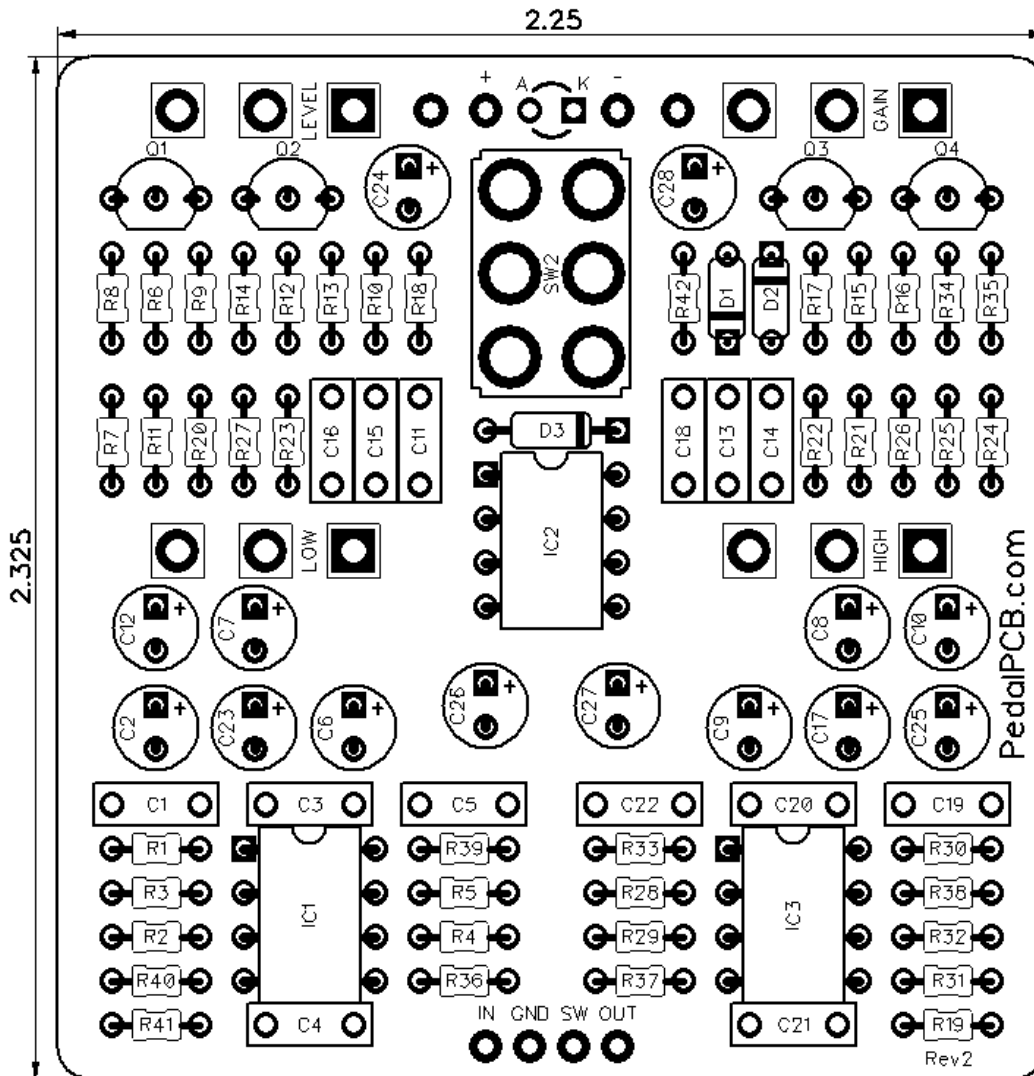


PedalPCB

Hyped Fuzz

Revision 08.09.20



Controls

- **Level** - Controls the overall output volume
- **Gain** - Controls the amount of fuzz
- **Treble** - Boosts/cuts treble frequencies
- **Bass** - Boosts/cuts bass frequencies
- **Mode** - Selects between Fuzz I / Gain Boost / Fuzz II

All trademarks and registered trademarks are the property of their respective owners. The company, product, and service names used in this web site are for identification purposes only. Use of these names, logos, and brands does not imply endorsement.

RESISTORS (1/8W)

R1 10K
R2 1M
R3 1K5
R4 2K2
R5 10K
R6 220K
R7 100K
R8 4K7
R9 10K
R10 1K
R11 1K
R12 100K
R13 27K
R14 10K
R15 1K8
R16 100K
R17 27K
R18 10K
R19 47K
R20 10K
R21 10K
R22 10K
R23 27K
R24 10K
R25 120K
R26 1K
R27 1K
R28 100K
R29 10K
R30 3K3
R31 100K
R32 3K3
R33 10K
R34 100K
R35 10K
R36 100K
R37 1K
R38 4K7
R39 10K
R40 10K
R41 1M
R42 100K

CAPACITORS

C1 47n
C2 2u2
C3 100n
C4 47p
C5 33n
C6 10u
C7 1u
C8 1u
C9 47u
C10 1u
C11 15n
C12 1u
C13 1n
C14 47n
C15 47p
C16 4n7
C17 1u
C18 10p
C19 15n
C20 150n
C21 47n
C22 47p
C23 10u
C24 1u
C25 10u
C26 100u
C27 47u
C28 10u

INTEGRATED CIRCUITS

IC1 TL072
IC2 JRC4558
IC3 JRC4558

TRANSISTORS

Q1 BC549C
Q2 BC549C
Q3 BC549C
Q4 BC549C

DIODES

D1 1N914
D2 1N914
D3 1N5817

POTENTIOMETERS

LEVEL A50K
GAIN A50K
HIGH B50K
LOW B50K

SWITCHES

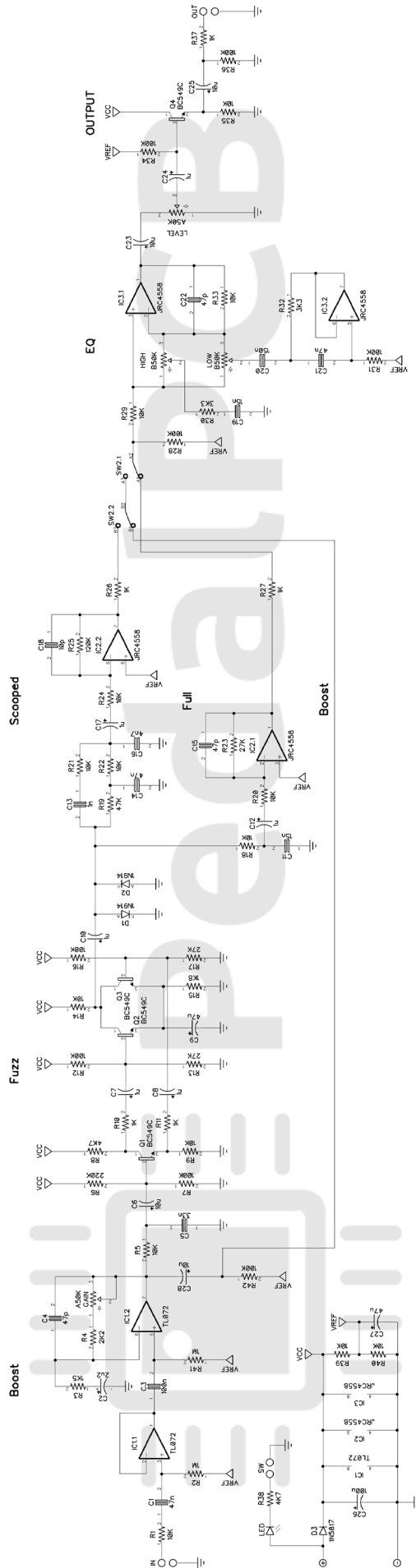
MODE DPDT Toggle
(On/On/On - Type 2)

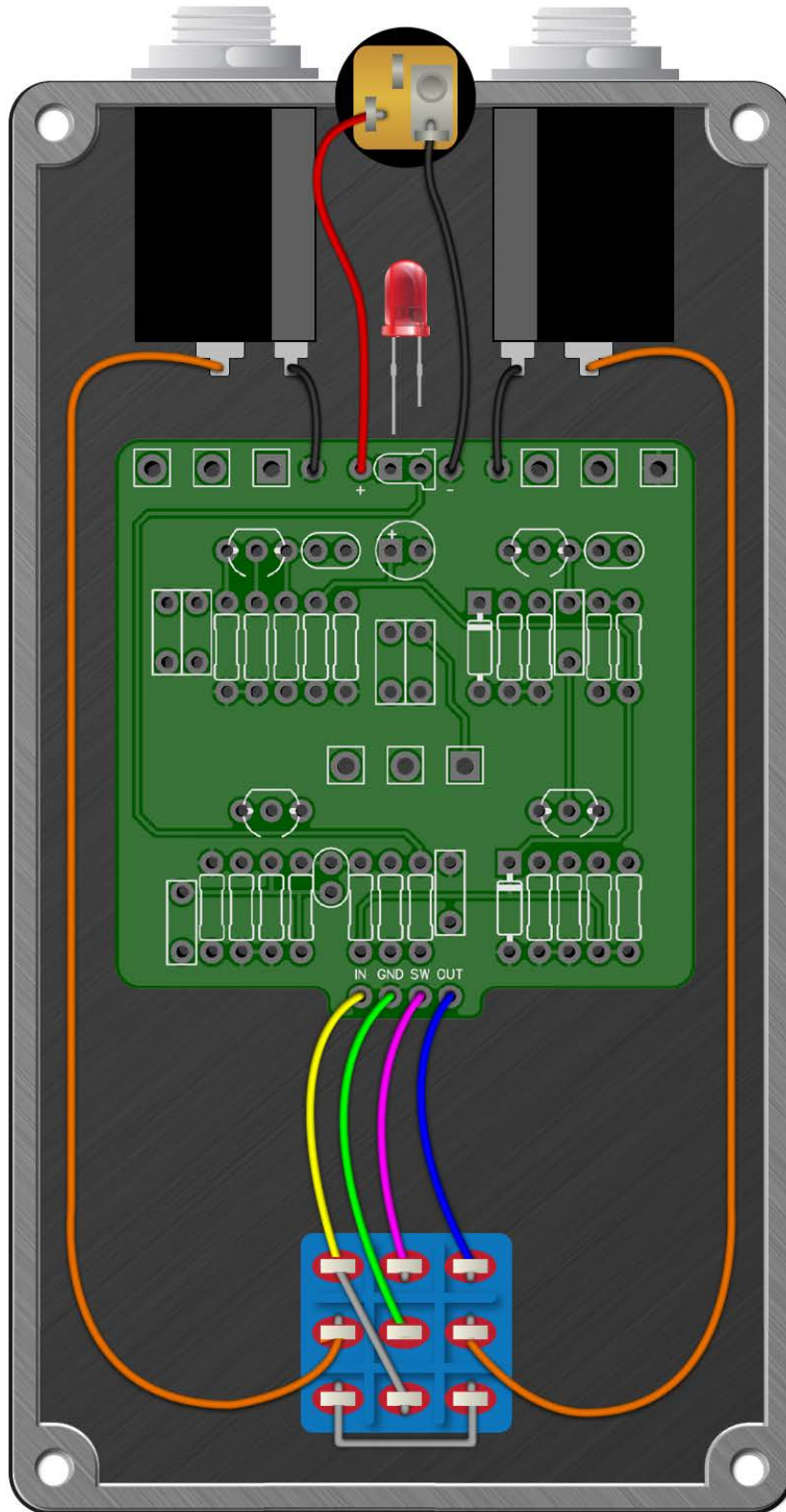
Recommended part numbers:

100-DP6-T200B1M1QE
100-DP6-T100B1M1QE



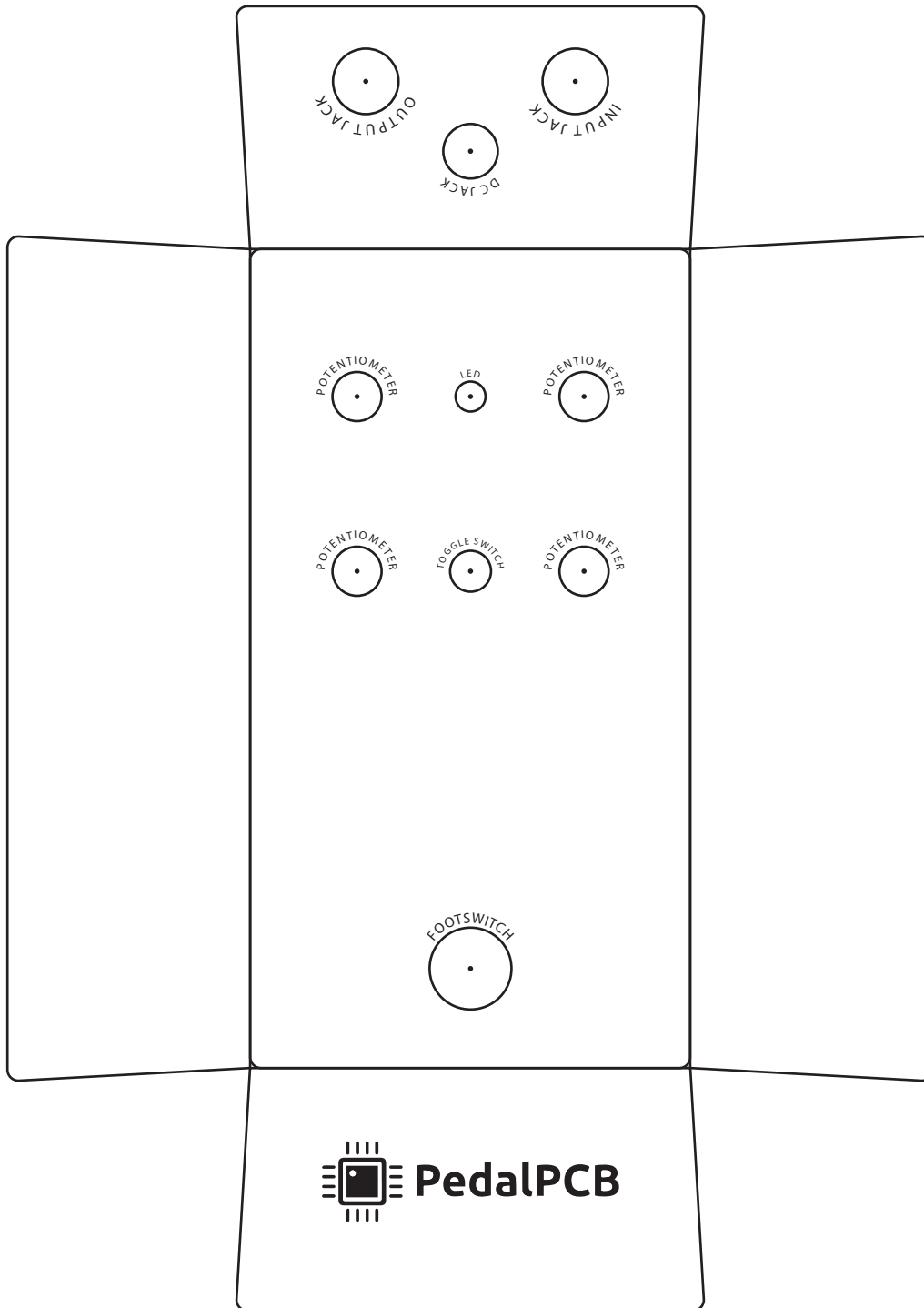
Hyped Fuzz





Hyped Fuzz

Drill Template
125B enclosure with top mounted jacks



NOTE: Drill template is for v2 PCB only.

SPDT Mode Switch - v1
DPDT Mode Switch - v2