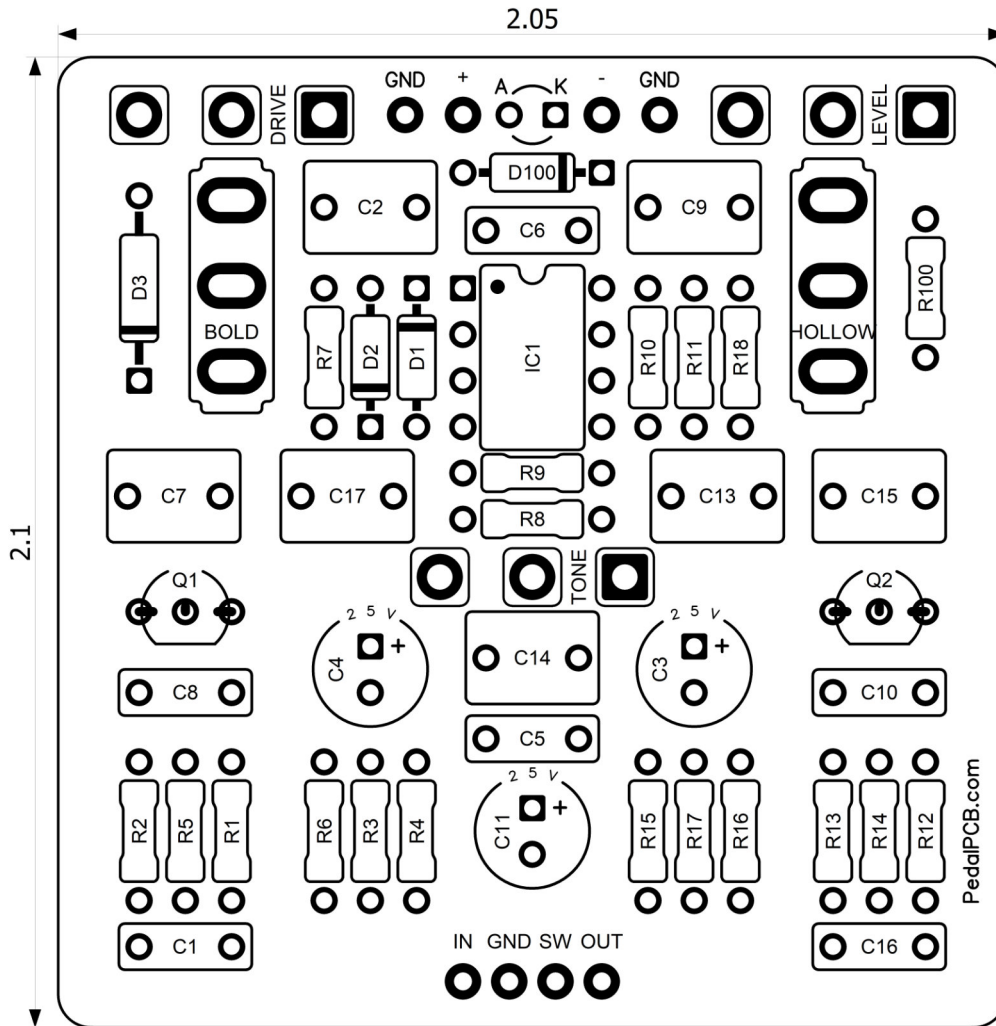


# PedalPCB

## Honeysuckle Overdrive

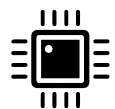
Revised 6/18/22



### CONTROLS AND FEATURES

- Level
- Tone
- Drive
- Hollow (Toggle Switch)
- Bold (Toggle Switch)

*All trademarks and registered trademarks are the property of their respective owners. The company, product, and service names used in this web site are for identification purposes only. Use of these names, logos, and brands does not imply endorsement.*



LOCATION	VALUE	TYPE	NOTES
R1	1K	Resistor, 1/4W	
R2	10K	Resistor, 1/4W	
R3	15K	Resistor, 1/4W	
R4	10K	Resistor, 1/4W	
R5	10K	Resistor, 1/4W	
R6	510K	Resistor, 1/4W	
R7	51K	Resistor, 1/4W	
R8	4K7	Resistor, 1/4W	
R9	1K	Resistor, 1/4W	
R10	1K	Resistor, 1/4W	
R11	1K	Resistor, 1/4W	
R12	510K	Resistor, 1/4W	
R13	100R	Resistor, 1/4W	
R14	10K	Resistor, 1/4W	
R15	10K	Resistor, 1/4W	
R16	13K3	Resistor, 1/4W	
R17	220R	Resistor, 1/4W	
R18	1K	Resistor, 1/4W	
R100	4K7	Resistor, 1/4W	
C1	22n	Film capacitor, 7.2 x 2.5mm	
C2	1u	Film capacitor, 7.2 x 5.0mm	
C3	100u	Electrolytic capacitor, 6.35mm	
C4	220u	Electrolytic capacitor, 6.35mm	
C5	100n	Film capacitor, 7.2 x 2.5mm	
C6	51p	Ceramic capacitor	
C7	47n	Film capacitor, 7.2 x 2.5mm	
C8	100n	Film capacitor, 7.2 x 2.5mm	
C9	1u	Film capacitor, 7.2 x 5.0mm	
C10	100n	Film capacitor, 7.2 x 2.5mm	
C11	10u	Electrolytic capacitor, 6.35mm	
C13	220n	Film capacitor, 7.2 x 5.0mm	
C14	220n	Film capacitor, 7.2 x 5.0mm	
C15	150n	Film capacitor, 7.2 x 5.0mm	
C16	100n	Film capacitor, 7.2 x 2.5mm	
C17	1n	Film capacitor, 7.2 x 2.5mm	
D1	MA150	Signal diode, DO-35	
D2	MA150	Signal diode, DO-35	
D3	GE	Germanium diode	
D100	1N5817	Schottky diode, DO-41	
Q1	2SC1815	BJT transistor, NPN TO-18	
Q2	2SC1815	BJT transistor, NPN TO-18	
IC1	JRC4558	Dual op-amp, DIP8	
		<i>Continued on next page...</i>	



# Honeysuckle Overdrive

## Parts List (Page 2 of 2)

[illegible]

