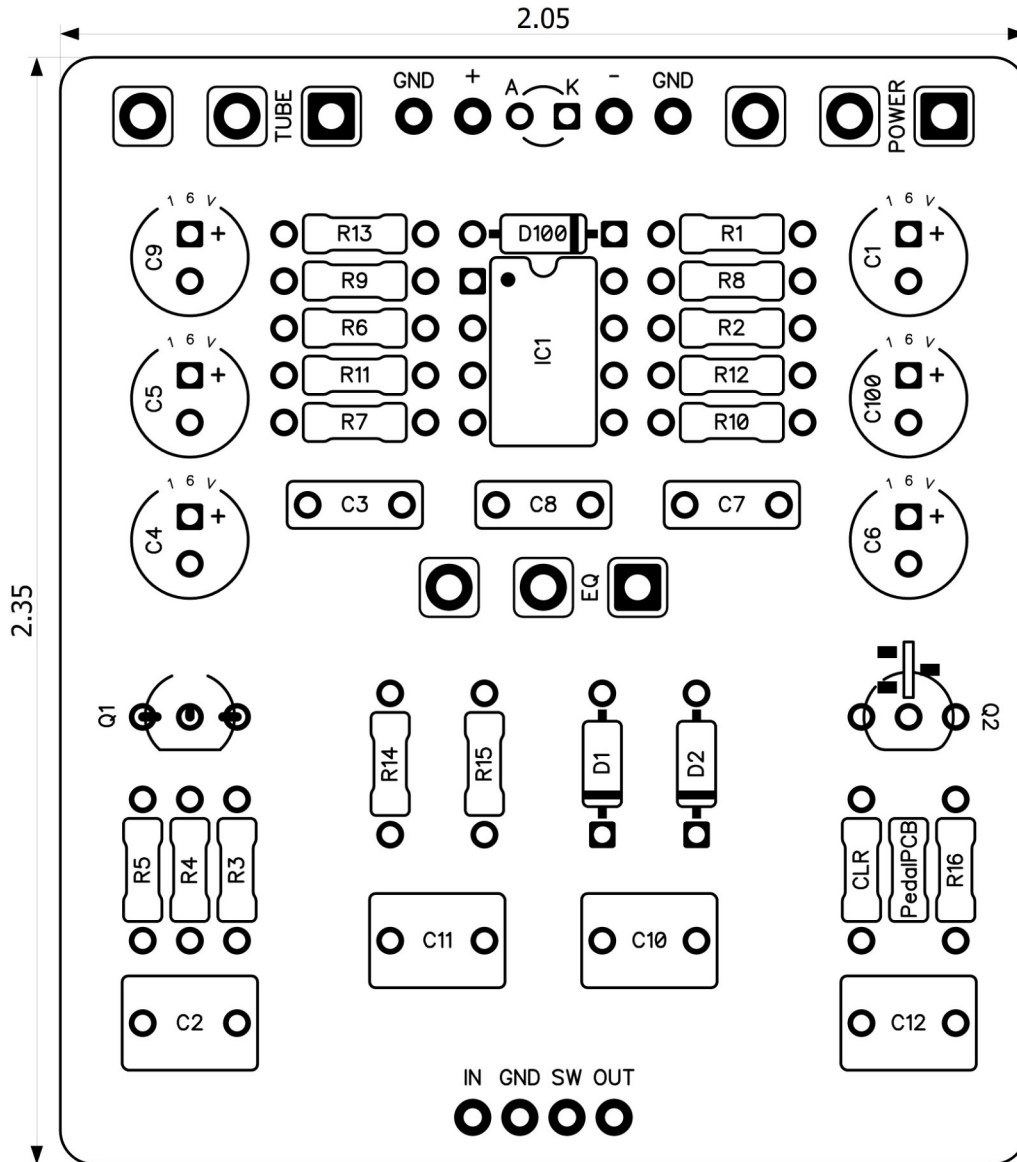




Hen's Tooth Distortion

Revised 12/19/23



CONTROLS AND FEATURES

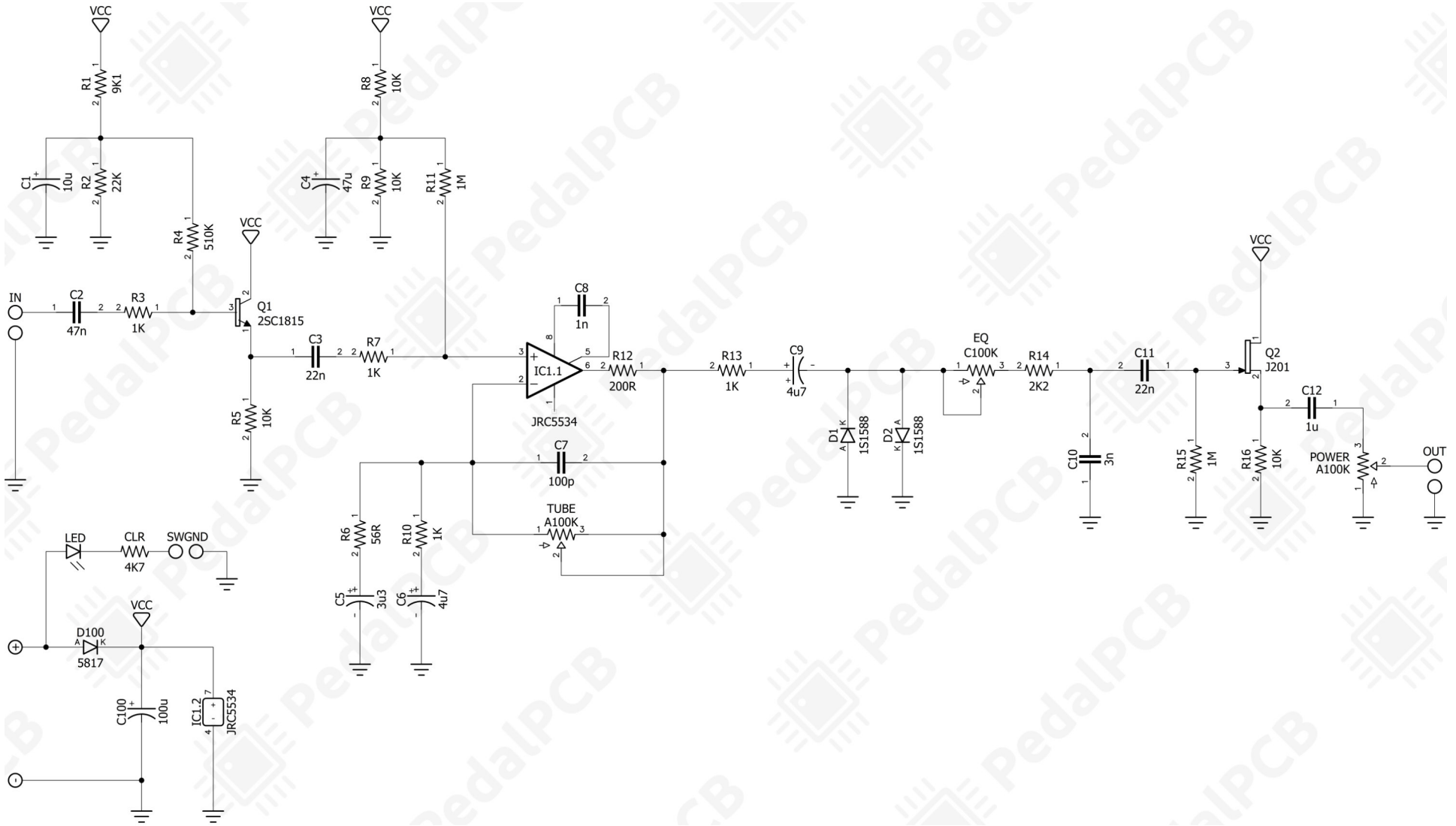
- Volume
- Drive
- Treble
- Mid
- Bass

All trademarks and registered trademarks are the property of their respective owners. The company, product, and service names used in this web site are for identification purposes only. Use of these names, logos, and brands does not imply endorsement.

LOCATION	VALUE	TYPE	NOTES
R1	9K1	Resistor, 1/4W	
R2	22K	Resistor, 1/4W	
R3	1K	Resistor, 1/4W	
R4	510K	Resistor, 1/4W	
R5	10K	Resistor, 1/4W	
R6	56R	Resistor, 1/4W	
R7	1K	Resistor, 1/4W	
R8	10K	Resistor, 1/4W	
R9	10K	Resistor, 1/4W	
R10	1K	Resistor, 1/4W	
R11	1M	Resistor, 1/4W	
R12	200R	Resistor, 1/4W	
R13	1K	Resistor, 1/4W	
R14	2K2	Resistor, 1/4W	
R15	1M	Resistor, 1/4W	
R16	10K	Resistor, 1/4W	
CLR	4K7	Resistor, 1/4W	* LED current limiting resistor
C1	10u	Electrolytic capacitor, 5mm	
C2	47n	Film capacitor, 7.2 x 2.5mm	
C3	22n	Film capacitor, 7.2 x 2.5mm	
C4	47u	Electrolytic capacitor, 5mm	
C5	3u3	Electrolytic capacitor, 5mm	
C6	4u7	Electrolytic capacitor, 5mm	
C7	100p	Ceramic capacitor	
C8	1n	Film capacitor, 7.2 x 2.5mm	
C9	4u7	Electrolytic capacitor, 5mm	
C10	3n	Film capacitor, 7.2 x 2.5mm	
C11	22n	Film capacitor, 7.2 x 2.5mm	
C12	1u	Film capacitor, 7.2 x 5.0mm	
C100	100u	Electrolytic capacitor, 5mm	
D1	1S1588	Signal diode, DO-35	
D2	1S1588	Signal diode, DO-35	
D100	1N5817	Schottky diode, DO-41	
Q1	2SC1815	BJT transistor, NPN TO-92	
Q2	J201	JFET transistor, N-channel	
IC1	JRC5534	Dual op-amp, DIP8	
POWER	A100K	16mm right-angle PCB mount pot	
EQ	C100K	16mm right-angle PCB mount pot	
TUBE	A100K	16mm right-angle PCB mount pot	

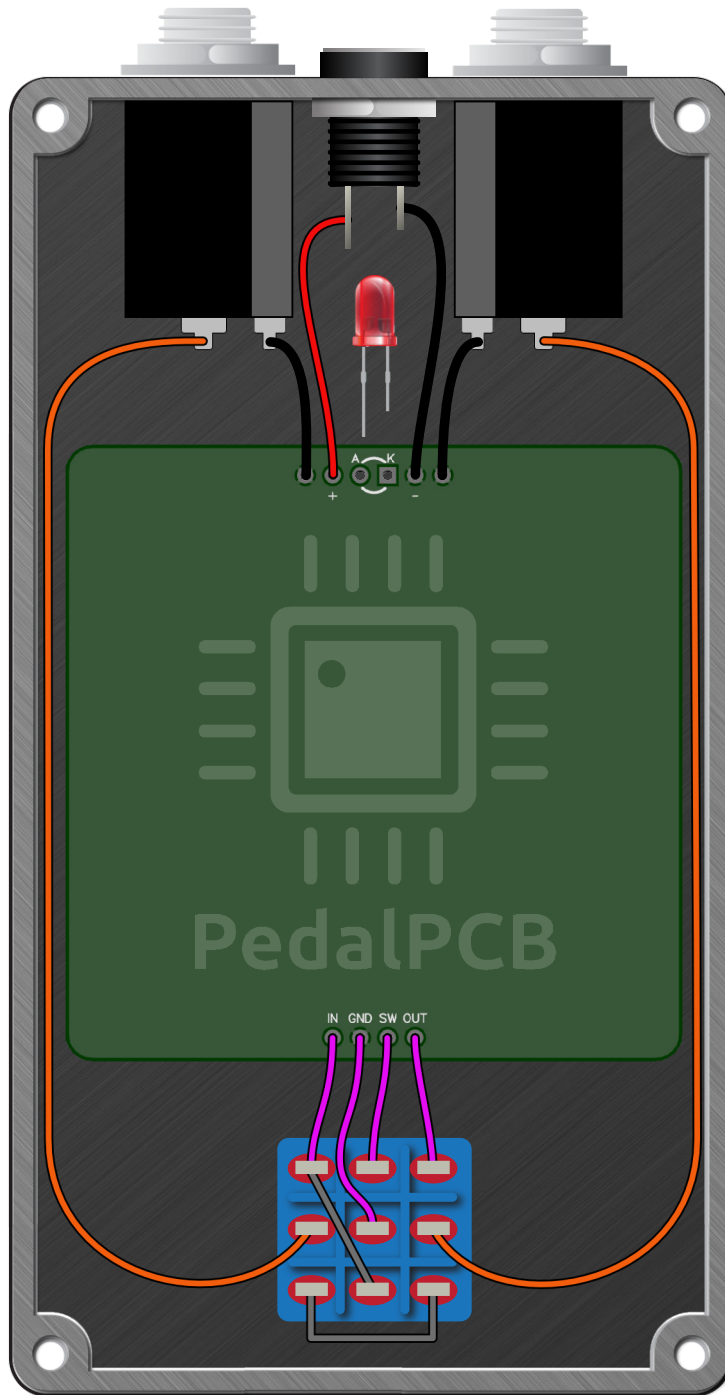
Hen's Tooth Distortion

Schematic Diagram



Hen's Tooth Distortion

Wiring Diagram



Hen's Tooth Distortion

Drill Template
125B Enclosure

