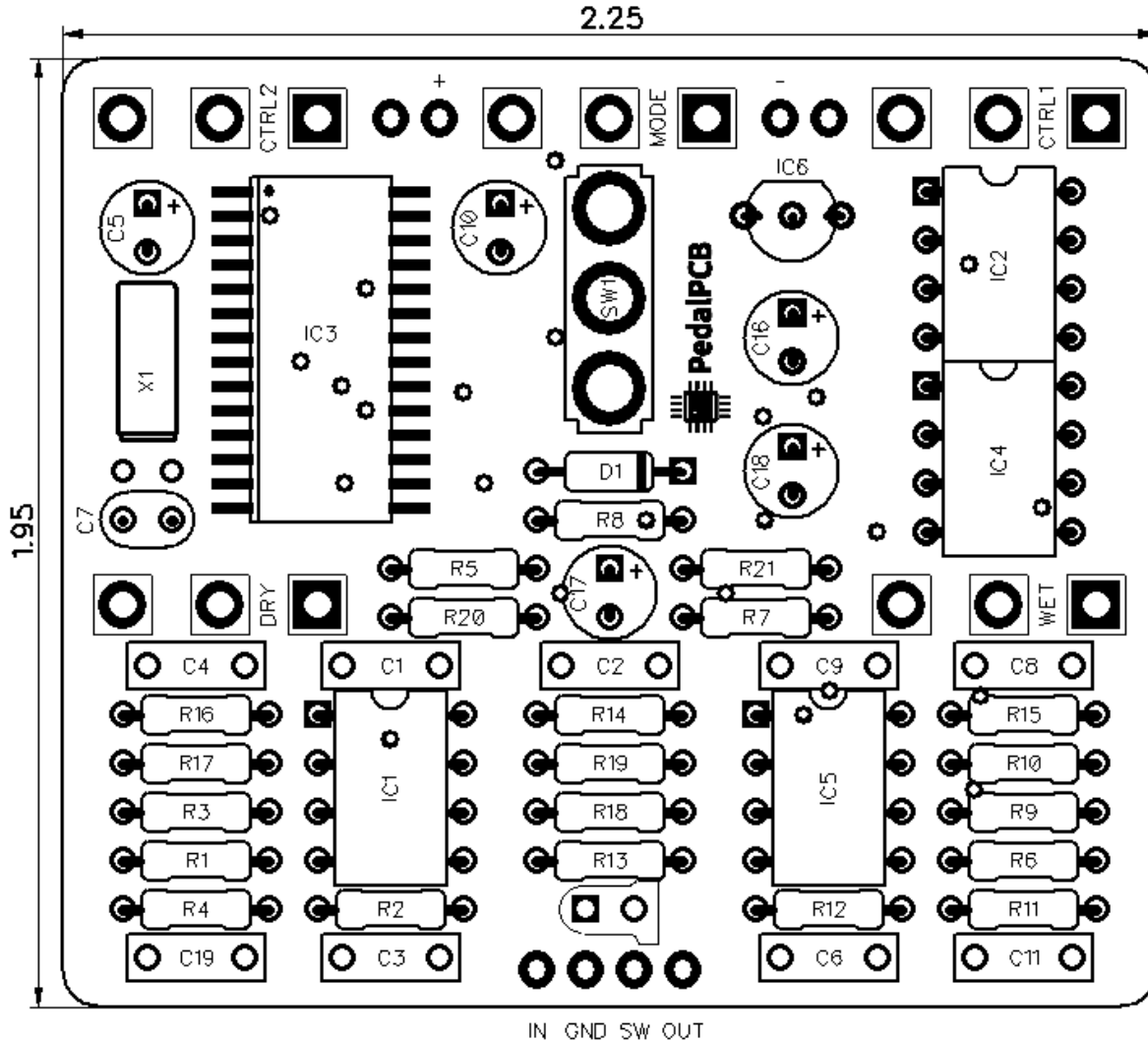




PedalPCB

HAARP

Revision 12.28.18



Controls

- **Rate** – Controls the speed of arpeggiation
- **Step** – Sets the number of steps in the arpeggiation pattern
- **Mode** – Sets the arpeggiation pattern
- **Wet** – Adjusts the wet signal level
- **Dry** – Adjusts the dry signal level
- **Direction (Toggle Switch)** – Sets the arpeggiation direction (Up, Alternating, Down)

All trademarks and registered trademarks are the property of their respective owners. The company, product, and service names used in this web site are for identification purposes only. Use of these names, logos, and brands does not imply endorsement.

RESISTORS (1/4W)

R1 1M
R2 100K
R3 1K
R4 22K
R5 10K
R6 1K
R7 10K
R8 100R
R9 10K
R10 10K
R11 470R
R12 100K
R13 4K7
R14 10K
R15 10K
R16 15K
R17 5K6
R18 10K
R19 22K
R20 10K
R21 10K

CAPACITORS

C1 1u MLCC
C2 1u MLCC
C3 1u MLCC
C4 1n
C5 10u
C6 2n2
C7 15p
C8 1u MLCC
C9 2n2
C10 1u ELECTROLYTIC
C11 1u MLCC
C16 100u
C17 10u
C18 47u
C19 1u MLCC

INTEGRATED CIRCUITS

IC1 TL072
IC2 24LC32A
IC3 FV1
IC4 ATTINY85
IC5 TL072
IC6 L78L33

DIODES

D1 1N5817

POTENTIOMETERS

CTRL1 (RATE) B100K
CTRL2 (STEPS) B100K
MODE B100K
WET B50K
DRY B50K

SWITCHES

Direction - SPDT On/Off/On

CRYSTALS

X1 AB38T-32.768KHZ

