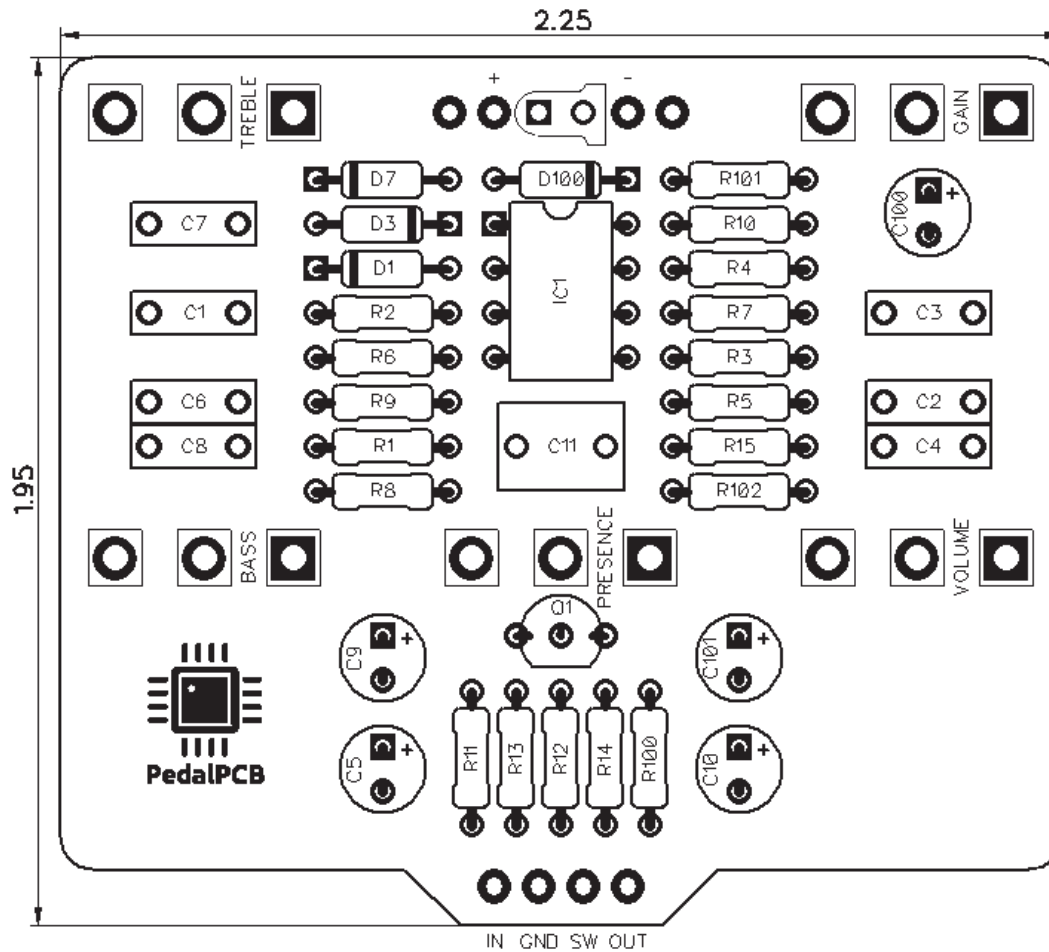


# PedalPCB

## Guardian Overdrive

Revision 08.15.20



### Controls

- Gain
- Treble
- Bass
- Presence
- Volume

All trademarks and registered trademarks are the property of their respective owners. The company, product, and service names used in this web site are for identification purposes only. Use of these names, logos, and brands does not imply endorsement.

**RESISTORS (1/4W)**

R1 1M  
R2 10K  
R3 1M  
R4 1K  
R5 10K  
R6 10K  
R7 22K  
R8 10K  
R9 10K  
R10 4K7  
R11 10K  
R12 33K  
R13 2M2  
R14 330R  
R15 150R  
R100 4K7  
R101 10K  
R102 10K

**CAPACITORS**

C1 100n  
C2 150p  
C3 47n  
C4 2n2  
C5 4u7  
C6 22n  
C7 2n2  
C8 2n2  
C9 4u7  
C10 4u7  
C11 1u  
C100 100u  
C101 47u

**INTEGRATED CIRCUITS**

IC1 OPA2134

**TRANSISTORS**

Q1 BC549C

**DIODES**

D1 1N4148  
D3 1N4148  
D7 1N4148  
D100 1N5817

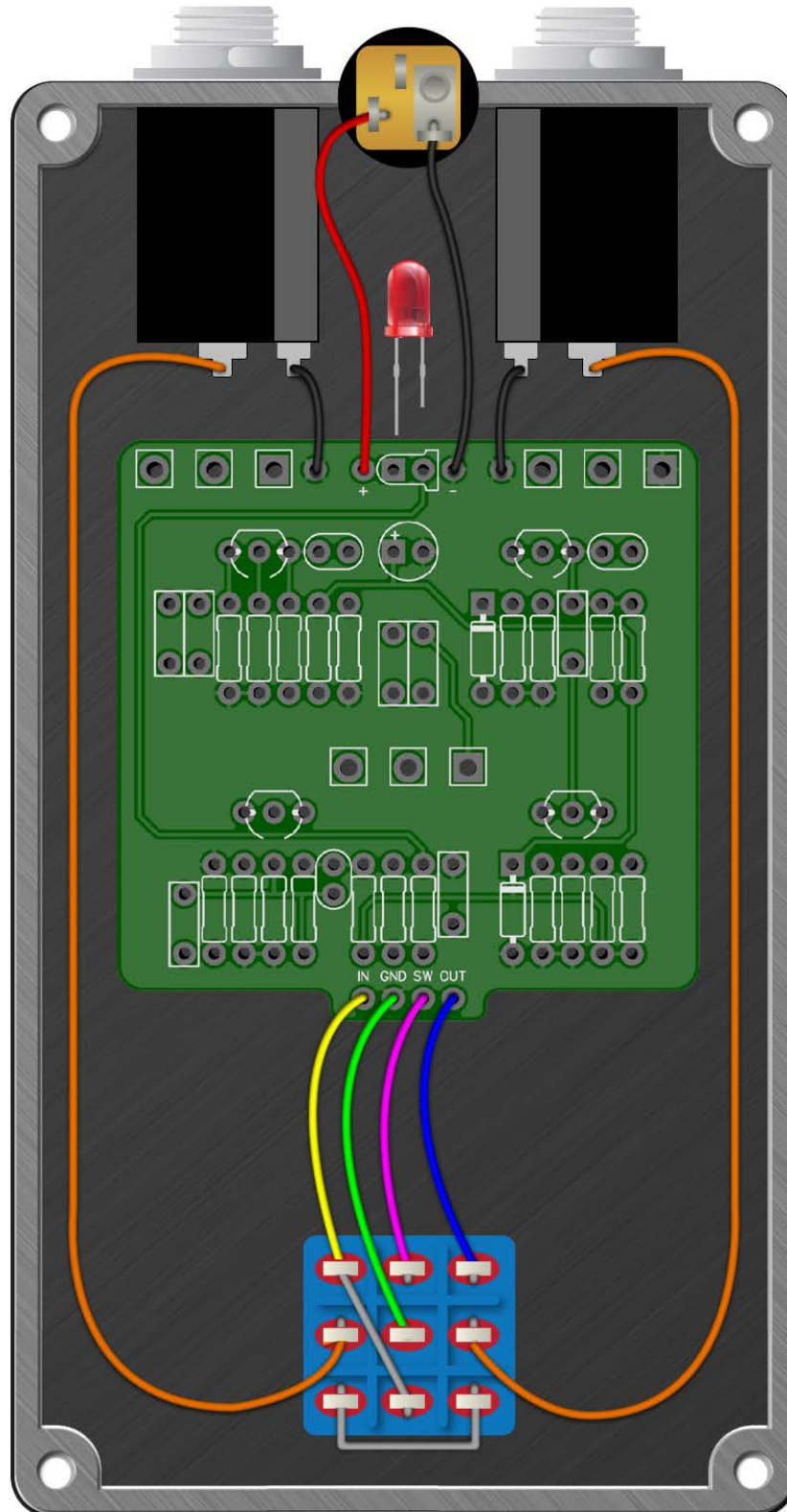
**POTENTIOMETERS**

GAIN A1M  
BASS B100K  
TREBLE B100K  
PRESENCE B25K  
VOLUME A10K



# Guardian Overdrive

Wiring Diagram



# Guardian Overdrive

Drill Template  
125B enclosure with top mounted jacks

