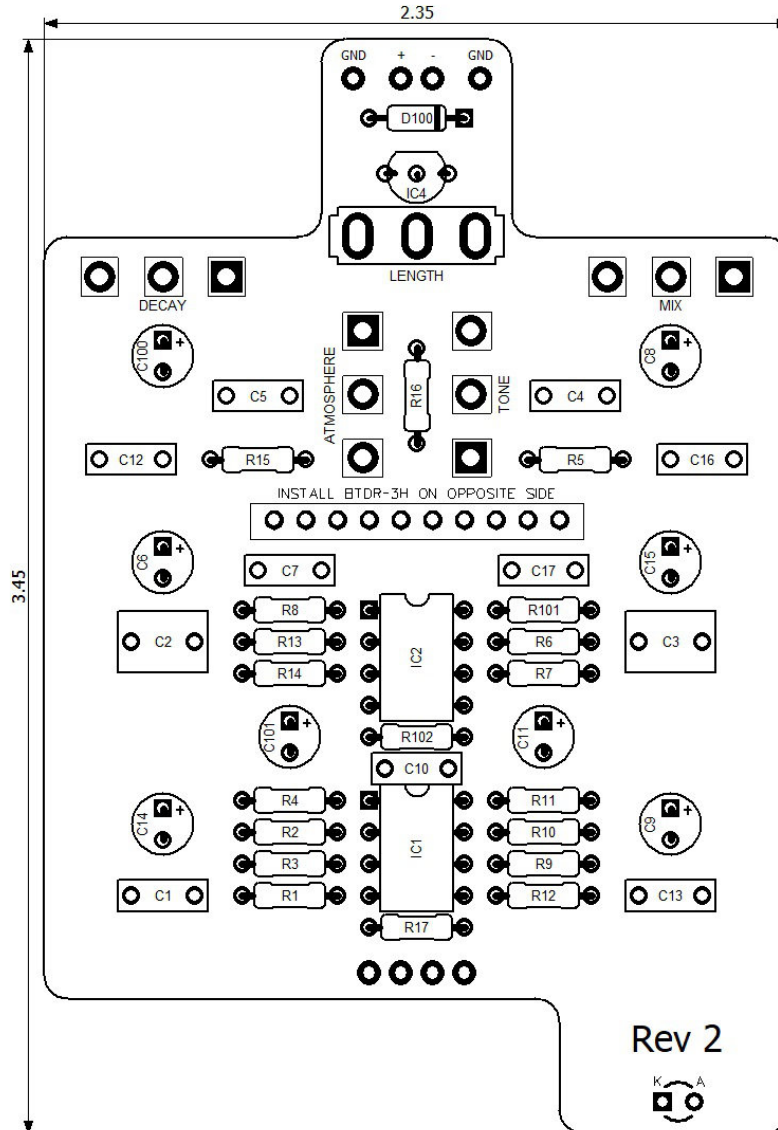


# PedalPCB

## Gravitation Reverb

Revised 1/3/22



## CONTROLS AND FEATURES

- Mix
- Decay
- Tone
- Atmosphere
- Length (Toggle switch)

All trademarks and registered trademarks are the property of their respective owners. The company, product, and service names used in this web site are for identification purposes only. Use of these names, logos, and brands does not imply endorsement.

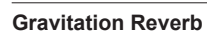
LOCATION	VALUE	TYPE	NOTES
R1	1M	Resistor, 1/4W	
R2	10K	Resistor, 1/4W	
R3	1M	Resistor, 1/4W	
R4	39K	Resistor, 1/4W	
R5	10K	Resistor, 1/4W	
R6	22K	Resistor, 1/4W	
R7	100K	Resistor, 1/4W	
R8	22K	Resistor, 1/4W	
R9	39K	Resistor, 1/4W	
R10	10K	Resistor, 1/4W	
R11	470R	Resistor, 1/4W	
R12	100K	Resistor, 1/4W	
R13	10K	Resistor, 1/4W	
R14	10K	Resistor, 1/4W	
R15	1K	Resistor, 1/4W	
R16	15K	Resistor, 1/4W	
R17	4K7	Resistor, 1/4W	
R101	47K	Resistor, 1/4W	
R102	47K	Resistor, 1/4W	
C1	100n	Film capacitor, 7.2 x 2.5mm	
C2	1u	Film capacitor, 7.2 x 5.0mm	
C3	1u	Film capacitor, 7.2 x 5.0mm	
C4	10n	Film capacitor, 7.2 x 2.5mm	
C5	1n	Film capacitor, 7.2 x 2.5mm	
C6	1u	Electrolytic capacitor, 5mm	
C7	1n	Film capacitor, 7.2 x 2.5mm	
C8	1u	Electrolytic capacitor, 5mm	
C9	1u	Electrolytic capacitor, 5mm	
C10	100p	Ceramic capacitor	
C11	1u	Electrolytic capacitor, 5mm	
C12	100n	Film capacitor, 7.2 x 2.5mm	
C13	100n	Film capacitor, 7.2 x 2.5mm	
C14	100u	Electrolytic capacitor, 5mm	
C15	100u	Electrolytic capacitor, 5mm	
C16	100n	Film capacitor, 7.2 x 2.5mm	
C17	100n	Film capacitor, 7.2 x 2.5mm	
C100	100u	Electrolytic capacitor, 5mm	
C101	10u	Electrolytic capacitor, 5mm	
D100	1N5817	Schottky diode, DO-41	
MIX	B10K	16mm right-angle PCB mount pot	10K, Linear taper
DECAY	B25K	16mm right-angle PCB mount pot	25K, Linear taper
TONE	B25K	16mm right-angle PCB mount pot	25K, Linear taper
ATMOSPHERE	B50K	16mm right-angle PCB mount pot	50K, Linear taper
		Continued on next page...	

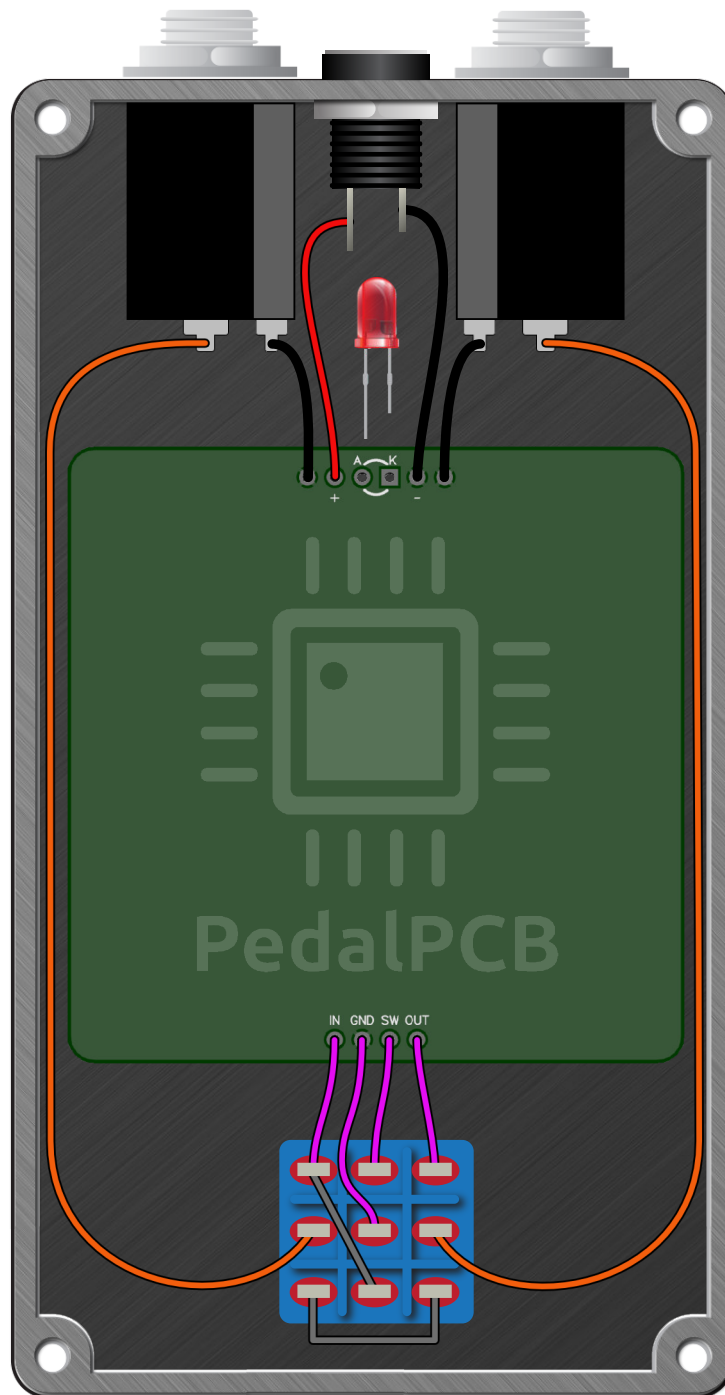


# Gravitation Reverb

## Parts List (Page 2 of 2)

[illegible]





# Gravitation Reverb

Drill Template  
125B Enclosure

