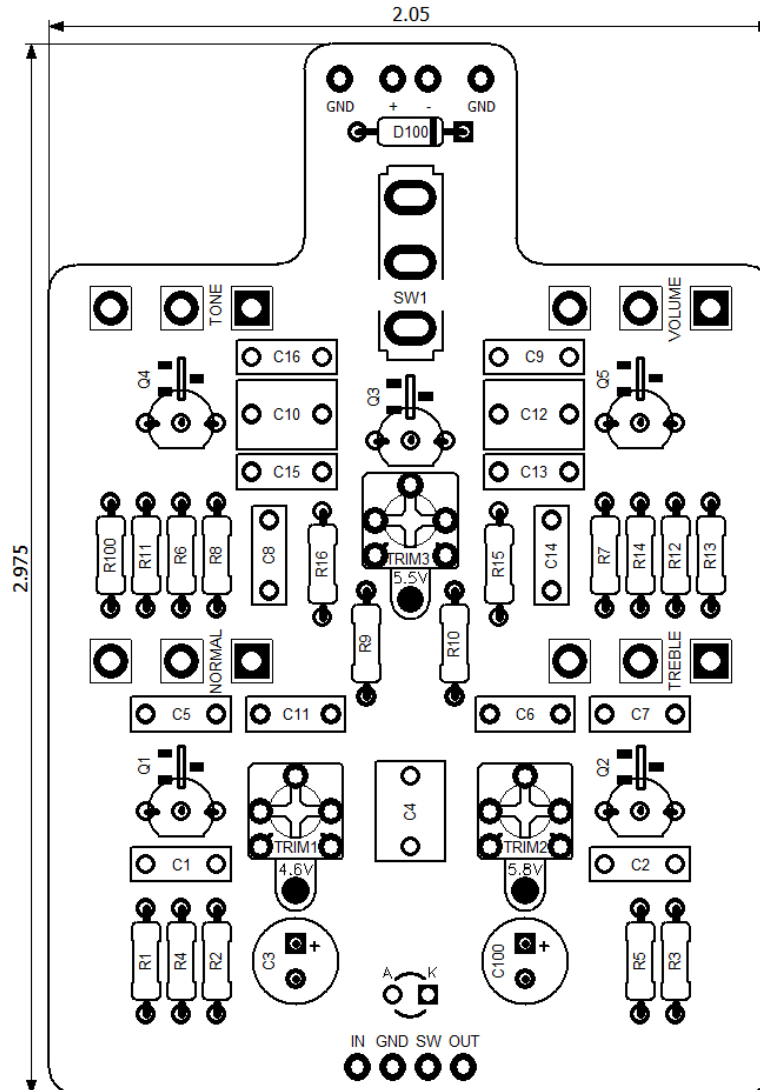


# PedalPCB

## Golden Falk Overdrive

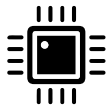
Revised 3/26/22



### CONTROLS AND FEATURES

- Volume
- Tone
- Treble Channel
- Normal Channel
- Mode (Toggle switch)

All trademarks and registered trademarks are the property of their respective owners. The company, product, and service names used in this web site are for identification purposes only. Use of these names, logos, and brands does not imply endorsement.

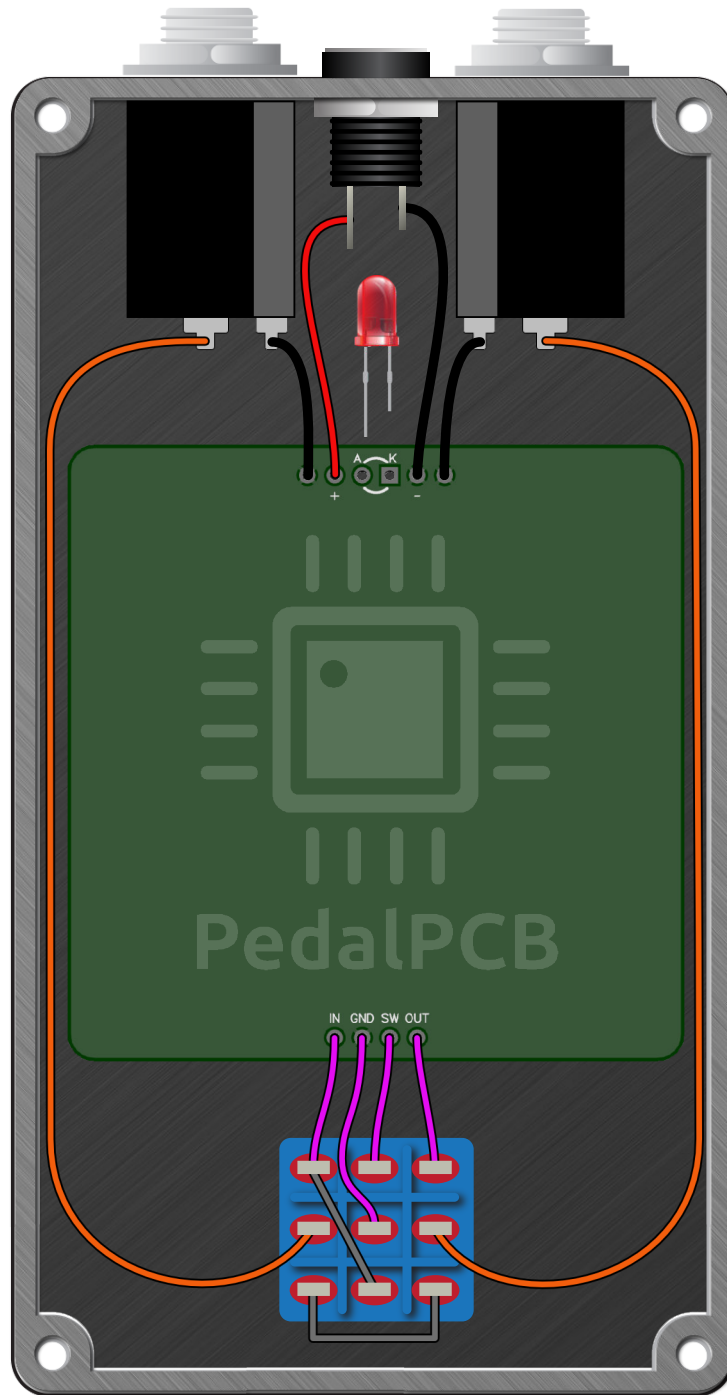


LOCATION	VALUE	TYPE	NOTES
R1	1M	Resistor, 1/4W	
R2	33K	Resistor, 1/4W	
R3	33K	Resistor, 1/4W	
R4	820R	Resistor, 1/4W	
R5	2K7	Resistor, 1/4W	
R6	470K	Resistor, 1/4W	
R7	470K	Resistor, 1/4W	
R8	1M	Resistor, 1/4W	
R9	1M	Resistor, 1/4W	
R10	1M	Resistor, 1/4W	
R11	1K	Resistor, 1/4W	
R12	100K	Resistor, 1/4W	
R13	100K	Resistor, 1/4W	
R14	1K	Resistor, 1/4W	
R15	15K	Resistor, 1/4W	
R16	15K	Resistor, 1/4W	
R100	4K7	Resistor, 1/4W	
			<b>Alternate Part</b>
C1	330p	Ceramic disc capacitor	
C2	330p	Ceramic disc capacitor	
C3	100u	Electrolytic capacitor, 5mm	
C4	470n	Ceramic disc capacitor	Film capacitor, 7.2 x 5.0mm
C5	22n	Ceramic disc capacitor	Film capacitor, 7.2 x 2.5mm
C6	2n2	Ceramic disc capacitor	Film capacitor, 7.2 x 2.5mm
C7	330p	Ceramic disc capacitor	
C8	470p	Ceramic disc capacitor	
C9	1n	Ceramic disc capacitor	Film capacitor, 7.2 x 2.5mm
C10	1u	Ceramic disc capacitor	Film capacitor, 7.2 x 5.0mm
C11	100n	Ceramic disc capacitor	Film capacitor, 7.2 x 2.5mm
C12	330p	Ceramic disc capacitor	
C13	100n	Ceramic disc capacitor	Film capacitor, 7.2 x 2.5mm
C14	2n2	Ceramic disc capacitor	Film capacitor, 7.2 x 2.5mm
C15	2n2	Ceramic disc capacitor	Film capacitor, 7.2 x 2.5mm
C16	22n	Ceramic disc capacitor	Film capacitor, 7.2 x 2.5mm
C100	100u	Electrolytic capacitor, 5mm	
D100	1N5817	Schottky diode, DO-41	
Q1-Q5	J201	JFET transistor, N-channel	
TRIM1-TRIM3	50K	Trimmer potentiometer, 3362P type	
VOLUME	A100K	16mm right-angle PCB mount pot	
TONE	A50K	16mm right-angle PCB mount pot	
TREBLE	A1M	16mm right-angle PCB mount pot	
NORMAL	A1M	16mm right-angle PCB mount pot	
SW1	SPDT	Toggle switch, SPDT	3-position (ON/OFF/ON)



# Golden Falk Overdrive

Wiring Diagram



# Golden Falk Overdrive

Drill Template  
125B Enclosure

