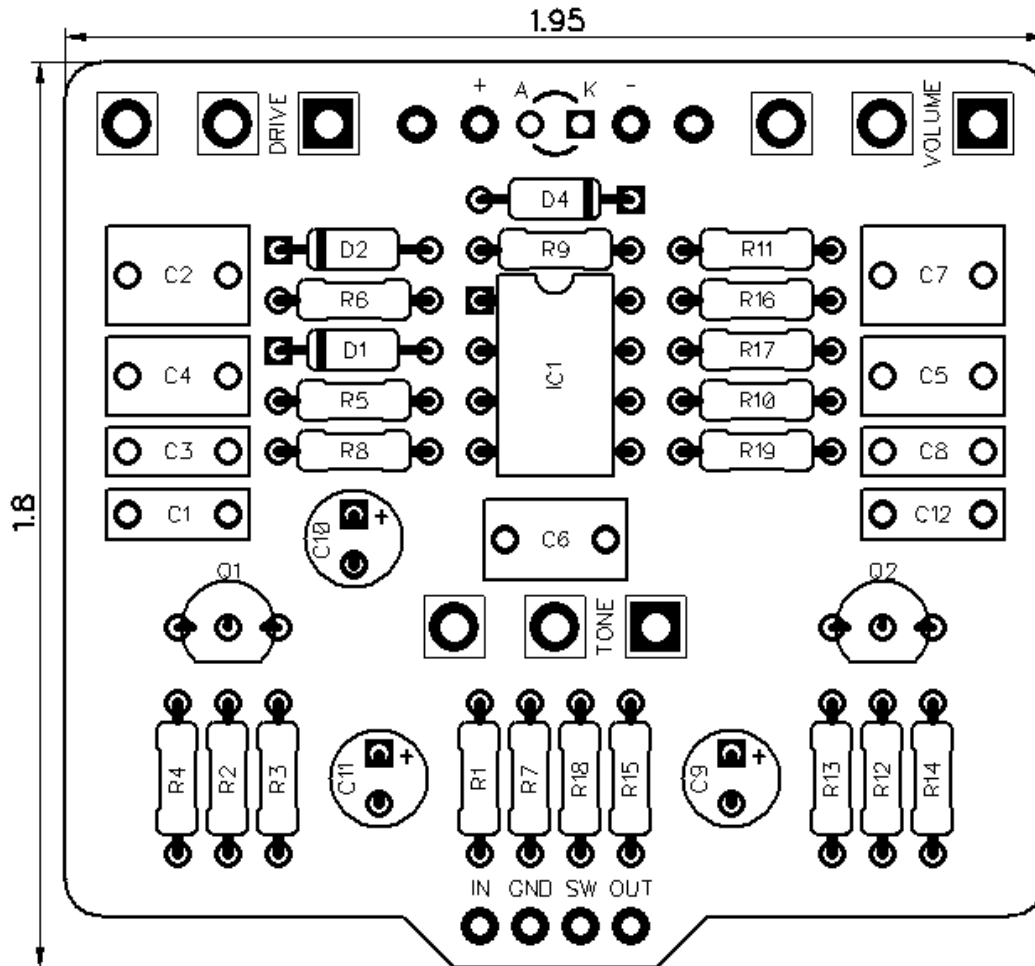




PedalPCB

Glue Factory Overdrive

Revision 11.28.20



Controls

- Volume
- Tone
- Drive

All trademarks and registered trademarks are the property of their respective owners. The company, product, and service names used in this web site are for identification purposes only. Use of these names, logos, and brands does not imply endorsement.

RESISTORS (1/4W)

R1 1M
R2 1K
R3 510K
R4 10K
R5 10K
R6 10K
R7 220R
R8 1K
R9 1K
R10 1K
R11 1K
R12 510K
R13 10K
R14 100R
R15 10K
R16 10K
R17 10K
R18 4K7
R19 10K

CAPACITORS

C1 27n
C2 1u
C3 51p
C4 220n
C5 220n
C6 220n
C7 1u
C8 100n
C9 10u
C10 47u
C11 47u
C12 100n

TRANSISTORS

Q1 2N3904
Q2 2N3904

INTEGRATED CIRCUITS

IC1 JRC4558

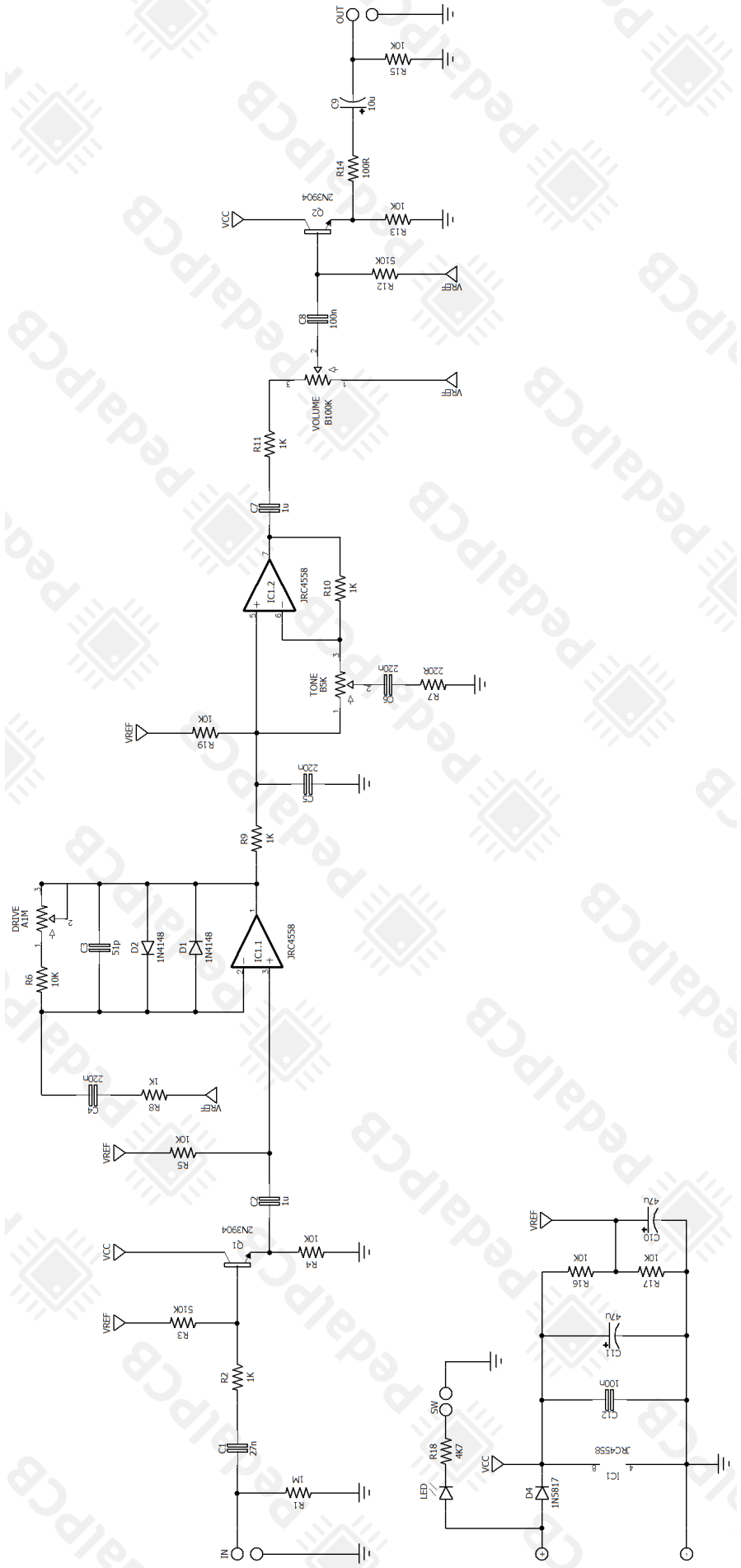
DIODES

D1 1N4148
D2 1N4148
D4 1N5817

POTENTIOMETERS

VOLUME B100K
TONE B5K
DRIVE A1M

Glue Factory Overdrive



Glue Factory Overdrive

Wiring Diagram

