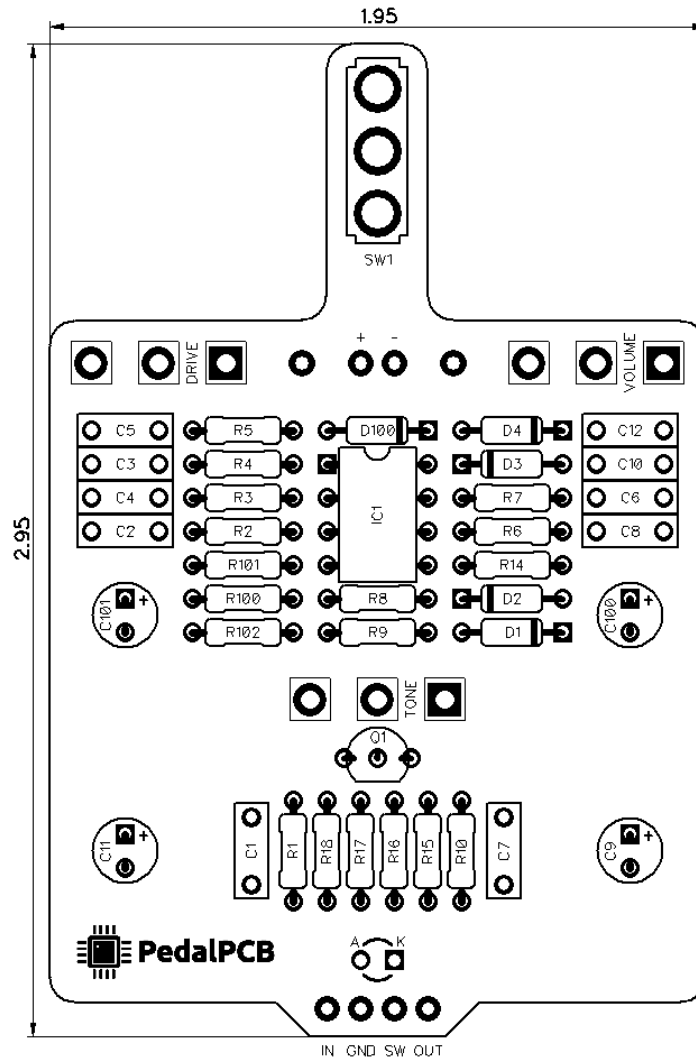




PedalPCB

Glory Hole Overdrive

Revision 12.28.19



Controls

- Volume
- Tone
- Drive
- Hi-Cut (Toggle Switch)

All trademarks and registered trademarks are the property of their respective owners. The company, product, and service names used in this web site are for identification purposes only. Use of these names, logos, and brands does not imply endorsement.

RESISTORS (1/4W)

R1 2M2
R2 1M
R3 4K7
R4 3K3
R5 10K
R6 6K8
R7 220K
R8 1K
R9 6K8
R10 68K
R14 100K
R15 1M
R16 12K
R17 12K
R18 22K
R100 47K
R101 47K
R102 4K7

CAPACITORS

C1 47n
C2 47p
C3 10n
C4 10n
C5 100n
C6 10n
C7 100n
C8 10n
C9 2u2
C10 470p
C11 10u
C12 100n
C100 100u
C101 100u

INTEGRATED CIRCUITS

IC1 LM833N

TRANSISTORS

Q1 2N5457

DIODES

D1 1N914
D2 1N914
D3 1N914
D4 1N914
D100 1N5817

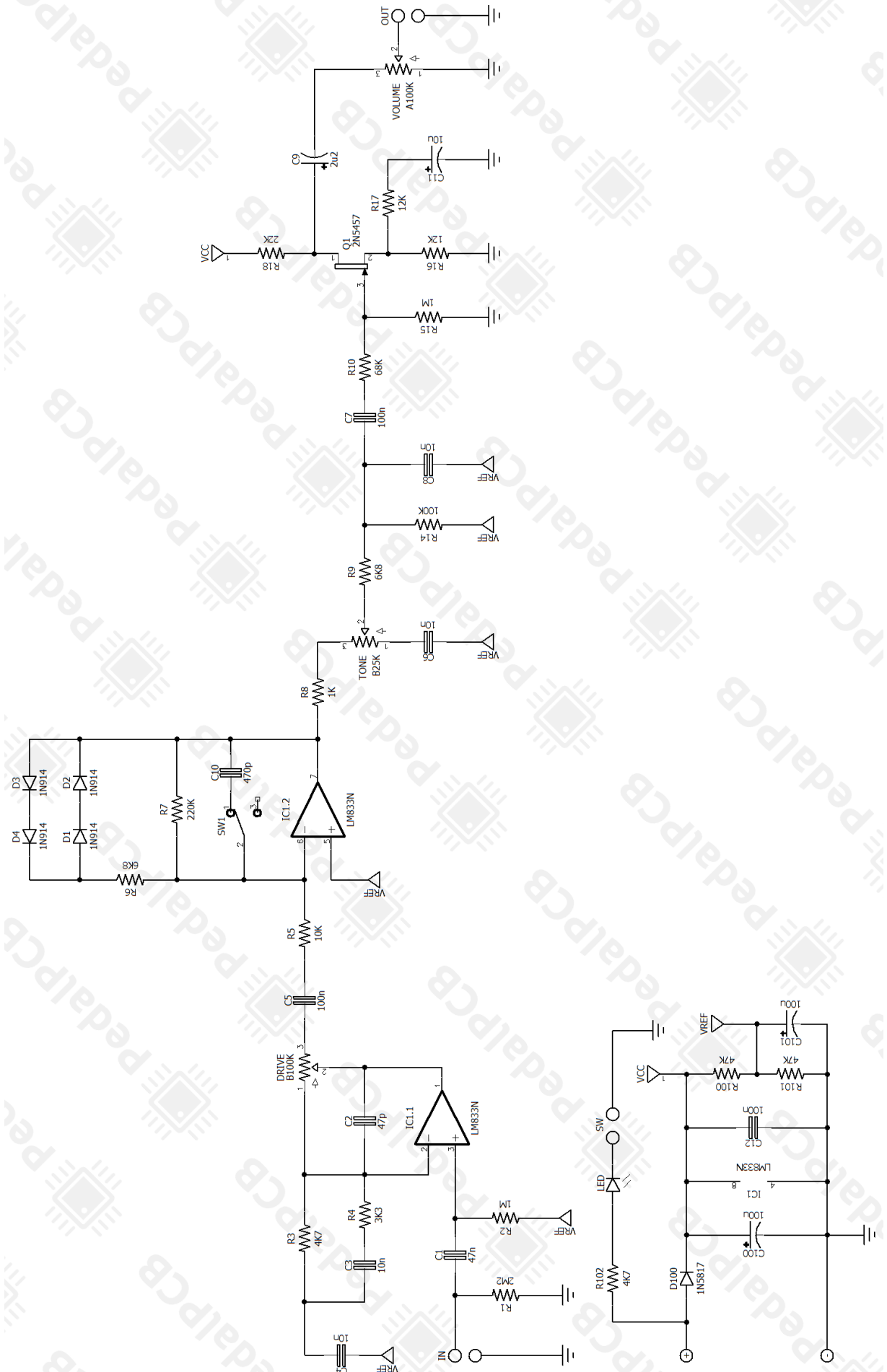
POTENTIOMETERS

VOLUME A100K
TONE B25K
DRIVE B100K

SWITCHES

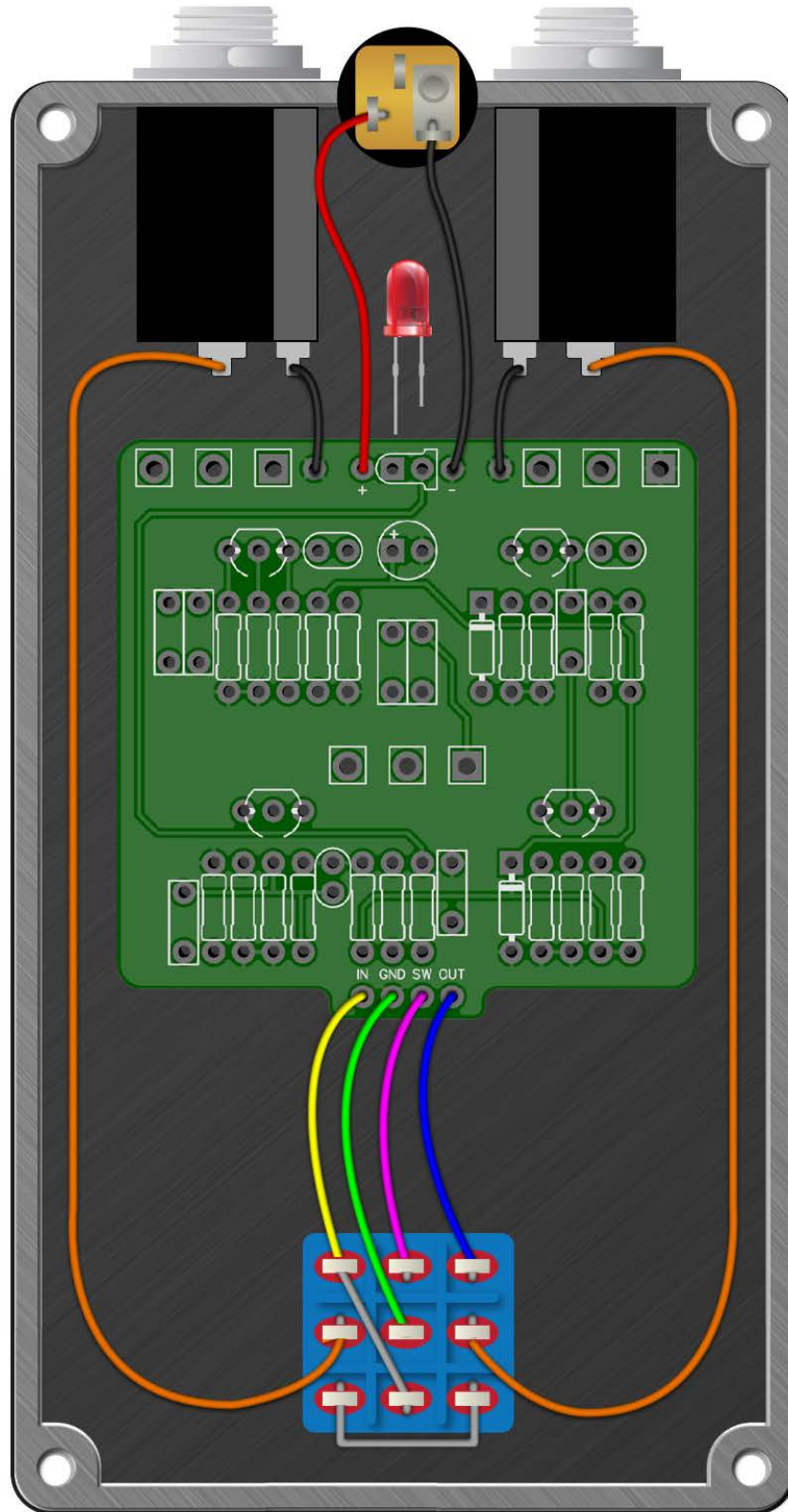
SW1 SPDT On/On

Glory Hole Overdrive



Glory Hole Overdrive

Wiring Diagram



Glory Hole Overdrive

Drill Template
125B Enclosure

