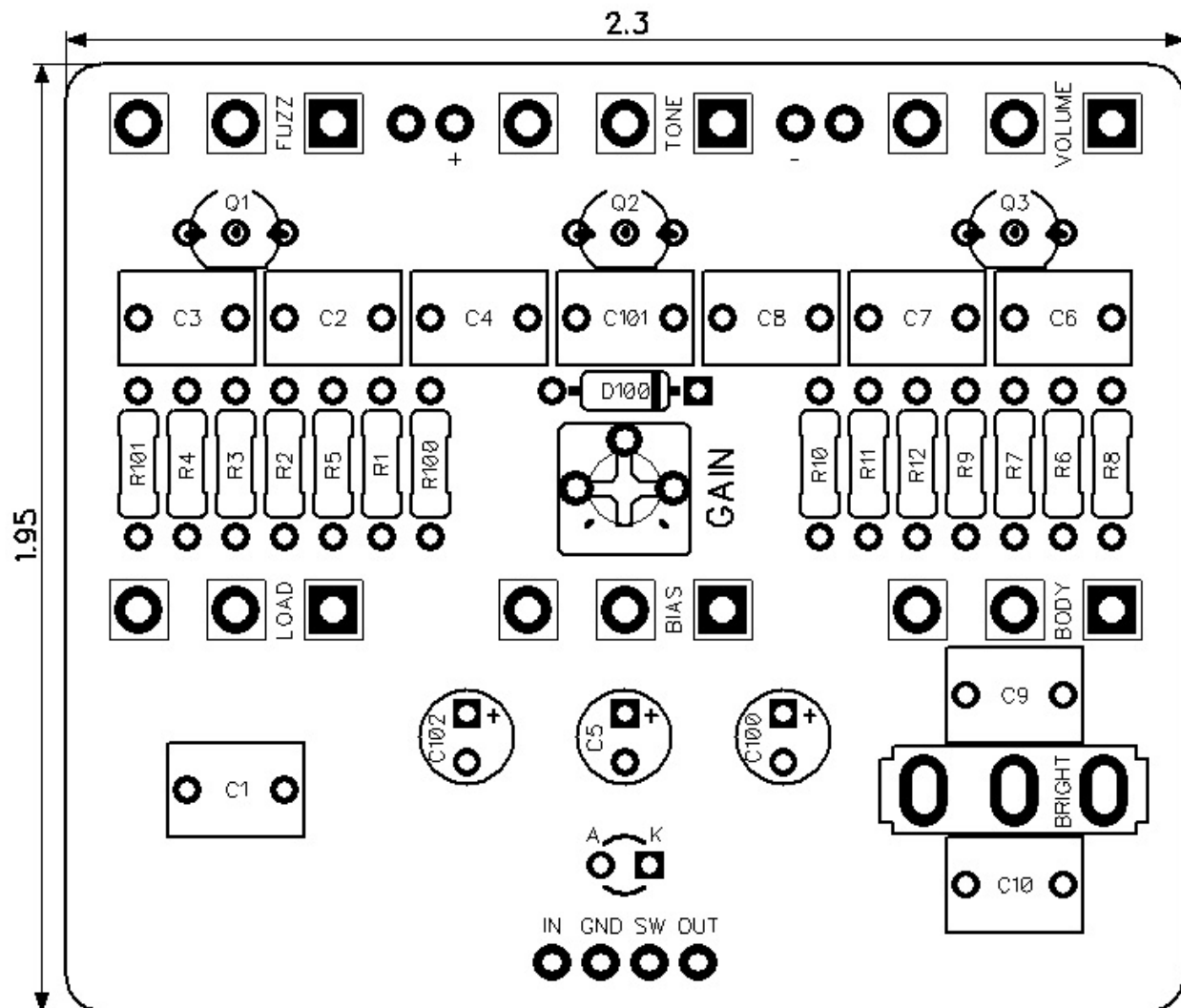




Fuzz Captain

Revised 6/30/21

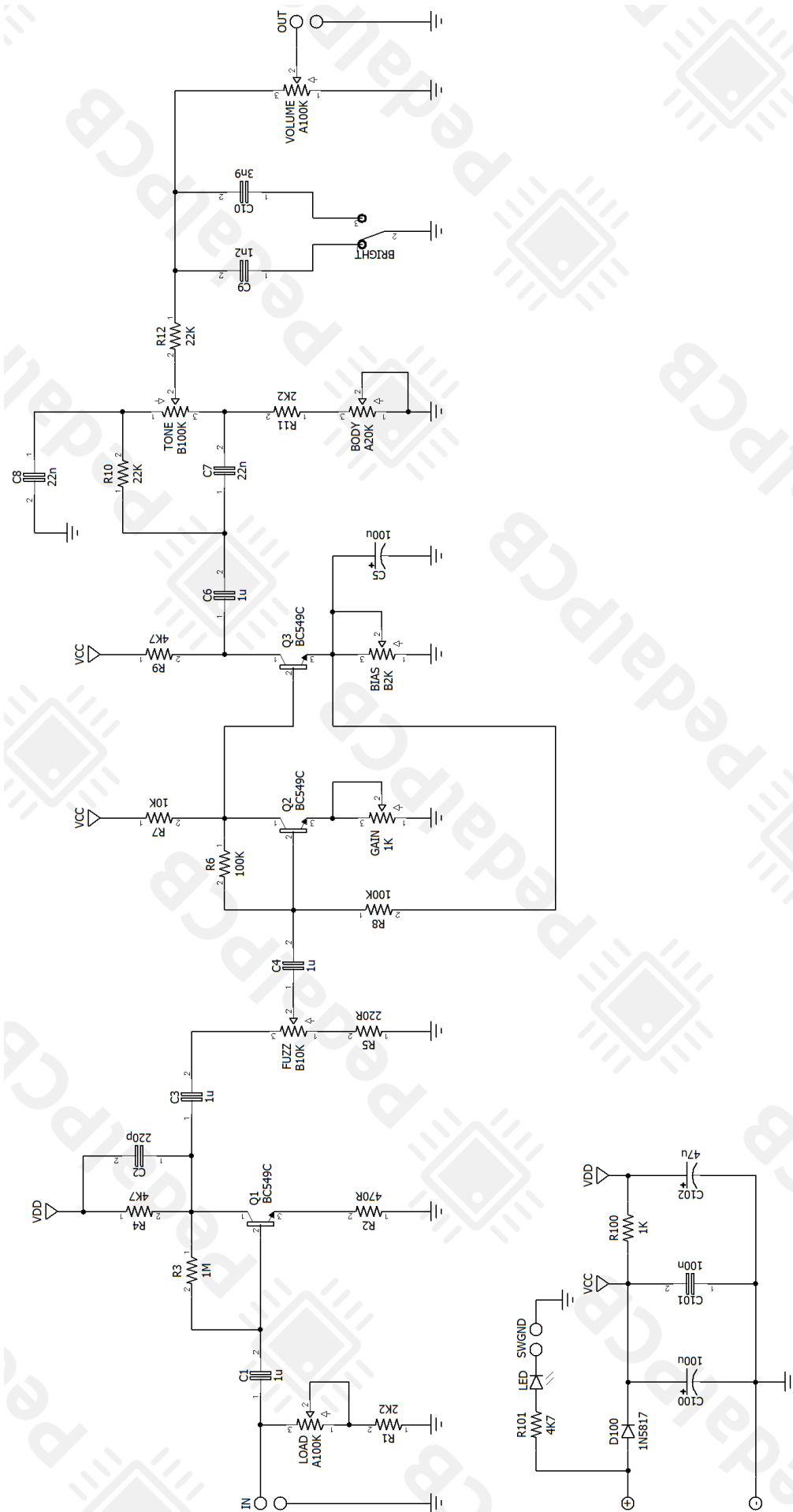


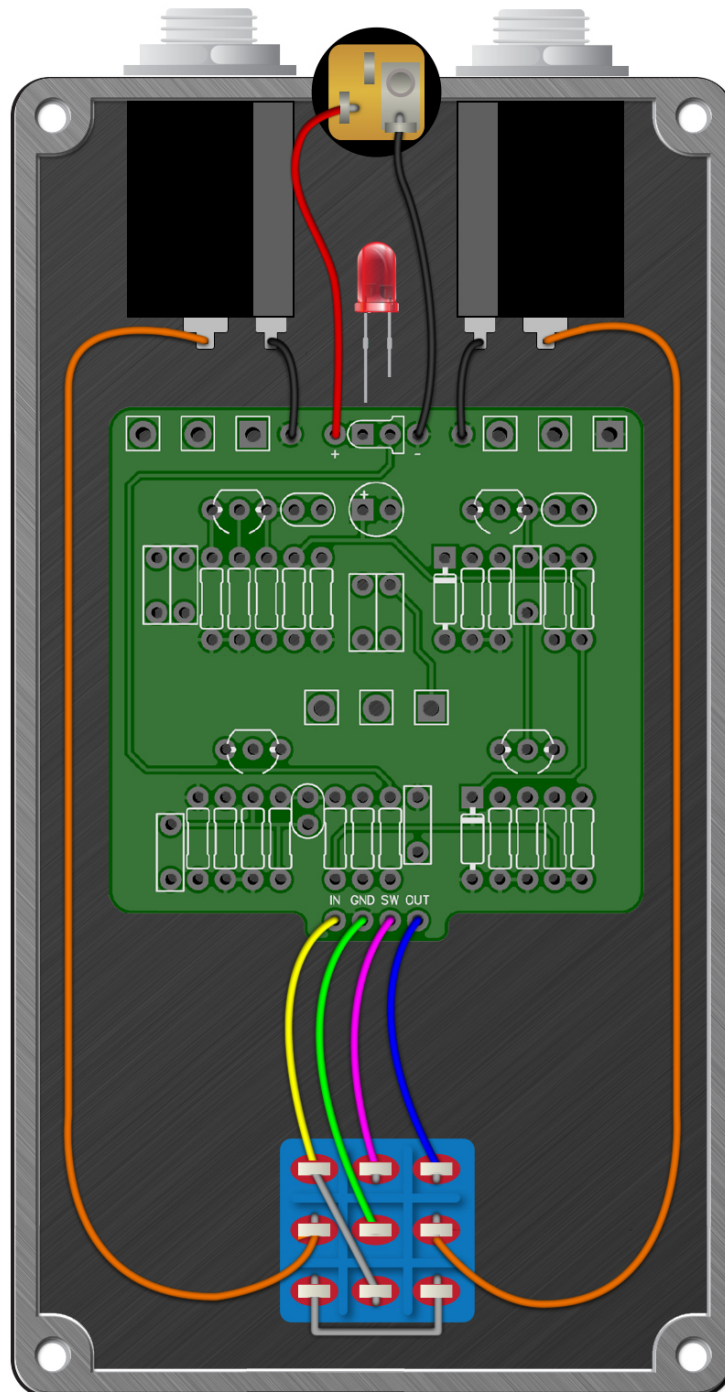
CONTROLS AND FEATURES

- Volume
- Tone
- Fuzz
- Body
- Bias
- Load
- Gain (Internal trim pot)
- Bright (Toggle switch)

All trademarks and registered trademarks are the property of their respective owners. The company, product, and service names used in this web site are for identification purposes only. Use of these names, logos, and brands does not imply endorsement.

LOCATION	VALUE	TYPE	NOTES
R1	2K2	Resistor, 1/4W	
R2	470R	Resistor, 1/4W	
R3	1M	Resistor, 1/4W	
R4	4K7	Resistor, 1/4W	
R5	220R	Resistor, 1/4W	
R6	100K	Resistor, 1/4W	
R7	10K	Resistor, 1/4W	
R8	100K	Resistor, 1/4W	
R9	4K7	Resistor, 1/4W	
R10	22K	Resistor, 1/4W	
R11	2K2	Resistor, 1/4W	
R12	22K	Resistor, 1/4W	
R100	1K	Resistor, 1/4W	
R101	4K7	Resistor, 1/4W	
C1	1u	Film capacitor, 7.2 x 5.0mm	
C2	220p	Ceramic capacitor	
C3	1u	Film capacitor, 7.2 x 5.0mm	
C4	1u	Film capacitor, 7.2 x 5.0mm	
C5	100u	Electrolytic capacitor, 5mm	
C6	1u	Film capacitor, 7.2 x 5.0mm	
C7	22n	Film capacitor, 7.2 x 2.5mm	
C8	22n	Film capacitor, 7.2 x 2.5mm	
C9	1n2	Film capacitor, 7.2 x 2.5mm	
C10	3n9	Film capacitor, 7.2 x 2.5mm	
C100	100u	Electrolytic capacitor, 5mm	
C101	100n	Film capacitor, 7.2 x 2.5mm	
C102	47u	Electrolytic capacitor, 5mm	
D100	1N5817	Schottky diode, DO-41	
Q1	BC549C	BJT transistor, NPN TO-92	
Q2	BC549C	BJT transistor, NPN TO-92	
Q3	BC549C	BJT transistor, NPN TO-92	
VOLUME	A100K	16mm right-angle PCB mount pot	
TONE	B100K	16mm right-angle PCB mount pot	
FUZZ	B10K	16mm right-angle PCB mount pot	
BODY	A20K	16mm right-angle PCB mount pot	
BIAS	B2K	16mm right-angle PCB mount pot	
LOAD	A100K	16mm right-angle PCB mount pot	
GAIN	1K	Trim potentiometer (3362P-type)	
BRIGHT	SPDT	Toggle switch, SPDT	3-position (ON/OFF/ON)





Fuzz Captain

Drill Template
125B Enclosure

