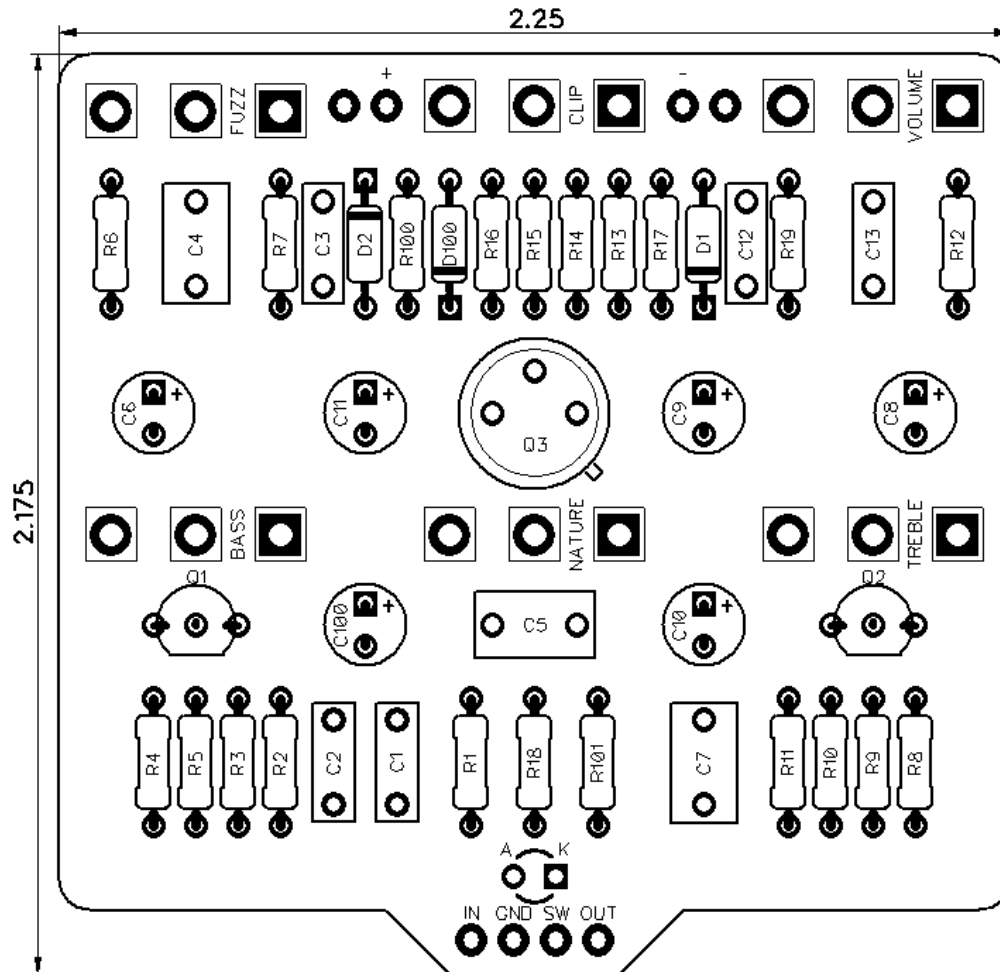




PedalPCB

Fuchsia Fuzz

Revision 11.08.19



Controls

- Volume
- Fuzz
- Clip
- Nature*
- Treble*
- Bass*

* Board is designed to use either Nature, or Treble + Bass controls

RESISTORS (1/4W)

R1	1M
R2	14K7
R3	1M
R4	14K7
R5	14K7
R6	14K7
R7	470R
R8	10K
R9	150K
R10	10K
R11	220K
R12	330R
R13	1K
R14	1K
R15	22K
R16	6K8
R17	150K
R18	330R
R19	10K
R100	1K
R101	4K7

CAPACITORS

C1	47n
C2	100p
C3	4n7
C4	470n
C5	470n
C6	22u
C7	470n
C8	22u
C9	22u
C10	22u
C11	22u
C12	470p
C13	22n
C100	100u

TRANSISTORS

Q1	MPF4393
Q2	BC550C
Q3	2N1308

DIODES

D1	1N4007
D2	1N4007
D100	1N5817

POTENTIOMETERS

VOLUME	A50K
FUZZ	A50K
CLIP	C10K
TREBLE*	A25K
BASS*	C10K
NATURE*	W20K

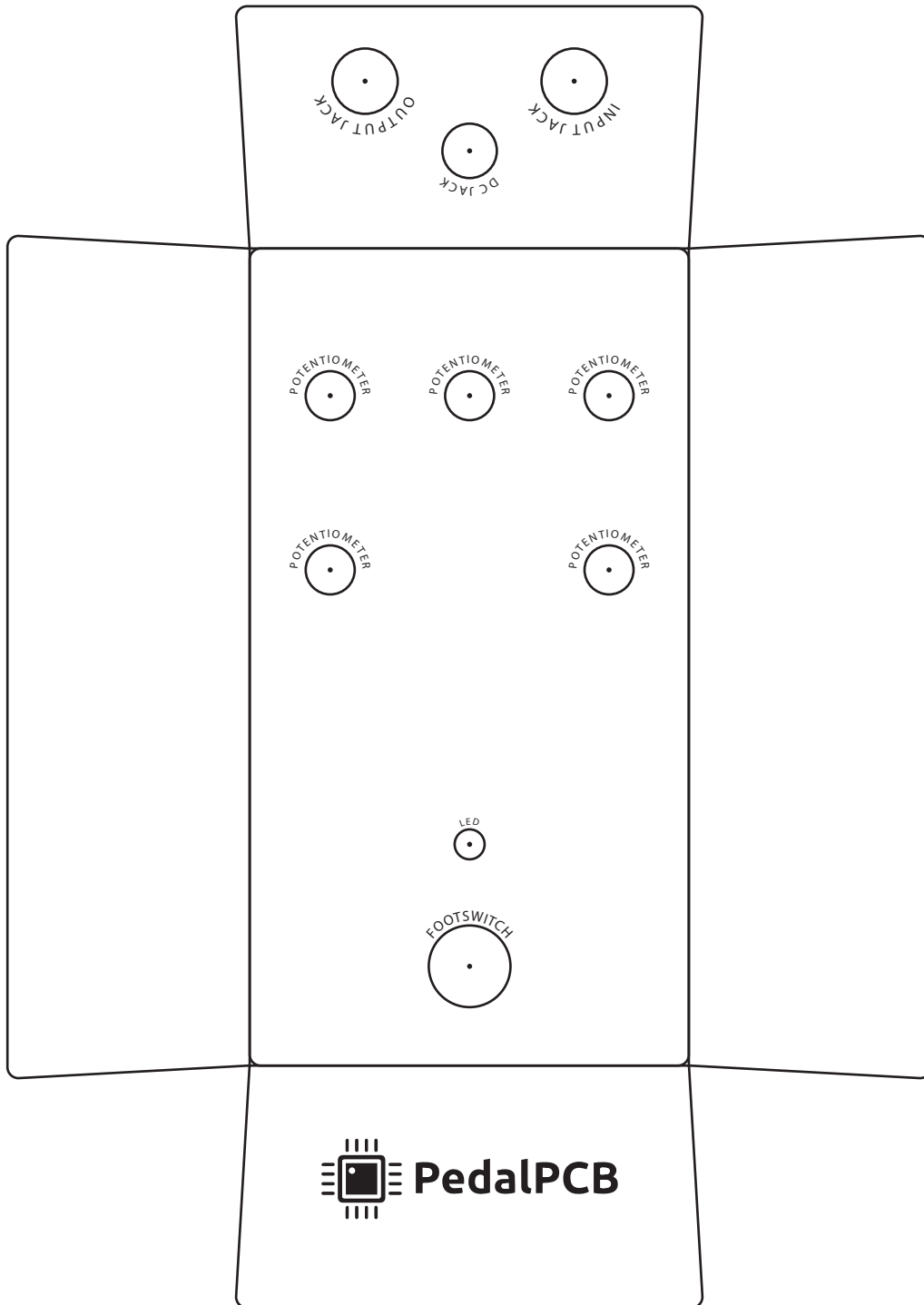
NOTE: PCB is designed for either Nature control, or Treble + Bass controls, do not install all three.

Fuchsia Fuzz

Wiring Diagram



Treble + Bass Control Option



Nature Control Option

