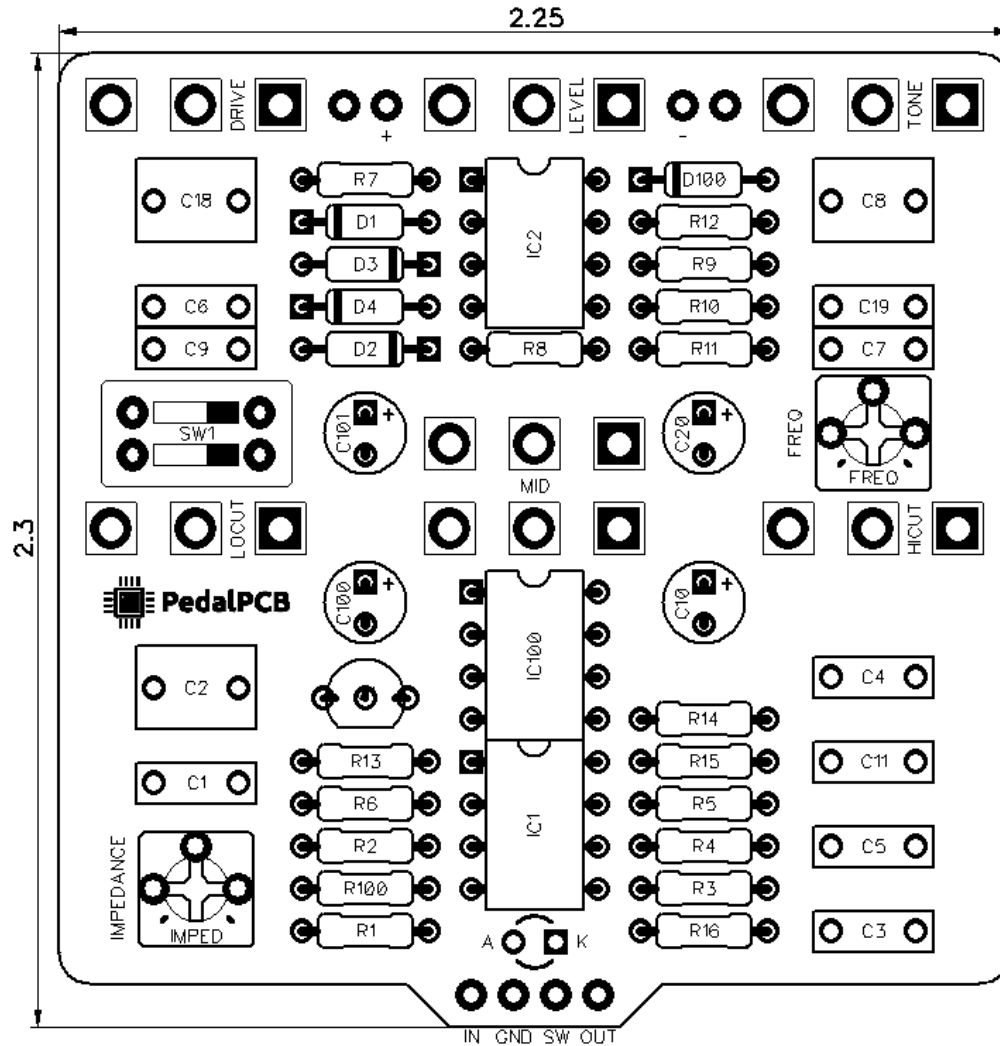




PedalPCB

Frost Drive

Revision 06.24.20



Controls

- Drive
- Level
- Tone
- Lo-cut
- Mid
- Hi-cut
- Impedance (trim pot)
- Frequency (trim pot)

All trademarks and registered trademarks are the property of their respective owners. The company, product, and service names used in this web site are for identification purposes only. Use of these names, logos, and brands does not imply endorsement.

RESISTORS (1/4W)

R1 1K
 R2 100K
 R3 100K
 R4 1K*
 R5 1K*
 R6 LOW*
 R7 MIN*
 R8 MAX*
 R9 VOL*
 R10 100K
 R11 100Ω
 R12 1K
 R13 470K
 R14 10K
 R15 10K
 R16 100Ω
 R100 4K7

CAPACITORS

C1 220n
 C2 1u
 C3 47n*
 C4 120n*
 C5 220n
 C6 33p
 C7 220n
 C8 1u
 C9 100n
 C10 22u
 C11 100n
 C18 MAX*
 C19 HI*
 C20 100u
 C100 10u
 C101 47u

TRANSISTORS

Q1 MPSA18

INTEGRATED CIRCUITS

IC1 JRC4558
 IC2 JRC4558
 IC100 TC1044SCPA

DIODES

D1 1N914
 D2 1N914
 D3 1N914
 D4 1N914
 D100 1N5817

POTENTIOMETERS

LEVEL A100K
 LOCUT C10K
 MID C10K DUAL*
 TONE W20K
 DRIVE D1M
 HICUT C10K

TRIM POTS

FREQ 500R TRIM
 IMPED 1M TRIM

DIP SWITCHES

SW1 DIP2 Dip Switch

IMPORTANT NOTE

Dual C10K reverse-audio potentiometers with right-angle PCB mount pins are rare and can be hard to source. As an alternative, a Dual C100K potentiometer can be used. The values of R4, R5, C3, and C4 must be scaled accordingly.

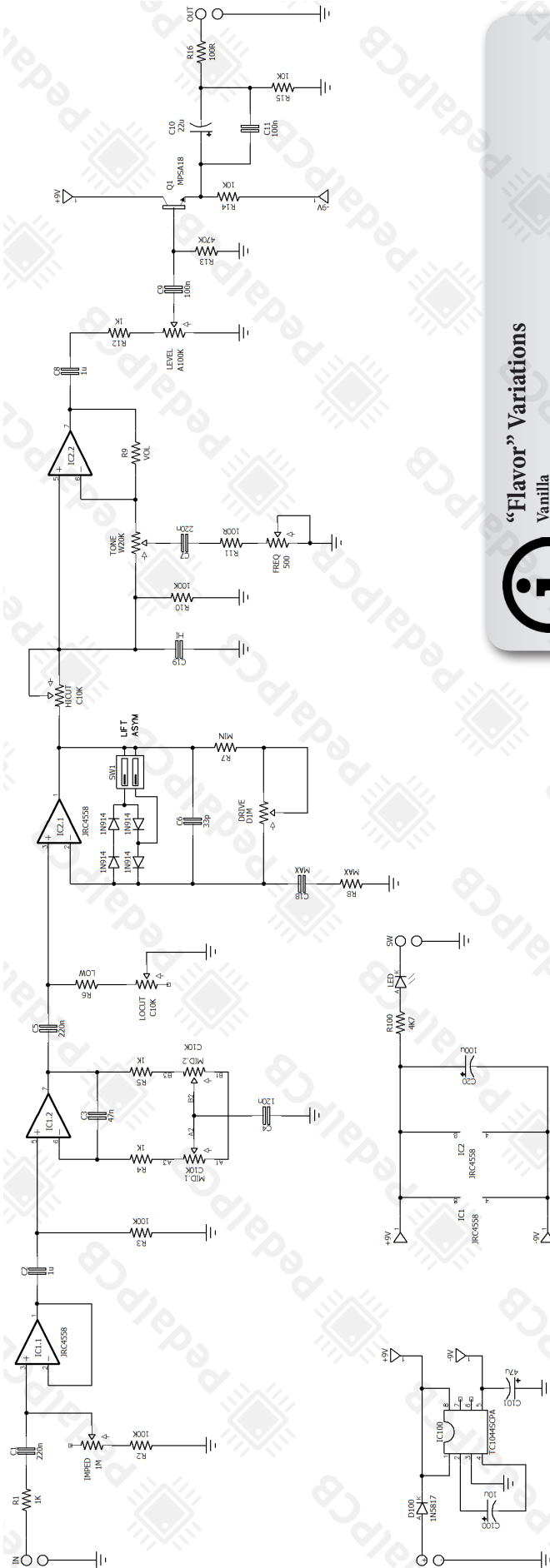
MID	C10K Dual
R4	1K
R5	1K
C3	47n
C4	120n

MID	C100K Dual
R4	10K
R5	10K
C3	4n7
C4	12n

Small Bear Electronics - Dual C100K Right-Angle PCB Mounted Potentiometer

<http://smallbear-electronics.mybigcommerce.com/alpha-dual-gang-16mm-pc-mount/>

Frost Drive



“Flavor” Variations

Vanilla
Resistors
Capacitors

LOW = 1K, VOL = 4.7K, MIN = 10K, MAX = 10K
MAX = 0.1uF, HI = 47nF

Mint
Resistors
Capacitors

LOW = 1K, VOL = 2.2K, MIN = 4.7K, MAX = 4.7K
MAX = 0.22uF, HI = 47nF

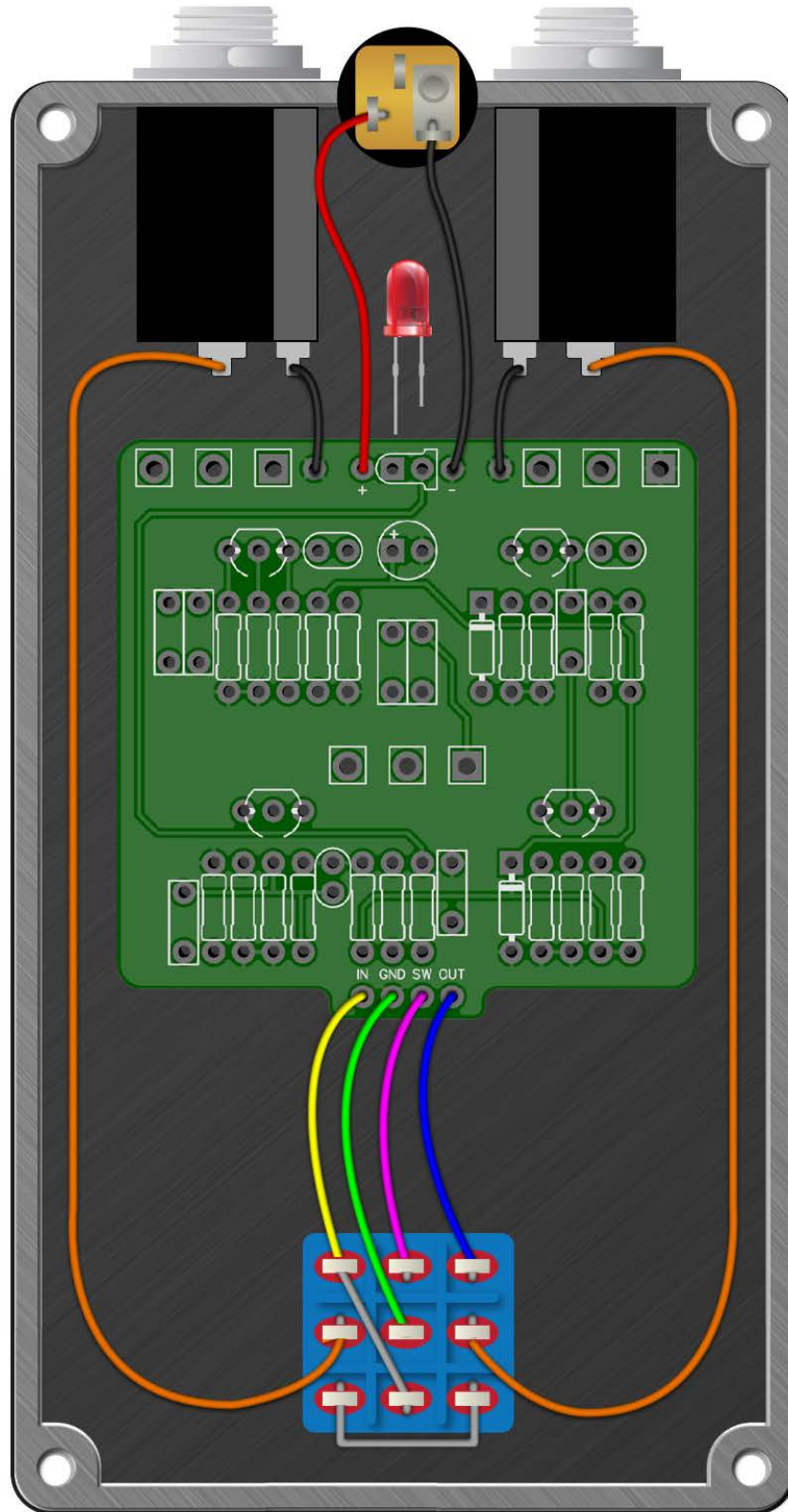
Sherbet
Resistors
Capacitors

LOW = 470, VOL = 1K, MIN = 2.2K, MAX = 2.2K
MAX = 0.47uF, HI = 0.1uF



Frost Drive

Wiring Diagram



Frost Drive

Drill Template
125B enclosure with top mounted jacks

