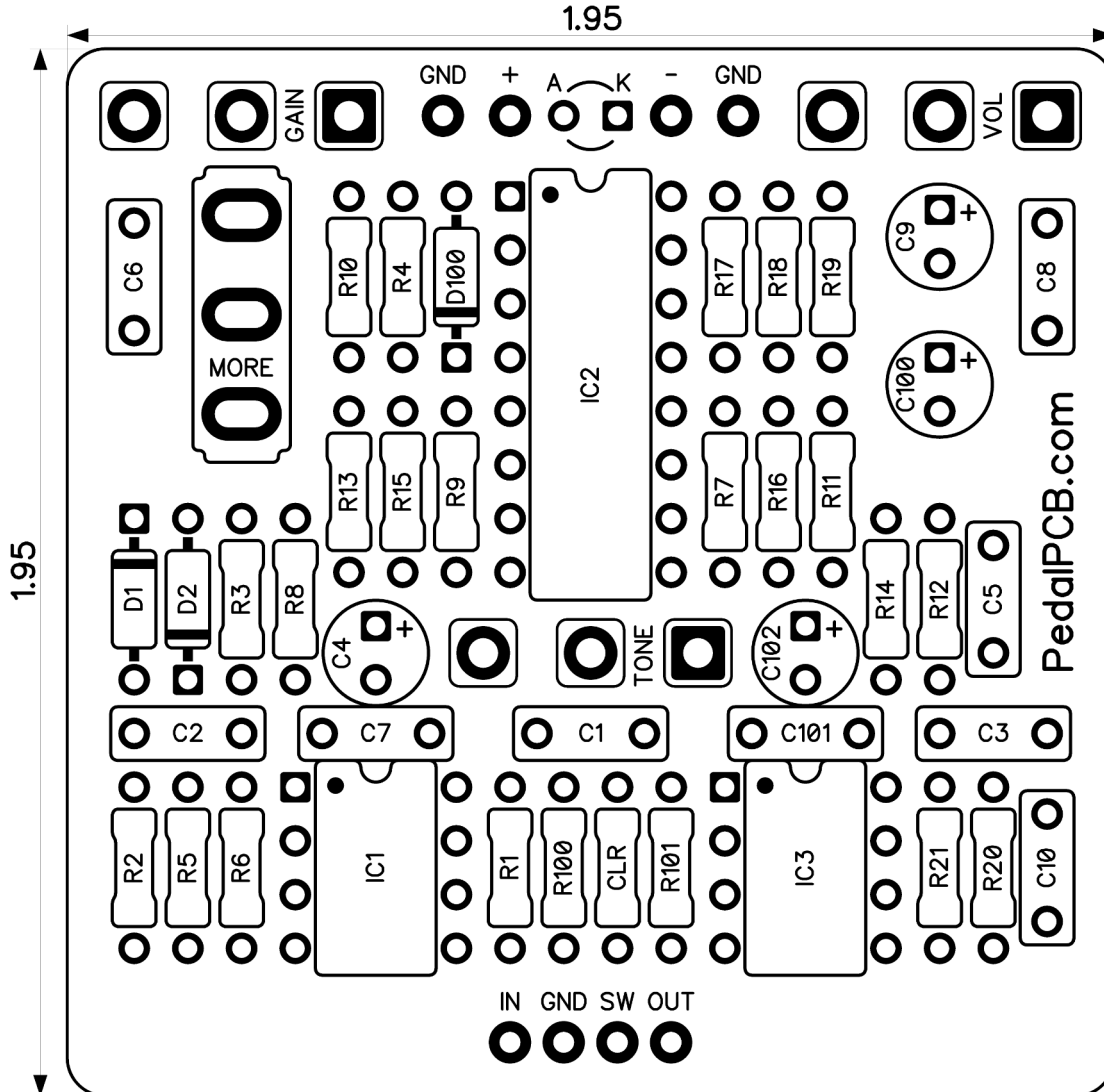


PedalPCB

Fat Piggy Overdrive

Revised 10/28/22



CONTROLS AND FEATURES

- Volume
- Gain
- Tone
- More Gain (Toggle switch)

All trademarks and registered trademarks are the property of their respective owners. The company, product, and service names used in this web site are for identification purposes only. Use of these names, logos, and brands does not imply endorsement.

LOCATION	VALUE	TYPE	NOTES
R1	10M	Resistor, 1/4W	
R2	10K	Resistor, 1/4W	
R3	1M	Resistor, 1/4W	
R4	2M2	Resistor, 1/4W	
R5	100K	Resistor, 1/4W	
R6	680K	Resistor, 1/4W	
R7	2M2	Resistor, 1/4W	
R8	16K	Resistor, 1/4W	
R9	130K	Resistor, 1/4W	
R10	62K	Resistor, 1/4W	
R11	100K	Resistor, 1/4W	
R12	560K	Resistor, 1/4W	
R13	130K	Resistor, 1/4W	
R14	470R	Resistor, 1/4W	
R15	47K	Resistor, 1/4W	
R16	100K	Resistor, 1/4W	
R17	130K	Resistor, 1/4W	
R18	100K	Resistor, 1/4W	
R19	130K	Resistor, 1/4W	
R20	1M	Resistor, 1/4W	
R21	150R	Resistor, 1/4W	
R100	10K	Resistor, 1/4W	
R101	10K	Resistor, 1/4W	
CLR	4K7	Resistor, 1/4W	LED current limiting resistor
C1	10n	Film capacitor, 7.2 x 2.5mm	
C2	100n	Film capacitor, 7.2 x 2.5mm	
C3	27n	Film capacitor, 7.2 x 2.5mm	
C4	1u	Electrolytic capacitor, 5mm	
C5	100p	Ceramic disc capacitor	
C6	100p	Ceramic disc capacitor	
C7	82n	Film capacitor, 7.2 x 2.5mm	
C8	27n	Film capacitor, 7.2 x 2.5mm	
C9	1u	Electrolytic capacitor, 5mm	
C10	220n	Film capacitor, 7.2 x 2.5mm	
C100	100u	Electrolytic capacitor, 5mm	
C101	100n	Film capacitor, 7.2 x 2.5mm	
C102	10u	Electrolytic capacitor, 5mm	
D1	1N4148	Signal diode, DO-35	
D2	1N4148	Signal diode, DO-35	
D100	1N5817	Schottky diode, DO-41	
IC1	TL072	Dual op-amp, DIP8	
IC2	CD4049UB	CMOS Hex Buffer (Unbuffered)	
IC3	TL072	Dual op-amp, DIP8	
		Continued on next page...	



Fat Piggy Overdrive

Parts List (Page 2 of 2)

[illegible]

Fat Piggy Overdrive

Schematic Diagram

