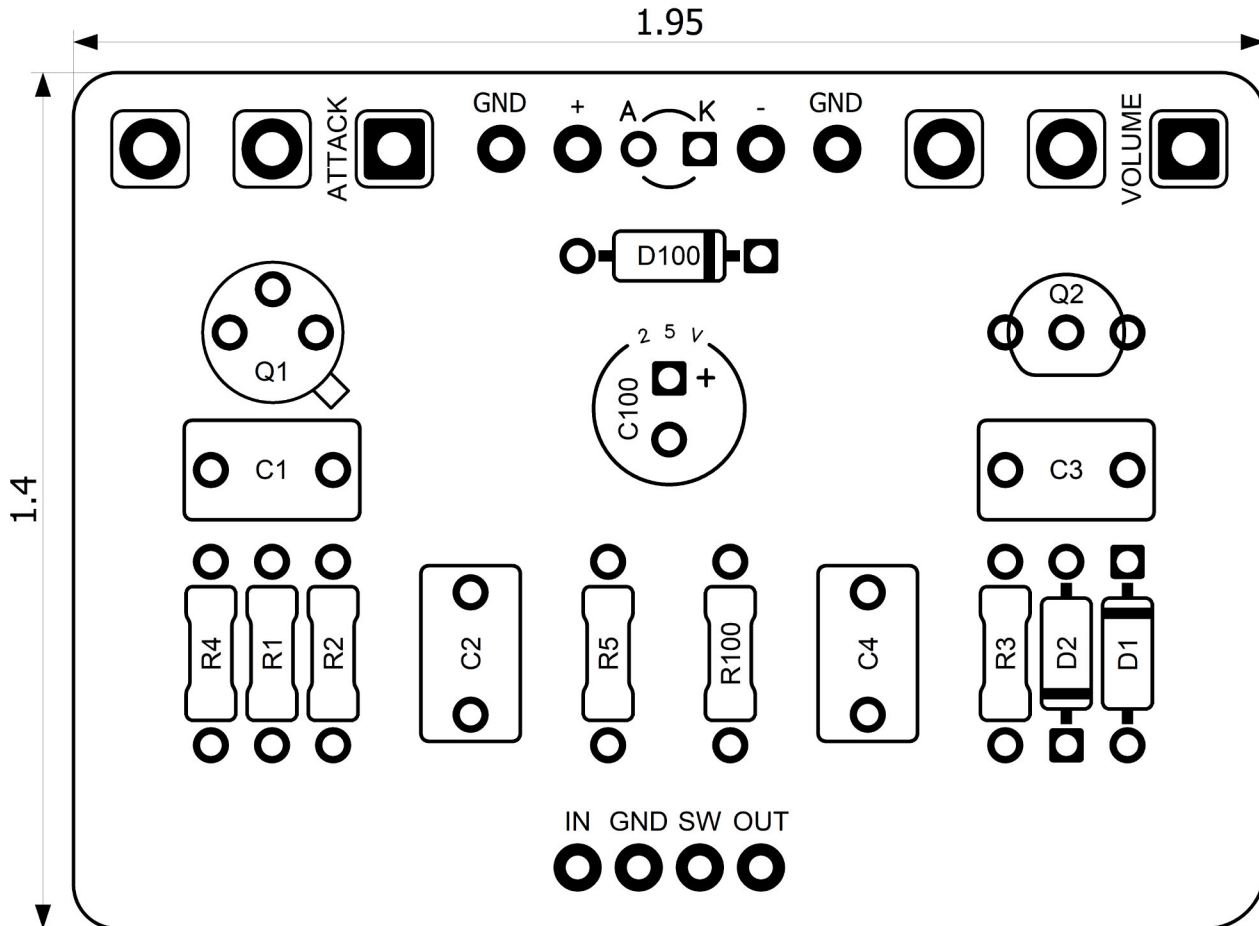


# PedalPCB

## Executive Fuzz

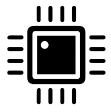
Revised 10/27/22



### CONTROLS AND FEATURES

- Volume
- Attack

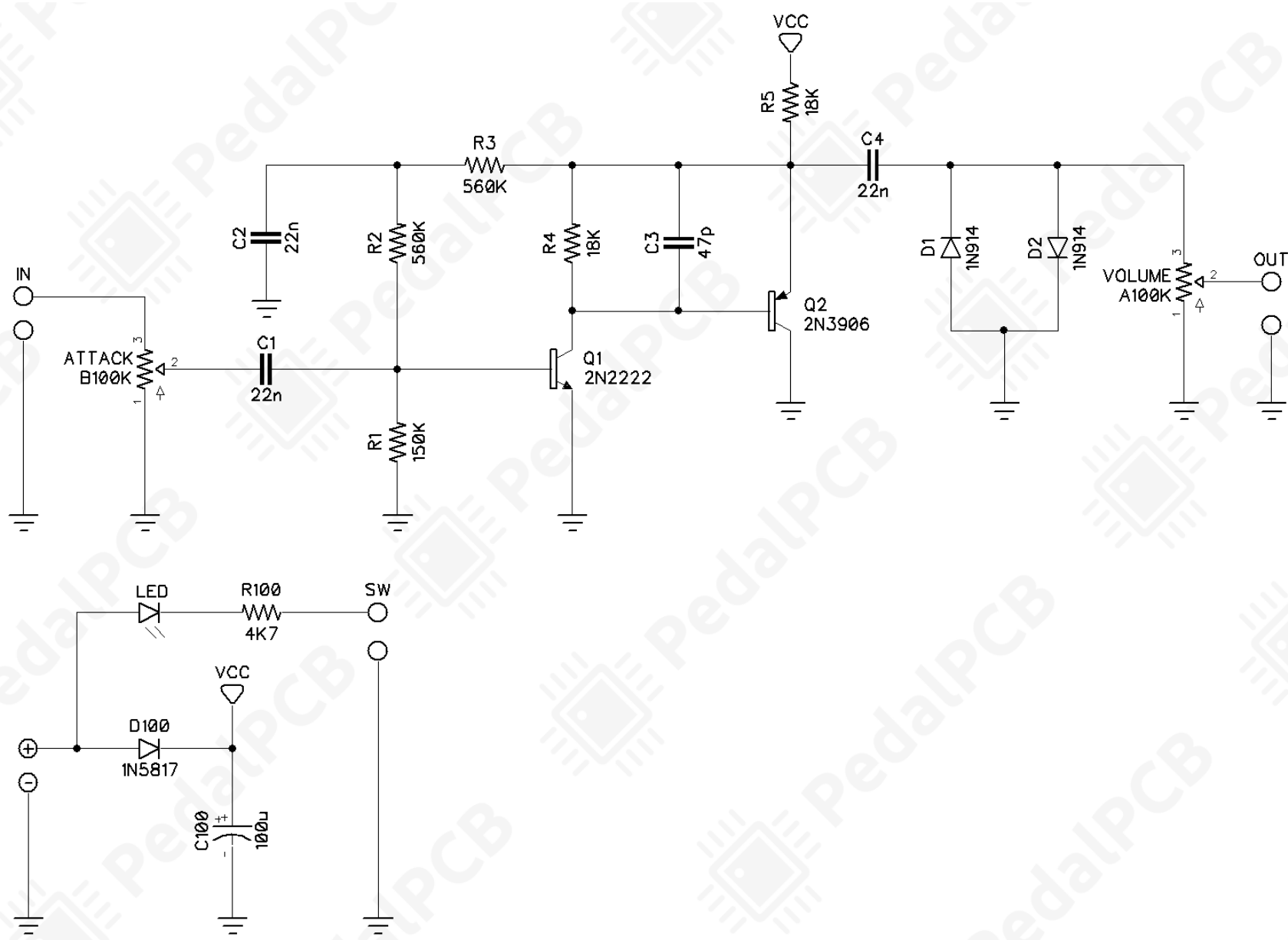
All trademarks and registered trademarks are the property of their respective owners. The company, product, and service names used in this web site are for identification purposes only. Use of these names, logos, and brands does not imply endorsement.



LOCATION	VALUE	TYPE	NOTES
R1	150K	Resistor, 1/4W	
R2	560K	Resistor, 1/4W	
R3	560K	Resistor, 1/4W	
R4	18K	Resistor, 1/4W	
R5	18K	Resistor, 1/4W	
R100	4K7	Resistor, 1/4W	
C1	22n	Film capacitor, 7.2 x 2.5mm	
C2	22n	Film capacitor, 7.2 x 2.5mm	
C3	47p	Ceramic disc capacitor	
C4	22n	Film capacitor, 7.2 x 2.5mm	
C100	100u	Electrolytic capacitor, 5mm	
D1	1N914	Signal diode, DO-35	
D2	1N914	Signal diode, DO-35	
D100	1N5817	Schottky diode, DO-41	
Q1	2N2222	BJT transistor, NPN TO-18	
Q2	2N3906	BJT transistor, NPN TO-92	
ATTACK	B100K	16mm right-angle PCB mount pot	
VOLUME	A100K	16mm right-angle PCB mount pot	

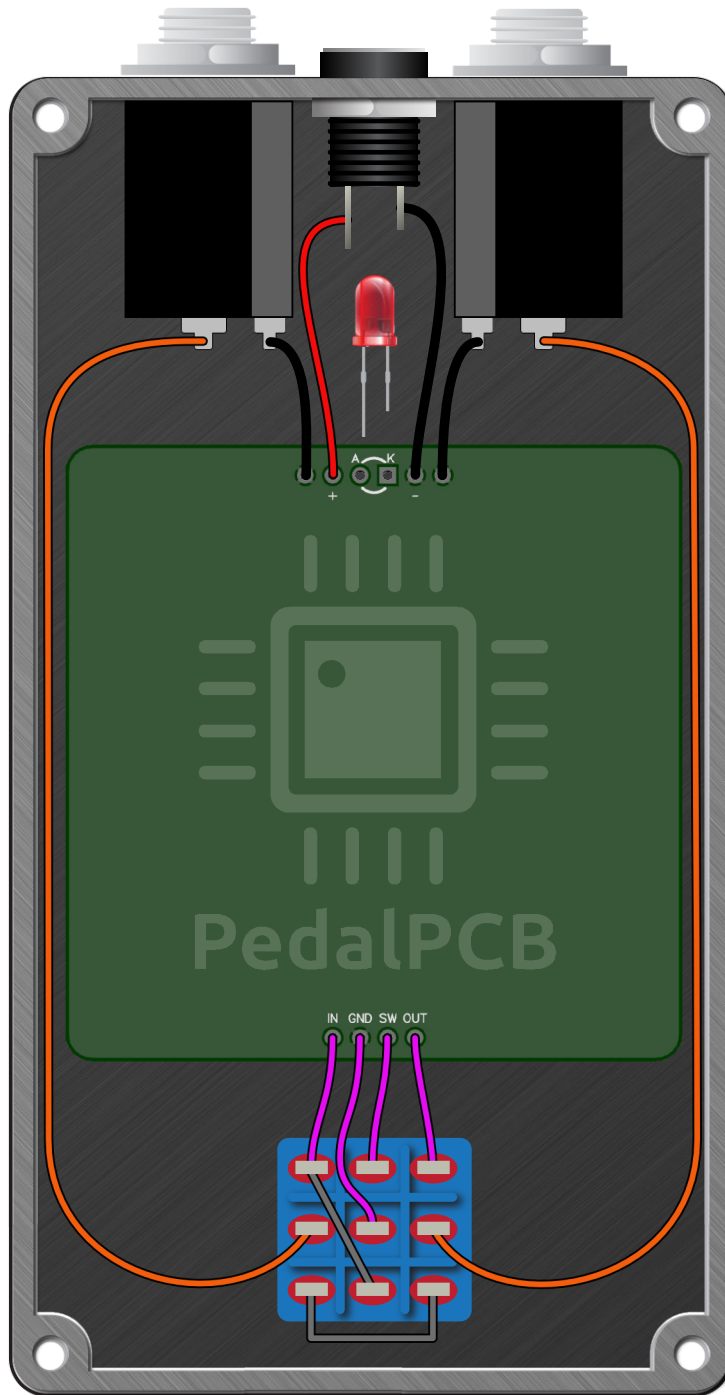
# Executive Fuzz

Schematic Diagram



# Executive Fuzz

Wiring Diagram



# Executive Fuzz

Drill Template  
125B Enclosure

