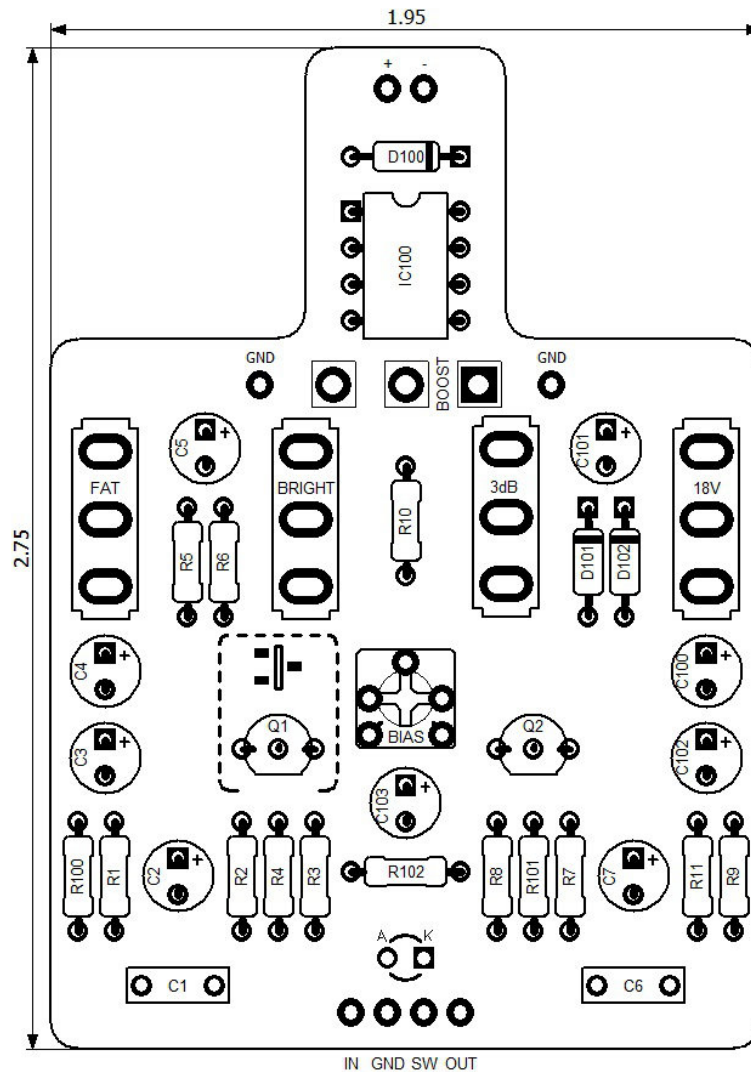




# PedalPCB

## Episode Boost

Revised 11/19/21



## CONTROLS AND FEATURES

- Boost
- 9V/18V (Toggle switch)
- 3dB Gain (Toggle switch)
- Bright (Toggle switch)
- Fat (Toggle switch)

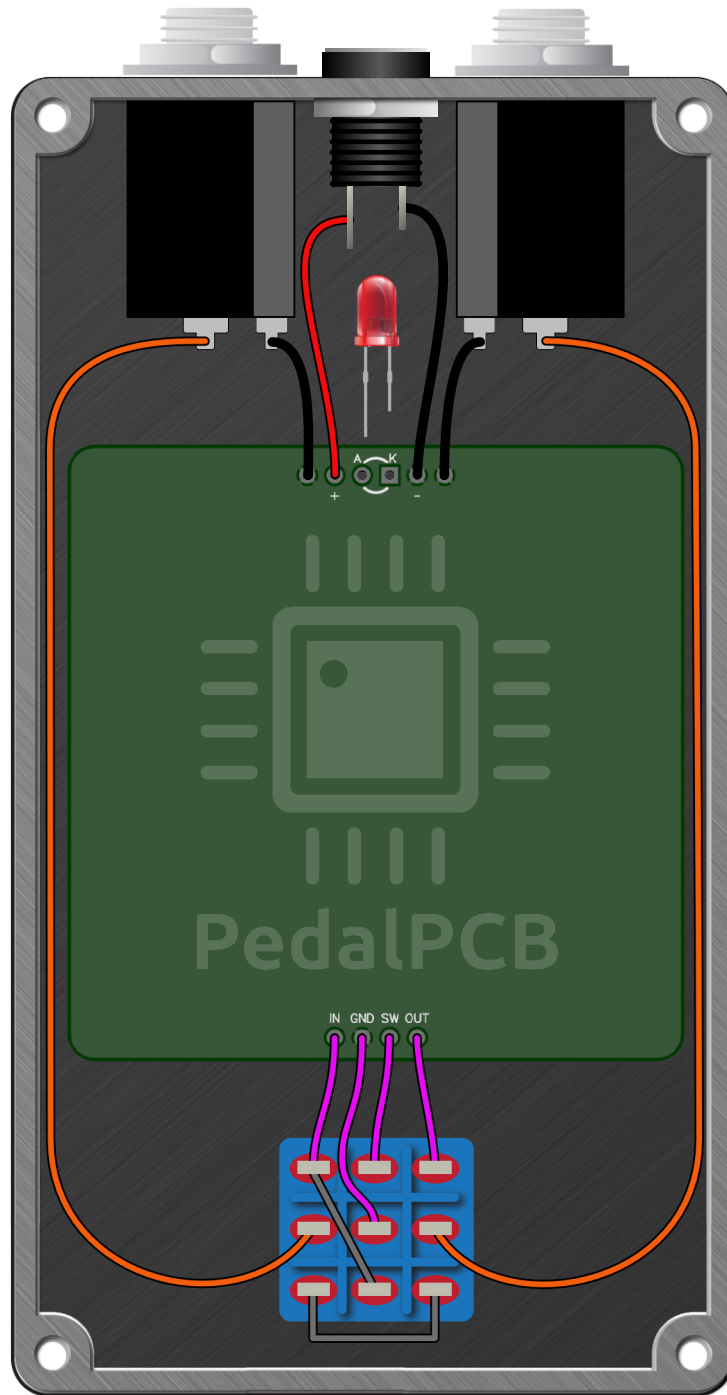
All trademarks and registered trademarks are the property of their respective owners. The company, product, and service names used in this web site are for identification purposes only. Use of these names, logos, and brands does not imply endorsement.

LOCATION	VALUE	TYPE	NOTES
R1	1M	Resistor, 1/4W	
R2	33K	Resistor, 1/4W	
R3	1M	Resistor, 1/4W	
R4	4K7	Resistor, 1/4W	
R5	1K	Resistor, 1/4W	
R6	15K	Resistor, 1/4W	
R7	1M	Resistor, 1/4W	
R8	10K	Resistor, 1/4W	
R9	100R	Resistor, 1/4W	
R10	18K	Resistor, 1/4W	
R11	47K	Resistor, 1/4W	
R100	4K7	Resistor, 1/4W	
R101	10K	Resistor, 1/4W	
R102	10K	Resistor, 1/4W	
C1	47n	Film capacitor, 7.2 x 2.5mm	
C2	10u	Electrolytic capacitor, 5mm	⚡ 25V minimum
C3	1u	Electrolytic capacitor, 5mm	⚡ 25V minimum
C4	10u	Electrolytic capacitor, 5mm	⚡ 25V minimum
C5	100u	Electrolytic capacitor, 5mm	⚡ 25V minimum
C6	3n3	Film capacitor, 7.2 x 2.5mm	
C7	10u	Electrolytic capacitor, 5mm	⚡ 25V minimum
C100	100u	Electrolytic capacitor, 5mm	⚡ 25V minimum
C101	10u	Electrolytic capacitor, 5mm	⚡ 25V minimum
C102	10u	Electrolytic capacitor, 5mm	⚡ 25V minimum
C103	10u	Electrolytic capacitor, 5mm	⚡ 25V minimum
D100	1N5817	Schottky diode, DO-41	
D101	1N5817	Schottky diode, DO-41	
D102	1N5817	Schottky diode, DO-41	
Q1	2N5457	JFET transistor, N-channel	*Alternate MMBF5457
Q2	2SC1815	BJT transistor, NPN TO-92	
IC100	TC1044SCPA	Charge pump IC, DIP8	
BIAS	50K	Trimmer potentiometer, 3362P type	
BOOST	C10K	16mm right-angle PCB mount pot	
18V	ON/ON	Toggle switch, SPDT	2-position (ON/ON)
BRIGHT	ON/ON	Toggle switch, SPDT	2-position (ON/ON)
3dB	ON/ON	Toggle switch, SPDT	2-position (ON/ON)
FAT	ON/OFF/ON	Toggle switch, SPDT	3-position (ON/OFF/ON)



# Episode Boost

Wiring Diagram



# Episode Boost

Drill Template  
125B Enclosure

