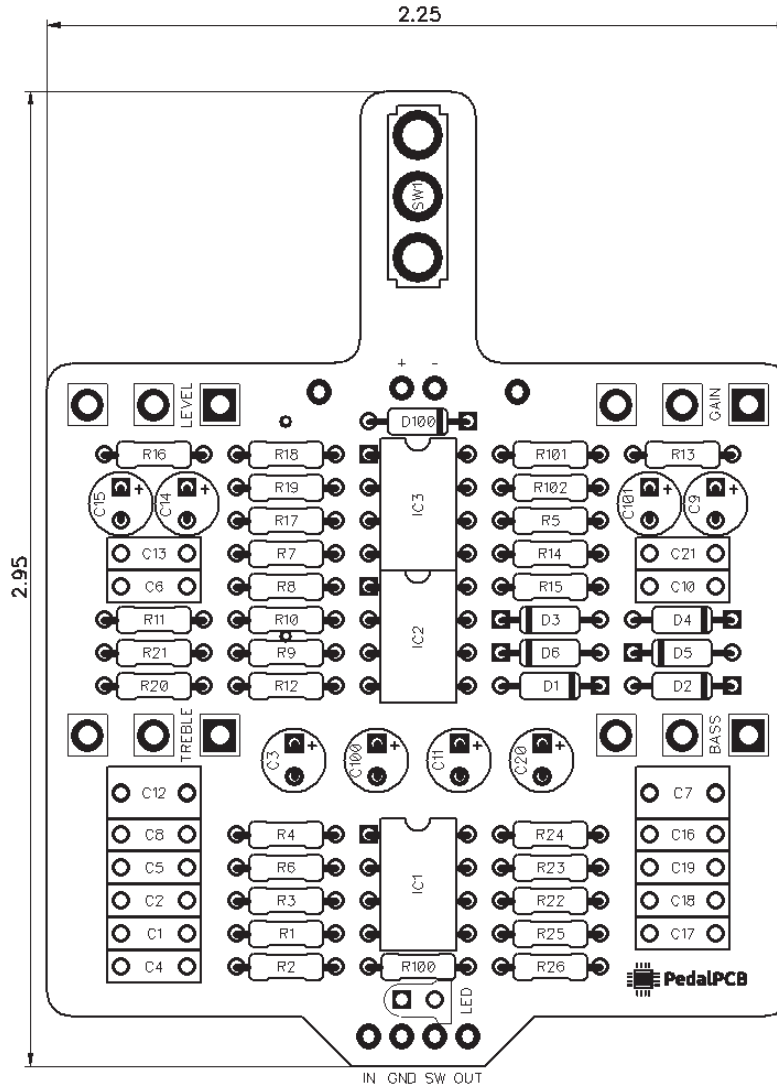




PedalPCB

Ember Boost

Revision 01.31.19



Controls

- Gain
- Level
- Bass
- Treble
- Character (Toggle switch) - (Fat/Clean/Mids)

All trademarks and registered trademarks are the property of their respective owners. The company, product, and service names used in this web site are for identification purposes only. Use of these names, logos, and brands does not imply endorsement.

RESISTORS (1/4W)

R1 1M
R2 4K3
R3 10K2
R4 10K
R5 47K
R6 100K
R7 100K
R8 10K
R9 1M
R10 1M
R11 3K9
R12 3K9
R13 22K
R14 100K
R15 10K
R16 1K
R17 47K
R18 4K7
R19 4K7
R20 3K3
R21 15K
R22 1K
R23 15K
R24 3K3
R25 100K
R26 100R
R100 4K7
R101 100K
R102 100K

CAPACITORS

C1 100n
C2 1n
C3 4u7
C4 1n
C5 100n
C6 10n
C7 220n
C8 100n
C9 1u
C10 1n
C11 1u
C12 220n
C13 1n
C14 1u
C15 10u
C16 8n2
C17 47n
C18 47n
C19 1n
C20 10u
C21 100n
C100 220u
C101 10u

INTEGRATED CIRCUITS

IC1 OPA2134
IC2 OPA2134
IC3 OPA2134

DIODES

D1 1N914
D2 1N914
D3 1N914
D4 1N914
D5 1N914
D6 1N914
D100 1N5817

POTENTIOMETERS

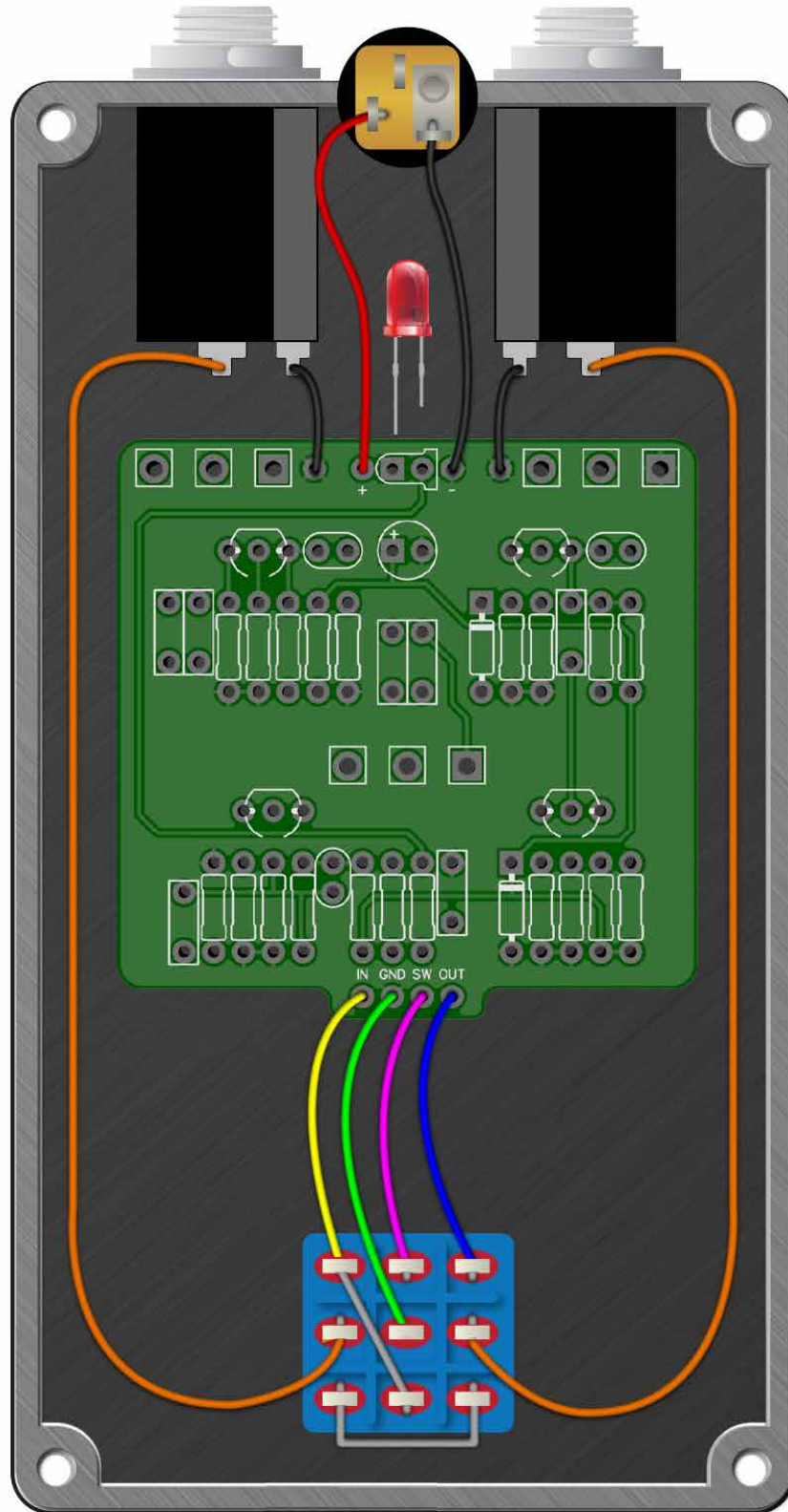
LEVEL B10K
GAIN C100K
TREBLE B50K
BASS B50K

SWITCHES

SW1 SPDT (On/Off/On)

Ember Boost

Wiring Diagram



Ember Boost

Drill Template
125B enclosure with top mounted jacks

