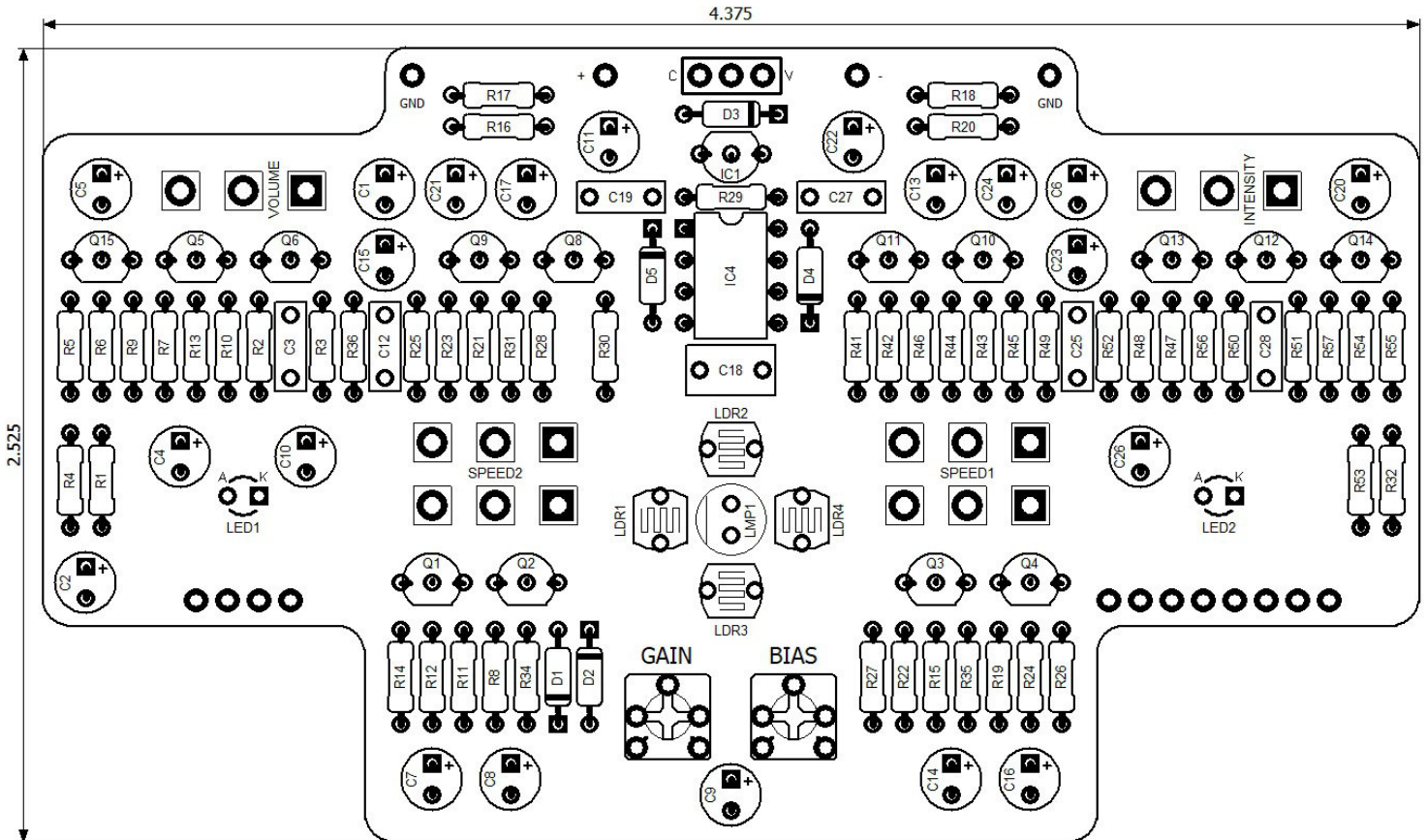




PedalPCB

ElectroVibe

Revised 4/4/26



CONTROLS

- Intensity
- Speed 1
- Speed 2
- Volume
- Chorus/Vibrato (Toggle switch)

FOOTSWITCHES

- Speed Select
- Active/Bypass

All trademarks and registered trademarks are the property of their respective owners. The company, product, and service names used in this web site are for identification purposes only. Use of these names, logos, and brands does not imply endorsement.

LOCATION	VALUE	TYPE	NOTES
R1	22K	Resistor, 1/4W	
R2	3K3	Resistor, 1/4W	
R3	4K7	Resistor, 1/4W	
R4	47K	Resistor, 1/4W	
R5	1K2	Resistor, 1/4W	
R6	1M	Resistor, 1/4W	
R7	6K8	Resistor, 1/4W	
R8	4K7	Resistor, 1/4W	
R9	1M	Resistor, 1/4W	
R10	47K	Resistor, 1/4W	
R11	3K3	Resistor, 1/4W	
R12	2M2	Resistor, 1/4W	
R13	100K	Resistor, 1/4W	
R14	4K7	Resistor, 1/4W	
R15	4K7	Resistor, 1/4W	
R16	100K	Resistor, 1/4W	
R17	100K	Resistor, 1/4W	
R18	220K	Resistor, 1/4W	
R19	4K7	Resistor, 1/4W	
R20	47K	Resistor, 1/4W	
R21	4K7	Resistor, 1/4W	
R22	47K	Resistor, 1/4W	
R23	100K	Resistor, 1/4W	
R24	4K7	Resistor, 1/4W	
R25	47K	Resistor, 1/4W	
R26	47K	Resistor, 1/4W	
R27	100R	Resistor, 1/4W	
R28	4K7	Resistor, 1/4W	
R29	47R	Resistor, 1/4W	
R30	4K7	Resistor, 1/4W	
R31	100K	Resistor, 1/4W	
R32	4K7	Resistor, 1/4W	
R34	220K	Resistor, 1/4W	
R35	220K	Resistor, 1/4W	
R36	4K7	Resistor, 1/4W	
R41	4K7	Resistor, 1/4W	
R42	100K	Resistor, 1/4W	
R43	47K	Resistor, 1/4W	
R44	4K7	Resistor, 1/4W	
R45	4K7	Resistor, 1/4W	
R46	100K	Resistor, 1/4W	
R47	4K7	Resistor, 1/4W	
R48	100K	Resistor, 1/4W	
R49	47K	Resistor, 1/4W	
R50	4K7	Resistor, 1/4W	
		<i>Continued on next page...</i>	

LOCATION	VALUE	TYPE	NOTES
R51	4K7	Resistor, 1/4W	
R52	100K	Resistor, 1/4W	
R53	4K7	Resistor, 1/4W	
R54	100K	Resistor, 1/4W	
R55	47K	Resistor, 1/4W	
R56	68K	Resistor, 1/4W	
R57	22K	Resistor, 1/4W	
C1	1u	Electrolytic capacitor, 5mm	☠ Minimum 25V
C2	1u	Electrolytic capacitor, 5mm	☠ Minimum 25V
C3	330p	Ceramic capacitor	
C4	1u	Electrolytic capacitor, 5mm	☠ Minimum 25V
C5	1u	Electrolytic capacitor, 5mm	☠ Minimum 25V
C6	1u	Electrolytic capacitor, 5mm	☠ Minimum 25V
C7	1u	Electrolytic capacitor, 5mm	☠ Minimum 25V
C8	1u	Electrolytic capacitor, 5mm	☠ Minimum 25V
C9	1u	Electrolytic capacitor, 5mm	☠ Minimum 25V
C10	1u	Electrolytic capacitor, 5mm	☠ Minimum 25V
C11	100u	Electrolytic capacitor, 5mm	☠ Minimum 25V
C12	15n	Film capacitor, 7.2 x 2.5mm	
C13	1u	Electrolytic capacitor, 5mm	☠ Minimum 25V
C14	10u	Electrolytic capacitor, 5mm	☠ Minimum 25V
C15	1u	Electrolytic capacitor, 5mm	☠ Minimum 25V
C16	10u	Electrolytic capacitor, 5mm	☠ Minimum 25V
C17	47u	Electrolytic capacitor, 5mm	☠ Minimum 25V
C18	220n	Film capacitor, 7.2 x 5.0mm	
C19	100n	Film capacitor, 7.2 x 2.5mm	
C20	1u	Electrolytic capacitor, 5mm	☠ Minimum 25V
C21	1u	Electrolytic capacitor, 5mm	☠ Minimum 25V
C22	100u	Electrolytic capacitor, 5mm	☠ Minimum 25V
C23	1u	Electrolytic capacitor, 5mm	☠ Minimum 25V
C24	1u	Electrolytic capacitor, 5mm	☠ Minimum 25V
C25	470p	Ceramic capacitor	
C26	1u	Electrolytic capacitor, 5mm	☠ Minimum 25V
C27	100n	Film capacitor, 7.2 x 2.5mm	
C28	4n7	Film capacitor, 7.2 x 2.5mm	
D1	1N4148	Signal diode, DO-35	
D2	1N4148	Signal diode, DO-35	
D3	1N5817	Schottky diode, DO-41	
D4	1N5817	Schottky diode, DO-41	
D5	1N5817	Schottky diode, DO-41	
IC1	L78L12	Voltage regulator, +12V	
IC4	LT1054	Charge pump IC, DIP8	
		<i>Continued on next page...</i>	

LOCATION	VALUE	TYPE	NOTES
Q1	2N5088	BJT transistor, NPN TO-92	
Q2	2N5088	BJT transistor, NPN TO-92	
Q3	2N5088	BJT transistor, NPN TO-92	
Q4	2N5088	BJT transistor, NPN TO-92	
Q5	2N5088	BJT transistor, NPN TO-92	
Q6	2N5088	BJT transistor, NPN TO-92	
Q8	2N5088	BJT transistor, NPN TO-92	
Q9	2N5088	BJT transistor, NPN TO-92	
Q10	2N5088	BJT transistor, NPN TO-92	
Q11	2N5088	BJT transistor, NPN TO-92	
Q12	2N5088	BJT transistor, NPN TO-92	
Q13	2N5088	BJT transistor, NPN TO-92	
Q14	2N5088	BJT transistor, NPN TO-92	
Q15	2N5088	BJT transistor, NPN TO-92	
LDR1		Light Dependent Resistor	(7530, 7532, 9203, or similar)
LDR2		Light Dependent Resistor	(7530, 7532, 9203, or similar)
LDR3		Light Dependent Resistor	(7530, 7532, 9203, or similar)
LDR4		Light Dependent Resistor	(7530, 7532, 9203, or similar)
LMP1	2174	Incandescent lamp (12V, 40mA)	Alternate: 2102 , 7371
BIAS	250K	Trimmer potentiometer, 3362P type	
GAIN	500R	Trimmer potentiometer, 3362P type	
INTENSITY	B50K	16mm right-angle PCB mount pot	
VOLUME	B100K	16mm right-angle PCB mount pot	
SPEED1	C100K DUAL	16mm right-angle PCB mount pot	☛ Dual-gang potentiometer
SPEED2	C100K DUAL	16mm right-angle PCB mount pot	☛ Dual-gang potentiometer
CV	SPDT	Toggle switch, SPDT	2-position (ON/ON)

