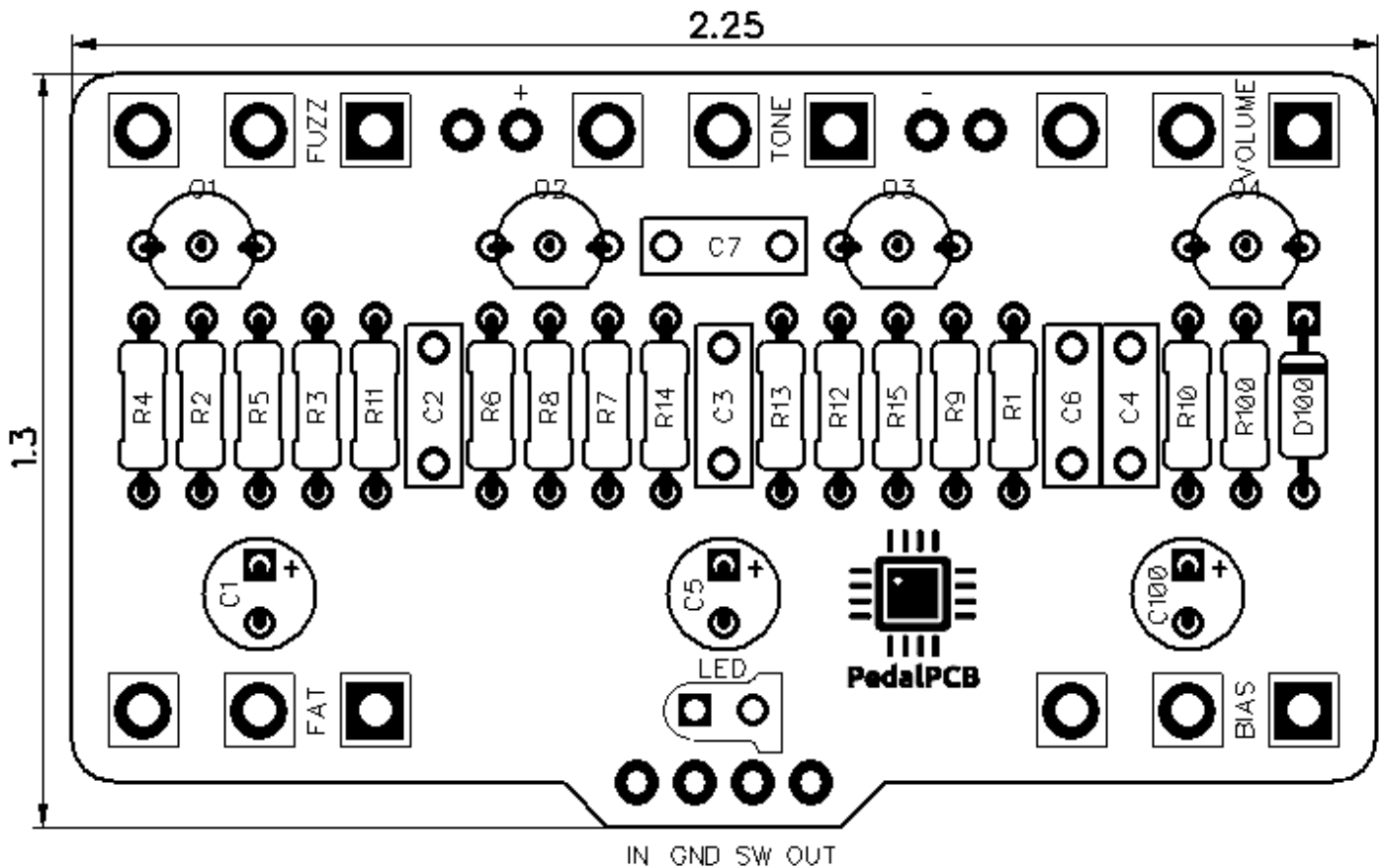




PedalPCB

Dung Beetle

Revision 06.29.18



Controls

- **Volume** - Sets the overall output volume
- **Tone** - Controls the warmth / brightness
- **Fuzz** - Controls the level of fuzz
- **Fat** - Controls the low end tone
- **Bias** - Sets the third stage transistor bias current

All trademarks and registered trademarks are the property of their respective owners. The company, product, and service names used in this web site are for identification purposes only. Use of these names, logos, and brands does not imply endorsement.

Dung Beetle

Parts List

RESISTORS

R1 1M
R2 22K
R3 150K
R4 1K
R5 10K
R6 100R
R7 10K
R8 47K
R9 1K
R10 10K
R11 750R
R12 100R
R13 10K
R14 4K7
R15 2K2
R100 4K7

CAPACITORS

C1 10u
C2 10n
C3 100n
C4 100n
C5 4u7
C6 100n
C7 8n2
C100 100u

TRANSISTORS

Q1 2N5088
Q2 2N5088
Q3 2N5088
Q4 2N5088

DIODES

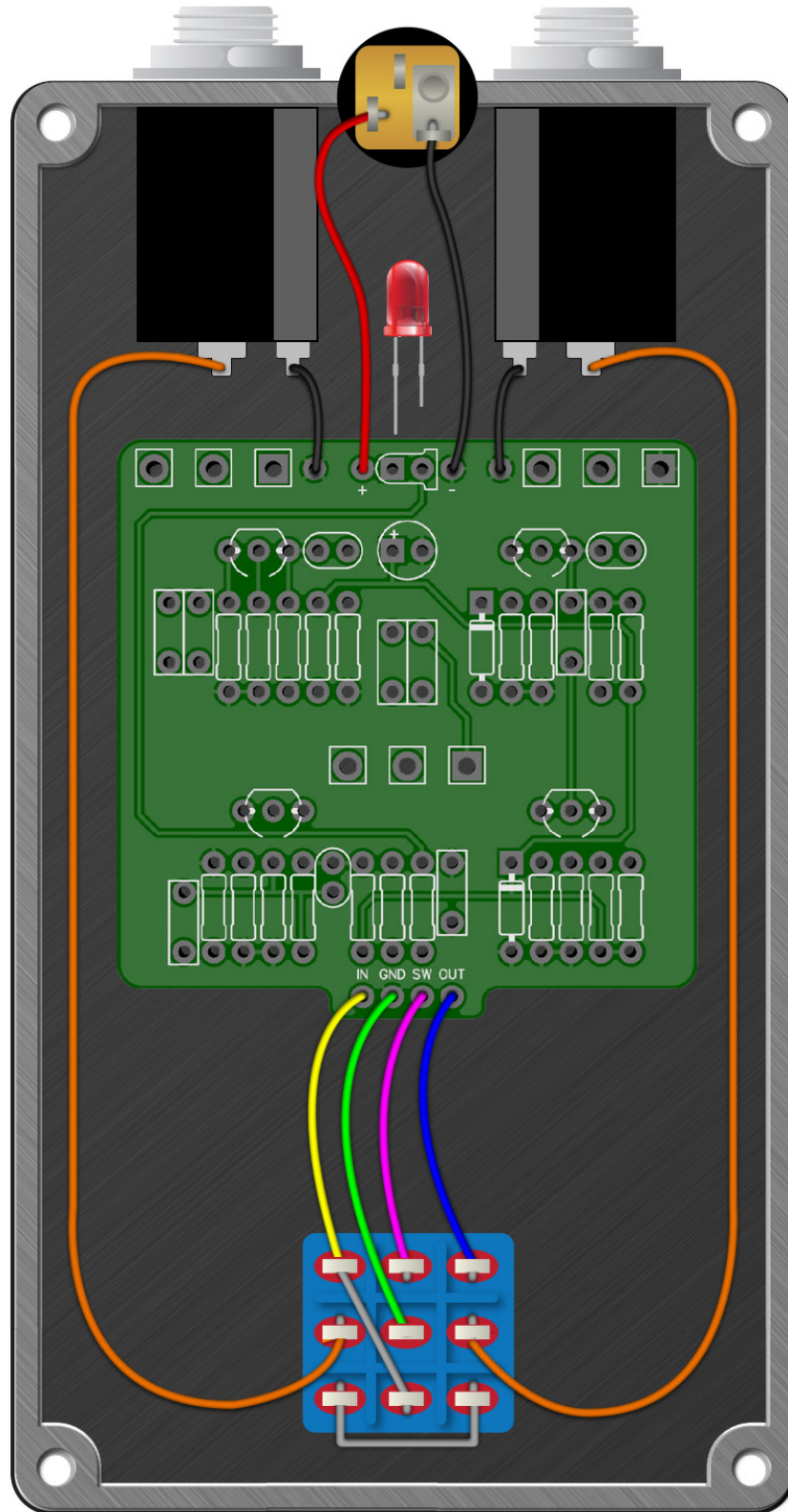
D100 1N5817

POTENTIOMETERS

VOLUME A100K
TONE B50K
FUZZ B1K
FAT B100K
BIAS B25K

Dung Beetle

Wiring Diagram



Dung Beetle

Drill Template
125B enclosure with top mounted jacks

