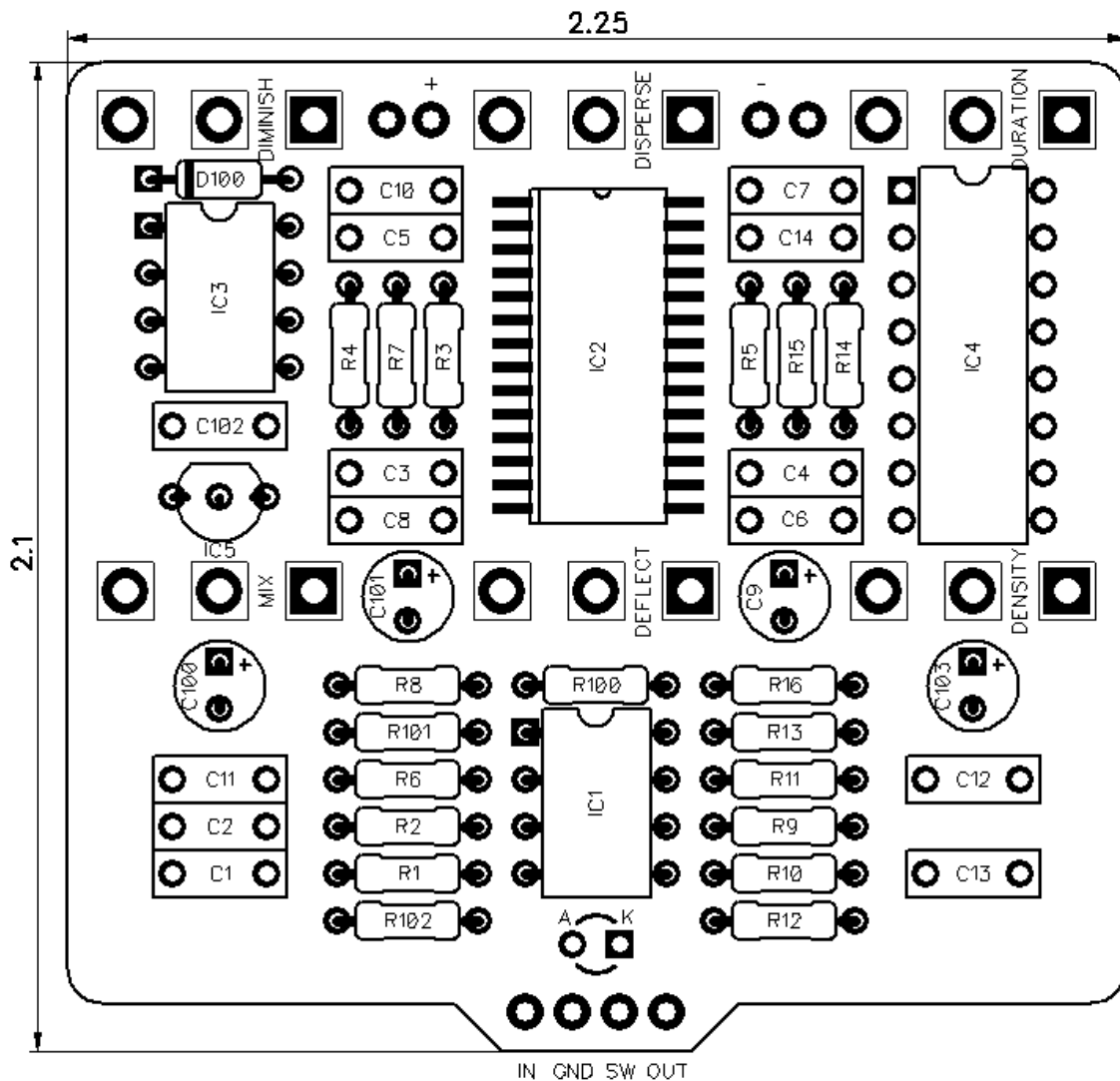




PedalPCB

Deflector Reverb

Revision 06.15.20



Controls

- Duration
- Disperse
- Diminish
- Density
- Deflect
- Dilute

All trademarks and registered trademarks are the property of their respective owners. The company, product, and service names used in this web site are for identification purposes only. Use of these names, logos, and brands does not imply endorsement.

Deflector Reverb

Parts List

RESISTORS (1/4W)

R1 1M
 R2 1M
 R3 1K
 R4 22K
 R5 100R
 R6 100K
 R7 4K7
 R8 2K2
 R9 10K
 R10 47K
 R11 22K
 R12 470R
 R13 100K
 R14 6K2
 R15 10K
 R16 100K
 R100 10K
 R101 10K
 R102 4K7

CAPACITORS

C1 100n
 C2 1u MLCC
 C3 1n
 C4 100n
 C5 1u MLCC
 C6 1u MLCC
 C7 1u MLCC
 C8 1u MLCC
 C9 4u7
 C10 1n
 C11 1n
 C12 1n
 C13 1u MLCC
 C14 2n2
 C100 100u
 C101 10u
 C102 100n
 C103 100u

INTEGRATED CIRCUITS

IC1 TL072
 IC2 SPIN FV-1
 IC3 24LC32A **Included*
 IC4 CD4049UB
 IC5 L78L33

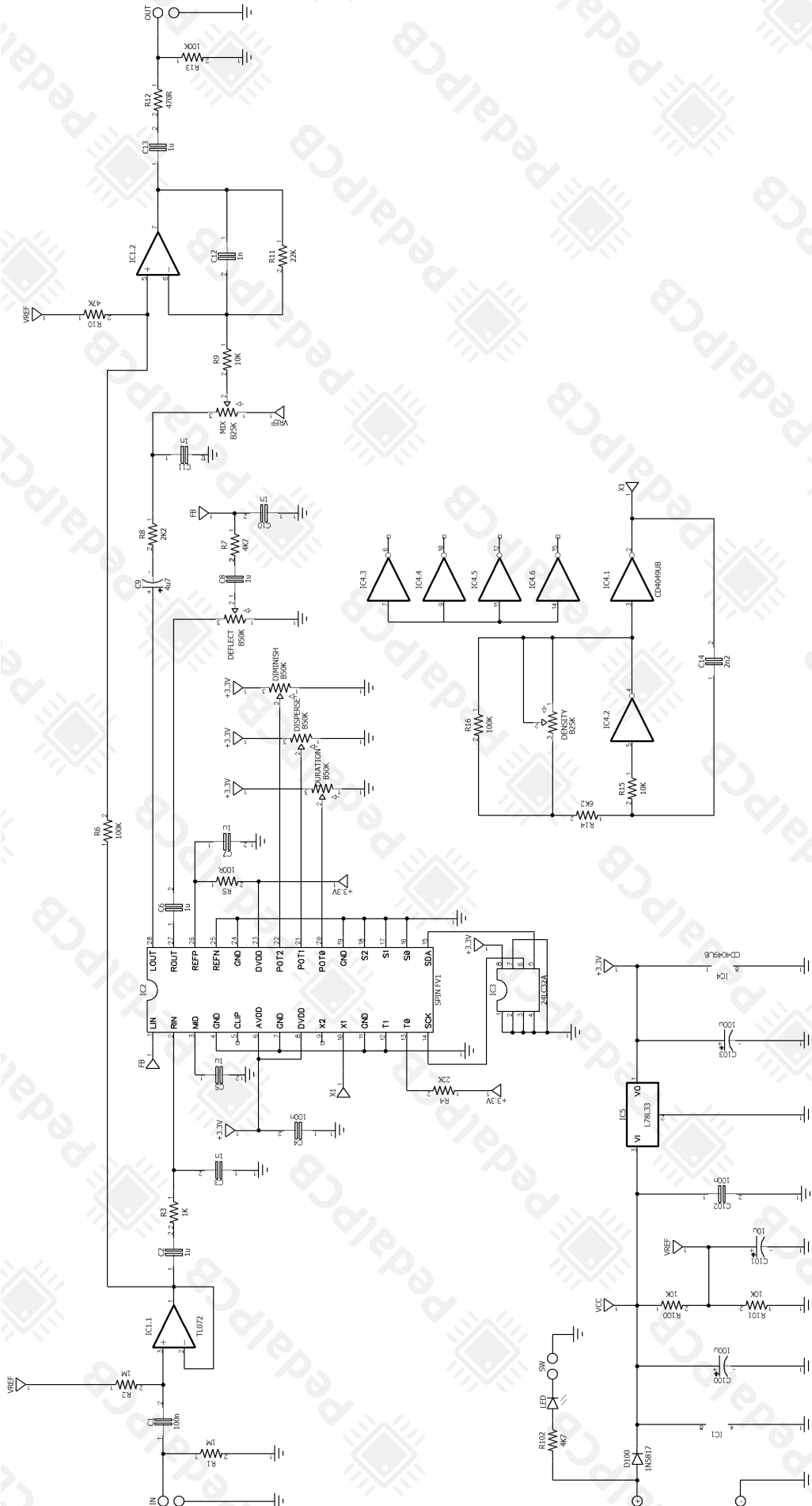
DIODES

D100 1N5817

POTENTIOMETERS

DISPERSE B50K
 DEFLECT B50K
 DIMINISH B50K
 DENSITY B25K
 DURATION B50K
 DILUTE B25K

Deflector Reverb



Deflector Reverb

Wiring Diagram



Deflector Reverb

Drill Template
125B Enclosure

