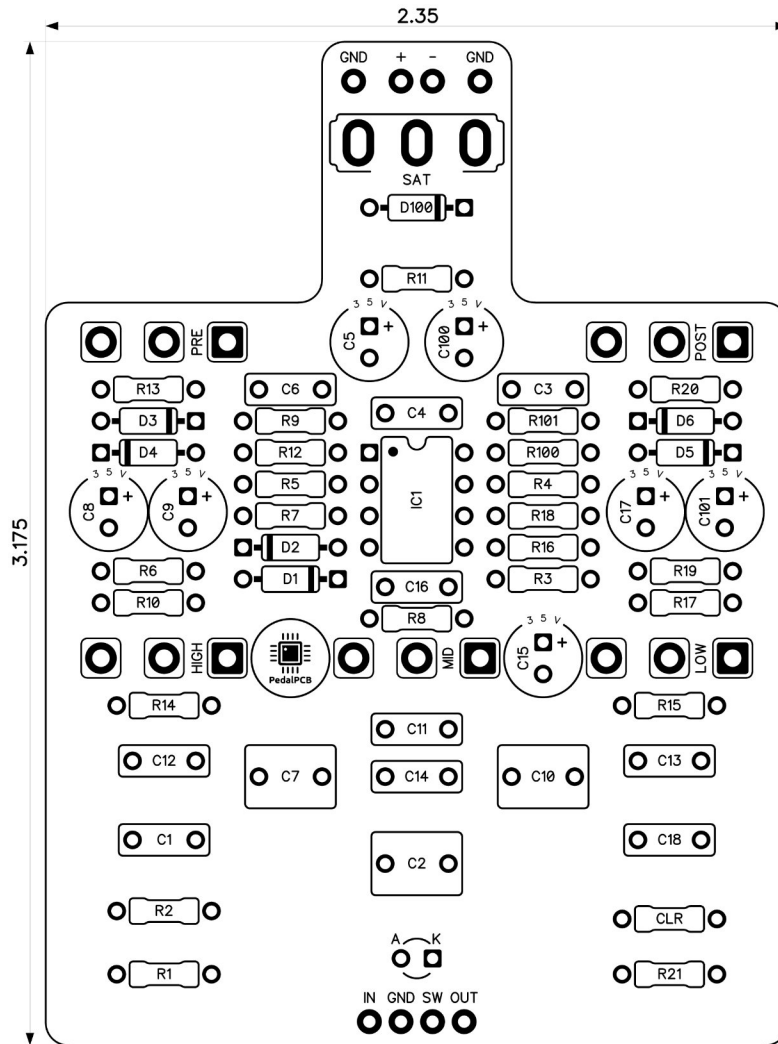


# PedalPCB

## Decadence Preamp

Revised 9/13/23



### CONTROLS AND FEATURES

- Post
- Pre
- Low
- Mid
- High
- Saturation (Toggle switch)

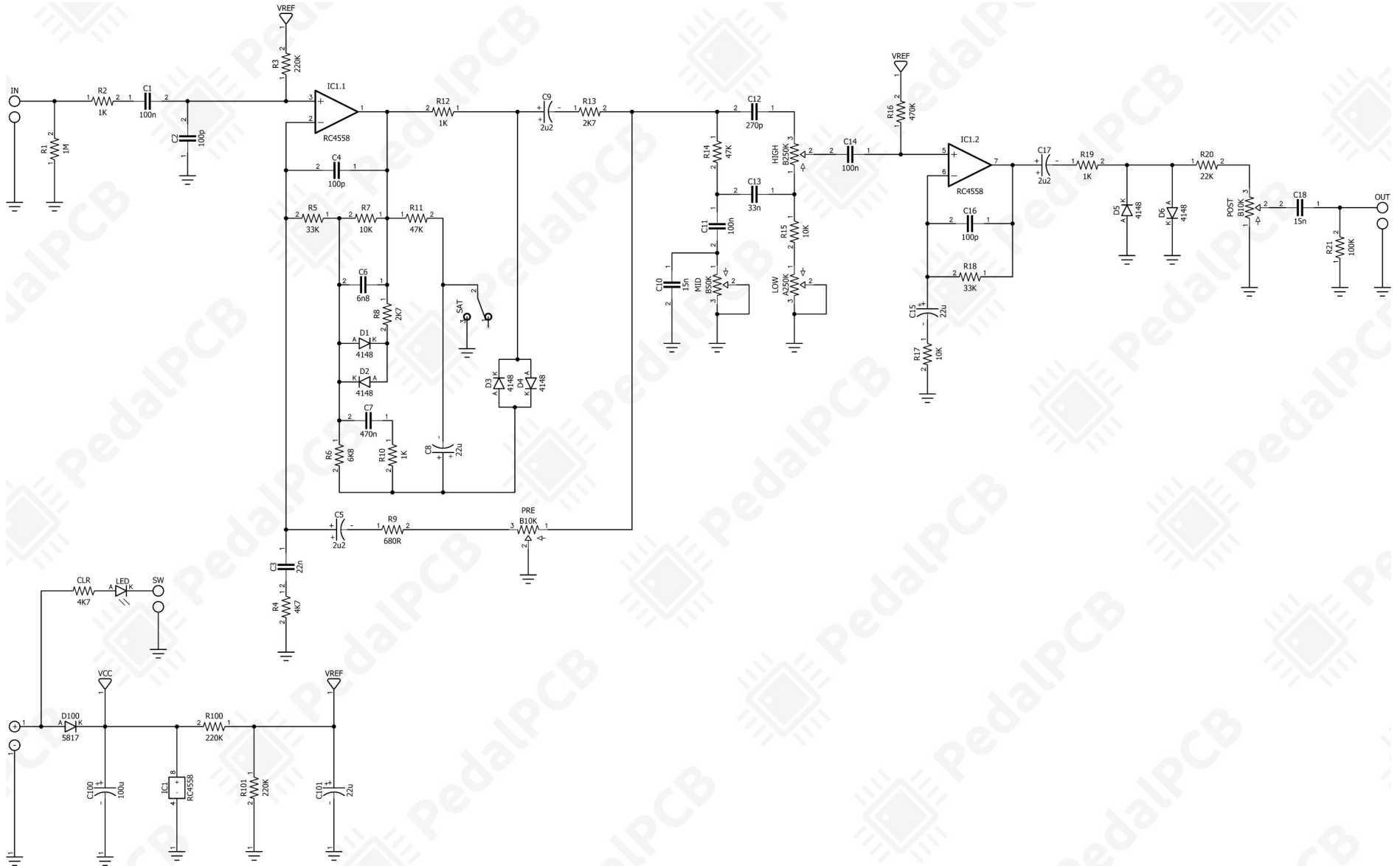
All trademarks and registered trademarks are the property of their respective owners. The company, product, and service names used in this web site are for identification purposes only. Use of these names, logos, and brands does not imply endorsement.

LOCATION	VALUE	TYPE	NOTES
R1	1M	Resistor, 1/4W	
R2	1K	Resistor, 1/4W	
R3	220K	Resistor, 1/4W	
R4	4K7	Resistor, 1/4W	
R5	33K	Resistor, 1/4W	
R6	6K8	Resistor, 1/4W	
R7	10K	Resistor, 1/4W	
R8	2K7	Resistor, 1/4W	
R9	680R	Resistor, 1/4W	
R10	1K	Resistor, 1/4W	
R11	47K	Resistor, 1/4W	
R12	1K	Resistor, 1/4W	
R13	2K7	Resistor, 1/4W	
R14	47K	Resistor, 1/4W	
R15	10K	Resistor, 1/4W	
R16	470K	Resistor, 1/4W	
R17	10K	Resistor, 1/4W	
R18	33K	Resistor, 1/4W	
R19	1K	Resistor, 1/4W	
R20	22K	Resistor, 1/4W	
R21	100K	Resistor, 1/4W	
R100	220K	Resistor, 1/4W	
R101	220K	Resistor, 1/4W	
CLR	4K7	Resistor, 1/4W	* LED current limiting resistor
C1	100n	Film capacitor, 7.2 x 2.5mm	
C2	100p	Ceramic capacitor	
C3	22n	Film capacitor, 7.2 x 2.5mm	
C4	100p	Ceramic capacitor	
C5	2u2	Electrolytic capacitor, 5mm	
C6	6n8	Film capacitor, 7.2 x 2.5mm	
C7	470n	Film capacitor, 7.2 x 5.0mm	
C8	22u	Electrolytic capacitor, 5mm	
C9	2u2	Electrolytic capacitor, 5mm	
C10	15n	Film capacitor, 7.2 x 2.5mm	
C11	100n	Film capacitor, 7.2 x 2.5mm	
C12	270p	Ceramic capacitor	
C13	33n	Film capacitor, 7.2 x 2.5mm	
C14	100n	Film capacitor, 7.2 x 2.5mm	
C15	22u	Electrolytic capacitor, 5mm	
C16	100p	Ceramic capacitor	
C17	2u2	Electrolytic capacitor, 5mm	
C18	15n	Film capacitor, 7.2 x 2.5mm	
C100	100u	Electrolytic capacitor, 5mm	
C101	22u	Electrolytic capacitor, 5mm	
		<i>Continued on next page...</i>	



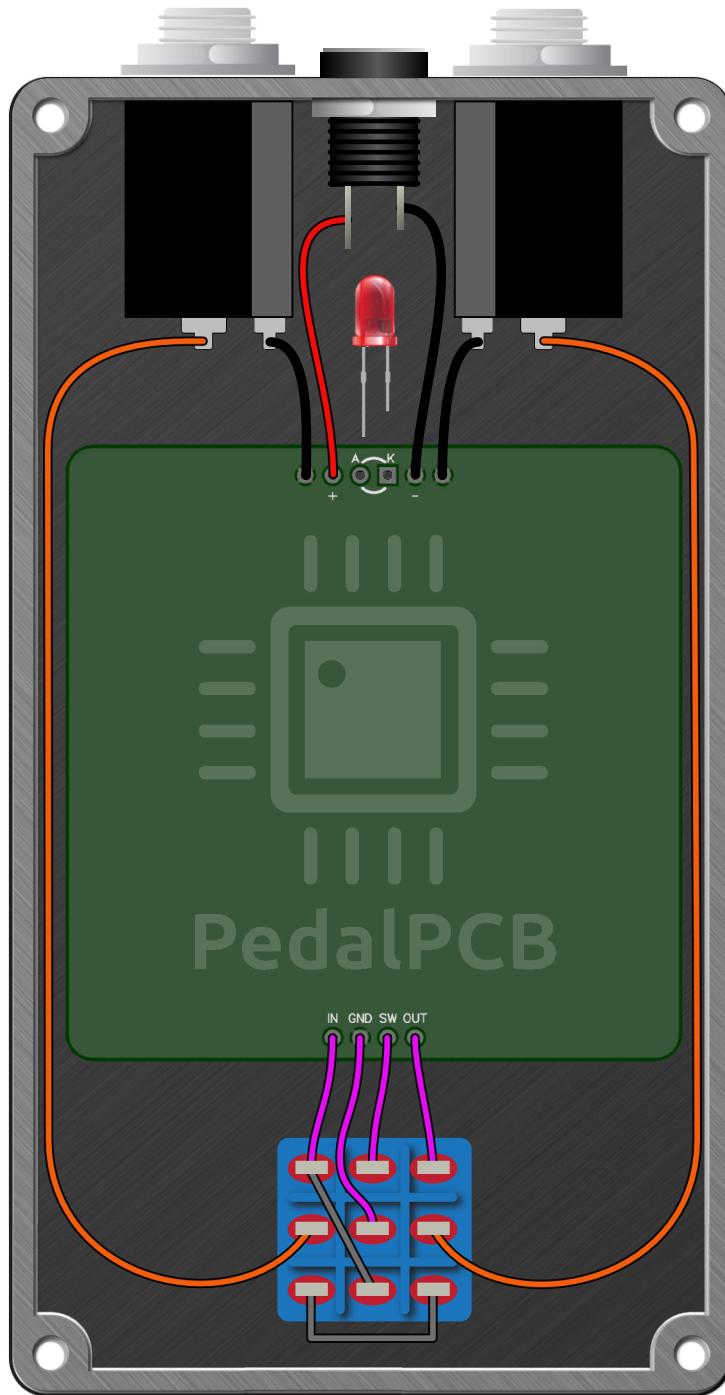
# Decadence Preamp

Schematic Diagram



# Decadence Preamp

## Wiring Diagram



# Decadence Preamp

Drill Template  
125B Enclosure

