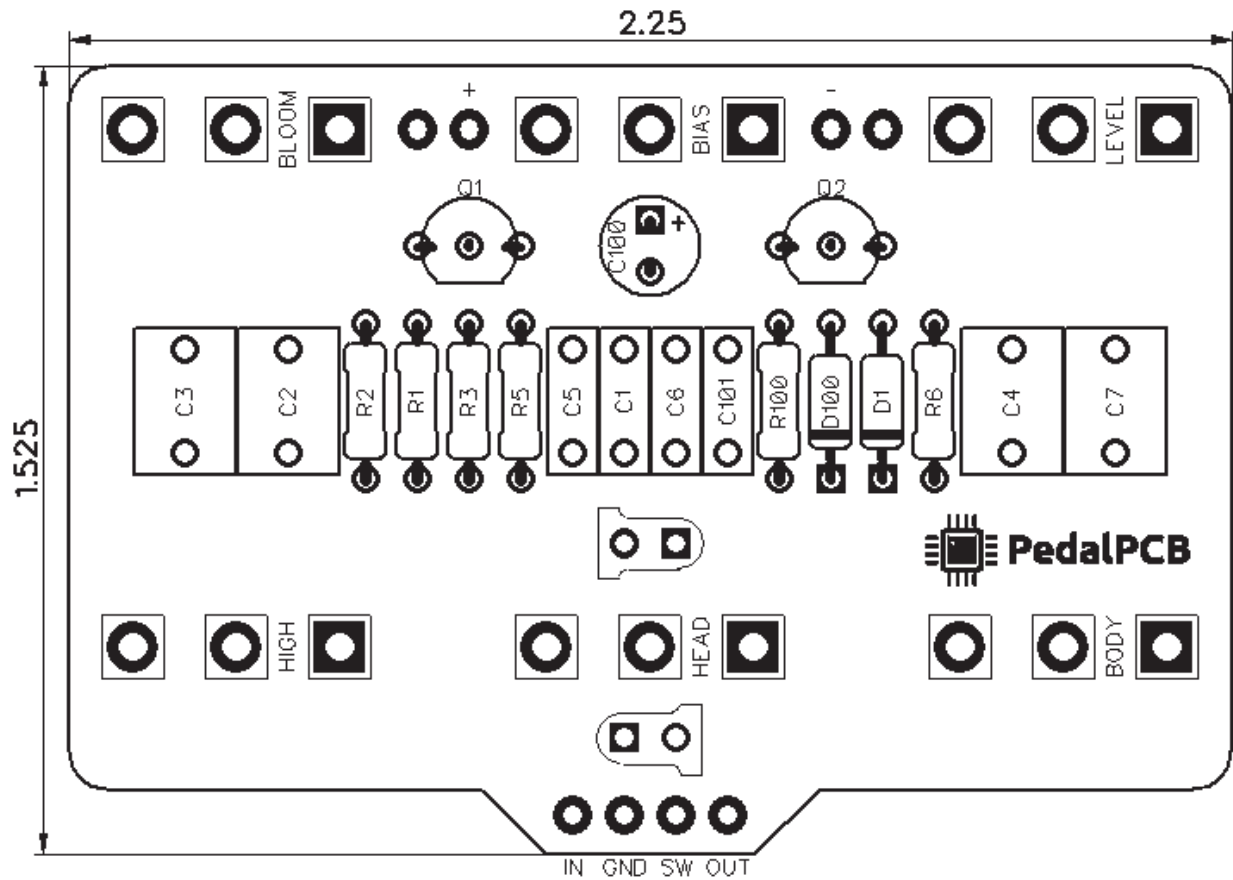




# PedalPCB

## Death Cap Fuzz

Revision 12.16.18



### Controls

- Bloom
- Bias
- Level
- High
- Head
- Body

# Death Cap Fuzz

## Parts List

**RESISTORS (1/4W)**

R1 1K  
R2 1M  
R3 2M2  
R5 47K  
R6 100K  
R100 4K7

**CAPACITORS**

C1 470p  
C2 1u  
C3 1u  
C4 1u  
C5 33n  
C6 4n7  
C7 1u  
C100 100u  
C101 47n

**DIODES**

D1 1N914  
D2 3mm Red LED  
D100 1N5817

**TRANSISTORS**

Q1 2N5089  
Q2 2N5089

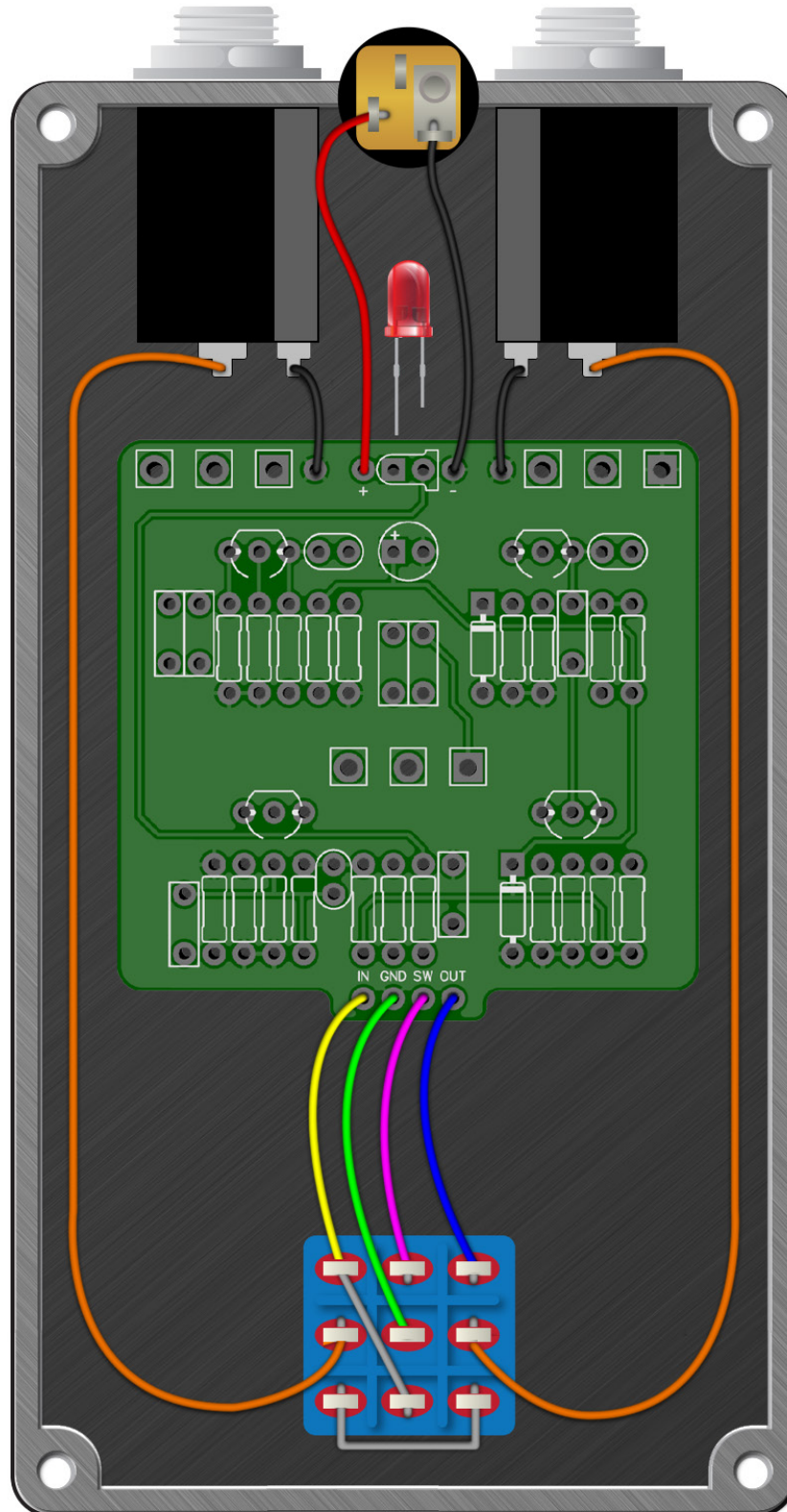
**POTENTIOMETERS**

BIAS B1K  
BLOOM A100K  
BODY A100K  
HEAD A100K  
HIGH A100K  
LEVEL A100K



# Death Cap Fuzz

Wiring Diagram



# Death Cap Fuzz

Drill Template  
125B enclosure with top mounted jacks

