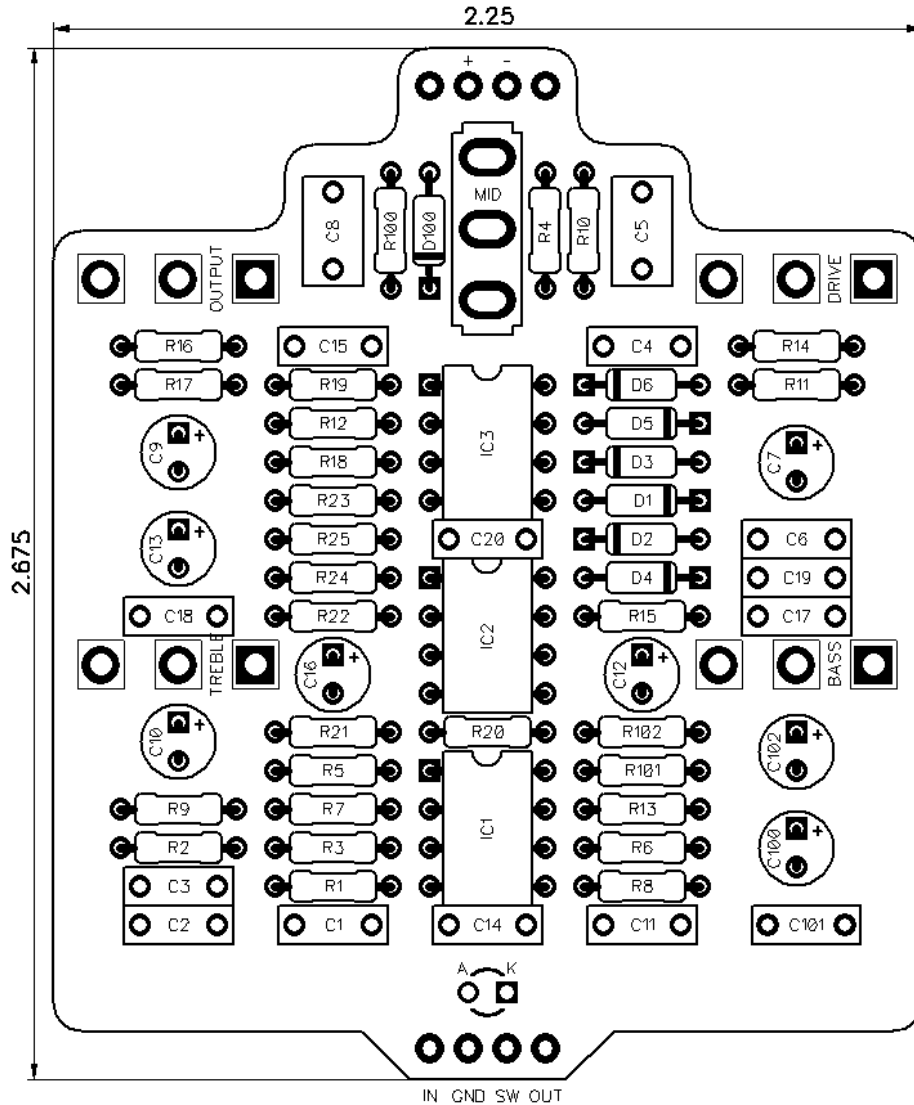




# Dark Esbat Boost

Revised 2/7/21



## CONTROLS AND FEATURES

- Drive
- Output
- Bass
- Treble
- Mid (Toggle switch)

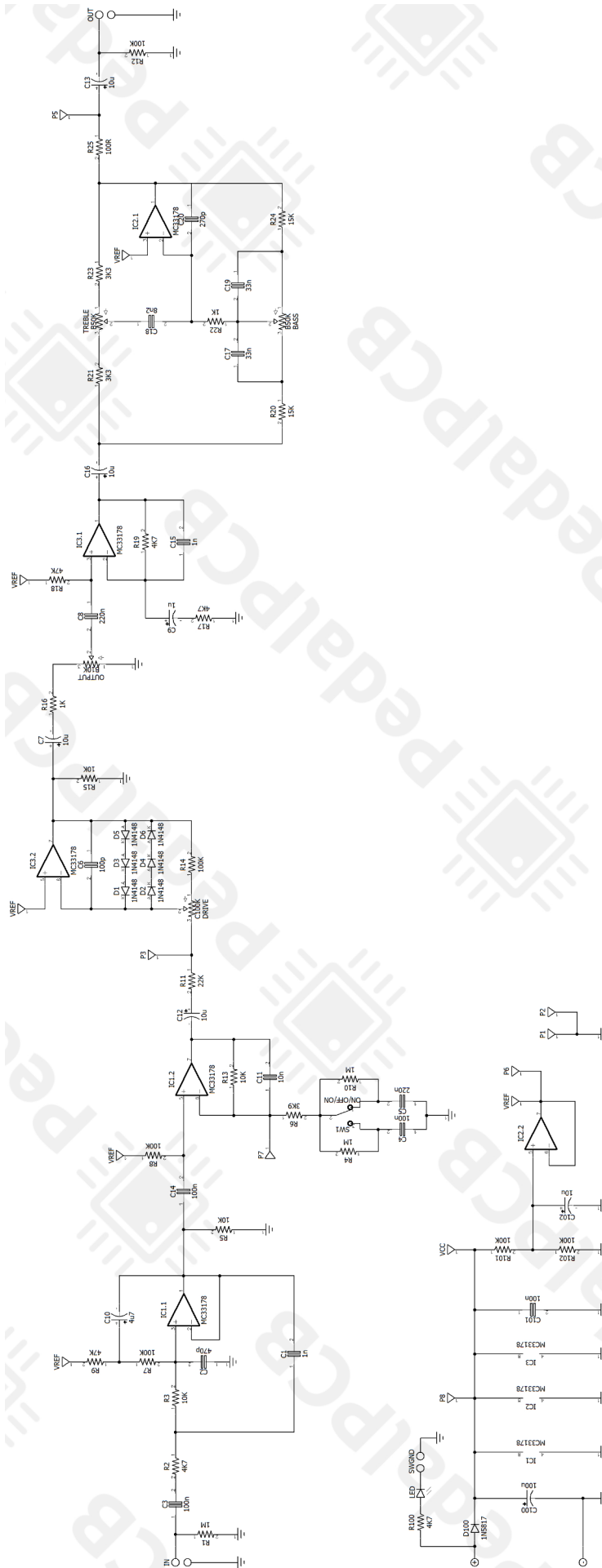
All trademarks and registered trademarks are the property of their respective owners. The company, product, and service names used in this web site are for identification purposes only. Use of these names, logos, and brands does not imply endorsement.

LOCATION	VALUE	TYPE	NOTES
R1	1M	Resistor, 1/4W	
R2	4K7	Resistor, 1/4W	
R3	10K	Resistor, 1/4W	
R4	1M	Resistor, 1/4W	
R5	10K	Resistor, 1/4W	
R6	3K9	Resistor, 1/4W	
R7	100K	Resistor, 1/4W	
R8	100K	Resistor, 1/4W	
R9	47K	Resistor, 1/4W	
R10	1M	Resistor, 1/4W	
R11	22K	Resistor, 1/4W	
R12	100K	Resistor, 1/4W	
R13	10K	Resistor, 1/4W	
R14	100K	Resistor, 1/4W	
R15	10K	Resistor, 1/4W	
R16	1K	Resistor, 1/4W	
R17	4K7	Resistor, 1/4W	
R18	47K	Resistor, 1/4W	
R19	4K7	Resistor, 1/4W	
R20	15K	Resistor, 1/4W	
R21	3K3	Resistor, 1/4W	
R22	1K	Resistor, 1/4W	
R23	3K3	Resistor, 1/4W	
R24	15K	Resistor, 1/4W	
R25	100R	Resistor, 1/4W	
R100	4K7	Resistor, 1/4W	
R101	100K	Resistor, 1/4W	
R102	100K	Resistor, 1/4W	
C1	1n	Film capacitor, 7.2 x 2.5mm	
C2	470p	Ceramic capacitor	
C3	100n	Film capacitor, 7.2 x 2.5mm	
C4	100n	Film capacitor, 7.2 x 2.5mm	
C5	220n	Film capacitor, 7.2 x 5.0mm	
C6	100p	Ceramic capacitor	
C7	10u	Electrolytic capacitor, 5mm	
C8	220n	Film capacitor, 7.2 x 5.0mm	
C9	1u	Electrolytic capacitor, 5mm	
C10	4u7	Electrolytic capacitor, 5mm	
C11	10n	Film capacitor, 7.2 x 2.5mm	
C12	10u	Electrolytic capacitor, 5mm	
C13	10u	Electrolytic capacitor, 5mm	
C14	100n	Film capacitor, 7.2 x 2.5mm	
C15	1n	Film capacitor, 7.2 x 2.5mm	
C16	10u	Electrolytic capacitor, 5mm	
C17	33n	Film capacitor, 7.2 x 2.5mm	
C18	8n2	Film capacitor, 7.2 x 2.5mm	
C19	33n	Film capacitor, 7.2 x 2.5mm	



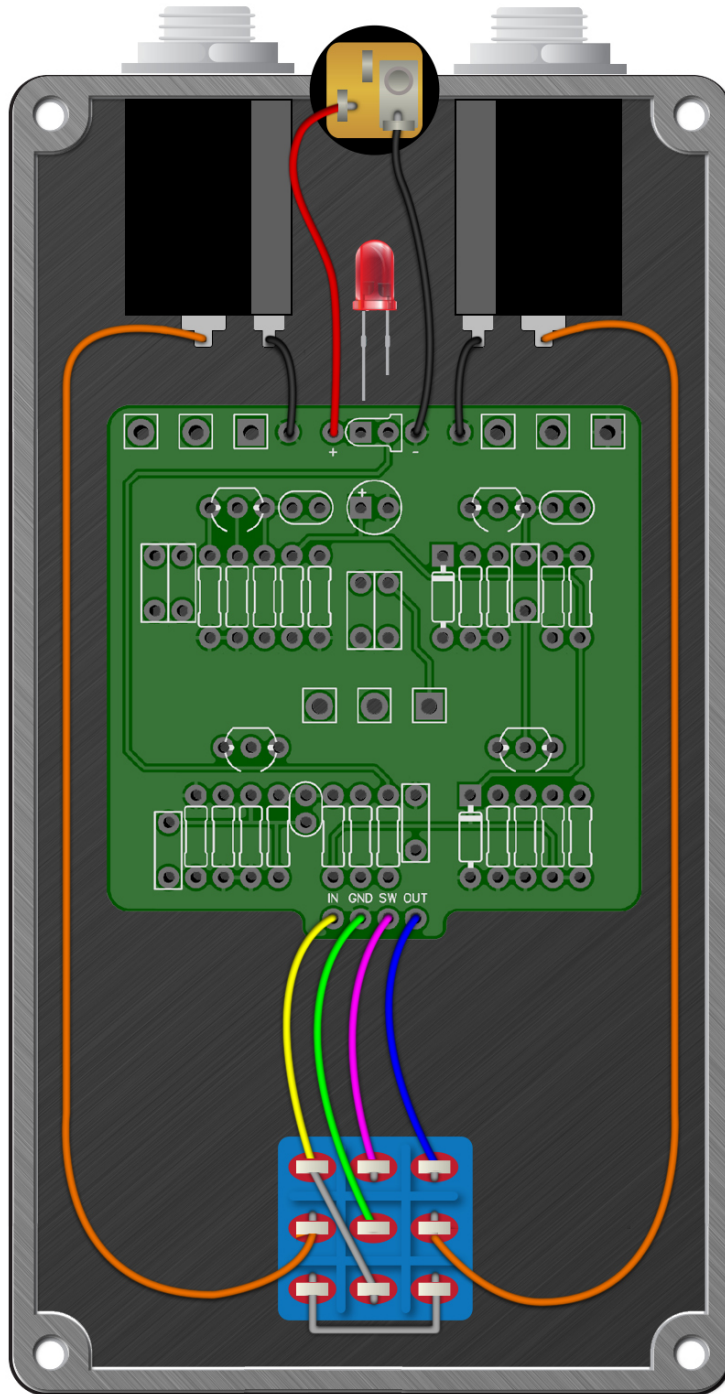
# Dark Esbat Boost

Schematic Diagram



# Dark Esbat Boost

Wiring Diagram



# Dark Esbat Boost

Drill Template  
125B Enclosure

