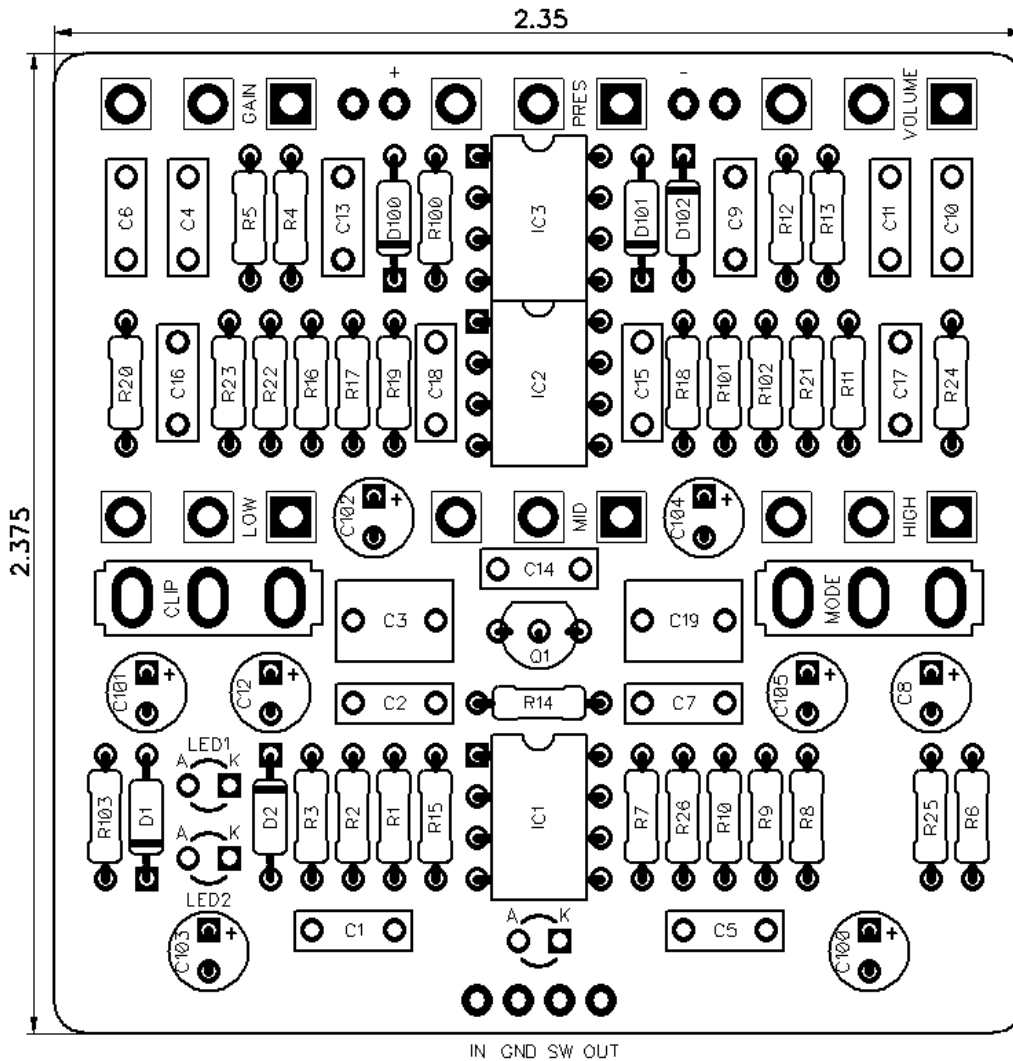


# PedalPCB

## Crunch Captain Deluxe

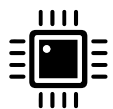
Revised 2/27/23



## CONTROLS AND FEATURES

- Volume
- Presence
- Gain
- High
- Mid
- Low
- Clipping (toggle switch)
- Mode (toggle switch)

All trademarks and registered trademarks are the property of their respective owners. The company, product, and service names used in this web site are for identification purposes only. Use of these names, logos, and brands does not imply endorsement.



LOCATION	VALUE	TYPE	NOTES
R1	8M2	Resistor, 1/4W	
R2	470K	Resistor, 1/4W	
R3	1K	Resistor, 1/4W	
R4	1K	Resistor, 1/4W	
R5	10K	Resistor, 1/4W	
R6	2K2	Resistor, 1/4W	
R7	22K	Resistor, 1/4W	
R8	22K	Resistor, 1/4W	
R9	220K	Resistor, 1/4W	
R10	1M	Resistor, 1/4W	
R11	470R	Resistor, 1/4W	
R12	10K	Resistor, 1/4W	
R13	10K	Resistor, 1/4W	
R14	470K	Resistor, 1/4W	
R15	10K	Resistor, 1/4W	
R16	4K7	Resistor, 1/4W	
R17	220K	Resistor, 1/4W	
R18	4K7	Resistor, 1/4W	
R19	220K	Resistor, 1/4W	
R20	22K	Resistor, 1/4W	
R21	10K	Resistor, 1/4W	
R22	22K	Resistor, 1/4W	
R23	4K7	Resistor, 1/4W	
R24	10K	Resistor, 1/4W	
R25	10K	Resistor, 1/4W	
R26	1K	Resistor, 1/4W	
R100	39R	Resistor, 1/4W	
R101	10K	Resistor, 1/4W	
R102	10K	Resistor, 1/4W	
R103	4K7	Resistor, 1/4W	
C1	22n	Film capacitor, 7.2 x 2.5mm	
C2	220p	Ceramic capacitor	
C3	220n	Film capacitor, 7.2 x 5.0mm	
C4	100p	Ceramic capacitor	
C5	10n	Film capacitor, 7.2 x 2.5mm	
C6	100n	Film capacitor, 7.2 x 2.5mm	
C7	100p	Ceramic capacitor	
C8	2u2	Electrolytic capacitor, 5mm	
C9	22n	Film capacitor, 7.2 x 2.5mm	
C10	22n	Film capacitor, 7.2 x 2.5mm	
C11	47n	Film capacitor, 7.2 x 2.5mm	
C12	10u	Electrolytic capacitor, 5mm	
C13	15n	Film capacitor, 7.2 x 2.5mm	
C14	3n3	Film capacitor, 7.2 x 2.5mm	
C15	56p	Ceramic capacitor	
C16	15n	Film capacitor, 7.2 x 2.5mm	
C17	3n3	Film capacitor, 7.2 x 2.5mm	



# Crunch Captain Deluxe

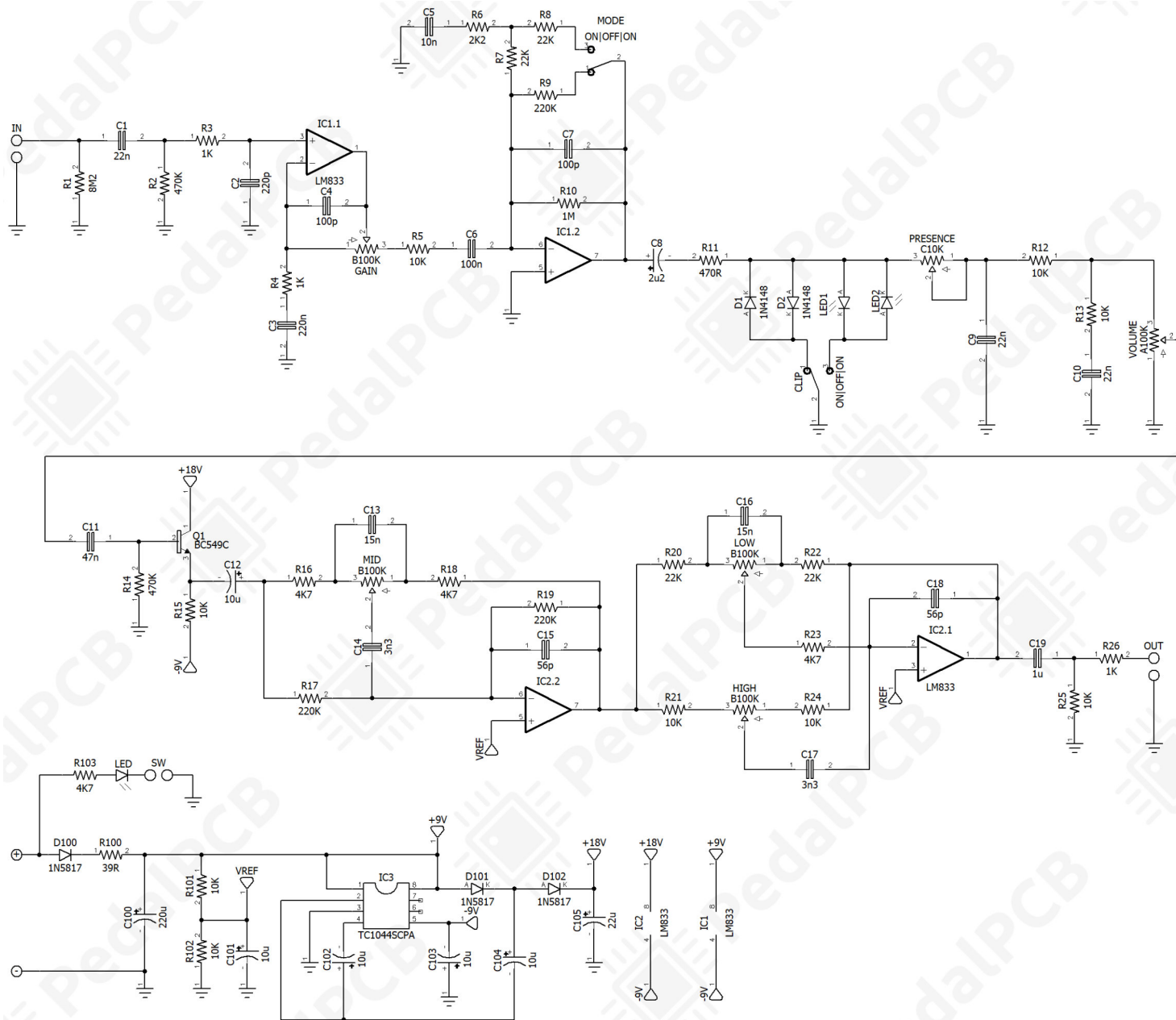
## Parts List (Page 2 of 2)

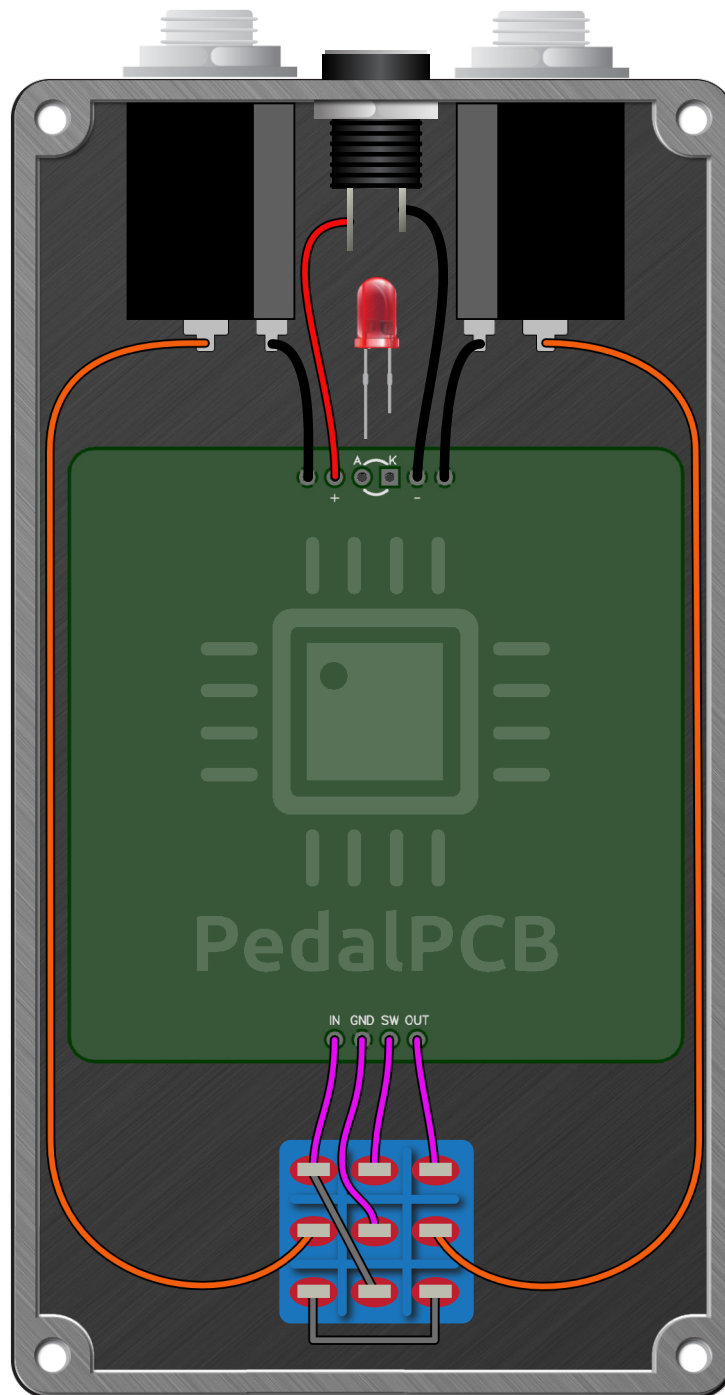
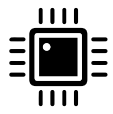
[illegible]

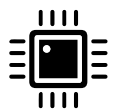


# Crunch Captain Deluxe

### Schematic Diagram







**PedalPCB**

# Crunch Captain Deluxe

Drill Template  
125B Enclosure

