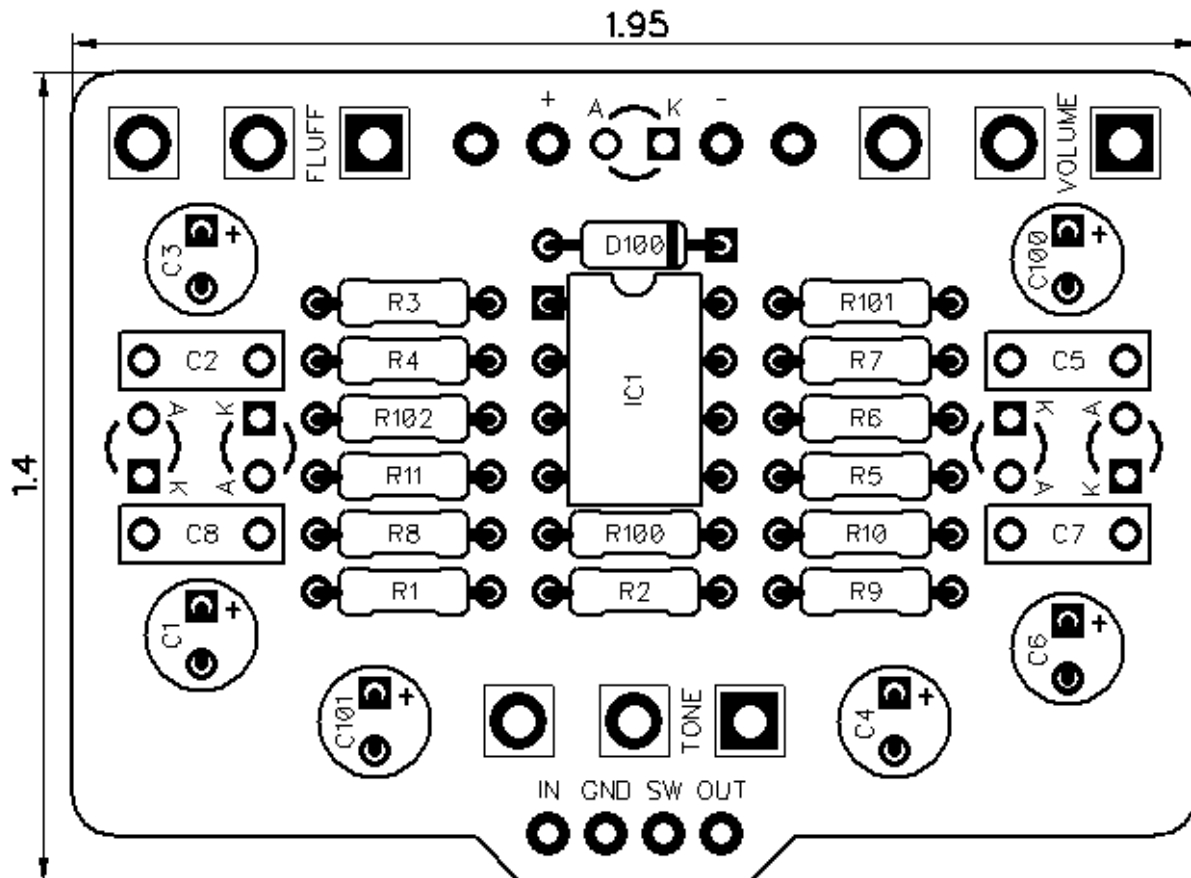




# PedalPCB

## Cream Pie Fuzz

Revision 12.28.19



### Controls

- Volume
- Tone
- Fluff

All trademarks and registered trademarks are the property of their respective owners. The company, product, and service names used in this web site are for identification purposes only. Use of these names, logos, and brands does not imply endorsement.

# Cream Pie Fuzz

## Parts List

**RESISTORS (1/4W)**

R1 33K  
R2 10K  
R3 1M  
R4 1K5  
R5 2K2  
R6 100K  
R7 1M  
R8 10K  
R9 20K  
R10 2K2  
R11 47K  
R100 4K7  
R101 33K  
R102 33K

**CAPACITORS**

C1 1u  
C2 100p  
C3 10u  
C4 10u  
C5 390p  
C6 1u  
C7 150n  
C8 4n7  
C100 100u  
C101 10u

**INTEGRATED CIRCUITS**

IC1 JRC4558

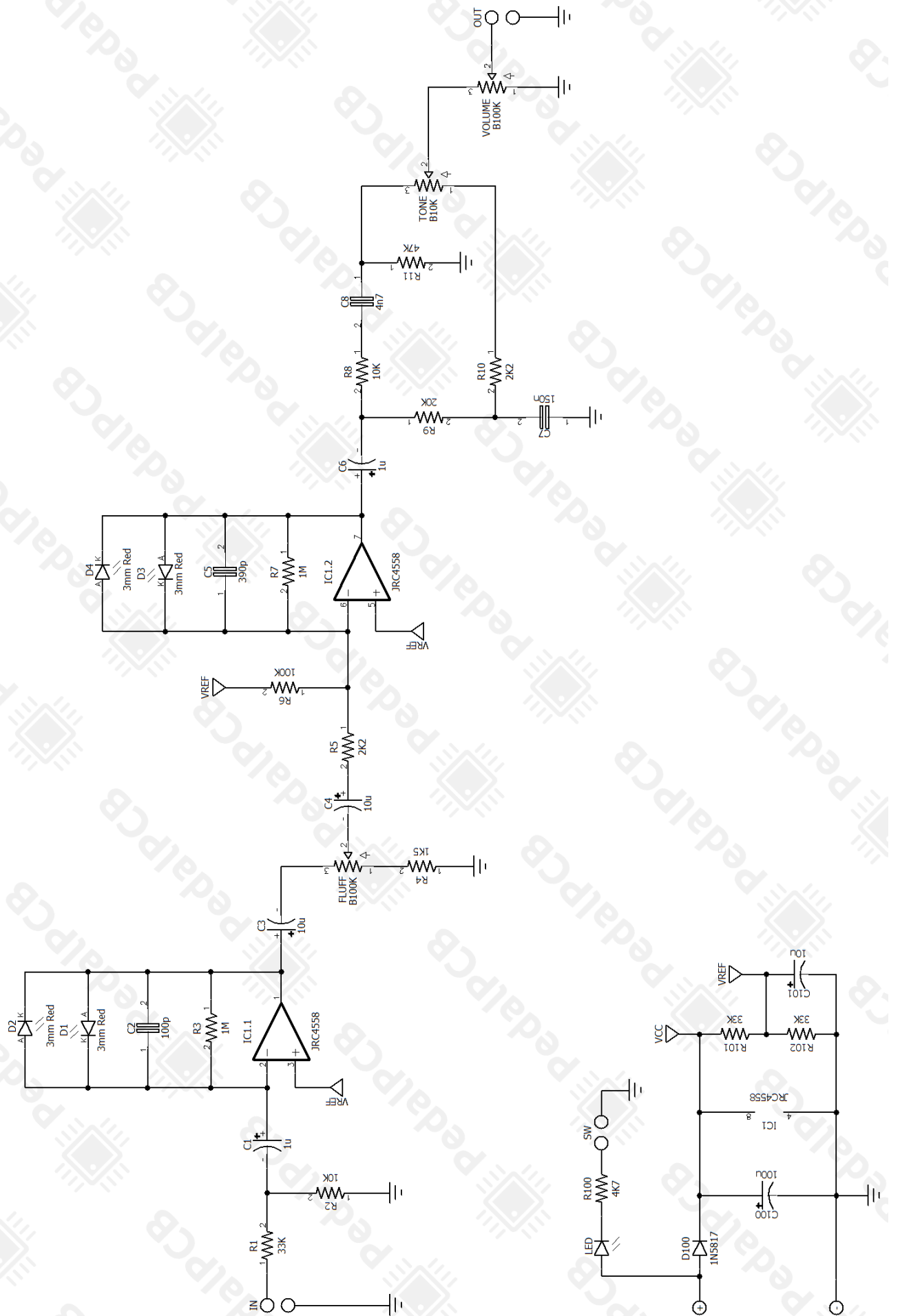
**DIODES**

D1 3mm Red  
D2 3mm Red  
D3 3mm Red  
D4 3mm Red  
D100 1N5817

**POTENTIOMETERS**

VOLUME B100K  
TONE B10K  
FLUFF B100K

# Cream Pie Fuzz



# Cream Pie Fuzz

Wiring Diagram



# Cream Pie Fuzz

Drill Template  
125B Enclosure

