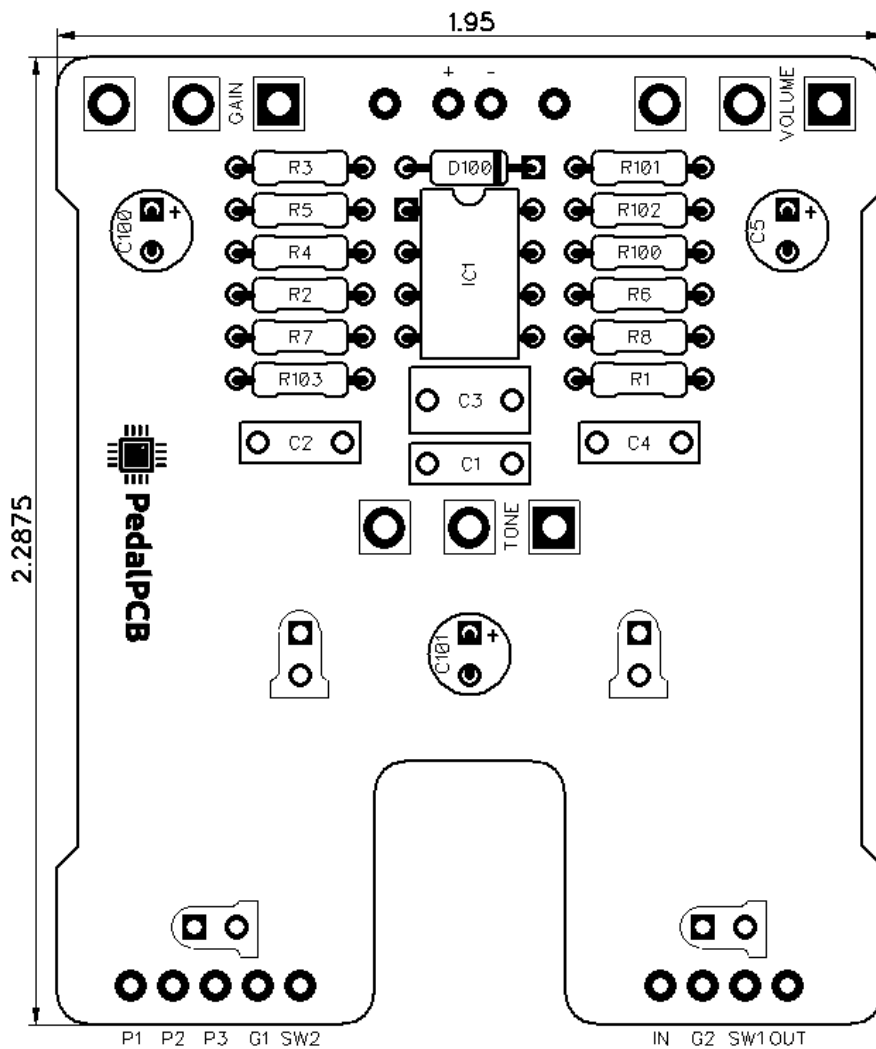




# PedalPCB

## Counterweight

Revision 05.19.19



### Controls

- **Volume**
- **Tone**
- **Gain**
- **Boost** (Footswitch)
- **Bypass** (Footswitch)

All trademarks and registered trademarks are the property of their respective owners. The company, product, and service names used in this web site are for identification purposes only. Use of these names, logos, and brands does not imply endorsement.

# Counterweight

## Parts List

**RESISTORS (1/4W)**

R1 1M  
R2 470K  
R3 150K  
R4 2K  
R5 7K15  
R6 1K  
R7 150K  
R8 33K  
R100 4K7  
R101 10K  
R102 10K  
R103 4K7

**CAPACITORS**

C1 47n  
C2 100p  
C3 220n  
C4 10n  
C5 10u  
C100 100u  
C101 47u

**INTEGRATED CIRCUITS**

IC1 NE5532

**DIODES**

D1 3mm Red LED  
D2 3mm Red LED  
D100 1N5817

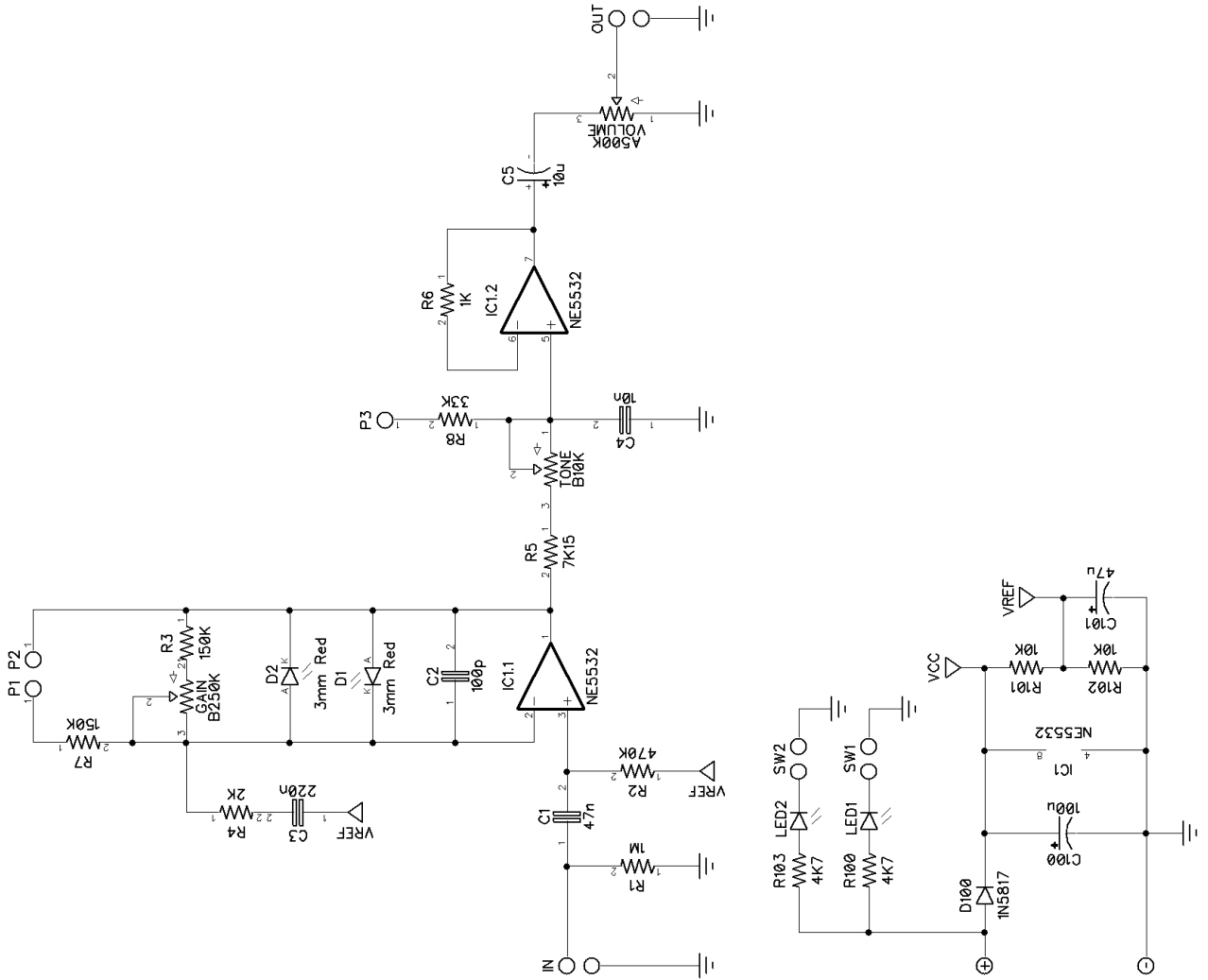
**POTENTIOMETERS**

VOLUME A500K  
TONE B10K  
GAIN B250K

**FOOTSWITCHES**

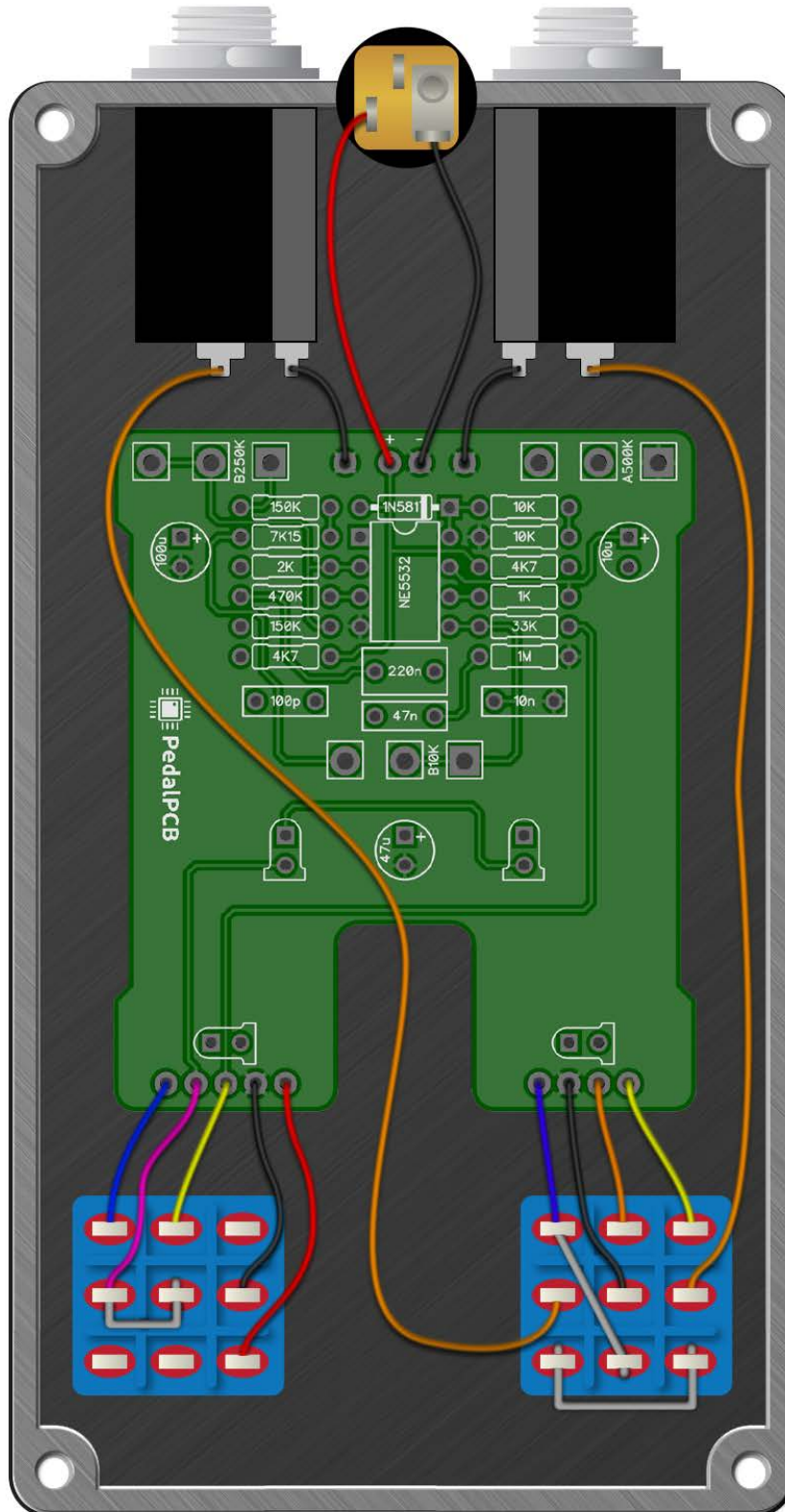
SW1 3PDT Latching Footswitch  
SW2 3PDT Latching Footswitch

# Counterweight



# Counterweight

Wiring Diagram



# Counterweight

Drill Template  
125B enclosure with top mounted jacks

