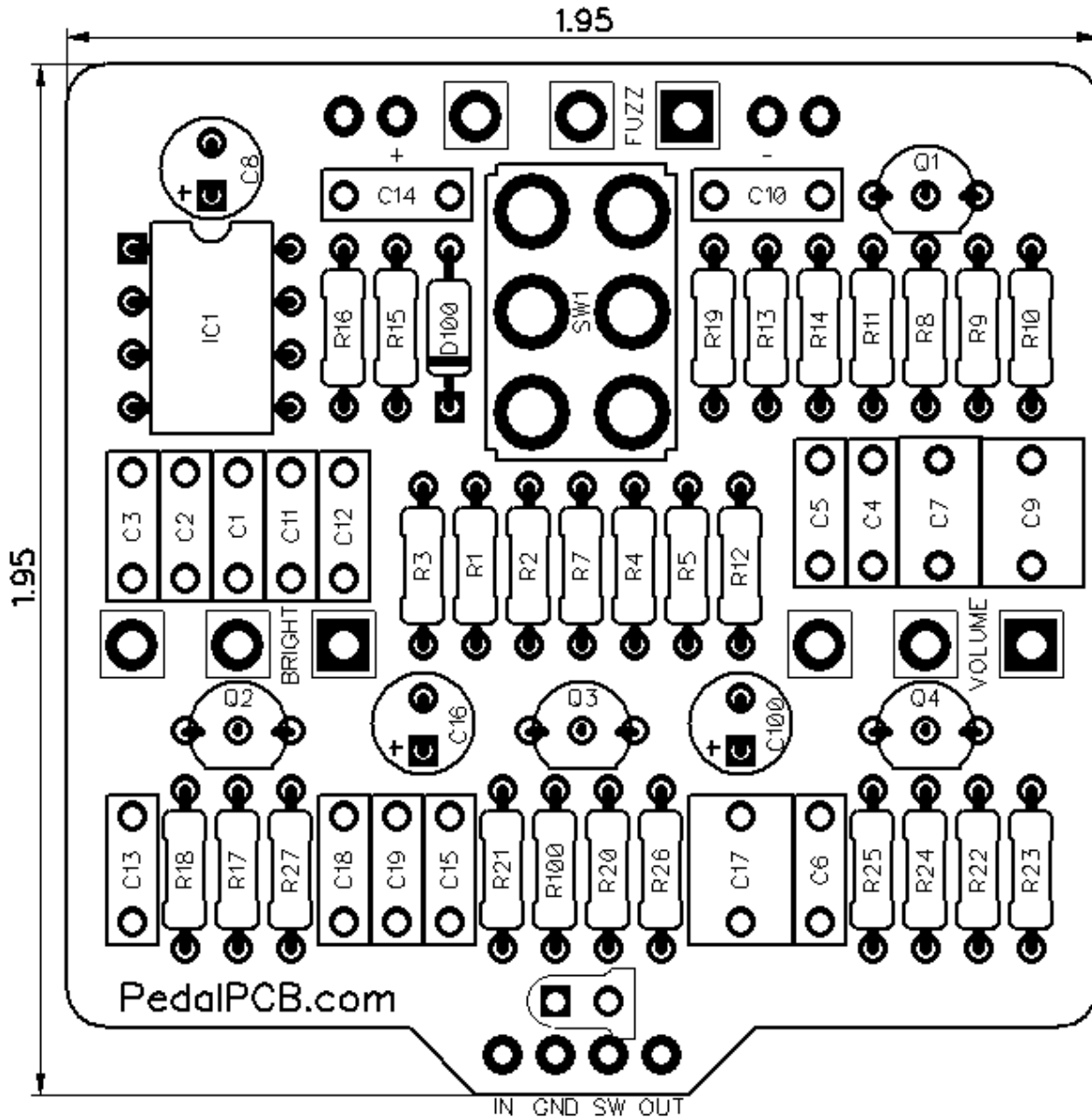


# PedalPCB

## Corduroy Fuzz

Revision 05/26.18



All trademarks and registered trademarks are the property of their respective owners. The company, product, and service names used in this web site are for identification purposes only. Use of these names, logos, and brands does not imply endorsement.

Copyright © 2018 - PedalPCB.com



# Corduroy Fuzz

## Parts List

### RESISTORS (1/4W)

R1 1K  
R2 1K  
R3 1M  
R4 3K3  
R5 2K2  
R7 1M  
R8 100K  
R9 1M  
R10 20K  
R11 1K  
R12 10K  
R13 82K  
R14 20K  
R15 1K  
R16 1M  
R17 1K  
R18 15K\*  
R19 1K  
R20 1K  
R21 15K\*  
R22 10K  
R23 100K  
R24 1K  
R25 15K\*  
R26 15K  
R27 15K  
R100 4K7

### CAPACITORS

C1 220n  
C2 1n  
C3 100n  
C4 220n  
C5 100n  
C6 100p  
C7 470n  
C8 47u  
C9 1u  
C10 4n7  
C11 100p  
C12 100n  
C13 2n2  
C14 100p  
C15 22n  
C16 47u  
C17 1u  
C18 2n2  
C19 10n  
C100 220u

### SEMICONDUCTORS

Q1 2N5089  
Q2 J201  
Q3 J201  
Q4 J201

IC1 LM386

D100 1N5817

### POTENTIOMETERS

VOLUME A100K  
FUZZ A500K  
BRIGHT B25K

### SWITCHES

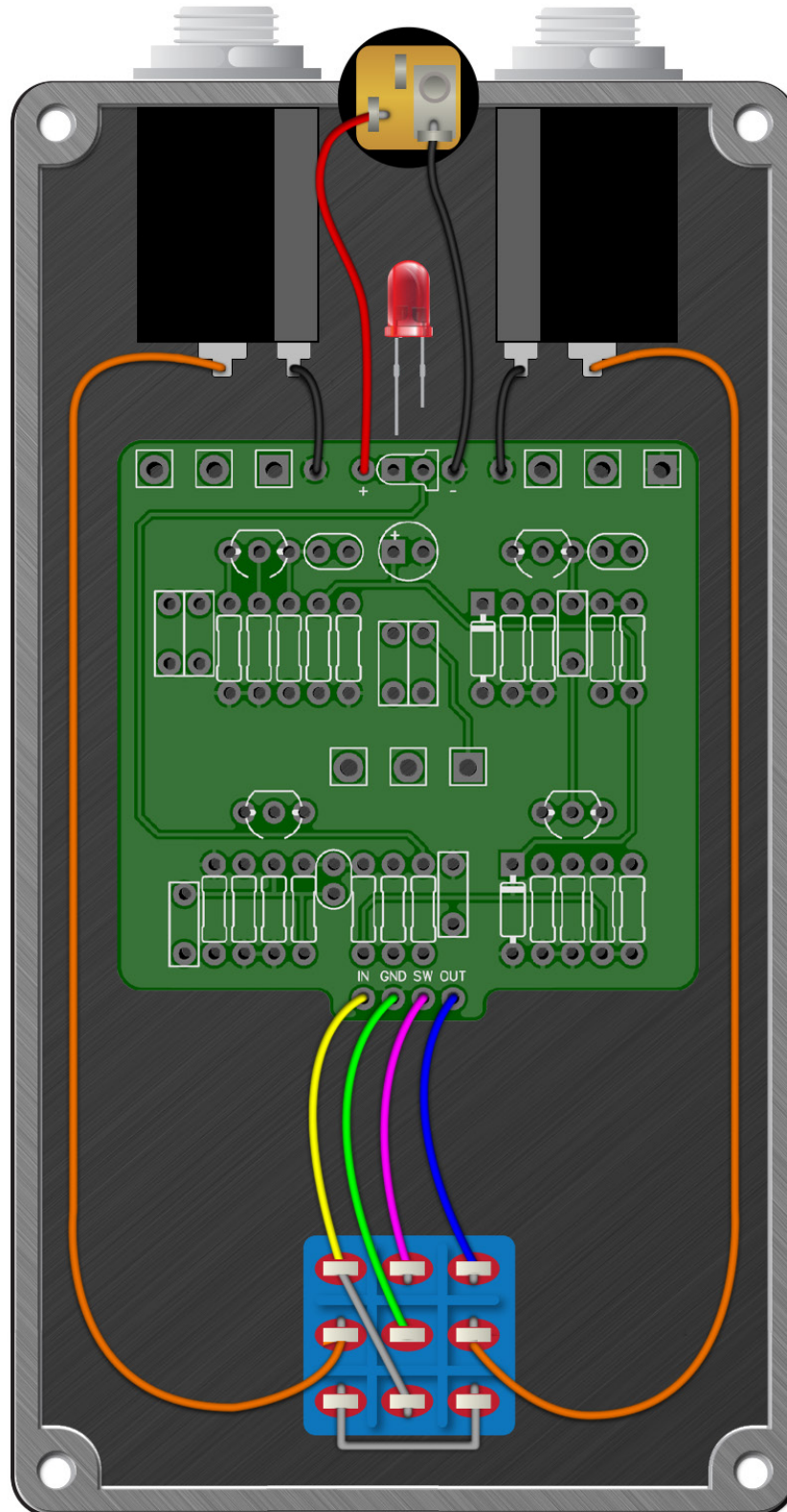
SW1 DPDT Latching (On / On)

*Common offboard components (enclosure, footswitch, jacks, etc) are not listed*



# PedalPCB

## Wiring Diagram





# Corduroy Fuzz Drill Template

4S125B enclosure with top mounted jacks

