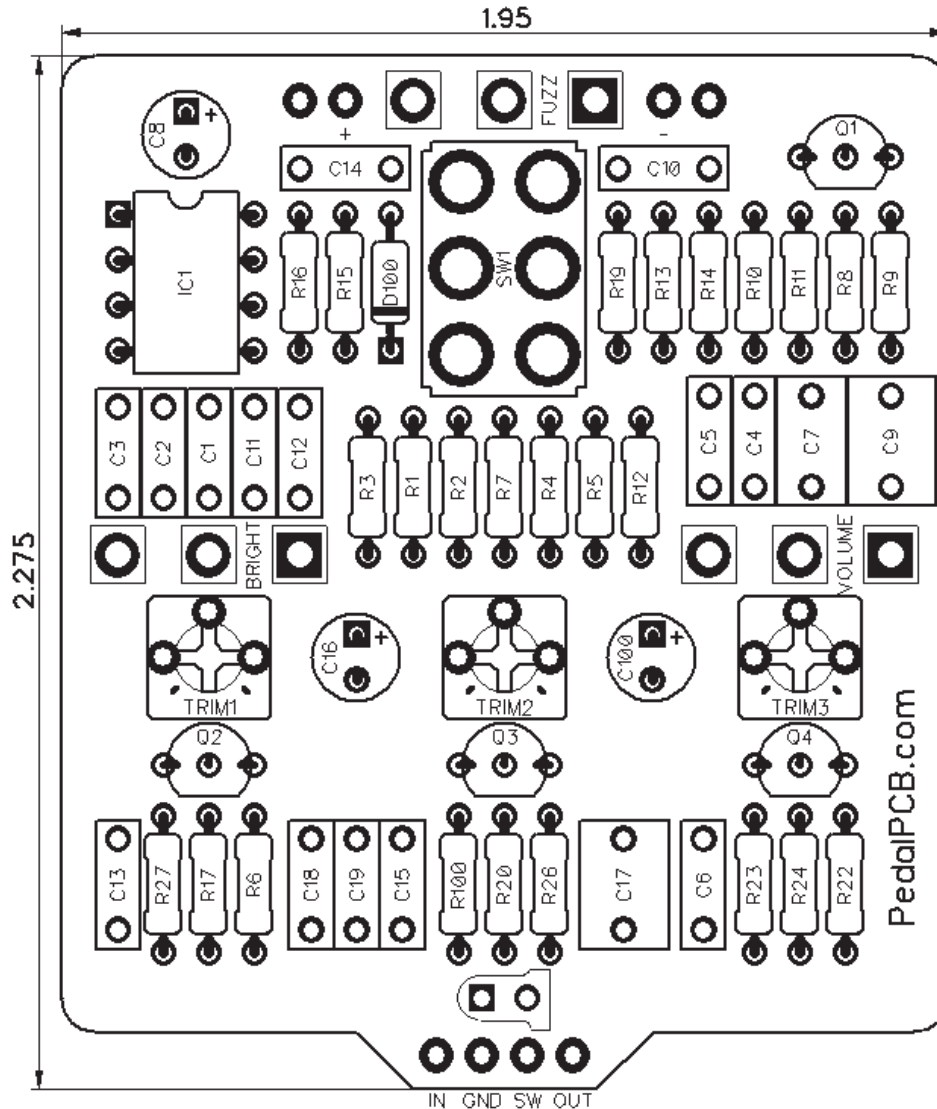




PedalPCB

Corduroy Fuzz

Revision 01.27.19



Controls

- **Volume**
- **Fuzz**
- **Brightness**
- **Voice (Toggle Switch) - Big / Tight**

All trademarks and registered trademarks are the property of their respective owners. The company, product, and service names used in this web site are for identification purposes only. Use of these names, logos, and brands does not imply endorsement.

Corduroy Fuzz

Parts List

RESISTORS (1/4W)

R1 1K
 R2 1K
 R3 1M
 R4 3K3
 R5 2K2
 R6 1M
 R7 1M
 R8 100K
 R9 1M
 R10 20K
 R11 1K
 R12 10K
 R13 82K
 R14 20K
 R15 1K
 R16 1M
 R17 1K
 R19 1K
 R20 1K
 R22 10K
 R23 100K
 R24 1K
 R26 15K
 R27 15K
 R100 4K7

CAPACITORS

C1 220n
 C2 1n
 C3 100n
 C4 220n
 C5 100n
 C6 100p
 C7 470n
 C8 47u
 C9 1u
 C10 4n7
 C11 100p
 C12 100n
 C13 2n2
 C14 100p
 C15 22n
 C16 47u
 C17 1u
 C18 2n2
 C19 10n
 C100 220u

TRANSISTORS

Q1 2N5089
 Q2 J201
 Q3 J201
 Q4 J201

INTEGRATED CIRCUITS

IC1 LM386

DIODES

D100 1N5817

POTENTIOMETERS

VOLUME A100K
 BRIGHT B25K
 FUZZ A500K

TRIM POTS (3362P)

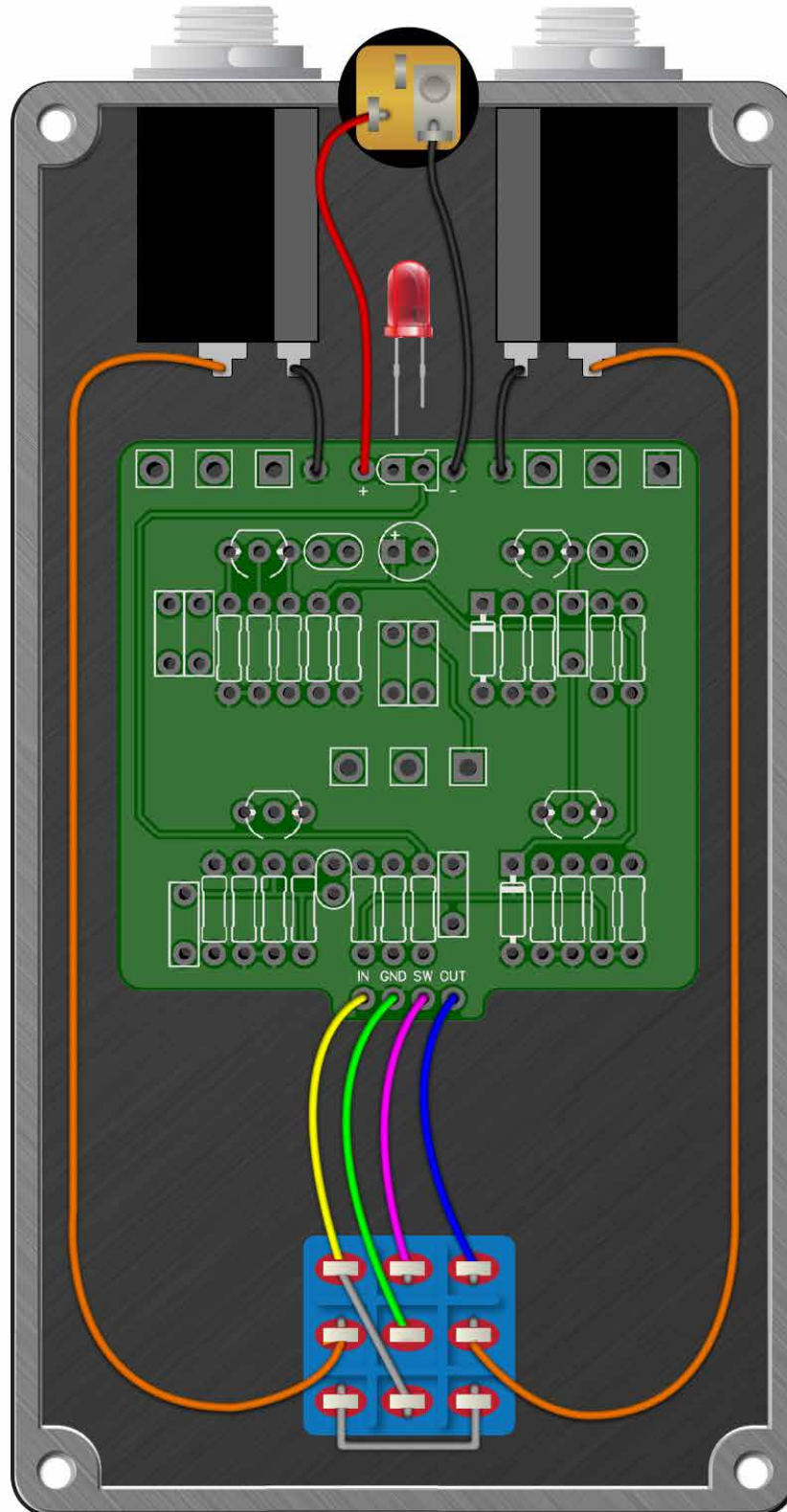
TRIM1 50K
 TRIM2 50K
 TRIM3 50K

SWITCHES

SW1 DPDT On/On

Corduroy Fuzz

Wiring Diagram



Corduroy Fuzz

Drill Template
125B enclosure with top mounted jacks

