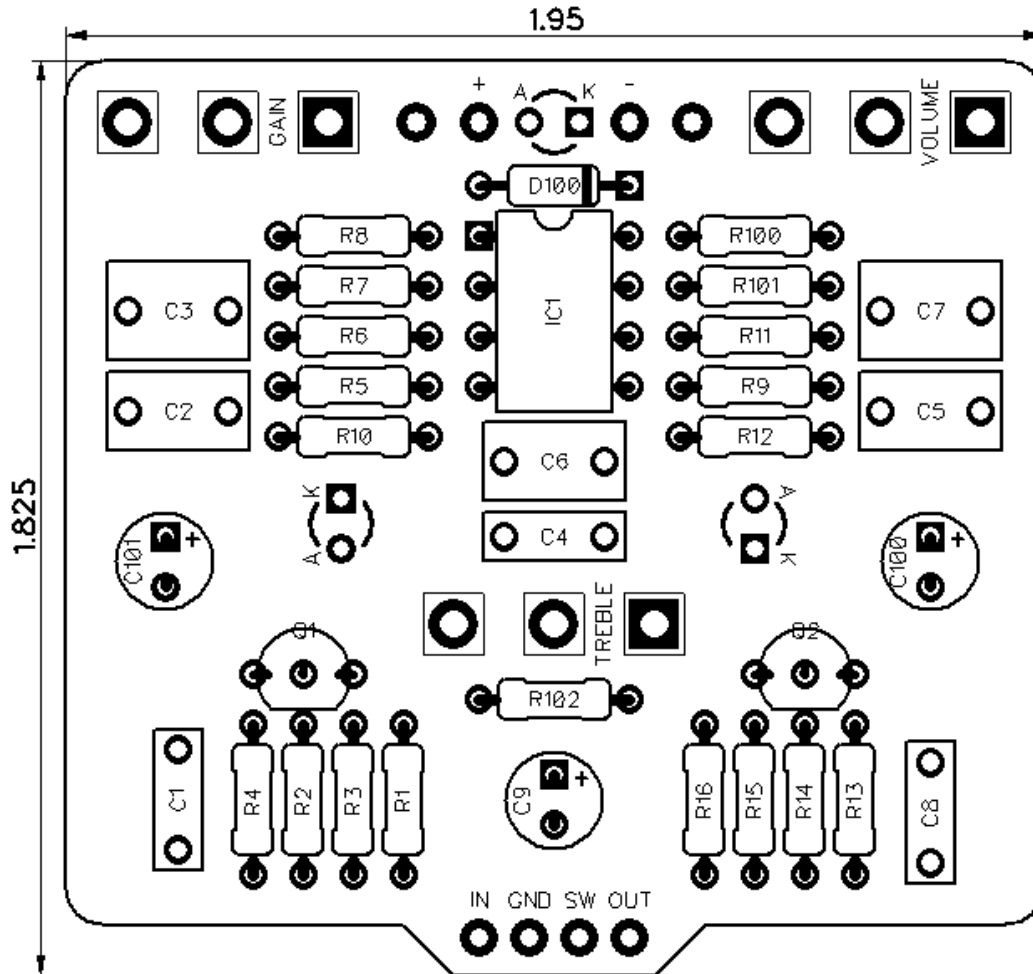


# PedalPCB

## Contact Overdrive

Revision 09.01.19



### Controls

- Volume
- Gain
- Treble

All trademarks and registered trademarks are the property of their respective owners. The company, product, and service names used in this web site are for identification purposes only. Use of these names, logos, and brands does not imply endorsement.

# Contact Overdrive

## Parts List

### RESISTORS (1/4W)

R1 1M  
R2 1K  
R3 510K  
R4 10K  
R5 1K  
R6 10K  
R7 10K  
R8 1K  
R9 10K  
R10 220R  
R11 1K  
R12 1K  
R13 510K  
R14 10K  
R15 100R  
R16 10K  
R100 10K  
R101 10K  
R102 4K7

### CAPACITORS

C1 22n  
C2 220n  
C3 1u  
C4 56p  
C5 220n  
C6 220n  
C7 1u  
C8 100n  
C9 10u  
C100 100u  
C101 47u

### INTEGRATED CIRCUITS

IC1 NE5532

### TRANSISTORS

Q1 2SC1815  
Q2 2SC1815

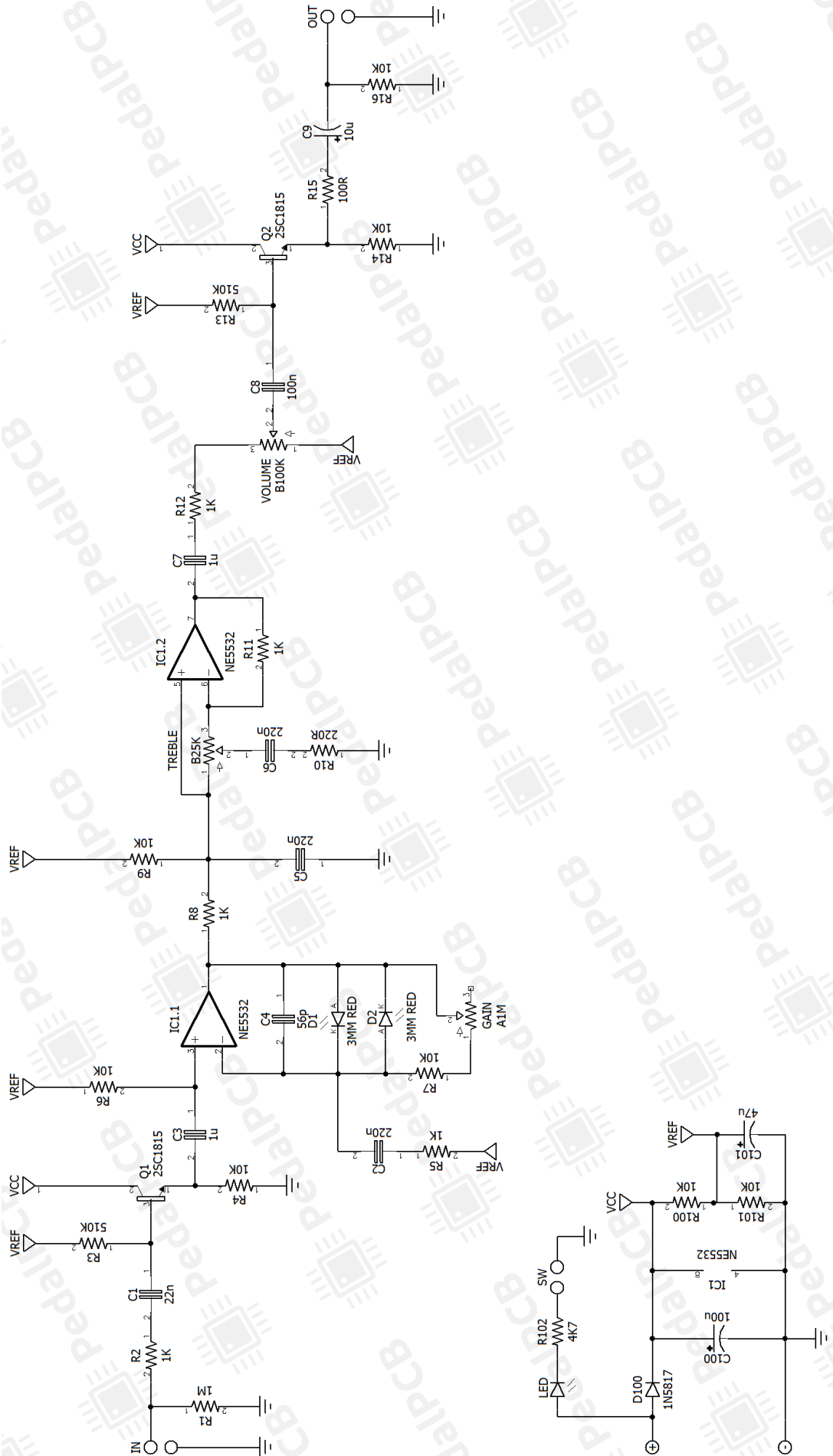
### DIODES

D1 3mm Red LED  
D2 3mm Red LED  
D100 1N5817

### POTENTIOMETERS

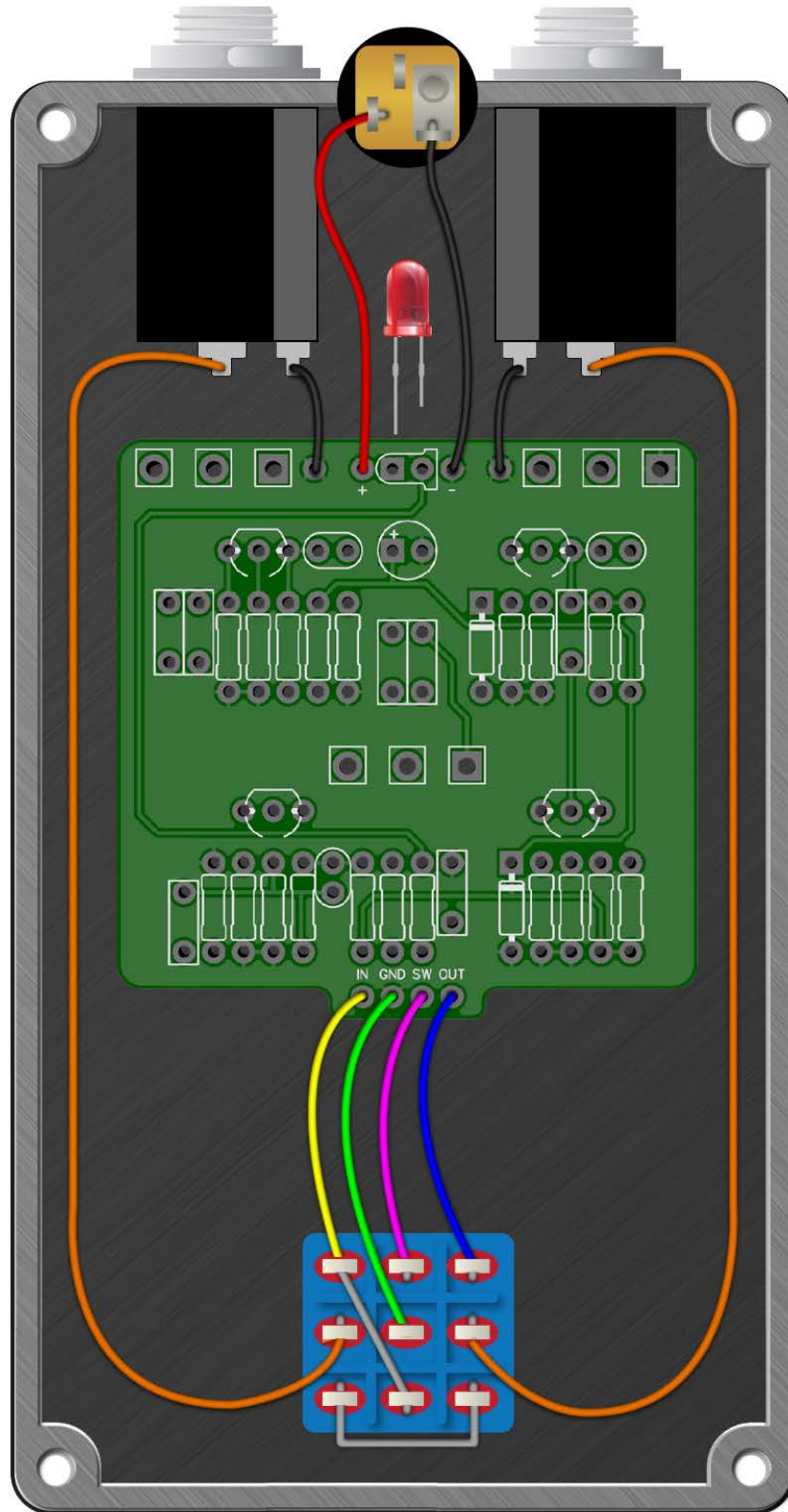
VOLUME B100K  
TREBLE B25K  
GAIN A1M

# Contact Overdrive



# Contact Overdrive

Wiring Diagram



# Contact Overdrive

Drill Template  
125B enclosure with top mounted jacks

