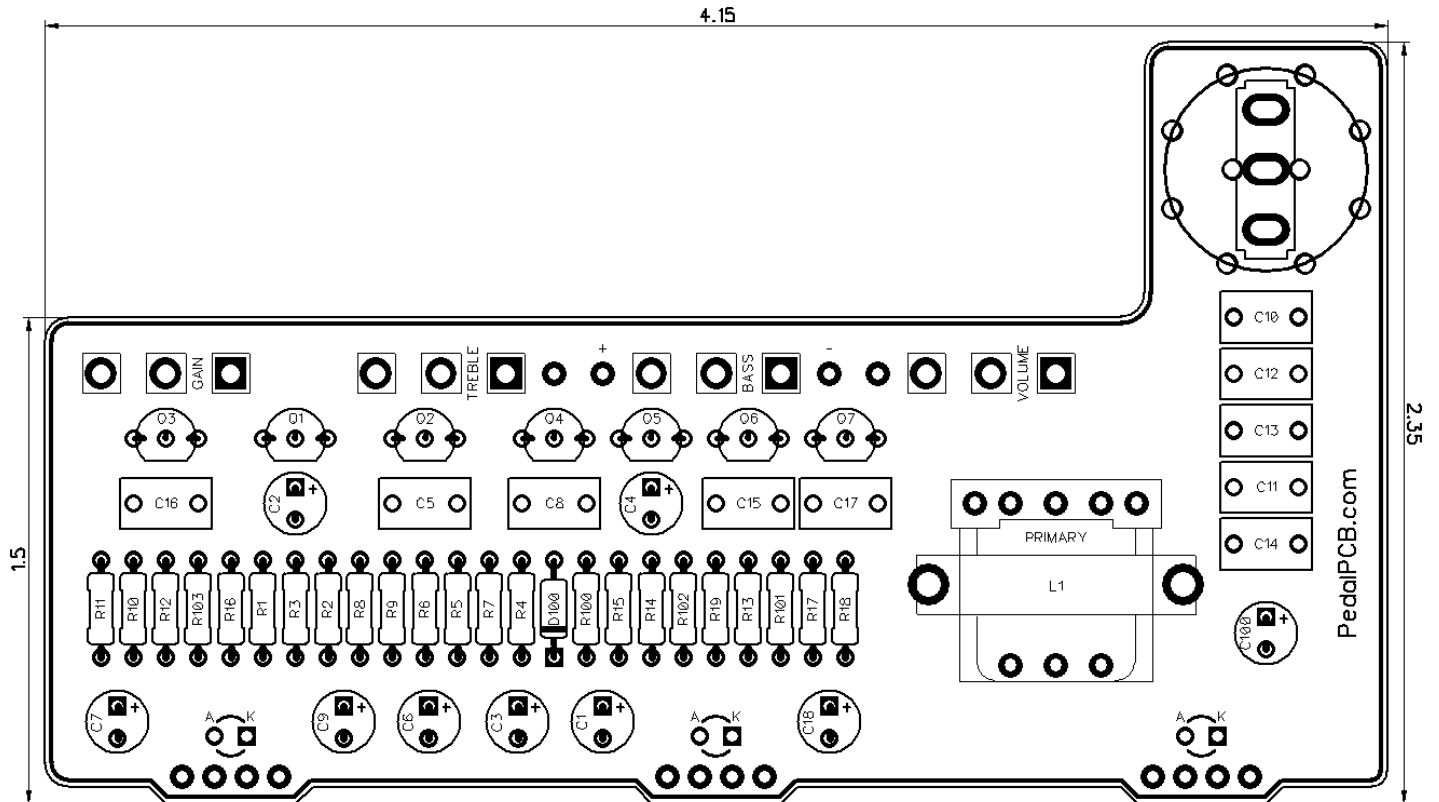


PedalPCB

Conqueror Supreme

Revised 6/21/20



CONTROLS AND FEATURES

- Gain
- Treble
- Bass
- Volume
- MRB Frequency (*Rotary or Toggle switch*)

FOOTSWITCHES

- Mid-Range Boost
- Active/Bypass
- Distortion

All trademarks and registered trademarks are the property of their respective owners. The company, product, and service names used in this web site are for identification purposes only. Use of these names, logos, and brands does not imply endorsement.

LOCATION	VALUE	TYPE	NOTES
R1	100K	Resistor, 1/4W	
R2	220K	Resistor, 1/4W	
R3	18K	Resistor, 1/4W	
R4	22K	Resistor, 1/4W	
R5	20K	Resistor, 1/4W	
R6	470R	Resistor, 1/4W	
R7	330R	Resistor, 1/4W	
R8	1K	Resistor, 1/4W	
R9	10K	Resistor, 1/4W	
R10	10K	Resistor, 1/4W	
R11	18K	Resistor, 1/4W	
R12	15K	Resistor, 1/4W	
R13	1K5	Resistor, 1/4W	
R14	220R	Resistor, 1/4W	
R15	220R	Resistor, 1/4W	
R16	10K	Resistor, 1/4W	
R17	47K	Resistor, 1/4W	
R18	4K7	Resistor, 1/4W	
R19	2K2	Resistor, 1/4W	
R100	220R	Resistor, 1/4W	
R101	4K7	Resistor, 1/4W	
R102	4K7	Resistor, 1/4W	
R103	4K7	Resistor, 1/4W	
C1	10u	Electrolytic capacitor, 5mm	
C2	10u	Electrolytic capacitor, 5mm	
C3	47u	Electrolytic capacitor, 5mm	
C4	10u	Electrolytic capacitor, 5mm	
C5	68n	Film capacitor, 7.2 x 2.5mm	
C6	47u	Electrolytic capacitor, 5mm	
C7	47u	Electrolytic capacitor, 5mm	
C8	100n	Film capacitor, 7.2 x 2.5mm	
C9	10u	Electrolytic capacitor, 5mm	
C10	**	**	** See Below **
C11	**	**	** See Below **
C12	**	**	** See Below **
C13	**	**	** See Below **
C14	**	**	** See Below **
C15	100n	Film capacitor, 7.2 x 2.5mm	
C16	10n	Film capacitor, 7.2 x 2.5mm	
C17	220n	Film capacitor, 7.2 x 5mm	
C18	220u	Electrolytic capacitor, 5mm	
C100	470u	Electrolytic capacitor, 5mm	
D100	1N5817	Schottky diode, DO-41	

Continued on next page..

LOCATION	VALUE	TYPE	NOTES
Q1	BC548	BJT transistor, NPN TO-92	
Q2	BC548	BJT transistor, NPN TO-92	
Q3	BC548	BJT transistor, NPN TO-92	
Q4	2N4125	BJT transistor, PNP TO-92	
Q5	2N4125	BJT transistor, PNP TO-92	
Q6	2N4125	BJT transistor, PNP TO-92	
Q7	BC548	BJT transistor, NPN TO-92	
L1	42TM013	500mH Inductor	
BASS	A10K	16mm right-angle PCB mount pot	
GAIN	C5K	16mm right-angle PCB mount pot	
TREBLE	B1K	16mm right-angle PCB mount pot	
VOLUME	A25K	16mm right-angle PCB mount pot	

ROTARY SWITCH

LOCATION	VALUE	TYPE	NOTES
VOICE	2P4T	2P4T 16mm Mini Rotary Switch	Link
C10	220n	Film capacitor, 7.2 x 5mm	
C11	100n	Film capacitor, 7.2 x 2.5mm	
C12	47n	Film capacitor, 7.2 x 2.5mm	
C13	22n	Film capacitor, 7.2 x 2.5mm	
C14	OMIT		

TOGGLE SWITCH

LOCATION	VALUE	TYPE	NOTES
VOICE	SPDT	On/Off/On	
C10	150n	Film capacitor, 7.2 x 2.5mm	
C11	47n	Film capacitor, 7.2 x 2.5mm	
C12	OMIT		
C13	OMIT		
C14	47n	Film capacitor, 7.2 x 2.5mm	

