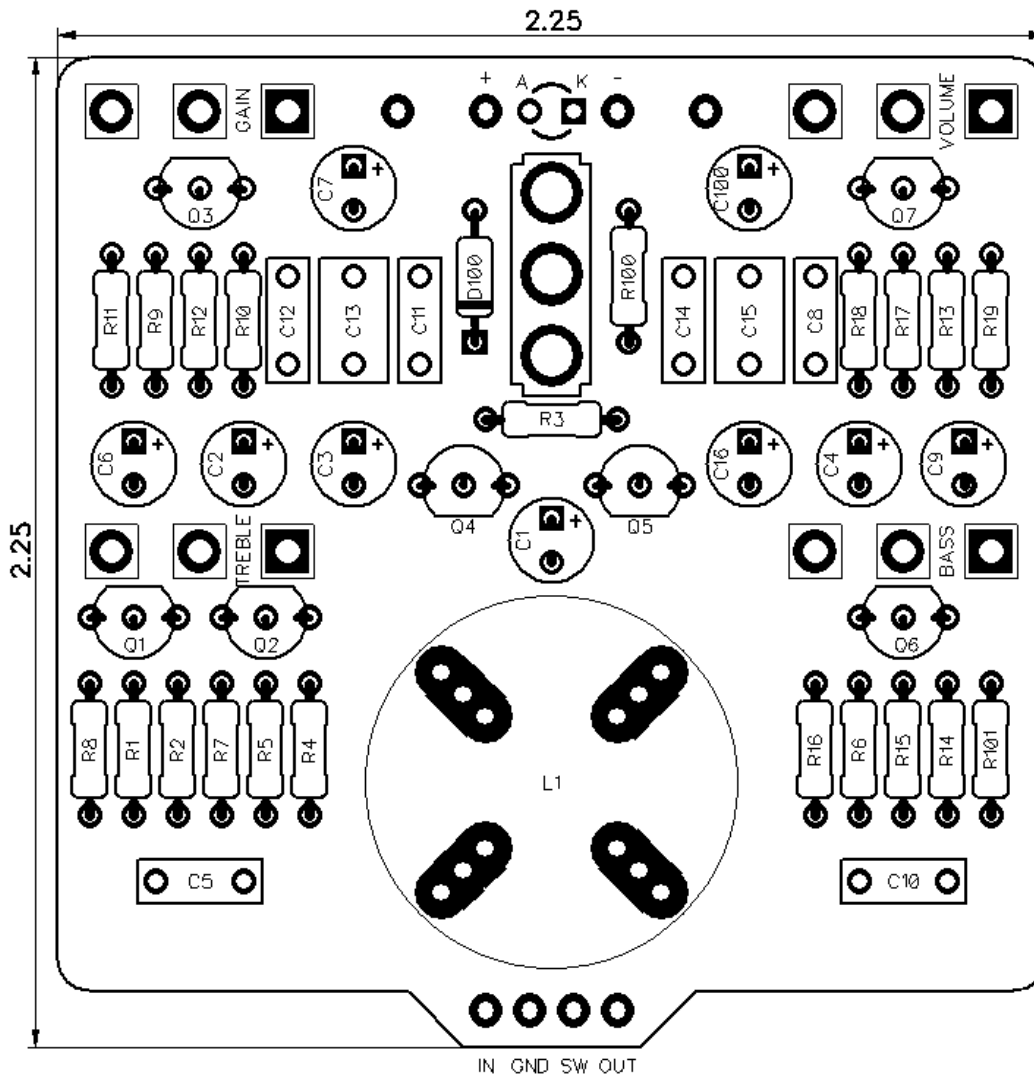




PedalPCB

Conqueror Fuzz

Revision 09.07.19



Controls

- Volume
- Gain
- Treble
- Bass
- Voice (Toggle switch)

All trademarks and registered trademarks are the property of their respective owners. The company, product, and service names used in this web site are for identification purposes only. Use of these names, logos, and brands does not imply endorsement.

Conqueror Fuzz

Parts List

RESISTORS (1/4W)

R1 100K
 R2 220K
 R3 18K
 R4 22K
 R5 20K
 R6 470R
 R7 330R
 R8 1K
 R9 10K
 R10 10K
 R11 18K
 R12 15K
 R13 1K5
 R14 220R
 R15 220R
 R16 10K
 R17 47K
 R18 4K7
 R19 2K2
 R100 220R
 R101 4K7

CAPACITORS

C1 10u
 C2 10u
 C3 47u
 C4 10u
 C5 68n
 C6 47u
 C7 47u
 C8 100n
 C9 10u
 C10 100n
 C11 47n
 C12 47n
 C13 150n
 C14 10n
 C15 220n
 C16 220u
 C100 470u

TRANSISTORS

Q1 BC548
 Q2 BC548
 Q3 BC548
 Q4 2N4125
 Q5 2N4125
 Q6 2N4125
 Q7 BC548

INDUCTORS

L1 500mH (Fasel)

DIODES

D100 1N5817

POTENTIOMETERS

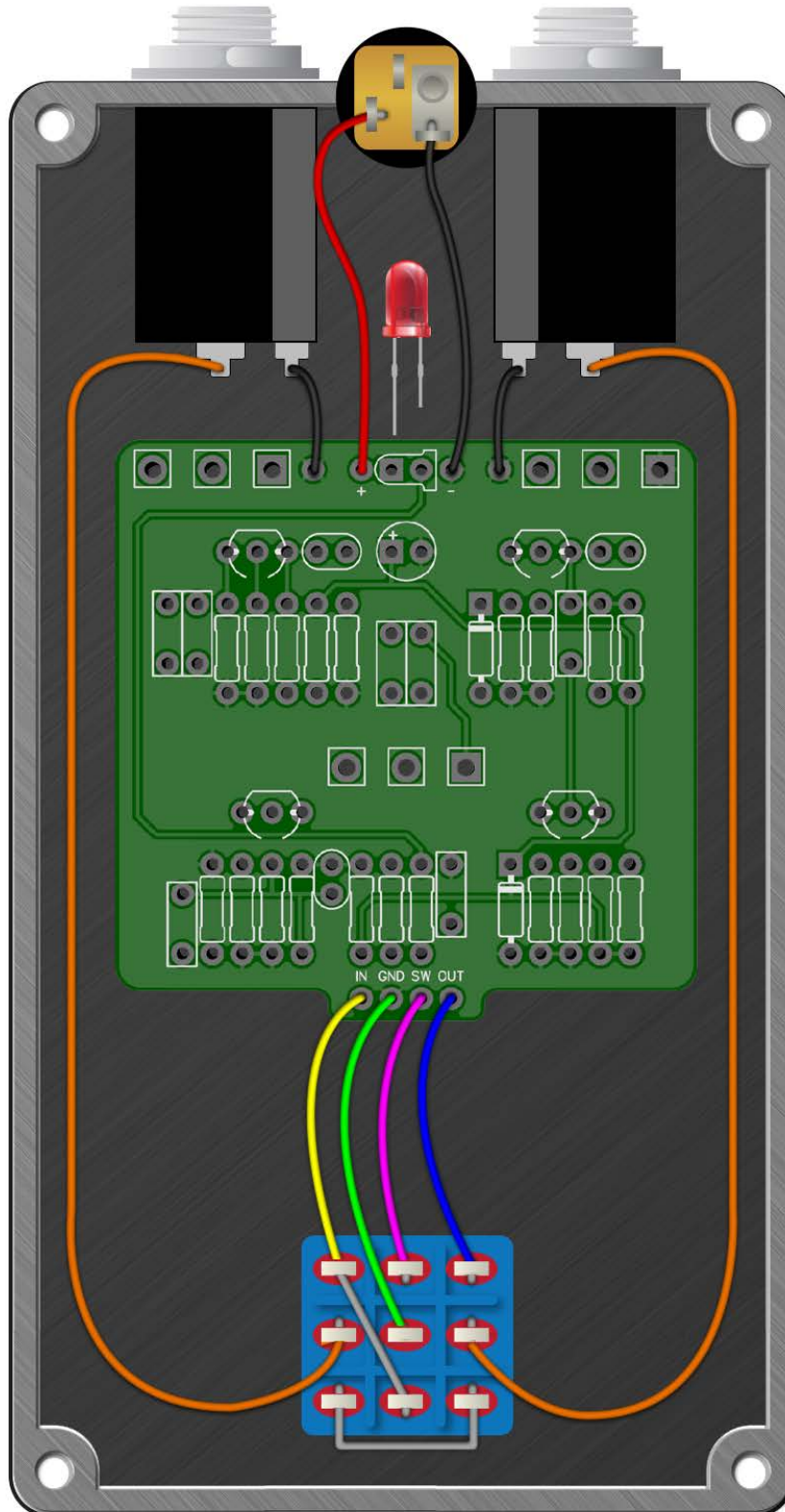
VOLUME A25K
 GAIN C5K
 TREBLE B1K
 BASS A10K

TOGGLE SWITCHES

VOICE SPDT (On/Off/On)

Conqueror Fuzz

Wiring Diagram



Conqueror Fuzz

Drill Template
125B enclosure with top mounted jacks

