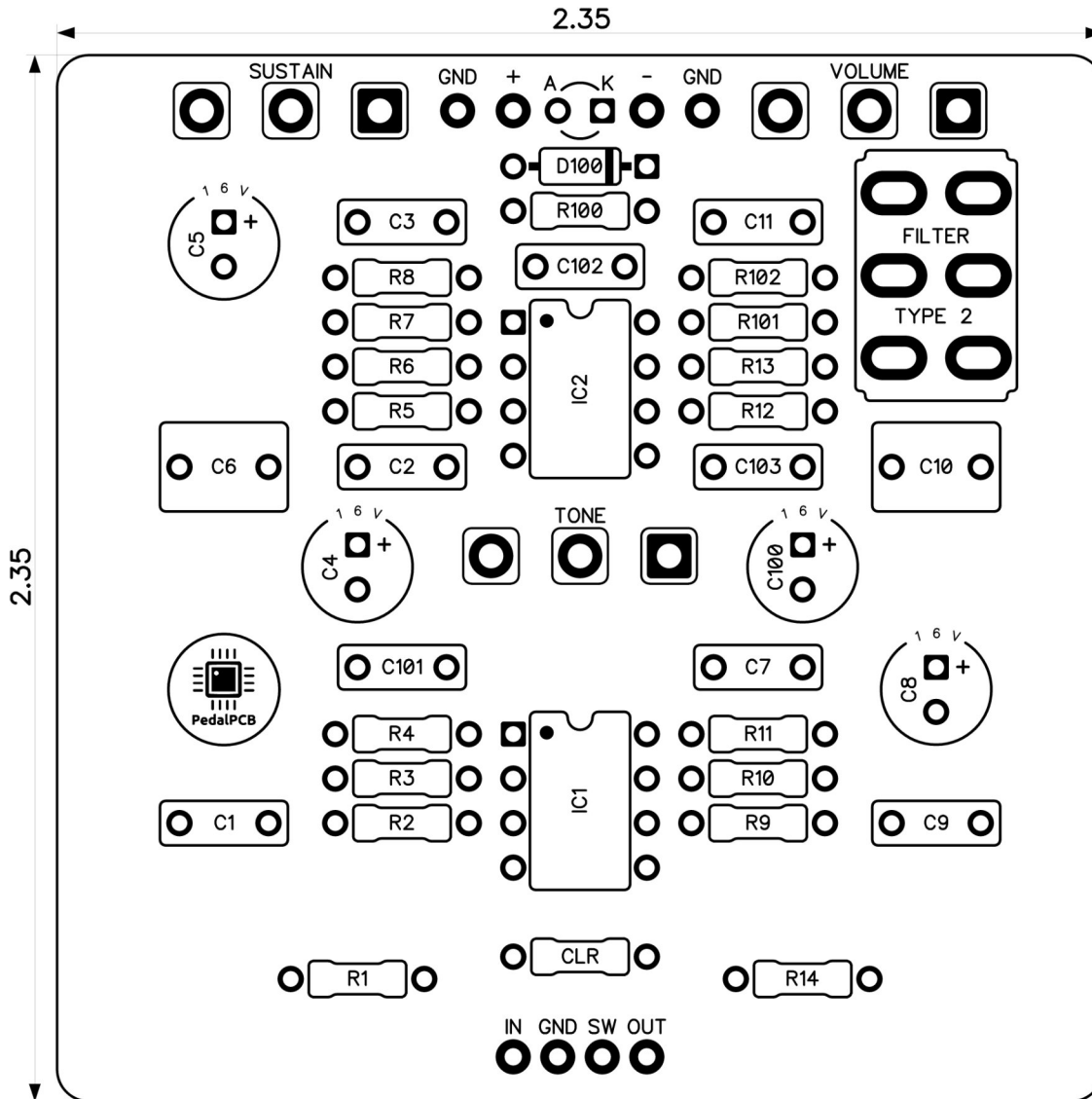




PedalPCB

Cleric Fuzz

Revised 12/9/23



CONTROLS AND FEATURES

- Volume
- Tone
- Sustain
- Filter (Toggle switch)

All trademarks and registered trademarks are the property of their respective owners. The company, product, and service names used in this web site are for identification purposes only. Use of these names, logos, and brands does not imply endorsement.

LOCATION	VALUE	TYPE	NOTES
R1	2M2	Resistor, 1/4W	
R2	56K	Resistor, 1/4W	
R3	330K	Resistor, 1/4W	
R4	10K	Resistor, 1/4W	
R5	47K	Resistor, 1/4W	
R6	62K	Resistor, 1/4W	
R7	560K	Resistor, 1/4W	
R8	47R	Resistor, 1/4W	
R9	8K2	Resistor, 1/4W	
R10	470K	Resistor, 1/4W	
R11	1K5	Resistor, 1/4W	
R12	5K6	Resistor, 1/4W	
R13	1K2	Resistor, 1/4W	
R14	100K	Resistor, 1/4W	
R100	470R	Resistor, 1/4W	
R101	220K	Resistor, 1/4W	
R102	220K	Resistor, 1/4W	
CLR	4K7	Resistor, 1/4W	* LED current limiting resistor
C1	100n	Film capacitor, 7.2 x 2.5mm	
C2	10n	Film capacitor, 7.2 x 2.5mm	
C3	4n7	Film capacitor, 7.2 x 2.5mm	
C4	10u	Electrolytic capacitor, 5mm	
C5	10u	Electrolytic capacitor, 5mm	
C6	560n	Film capacitor, 7.2 x 5.0mm	
C7	330p	Ceramic capacitor	
C8	1u	Electrolytic capacitor, 5mm	
C9	100n	Film capacitor, 7.2 x 2.5mm	
C10	220n	Film capacitor, 7.2 x 5.0mm	
C11	3n3	Film capacitor, 7.2 x 2.5mm	
C100	100u	Electrolytic capacitor, 5mm	
C101	100n	Film capacitor, 7.2 x 2.5mm	
C102	100n	Film capacitor, 7.2 x 2.5mm	
C103	100n	Film capacitor, 7.2 x 2.5mm	
D100	1N5817	Schottky diode, DO-41	
IC1	TL072	Dual op-amp, DIP8	
IC2	TL072	Dual op-amp, DIP8	
VOLUME	B100K	16mm right-angle PCB mount pot	
TONE	B100K	16mm right-angle PCB mount pot	
SUSTAIN	B100K	16mm right-angle PCB mount pot	
FILTER	ON/ON/ON	Toggle switch, DPDT (ON/ON/ON)	3-position, Type 2

