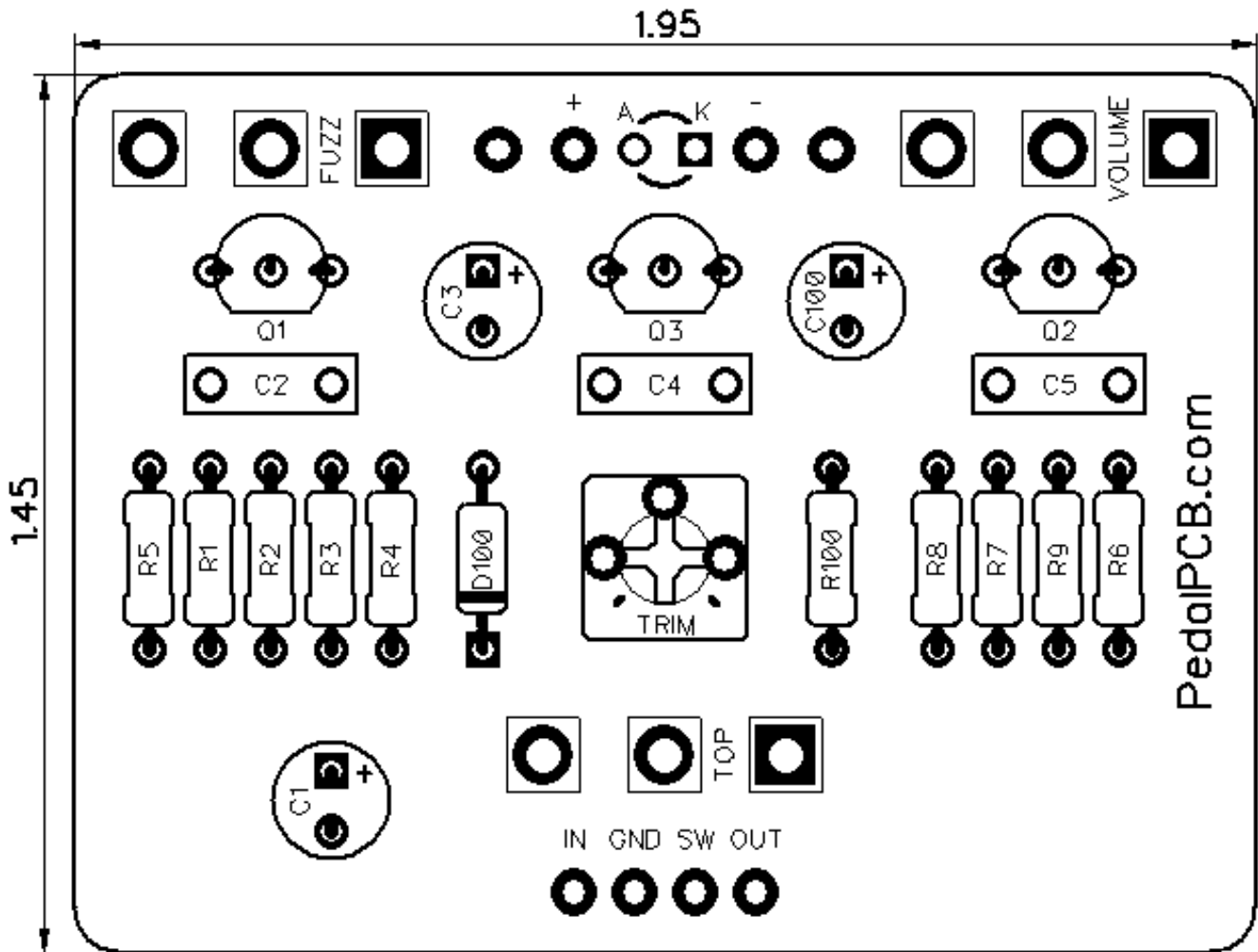


PedalPCB

Carbon Black Fuzz

Revised 8/20/20

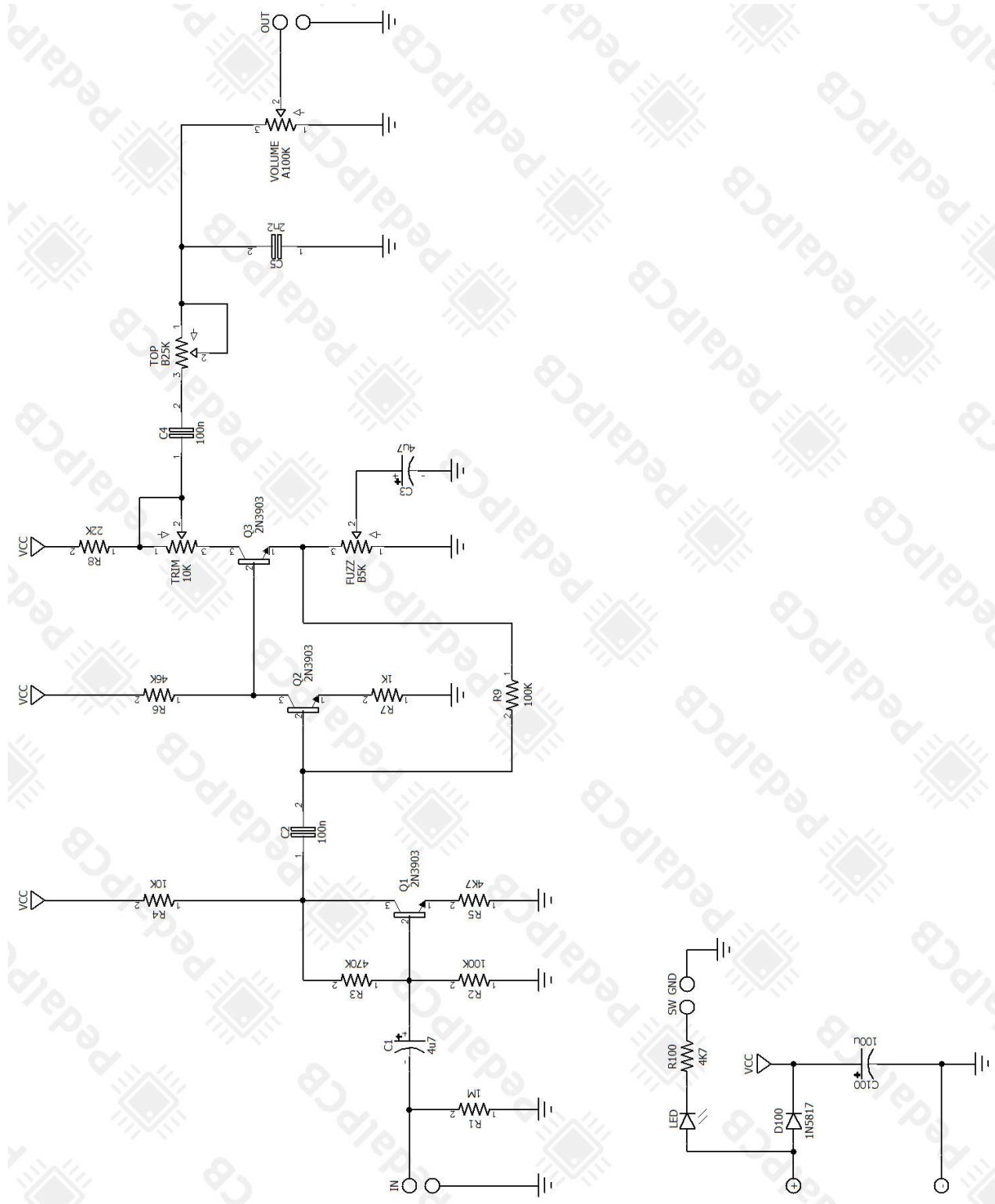


CONTROLS AND FEATURES

- Volume
- Fuzz
- Top

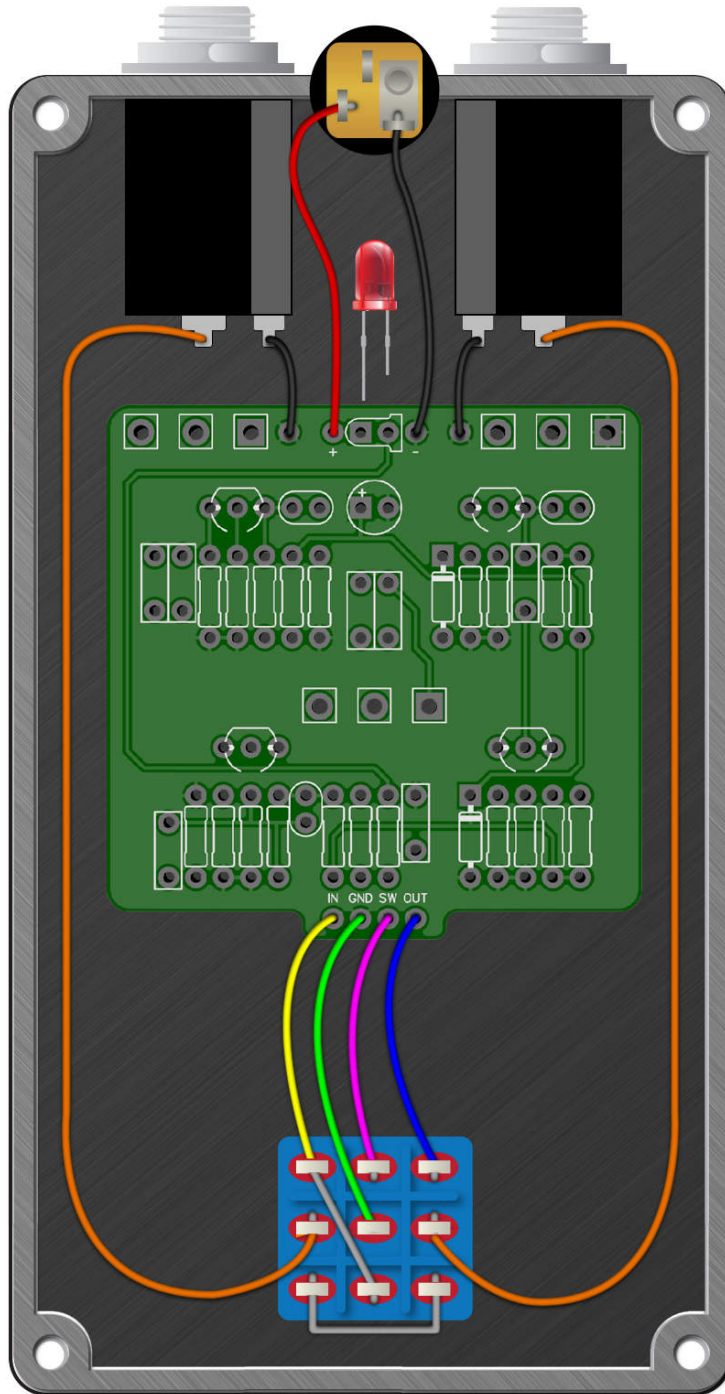
All trademarks and registered trademarks are the property of their respective owners. The company, product, and service names used in this web site are for identification purposes only. Use of these names, logos, and brands does not imply endorsement.

LOCATION	VALUE	TYPE	NOTES
R1	1M	Resistor, 1/4W	
R2	100K	Resistor, 1/4W	
R3	470K	Resistor, 1/4W	
R4	10K	Resistor, 1/4W	
R5	4K7	Resistor, 1/4W	
R6	46K	Resistor, 1/4W	
R7	1K	Resistor, 1/4W	
R8	22K	Resistor, 1/4W	
R9	100K	Resistor, 1/4W	
R100	4K7	Resistor, 1/4W	
C1	4u7	Electrolytic capacitor, 5mm	
C2	100n	Film capacitor, 7.2 x 2.5mm	
C3	4u7	Electrolytic capacitor, 5mm	
C4	100n	Film capacitor, 7.2 x 2.5mm	
C5	2n2	Film capacitor, 7.2 x 2.5mm	
C100	100u	Electrolytic capacitor, 5mm	
D100	1N5817	Schottky diode, DO-41	
Q1	2N3903	BJT transistor, NPN TO-18	
Q2	2N3903	BJT transistor, NPN TO-18	
Q3	2N3903	BJT transistor, NPN TO-18	
VOLUME	A100K	16mm right-angle PCB mount pot	
FUZZ	B5K	16mm right-angle PCB mount pot	
TOP	B25K	16mm right-angle PCB mount pot	
TRIM	10K	Trim potentiometer, 3362P style	



Carbon Black Fuzz

Wiring Diagram



Carbon Black Fuzz

Drill Template
125B enclosure

