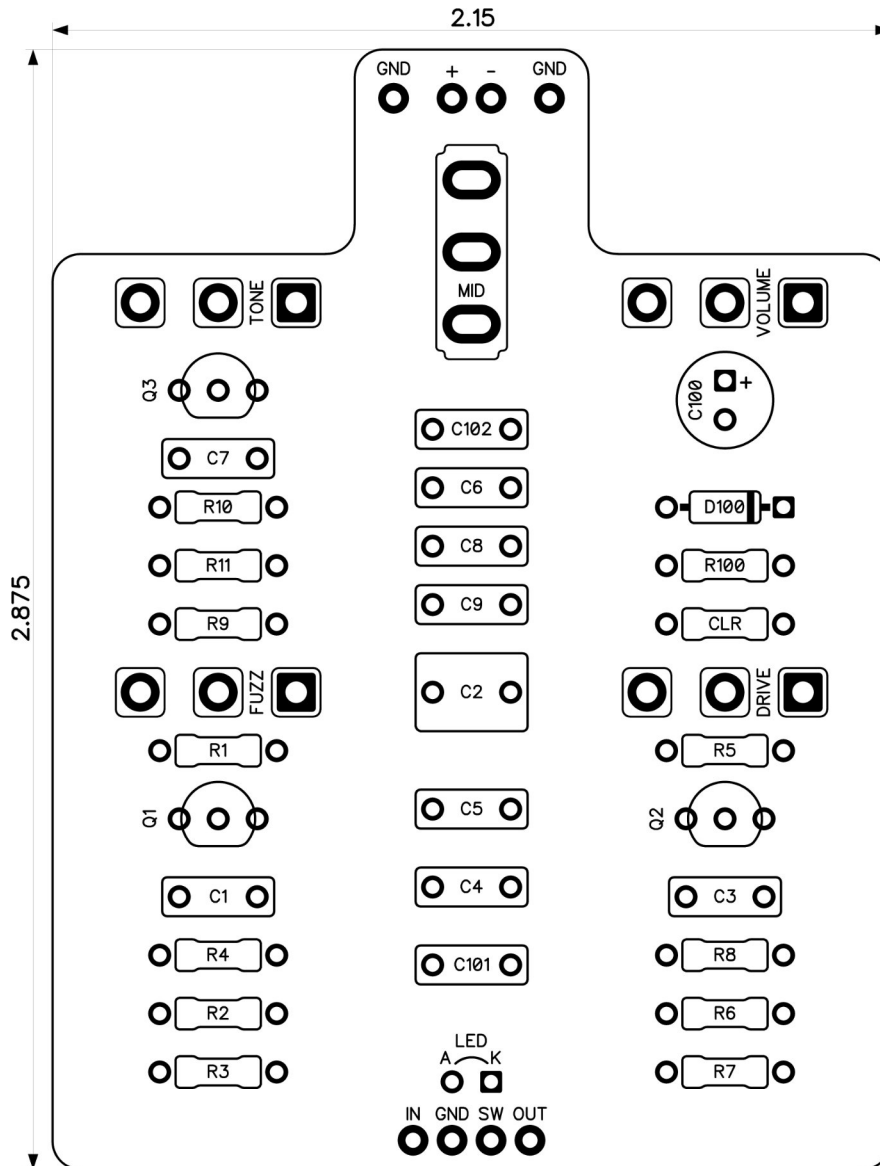


PedalPCB

Cadmium Fuzz

Revised 7/23/24



CONTROLS AND FEATURES

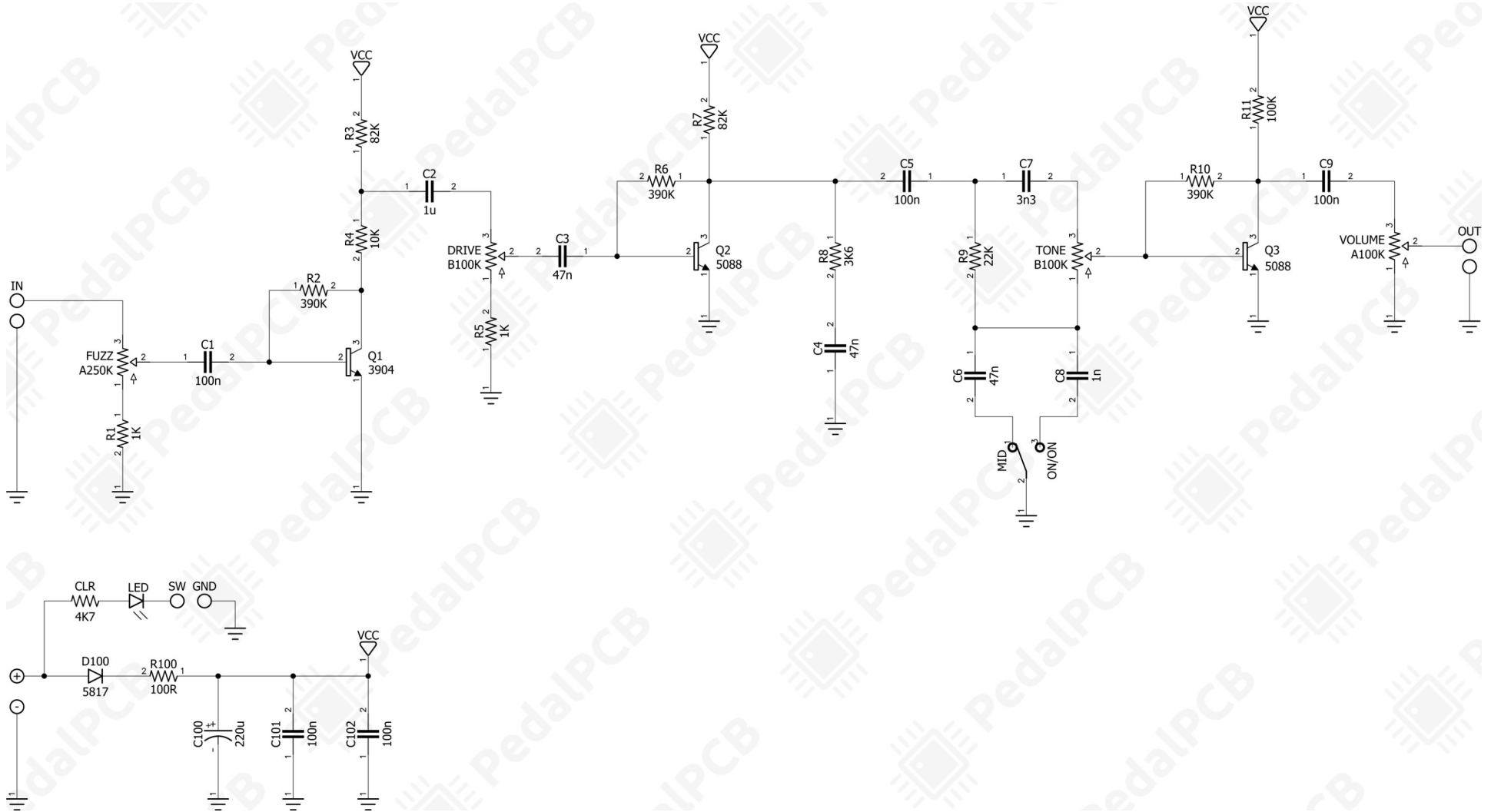
- Volume
- Tone
- Drive
- Fuzz
- Mid (Toggle switch)

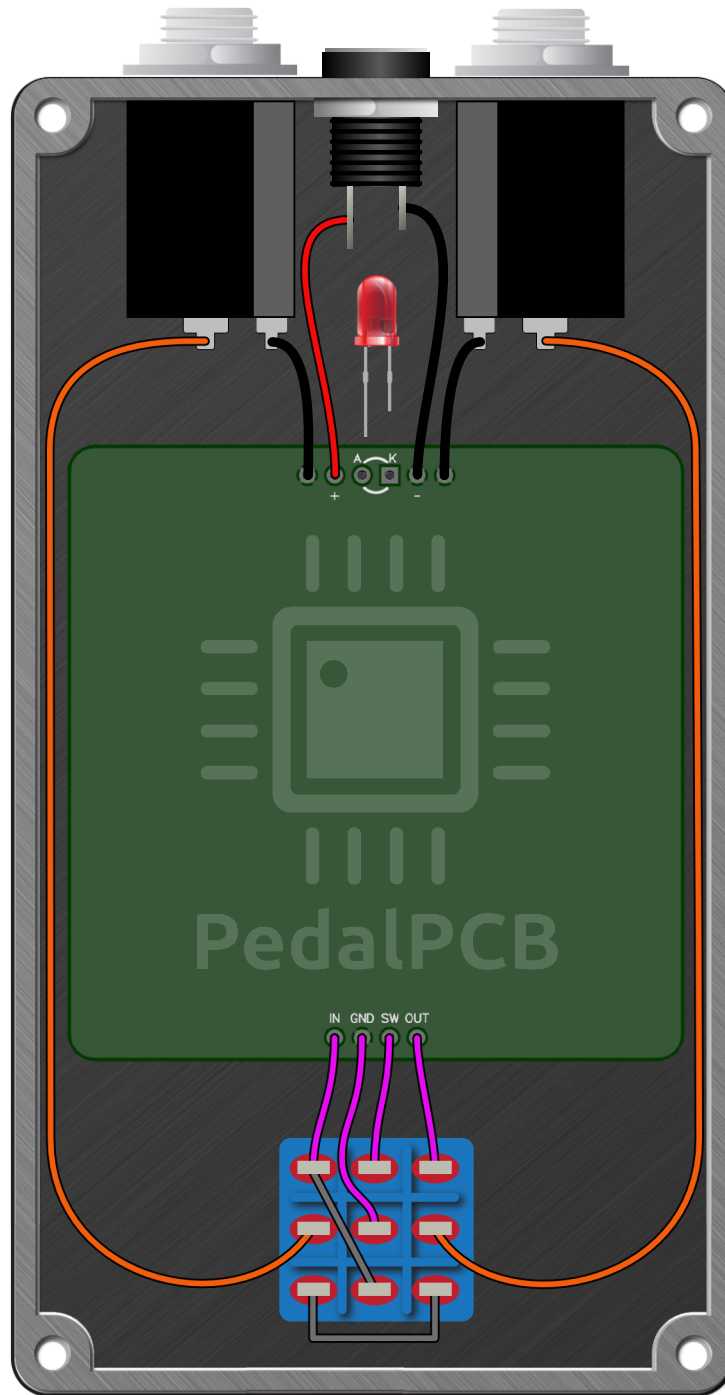
All trademarks and registered trademarks are the property of their respective owners. The company, product, and service names used in this web site are for identification purposes only. Use of these names, logos, and brands does not imply endorsement.

LOCATION	VALUE	TYPE	NOTES
R1	1K	Resistor, 1/4W	
R2	390K	Resistor, 1/4W	
R3	82K	Resistor, 1/4W	
R4	10K	Resistor, 1/4W	
R5	1K	Resistor, 1/4W	
R6	390K	Resistor, 1/4W	
R7	82K	Resistor, 1/4W	
R8	3K6	Resistor, 1/4W	
R9	22K	Resistor, 1/4W	
R10	390K	Resistor, 1/4W	
R11	100K	Resistor, 1/4W	
R100	100R	Resistor, 1/4W	
CLR	4K7	Resistor, 1/4W	* LED current limiting resistor
C1	100n	Film capacitor, 7.2 x 2.5mm	
C2	1u	Film capacitor, 7.2 x 5.0mm	
C3	47n	Film capacitor, 7.2 x 2.5mm	
C4	47n	Film capacitor, 7.2 x 2.5mm	
C5	100n	Film capacitor, 7.2 x 2.5mm	
C6	47n	Film capacitor, 7.2 x 2.5mm	
C7	3n3	Film capacitor, 7.2 x 2.5mm	
C8	1n	Film capacitor, 7.2 x 2.5mm	
C9	100n	Film capacitor, 7.2 x 2.5mm	
C100	220u	Electrolytic capacitor, 5mm	
C101	100n	Film capacitor, 7.2 x 2.5mm	
C102	100n	Film capacitor, 7.2 x 2.5mm	
D100	1N5817	Schottky diode, DO-41	
Q1	2N3904	BJT transistor, NPN TO-92	
Q2	2N5088	BJT transistor, NPN TO-92	
Q3	2N5088	BJT transistor, NPN TO-92	
VOLUME	A100K	16mm right-angle PCB mount pot	
TONE	B100K	16mm right-angle PCB mount pot	
DRIVE	B100K	16mm right-angle PCB mount pot	
FUZZ	A250K	16mm right-angle PCB mount pot	
MID	ON/ON	Toggle switch, SPDT	2-position (ON/ON)

Cadmium Fuzz

Schematic Diagram





Cadmium Fuzz

Drill Template
125B Enclosure

