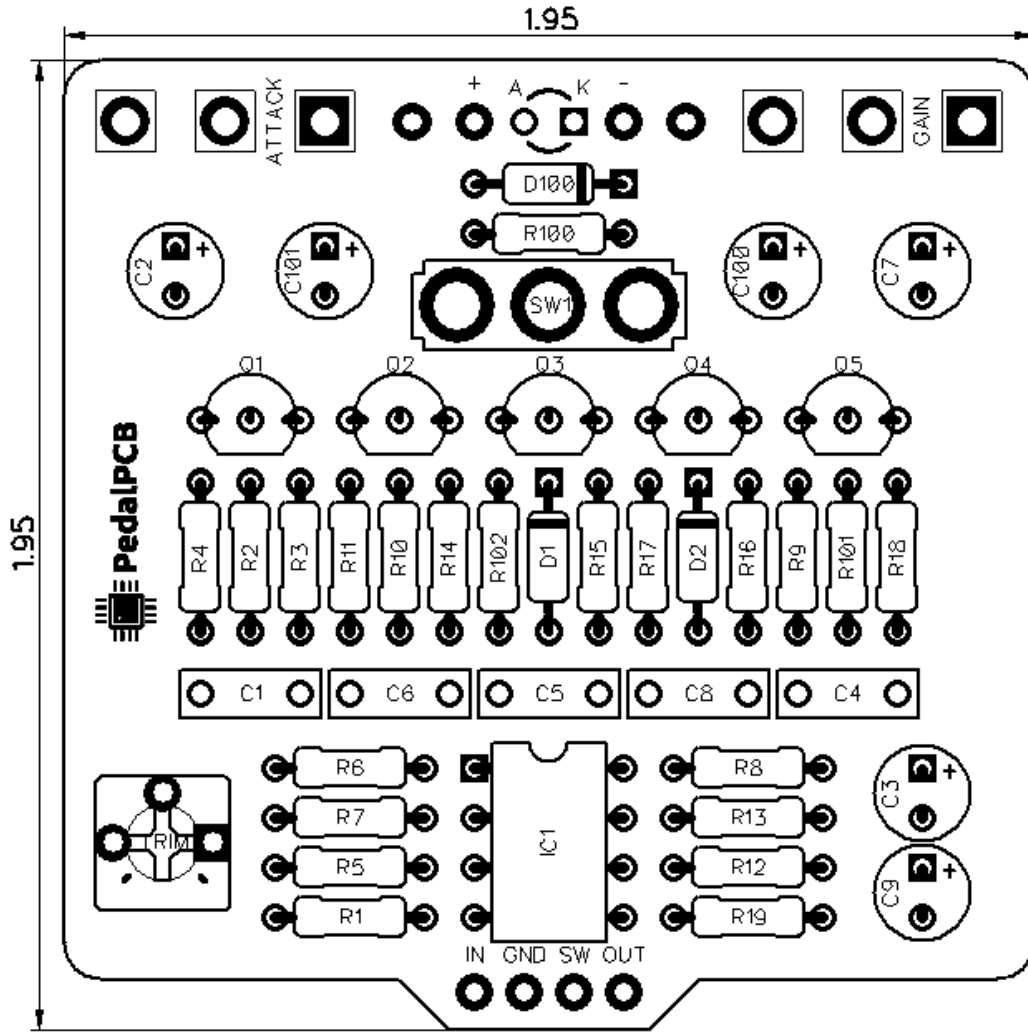




# PedalPCB

## Byrdhouse Compressor

Revision 09.01.19



### Controls

- Sustain
- Level
- Dark/Normal/Bright (Toggle switch)

All trademarks and registered trademarks are the property of their respective owners. The company, product, and service names used in this web site are for identification purposes only. Use of these names, logos, and brands does not imply endorsement.

**RESISTORS (1/4W)**

R1	1M
R2	10K
R3	1M
R4	10K
R5	1M
R6	1M
R7	1M
R8	10K
R9	10M
R10	8K2
R11	10M
R12	220K
R13	10K
R14	10K
R15	1M
R16	1M
R17	1M
R18	92K
R19	33K
R100	4K7
R101	68K
R102	33K

**CAPACITORS**

C1	10n
C2	2u2
C3	2u2
C4	22n
C5	470p
C6	10n
C7	2u2
C8	10n
C9	2u2
C100	22u
C101	2u2

**INTEGRATED CIRCUITS**

IC1	NTE996
-----	--------

**TRANSISTORS**

Q1	2N5088
Q2	2N5088
Q3	2N5088
Q4	2N5088
Q5	2N5088

**DIODES**

D1	1N4148
D2	1N4148
D100	1N5817

**POTENTIOMETERS**

ATTACK	B250K
GAIN	B250K

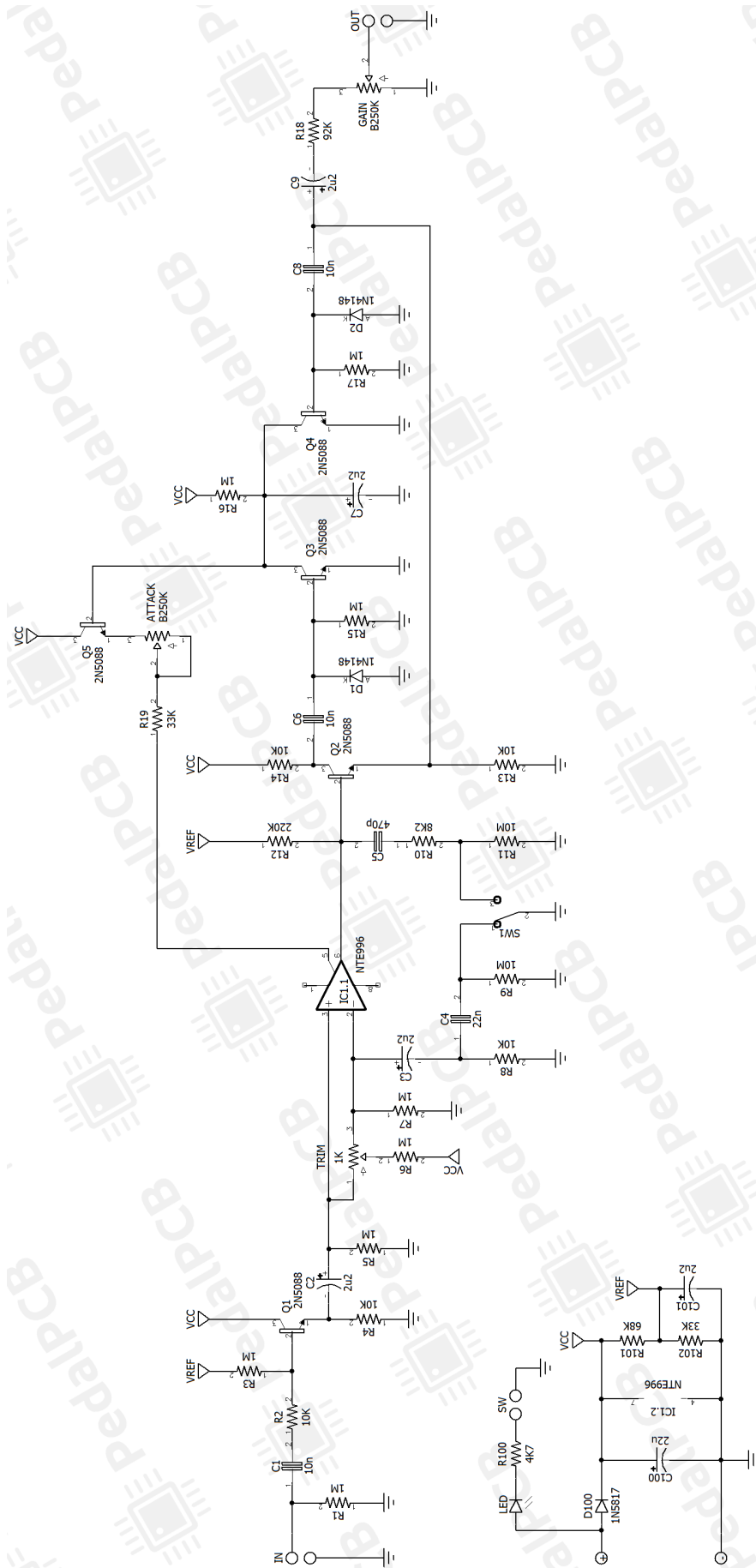
**TRIM POTS**

TRIM	1K
------	----

**SWITCHES**

SW1	SPDT (On/Off/On)
-----	------------------

# Byrdhouse Compressor



# Byrdhouse Compressor

Wiring Diagram



# Byrdhouse Compressor

Drill Template

125B enclosure with top mounted jacks

