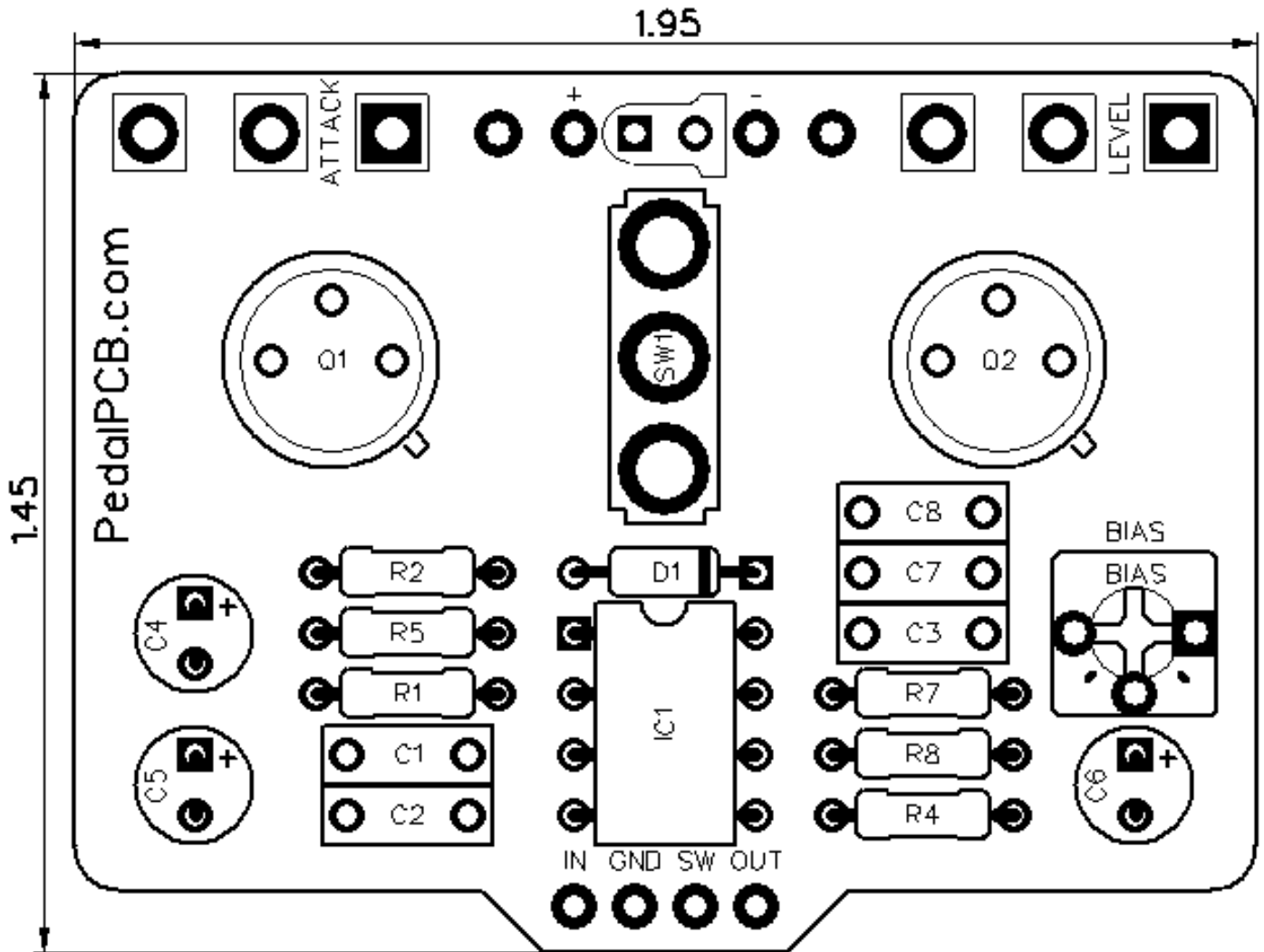




PedalPCB

Box '66

Revision 11.13.18



Controls

- **Boost** - Controls the amount of signal gain
- **Range** - Adjusts the range of frequencies boosted
- **Bias (Trim)** - Sets the transistor bias current
- **Mode (Toggle Switch)** - Selects '66 or Super-Bee mode

All trademarks and registered trademarks are the property of their respective owners. The company, product, and service names used in this web site are for identification purposes only. Use of these names, logos, and brands does not imply endorsement.

RESISTORS

R1 1M
R2 47K
R4 1K
R5 820R
R7 4K7
R8 10K

CAPACITORS

C1 220n
C2 470p
C3 4n7
C4 22u
C5 10u
C6 47u
C7 10n
C8 47p

TRANSISTORS

Q1 AC125 or OC71
Q2 OC76

INTEGRATED CIRCUITS

IC1 TC1044SCPA

DIODES

D1 1N5817

POTENTIOMETERS

ATTACK B1K
LEVEL B500K

TRIM POTS (3362P)

BIAS 25K

SWITCHES

SW1 SPDT Toggle

PedalPCB Box '66

