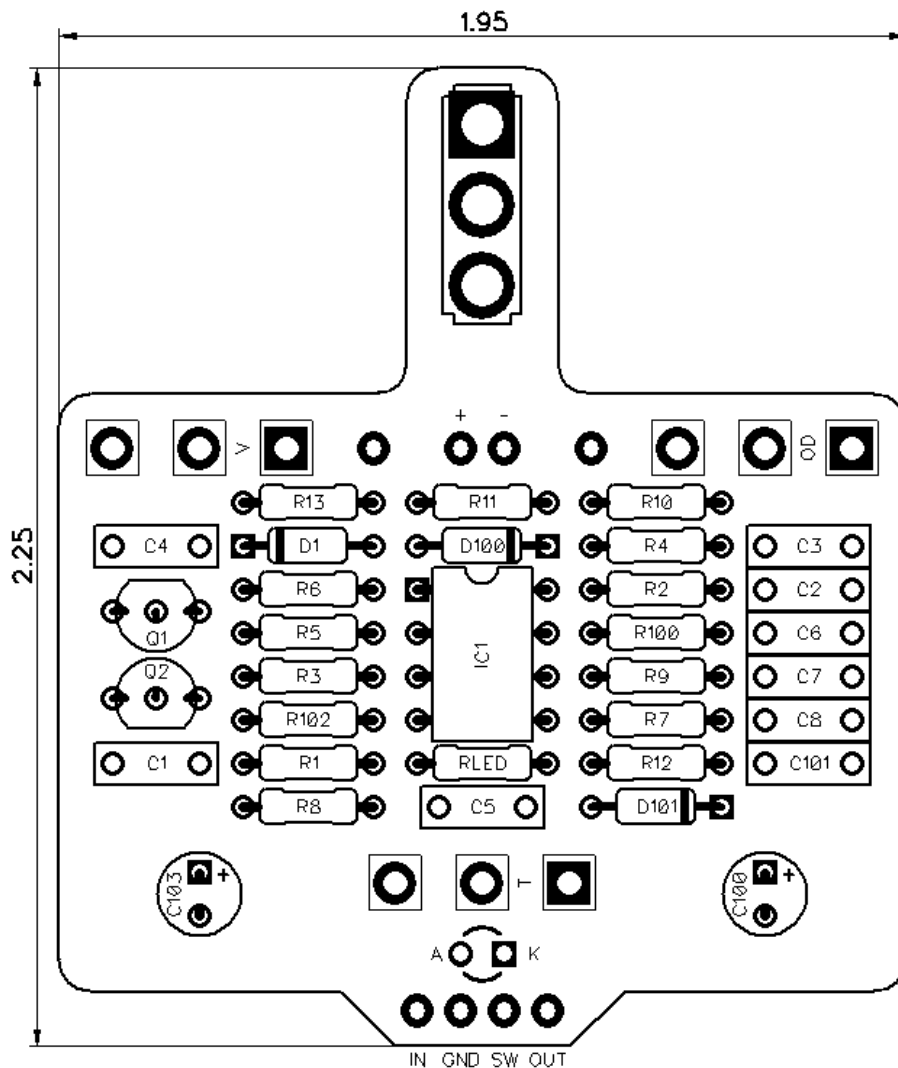




PedalPCB

Blue Waffle Drive

Revision 09.01.19



Controls

- Volume (V)
- Overdrive (OD)
- Tone (T)
- Rock / Blues (Toggle switch)

All trademarks and registered trademarks are the property of their respective owners. The company, product, and service names used in this web site are for identification purposes only. Use of these names, logos, and brands does not imply endorsement.

Blue Waffle Drive

Parts List

RESISTORS (1/4W)

R1 1M
R2 2K2
R3 470K
R4 330K
R5 18K
R6 10K
R7 10K
R8 39K
R9 150K
R10 33K
R11 22K
R12 1K5
R13 1K5
R100 10K
R102 10K
RLED 4K7

CAPACITORS

C1 22n
C2 68n
C3 220p
C4 1n
C5 100n
C6 220p
C7 100n
C8 100n
C100 100u
C101 100n
C103 10u

INTEGRATED CIRCUITS

IC1 TL082

TRANSISTORS

Q1 2N7000
Q2 2N7000

DIODES

D1 1N34A
D100 1N5817
D101 1N5817

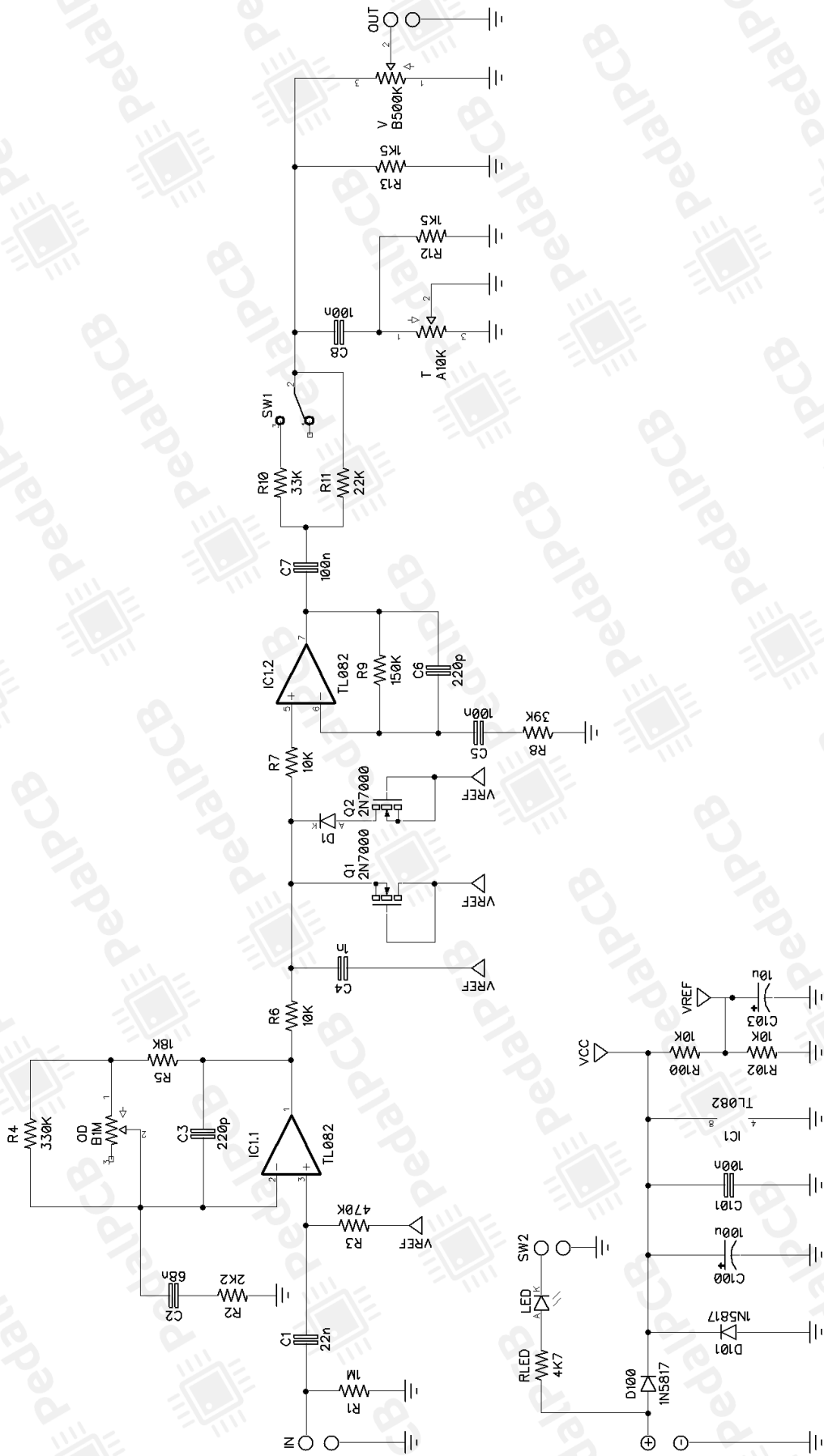
POTENTIOMETERS

V B500K
T A10K
OD B1M

TOGGLE SWITCHES

SW1 SPDT (On/On)

Blue Waffle Drive



Blue Waffle Drive

Wiring Diagram



Blue Waffle Drive

Drill Template
125B enclosure with top mounted jacks

