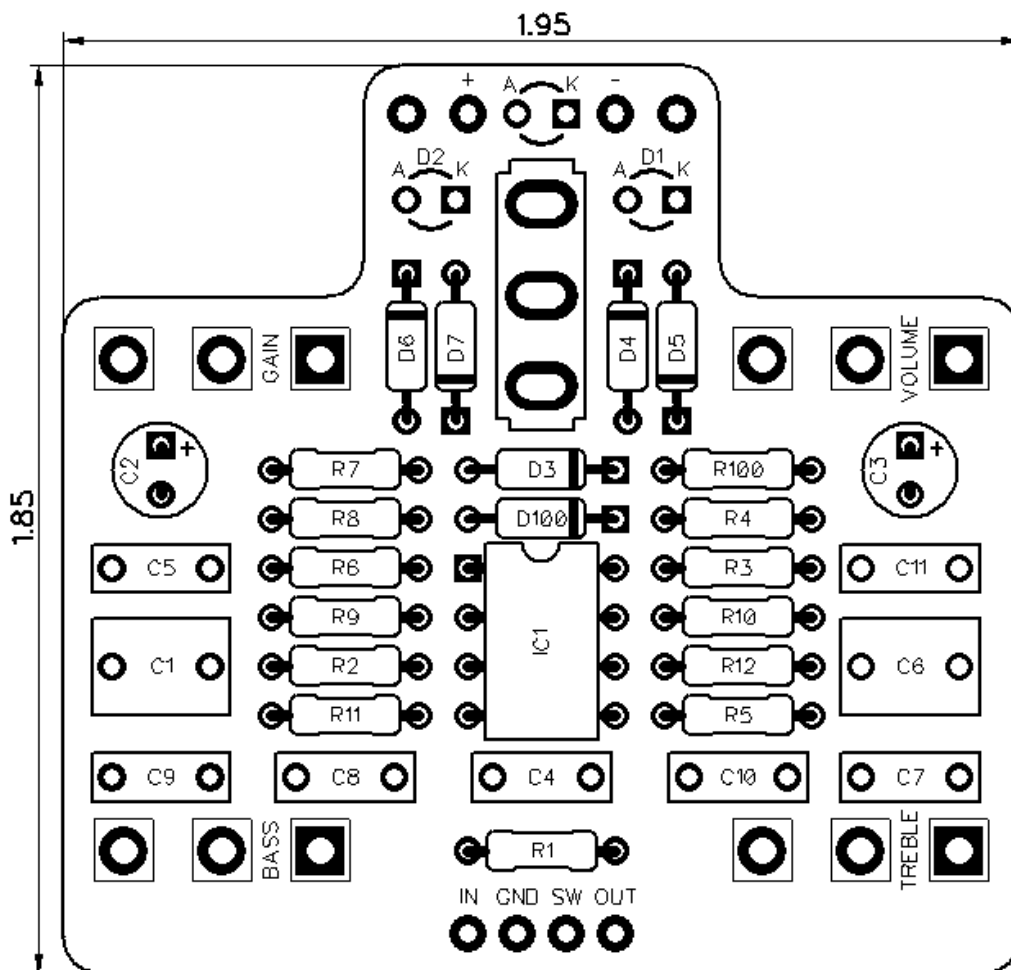




# PedalPCB

## Bastion Overdrive

Revision 05.14.20



### Controls

- Volume
- Gain
- Bass
- Treble
- Clipping Mode (Toggle Switch)

All trademarks and registered trademarks are the property of their respective owners. The company, product, and service names used in this web site are for identification purposes only. Use of these names, logos, and brands does not imply endorsement.

# Bastion Overdrive

## Parts List

### RESISTORS (1/4W)

R1	2M2
R2	510K
R3	8K2
R4	10K
R5	1K
R6	8K2
R7	1K
R8	8K2
R9	4K7
R10	4K7
R11	33K
R12	10K
R100	4K7

### CAPACITORS

C1	470n
C2	47u
C3	100u
C4	100n
C5	100p
C6	1u
C7	4n7
C8	33n
C9	33n
C10	4n7
C11	100n

### INTEGRATED CIRCUITS

IC1	JRC4559D
-----	----------

### DIODES

D1	3mm Red LED
D2	3mm Red LED
D3	1N4148
D4	1N4148
D5	1N4148
D6	1N4148
D7	1N4148
D100	1N5817

### POTENTIOMETERS

VOLUME	B100K
GAIN	A500K
TREBLE	B50K
BASS	B50K

### SWITCHES

SW1	SPDT ON/ON
-----	------------

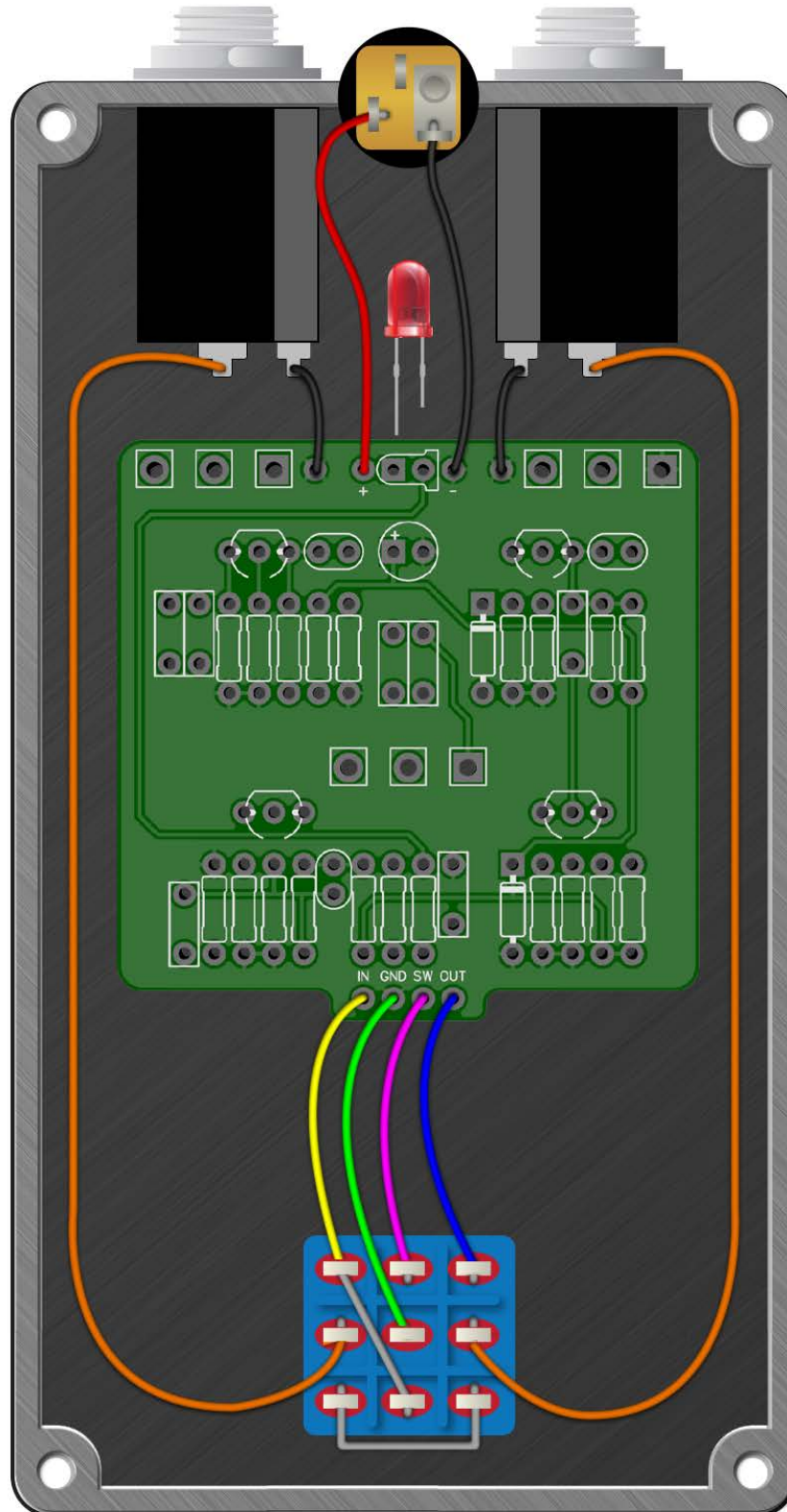


## **Bastion Overdrive**

# Schematic Coming Soon

# Bastion Overdrive

Wiring Diagram



# Bastion Overdrive

Drill Template  
125B Enclosure

