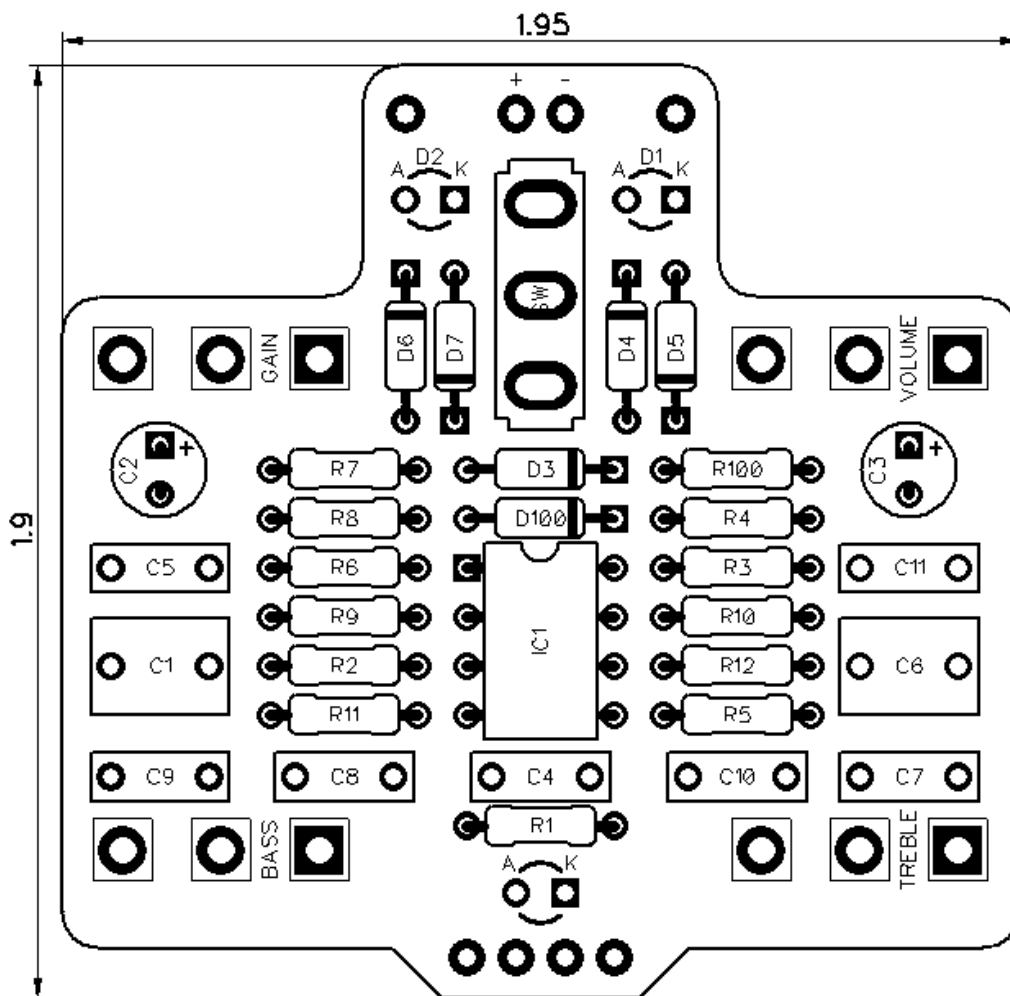




# PedalPCB

## Bastion Overdrive

Revision 08.13.20



### Controls

- Volume
- Gain
- Bass
- Treble
- Clipping Mode (Toggle Switch)

All trademarks and registered trademarks are the property of their respective owners. The company, product, and service names used in this web site are for identification purposes only. Use of these names, logos, and brands does not imply endorsement.

# Bastion Overdrive

## Parts List

**RESISTORS (1/4W)**

R1 2M2  
R2 510K  
R3 8K2  
R4 10K  
R5 1K  
R6 8K2  
R7 1K  
R8 8K2  
R9 4K7  
R10 4K7  
R11 33K  
R12 10K  
R100 4K7

**CAPACITORS**

C1 470n  
C2 47u  
C3 100u  
C4 100n  
C5 100p  
C6 1u  
C7 4n7  
C8 33n  
C9 33n  
C10 4n7  
C11 100n

**INTEGRATED CIRCUITS**

IC1 JRC4559D

**DIODES**

D1 3mm Red LED  
D2 3mm Red LED  
D3 1N4148  
D4 1N4148  
D5 1N4148  
D6 1N4148  
D7 1N4148  
D100 1N5817

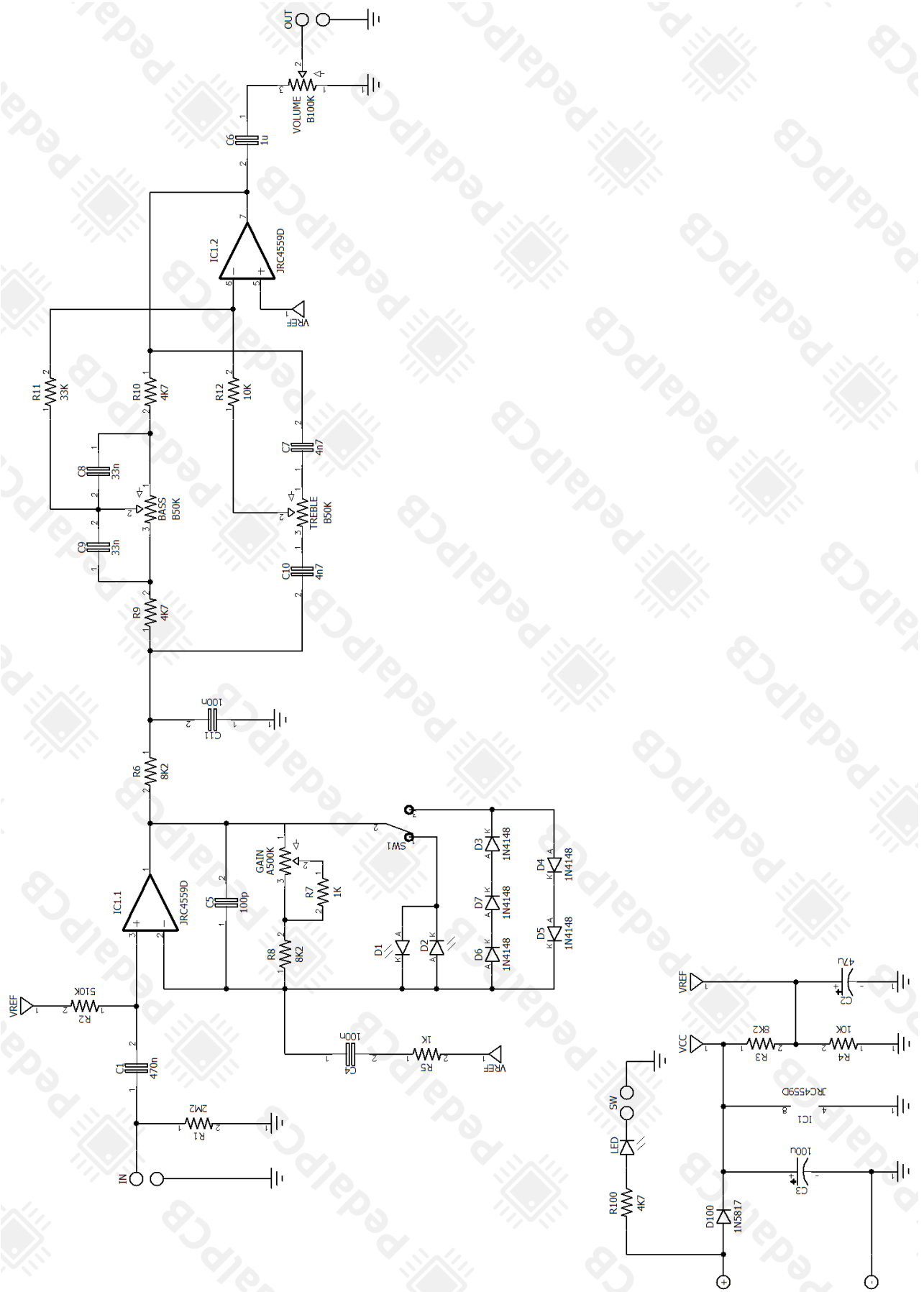
**POTENTIOMETERS**

VOLUME B100K  
GAIN A500K  
TREBLE B50K  
BASS B50K

**SWITCHES**

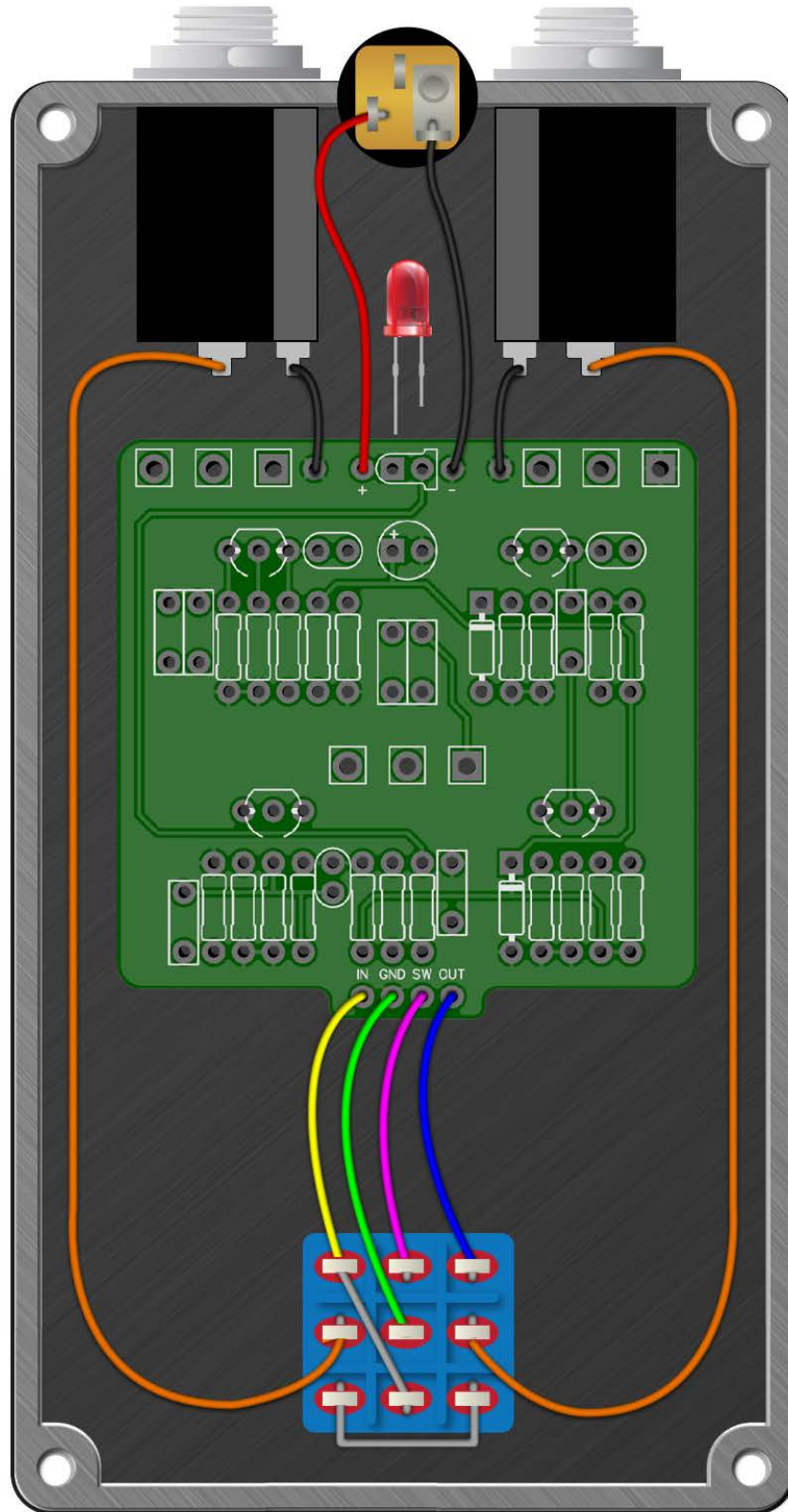
SW1 SPDT ON/ON

# Bastion Overdrive



# Bastion Overdrive

Wiring Diagram



# Bastion Overdrive

Drill Template  
125B Enclosure

